

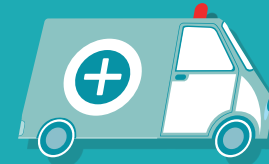


Nearly **1 in 10** Georgia children has asthma. Black children are twice as likely as white children to have asthma.

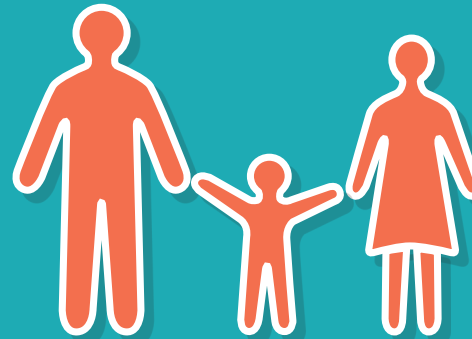


Children 0-9 years old make up 14% of Georgia's population, but account for

36% of asthma ER visits.



Asthma emergency care is costly. In 2011 asthma ER visits for children cost **\$27.8 million**. Asthma costs are preventable if asthma is controlled.



Parents, day-care centers and schools can reduce asthma attacks by creating asthma-friendly environments free of common triggers.

ASTHMA CAN BE CONTROLLED



Asthma Action Plan

Make sure your patient has a written asthma action plan.



Controller

Make sure your patients take their controller medications.



Self-Management

Refer your patients to an asthma educator.



Avoid Triggers

Help patients avoid common triggers, like cigarette smoke, dust and mold.

Always follow the EPR-3 guidelines when treating patients with asthma. For more information about asthma please visit dph.georgia.gov/Asthma