

# Georgia Weekly Influenza Report

MMWR Week 04

Updated 2/6/2015

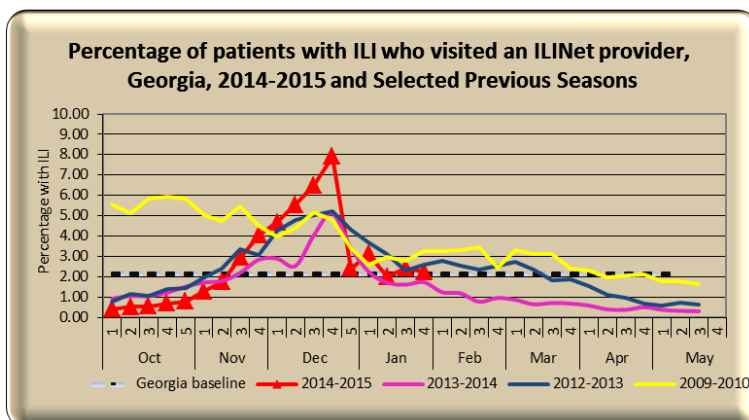
## Week 04 (Jan. 25 - Jan. 31, 2015) Synopsis

During week 04 there was regional influenza activity in Georgia with low occurrences of sustained flu transmission.

- **Outpatient Illness Surveillance (ILINet):** The proportion of outpatient visits for ILI was 2.25%, which is above the Georgia baseline of 2.1%.
- **Geographic Spread of Influenza:** The geographic spread of influenza in Georgia was **REGIONAL** during week 04.
- **Metro Area Hospitalizations:** There were **10 hospitalizations** due to influenza infection during week 04. There have been **1,037** hospitalizations due to influenza infection so far this season.
- **Influenza Related Deaths:** There were **0** confirmed influenza-associated deaths during week 04. There have been **23** confirmed influenza-associated deaths as of 2/6/2015.
- **Viral Surveillance:** Of the **1,085** Specimens tested and reported by the Georgia Public Health Laboratory (GPHL) and the National Respiratory and Enteric Virus Surveillance System (NREVSS) collaborating laboratories during week 04, **114 (10.51%)** were positive for influenza.
- **Reported Influenza Outbreaks:** There were **0** influenza-associated outbreaks during week 04. There have been **30** influenza-related outbreaks so far this season.
- **RSV Viral Surveillance:** Of the **442** specimens tested and reported by the Georgia Public Health Laboratory (GPHL) and the National Respiratory and Enteric Virus Surveillance System (NREVSS) collaborating laboratories during week 04, the percent positive of **ALL** laboratory confirmed tests was **14.93%**.

## ILINet Provider Network Data

**Percentage of patients with ILI reported by ILINet providers**  
(Volunteer providers who report percentage of patients with ILI seen by their practice or facility weekly. This week there are currently **27** ILINet providers reporting in Georgia.)



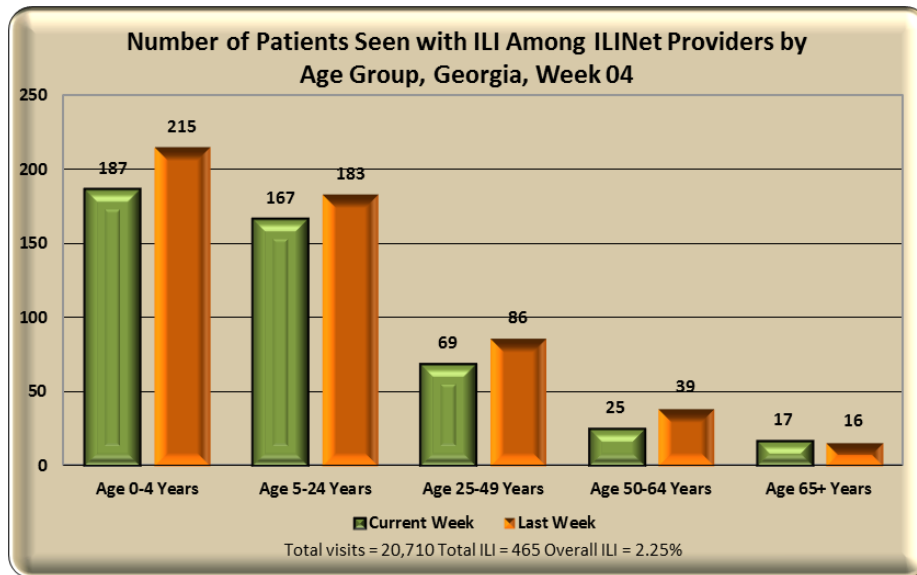
This Week: **2.25%** of patients seen in ILINet Provider offices were diagnosed with ILI.

Note: The Georgia baseline is formulated by averaging ILI percentage during weeks of endemic activity determined by laboratory results for influenza.

**GEORGIA  
DEPARTMENT OF  
PUBLIC HEALTH**

**ILINet patient visits by  
age group**

This graph displays the number of patients seen at sentinel provider offices and diagnosed with ILI in the past week. The data are stratified by age-group.

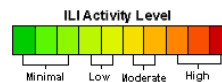


During **week 04** those aged 0 to 24 years were most often seen with ILI symptoms by ILINet providers.

**ILI Activity Level Indicator - ILINet**

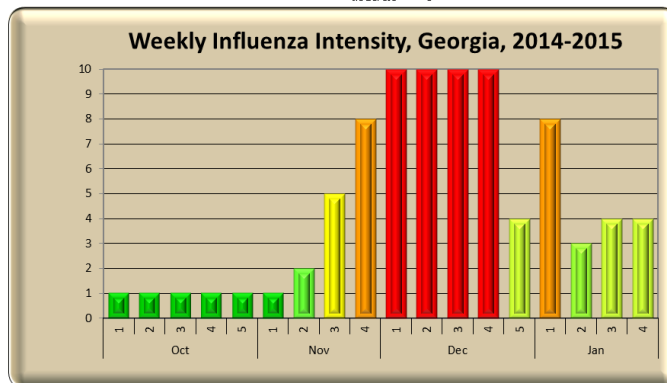
(This graph uses the proportion of outpatient visits for ILI to measure the ILI severity in Georgia.) For a national view, visit <http://cdc.gov/flu/weekly/>

**Georgia ILI Intensity Indicator**



ILI Activity Levels (1 - 10) correspond to the number of standard deviations away from the 3-year mean for the current week.

This week the intensity level is:  
**Low = 4**



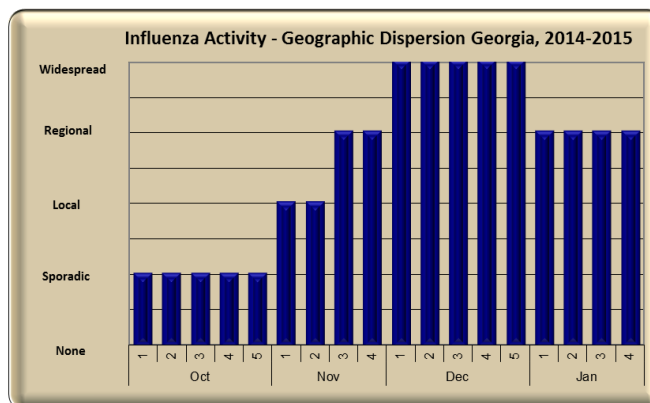
**Georgia ILI Geographic Dispersion**

This Week's Flu Code is:

**REGIONAL**

Regional = Outbreaks of influenza  
OR

Increases in ILI cases and recent laboratory-confirmed influenza cases in at least two but less than half the regions of the state with recent laboratory evidence of influenza in those regions



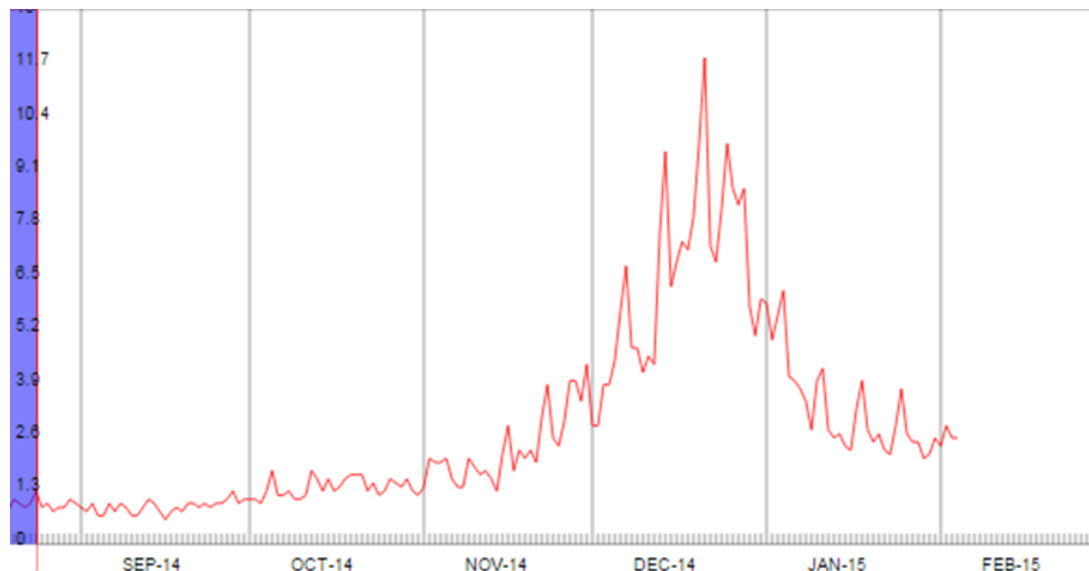
**Council of State and Territorial Epidemiologists Report – Geographic Dispersion**

(This graph reflects geographic dispersion and is not an indicator of influenza severity)

GEORGIA  
DEPARTMENT OF  
PUBLIC HEALTH

Syndromic Surveillance  
Data Daily Influenza-like  
Illness Syndrome  
(percentage of ILI visits)

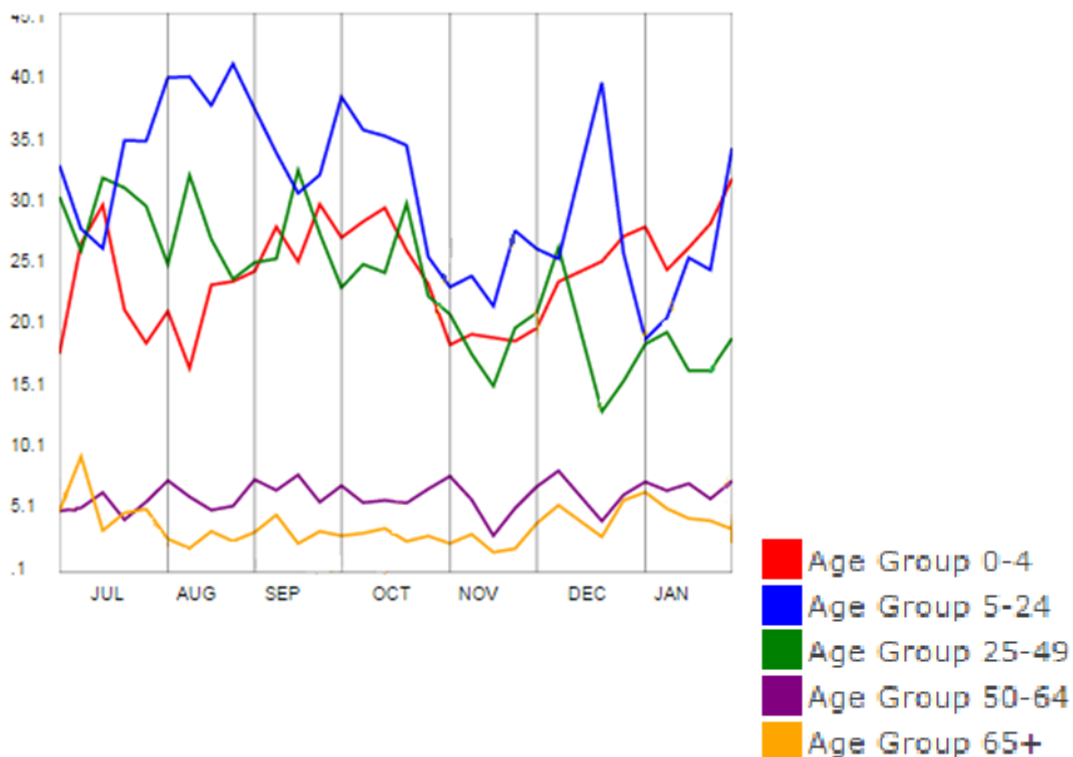
### Daily Percent of ILI Syndrome Visits to Georgia Emergency



During **week 04** the daily percentage of patients seen for ILI in Georgia Emergency Departments reporting to our syndromic surveillance system decreased.

Syndromic Surveillance  
Data Weekly Influenza-like  
Illness Syndrome  
(percentage of ILI visits by  
Age Group)

### Weekly Percent of ILI Syndrome Visits by Age Group



**GEORGIA  
DEPARTMENT OF  
PUBLIC HEALTH**

**Influenza Hospitalizations in the eight county metro Atlanta area 2014-2015** (Emerging Infections Program data)

**Influenza-Associated Deaths 2014-2015 Statewide** (Influenza-associated deaths are a notifiable condition in Georgia)

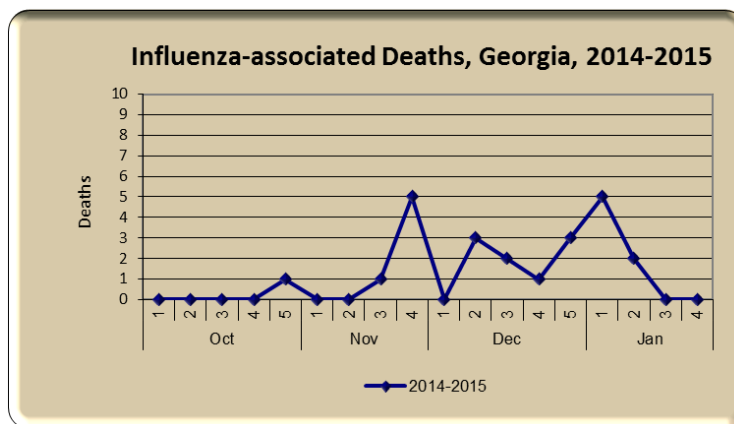
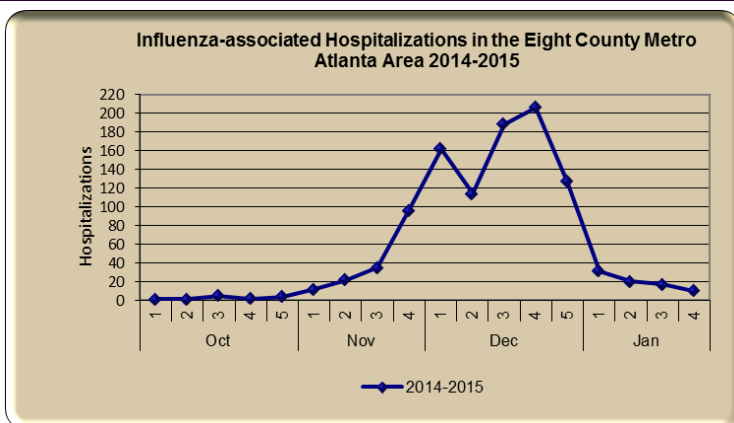
**Influenza-Associated hospitalizations in the eight-county metro Atlanta area** (Emerging Infections Program data)

**Influenza-Associated deaths reported to Public Health**

## Georgia Influenza-Associated Hospitalizations and Deaths

	<b>Number of Hospitalizations (8- County Metro-Area Only)</b>	<b>Hospitalization Rate (Cases/100,000 people)</b>
0 - 4	85 (8.2%)	<b>31.54</b>
5 -17	100 (9.6%)	<b>14.02</b>
18 - 49	189 (18.2%)	<b>10.40</b>
50 - 64	153 (14.8%)	<b>22.06</b>
65+	510 (49.2%)	<b>137.71</b>
Total	1,037 (For confirmation, these data are delayed)	<b>27.63</b>

<b>Age Group</b>	<b>Number of Deaths</b>
0 - 4	1
5 -17	0
18 - 49	2
50 - 64	2
65+	18
Total	23 (death data includes all confirmed influenza-associated deaths, 9/29/2014-1/30/2014)



# Georgia Virologic Surveillance Data

**GEORGIA  
DEPARTMENT OF  
PUBLIC HEALTH**

2 Peachtree St. N.W.  
Atlanta, GA 30303

Phone: 404-463-4625  
Fax: 404-657-7517

E-mail: [Audrey.Kunkes@dph.ga.gov](mailto:Audrey.Kunkes@dph.ga.gov)

**GA DPH on the web !**  
<http://dph.georgia.gov/>

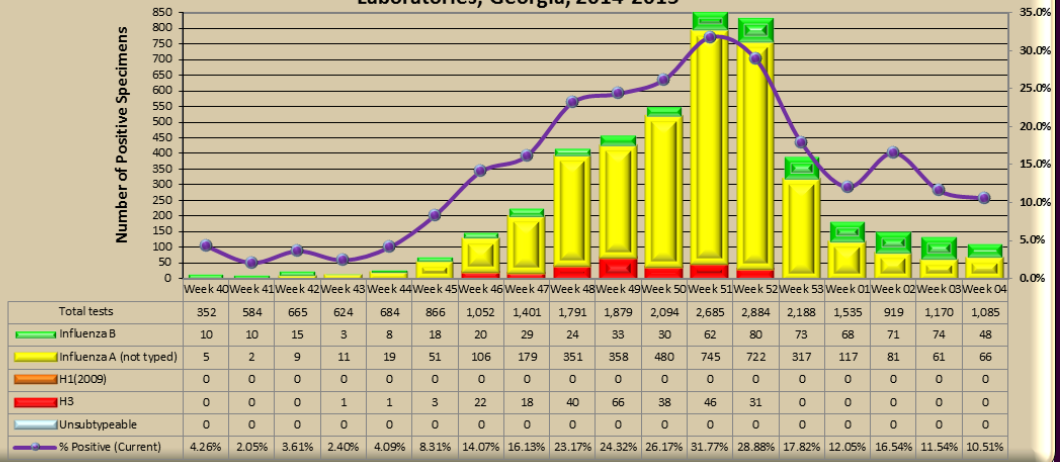
## Georgia threshold of RSV season onset and end

RSV season onset is defined as the first week of two (2) consecutive weeks when the percent positive of **ALL** lab confirmed tests are greater than or equal to 10%. The end of RSV season is now defined as the first week of two consecutive weeks when the percent positive of **ALL** lab confirmed tests are less than 10%.

**RSV Season Status: ON**

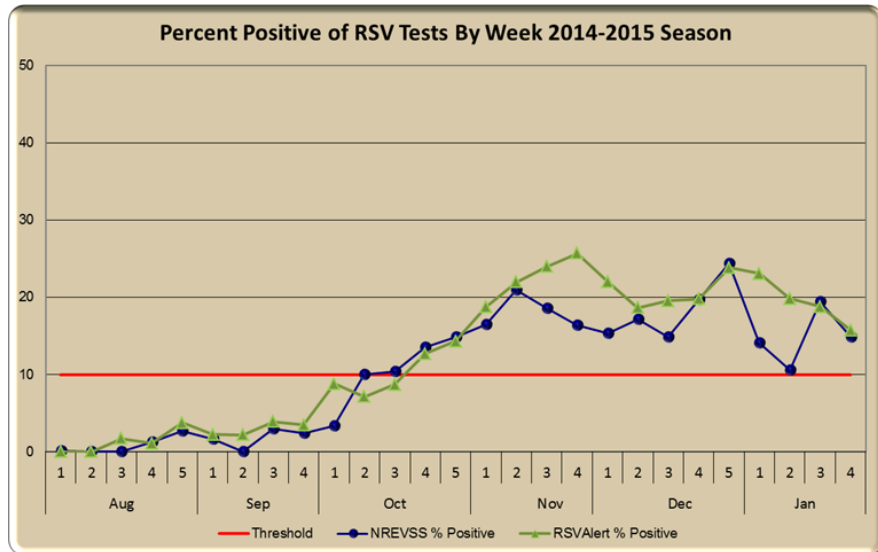


**Influenza Positive Tests Reported to Public Health by U.S. WHO/NREVSS Collaborating Laboratories, Georgia, 2014-2015**



**Note:** Includes rapid tests reported from reference Laboratories and the Georgia Public Health Laboratory; not all positive laboratory results for influenza are reported to Public Health.

## Respiratory Syncytial Virus (RSV) Surveillance Data



## Flu News

[Meta-analysis supports oseltamivir use in adults, notes side effects](#)

[Flu Scan: Steady US flu activity; Second H7N9 case in Canada](#)

[Early Estimates of Seasonal Influenza Vaccine Effectiveness - United States, January 2015](#)

[News Scan: Oseltamivir effectiveness; Obesity and flu morbidity](#)