

NEWS RELEASE

FOR IMMEDIATE RELEASE:

Nov. 24, 2020

CONTACT:

Nancy Nydam
404-657-2462

DPH Provides Update on COVID-19 in Georgia

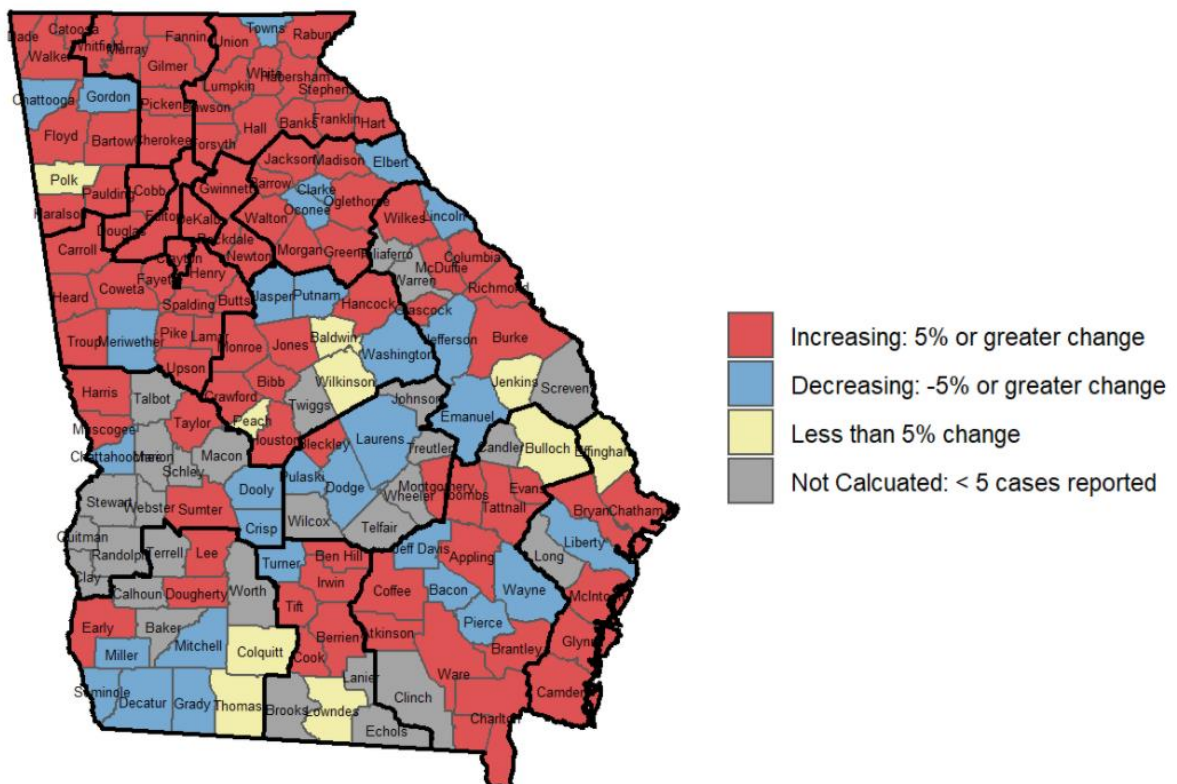
Atlanta – The Georgia Department of Public Health (DPH) is providing the following information regarding the fight against COVID-19 in Georgia.

COVID-19 Cases

- From 11/16 to 11/23, the seven-day average of new cases reported **increased 32.9%**.
- The seven-day average of new cases reported is **down 53%** from our peak July 24.
- As of Nov. 23 there are **406,220 PCR confirmed cases of COVID-19 and 44,836 antigen positive cases of COVID-19**.

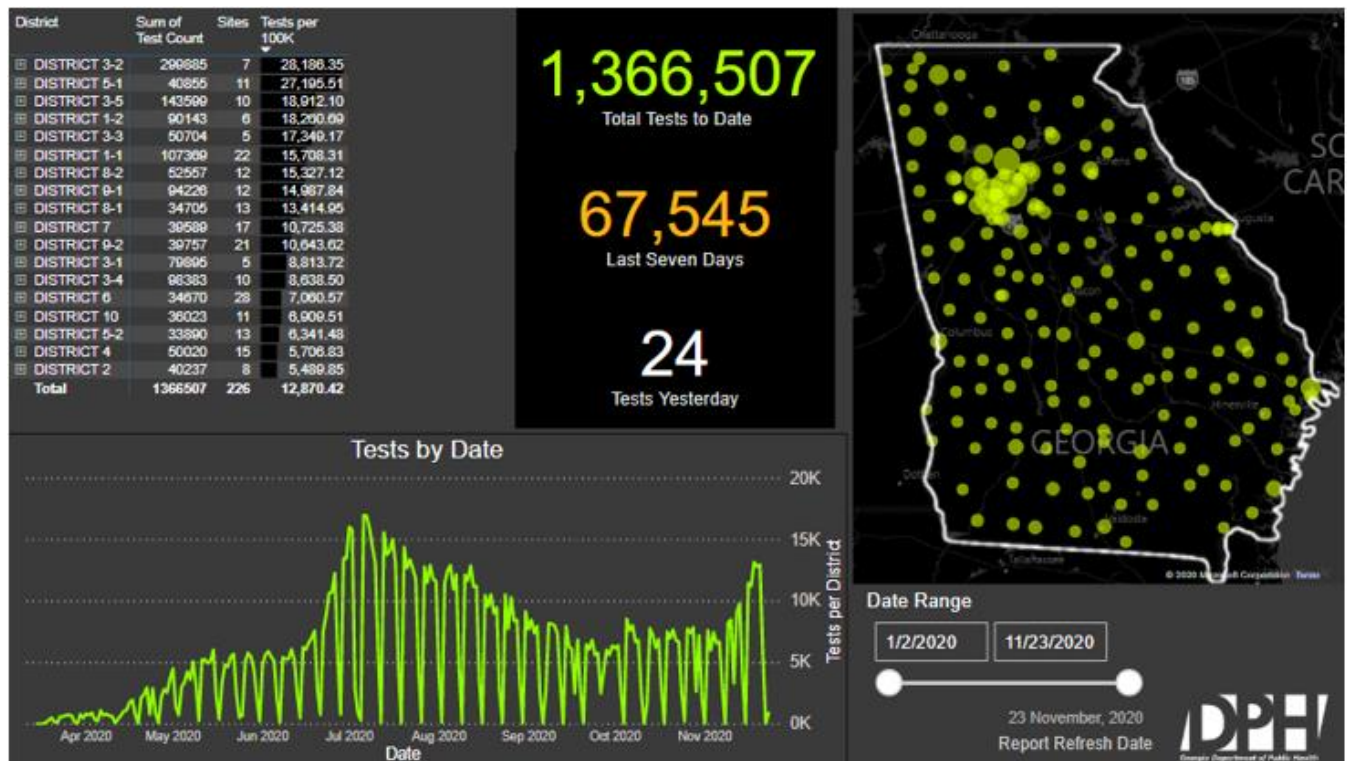
Confirmed COVID-19 Cases

Percent Change 11/07-11/13, 11/14-11/20



COVID-19 Testing

Georgia SPOCs



- As of Nov. 23, the state reported **4,139,509** (cumulative) COVID-19 PCR tests reported to DPH through Electronic Laboratory Reports (ELR).
- The number of specimens collected at DPH SPOCs is **1,366,507**.
- From Nov.17-23, testing at SPOC locations **increased 57%** over the previous seven days.

Positivity Rate

The statewide percent positivity (7-day moving average) for PCR test **decreased 6%** from 8.3% on 11/16 to 7.8% on Nov. 23.

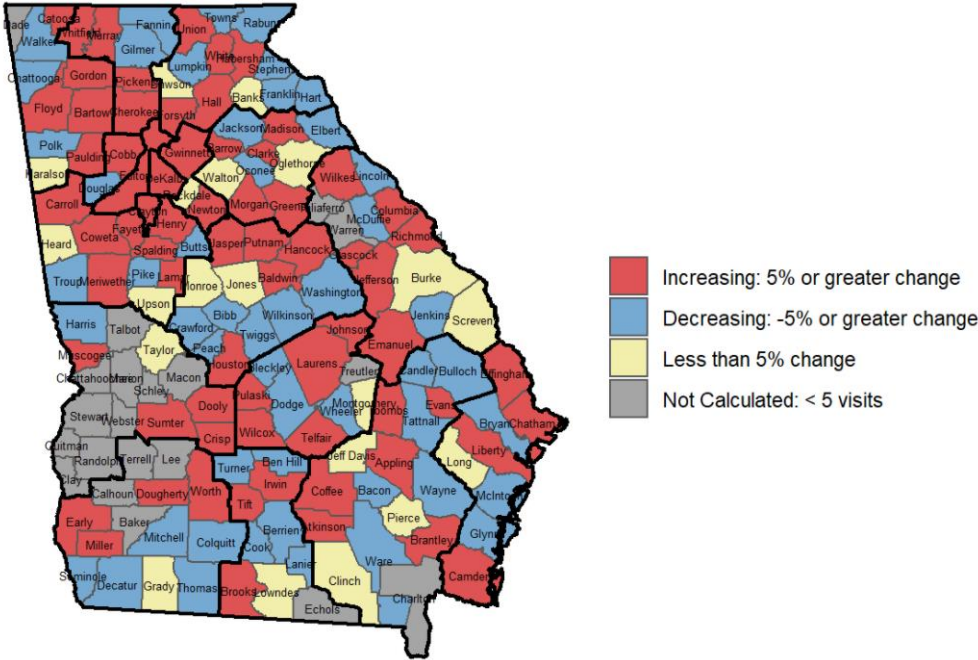
Hospitalizations

Daily hospitalizations for COVID-19 have **increased 12%** from 1,697 on Nov. 16 to 1,901 on Nov. 23. Hospitalizations have **decreased 40%** since a daily high of 3,200 on July 30.

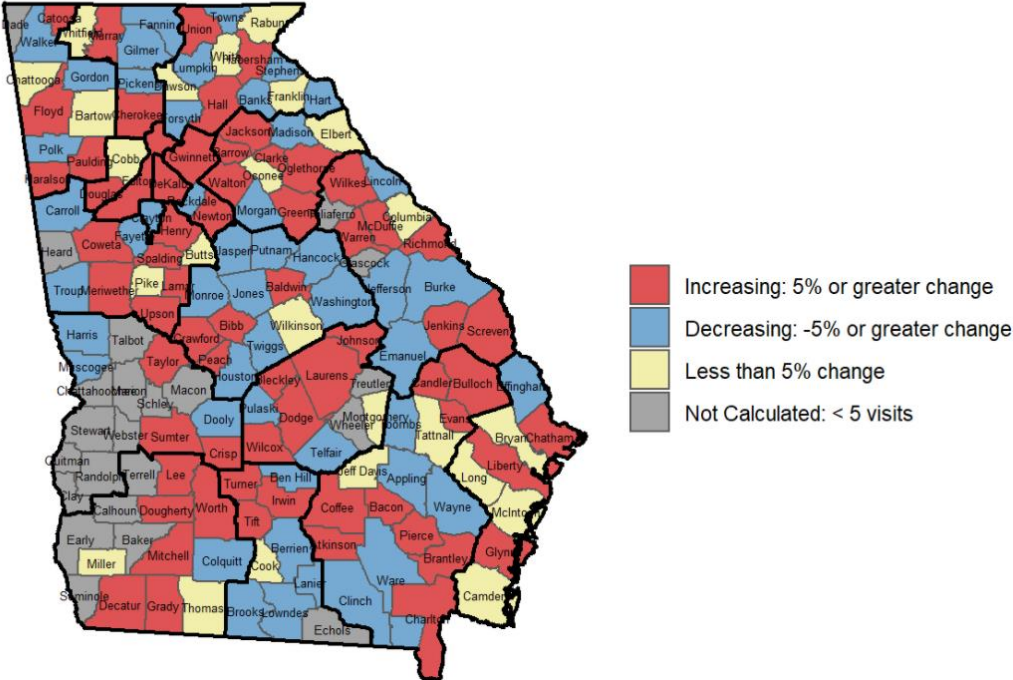
Emergency Department Visits

Emergency Department (ED) visits related to COVID-19 increased 1% statewide and ILI (influenza-like illness) visits have remained flat statewide over the two week period Nov. 7 - 20.

Emergency Department (ED) Visits with COVID-19 Syndrome Percent Change 11/07-11/13, 11/14-11/20

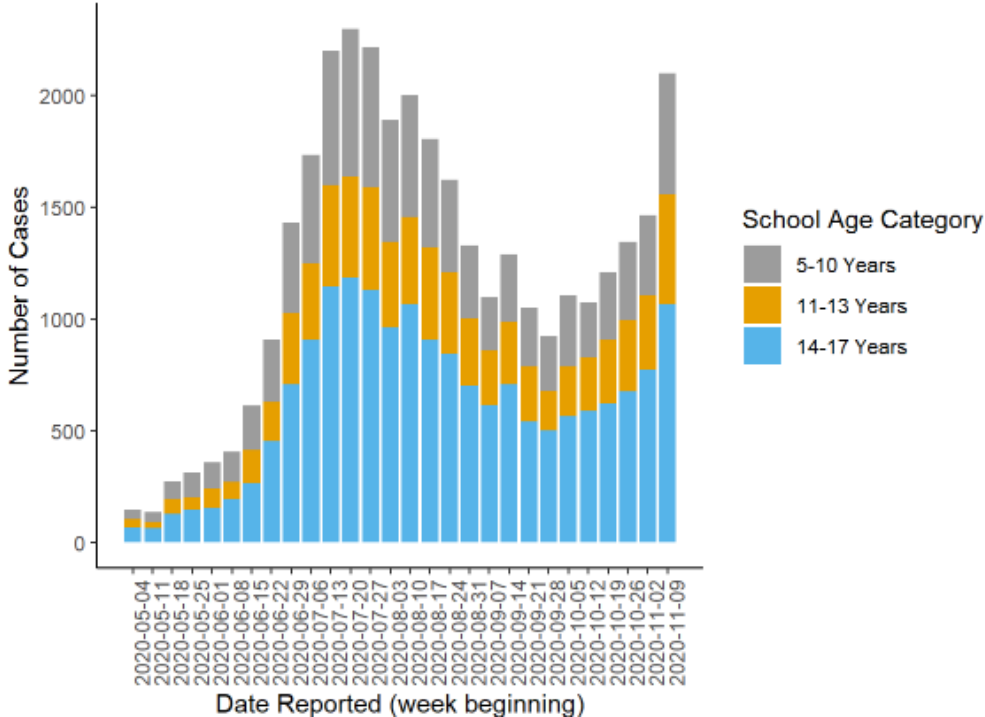


Emergency Department (ED) Visits with ILI Syndrome Percent Change 11/07-11/13, 11/14-11/20



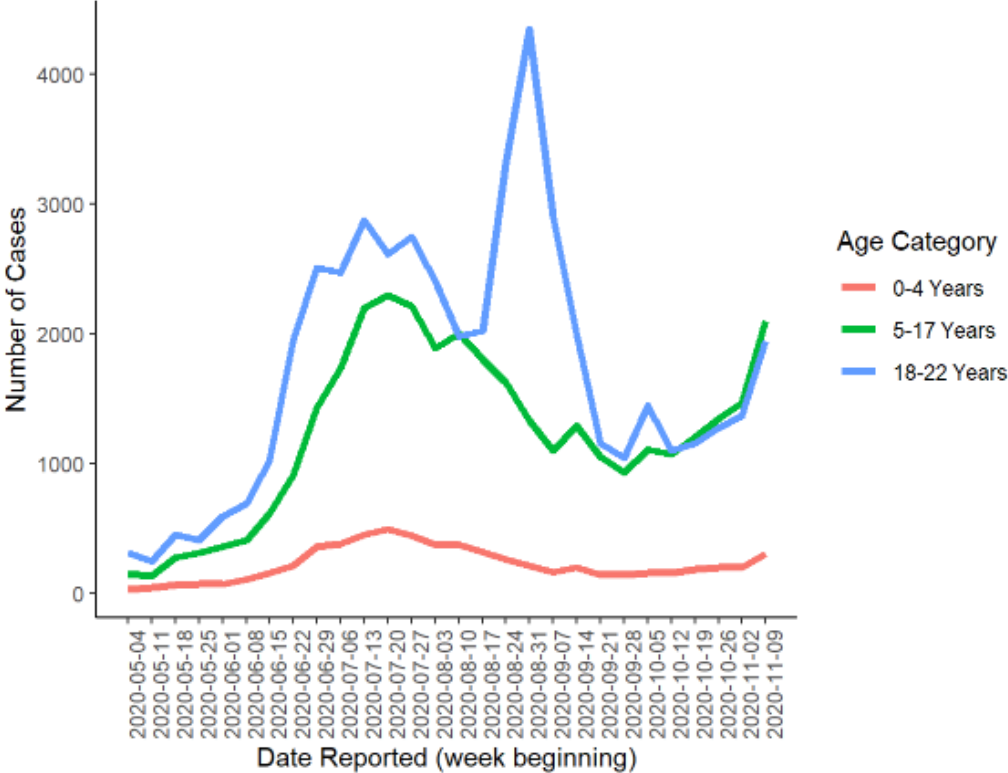
The Georgia Department of Public Health monitors influenza (flu) activity year-round throughout the state with the help of volunteer sentinel healthcare providers. Influenza activity is calculated based on the percentage of provider visits that are for "influenza-like illness" (fever >100° F AND cough and/or sore throat). Click on this link to see the [Weekly Flu Surveillance Report](#).

All Lab Positive (PCR and Antigen) COVID-19 Cases Among K-12 School Aged Children*



*Report reflects week of Nov. 9-15

All Lab Positive (PCR and Antigen) COVID-19 Cases by Age Category (Ages 0-22)*



*Report reflects week of Nov. 9-15

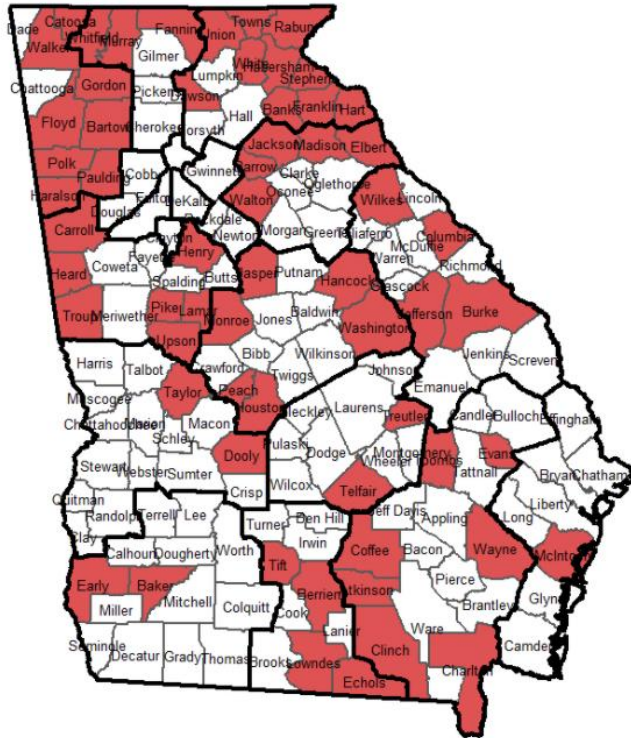
Outbreaks

Nov. 15-21: **98 (increase of 25 from previous week)**

These outbreaks are occurring in settings where people are physically congregating and underscore the need for physical distancing and source control. The highest number of outbreaks occurred in schools, long-term care facilities, correctional facilities and workplaces.

Setting	11/15-11/21	11/8-11/14	Grand Total
LONG-TERM CARE FACILITY/NURSING HOME	17	20	886
SCHOOL	32	11	527
WORKPLACE	14	11	334
PRISON/JAIL	7	5	280
MANUFACTURING FACILITY	5	3	206
RESTAURANT OR DELI	3	1	117
CHURCH/TEMPLE	2	6	116
DAY CARE CENTER	3	2	94
OTHER CONGREGATE SETTING		2	94
HOSPITAL	2	4	83
OTHER		1	83
FOOD PRODUCTION FACILITY			56
OFFICE SETTING	5	2	56
OUTPATIENT (NON-DIALYSIS)	1		56
SHELTER	1		41
GROCERY STORE	2	1	37
OTHER INPATIENT FACILITY/DETOX FACILITY	1	2	36
FARM			20
CONSTRUCTION SITE			19
MENTAL HOSPITAL			18
BAR/ENTERTAINMENT VENUE			14
FUNERAL			13
HOTEL	1		10
CAMP			9
COMMUNITY			9
PRIVATE HOME		1	9
MILITARY FACILITY	1		8
WEDDING RECEPTION		1	8
DIALYSIS CENTER			7
MENTAL HEALTH (NON-HOSPITAL)	1		6
RESORT			3
PICNIC/COOKOUT/POTLUCK			2
WORKPLACE CAFETERIA			2
BANQUET FACILITY			1
COMMERCIAL PRODUCT			1
CONVENTION CENTER			1
PET STORE			1
SWIMMING POOL			1
WATER PARK			1

Counties with High Transmission Indicators*



*By county of residence, report reflects Nov. 7-20

For updates on COVID-19, follow @GaDPH and @GovKemp on Twitter and @GaDPH and @GovKemp on Facebook.

For information about COVID-19, visit <https://dph.georgia.gov/novelcoronavirus> or <https://www.cdc.gov/coronavirus/2019-ncov/index.html>.

###