



EMORY  
UNIVERSITY  
SCHOOL OF  
MEDICINE

PEACH

Prevention Epicenter of Emory  
and Atlanta Consortium Hospitals

# Prevention EpiCenter of Emory and Atlanta Consortium Hospitals (PEACH) Overview

Jesse Jacob

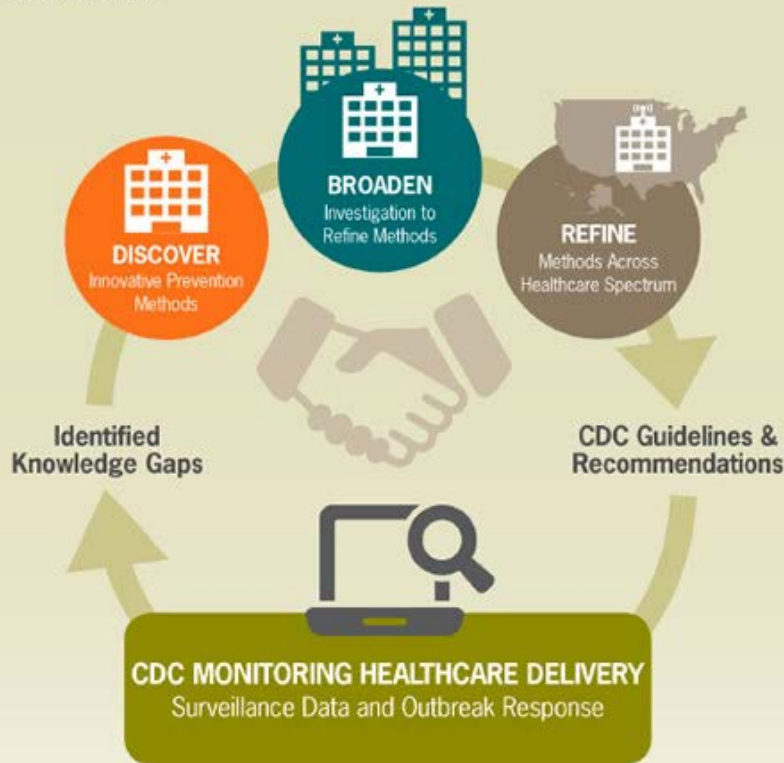
Georgia EIP Conference

March 24, 2017

# CDC's Prevention Epicenters Program

## Innovations to Improve Patient Safety

CDC guides and collaborates with Prevention Epicenters to protect patients by filling prevention knowledge gaps identified by CDC's outbreak response and surveillance data.



Prevention Epicenters: Linking Academic Partners with CDC's Data and Expertise

## Locations



CENTERS FOR DISEASE CONTROL AND PREVENTION



**EMORY**  
UNIVERSITY  
SCHOOL OF  
MEDICINE

**PEACH**

**Prevention Epicenter of Emory  
and Atlanta Consortium Hospitals**



**EMORY**  

---

NELL HODGSON  
WOODRUFF  
SCHOOL OF  
NURSING



**EMORY**  
UNIVERSITY  
SCHOOL OF  
MEDICINE

**Emory Antibiotic  
Resistance Center**

Project 1:

*Integrated Virological and Human  
Factors Analysis of PPE Doffing*

Lead: Lisa Casanova



Children's<sup>SM</sup>  
Healthcare of Atlanta



Columbus Regional Health

Project 2:

*Making PPE Doffing Safer with Design*

Lead: Craig Zimring

EMORY  
UNIVERSITY  
HOSPITAL



Project 3:

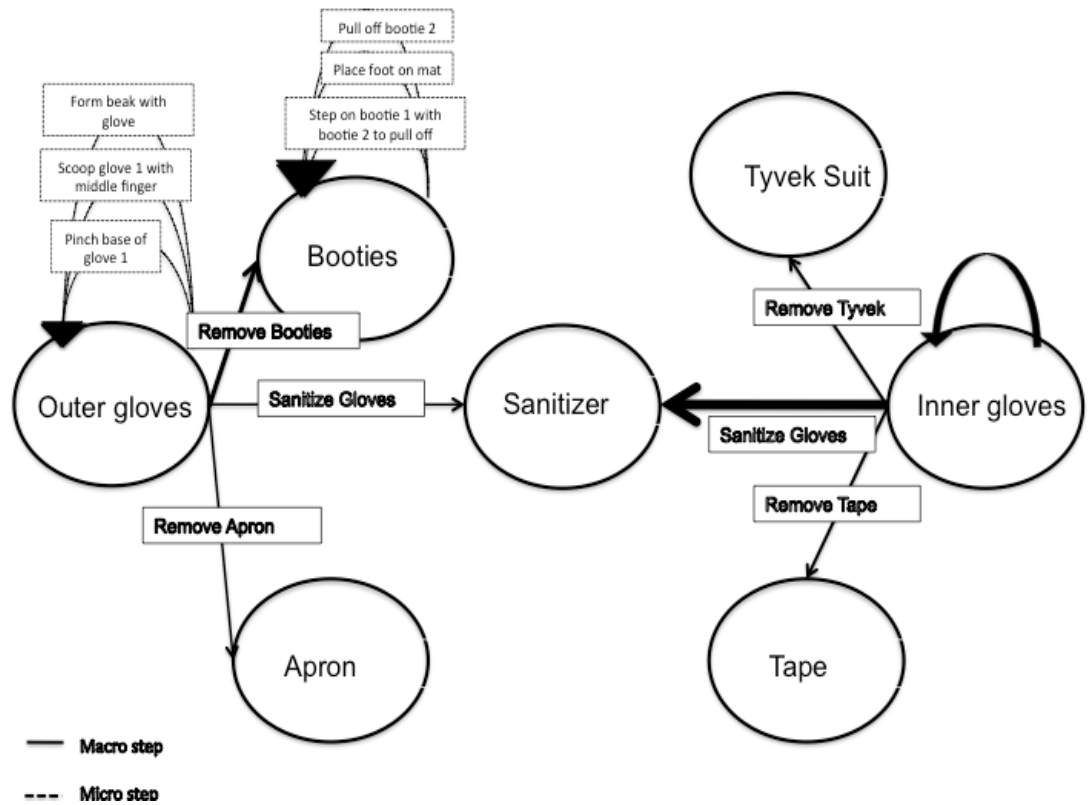
*Improving Hand Hygiene*

Lead: James Steinberg

EMORY  
UNIVERSITY  
HOSPITAL  
MIDTOWN

EMORY  
JOHNS CREEK  
HOSPITAL

# Project 1: Integrated virological and human factors analysis of complex PPE doffing



# Project 2:

Reducing contamination during donning and doffing of PPE using the built environment



# Project 3

## Comparing Feedback Strategies using an Automated Hand Hygiene System



Table. Study design for interventions by site

	Period 0	Period 1	Period 2	Period 3	Period 4	Period 5	Period 6	Period 7
Hospital A Group 1	Installation, testing, and validation	Baseline	Group feedback	Group feedback+ Individual feedback	Group feedback	Individual feedback + voice reminder	Group feedback only	Optimize feedback and reminder process
Hospital A Group 2	Installation, testing, and validation	Baseline	Group feedback	Group feedback + voice reminder	Group feedback	Individual feedback + voice reminder	Group feedback only	Optimize feedback and reminder process
Hospital B	Installation, testing, and validation	Baseline	Test voice reminder strategies	Group feedback + Voice reminder	Randomize participants: Individual feedback vs no individual feedback			Optimize feedback and reminder process
Qualitative study			Interviews				Interviews	

# Abbreviated Acknowledgements

Lisa Casanova/Georgia State

- Kimberly Erukunuakpor

Frank Durso/Georgia Tech Human Factors Team

- Joel Mumma
- Christy Gipson
- Ashley Ferguson\*

Craig Zimring/Georgia Tech Design Team

- Jennifer DuBose
- Megan Denham\*
- Chelsey Kamson

Grady Memorial Hospital

- Susan Ray

Children's Healthcare of Atlanta

- Andi Shane

Infection preventionists

Emory Infectious Diseases

- Jay Steinberg
- Colleen Kraft
- Ashley Tippet
- Victoria Walsh

Emory School of Nursing

- Bonnie Jennings

Emory Johns Creek Hospital

- Hasan Shabbir
- Maggie Whitson
- Marcia Postal-Ranney\*

Hand Hygiene Consultant

- John Boyce

Internal Advisory Board

Biocontainment unit leads

