

Ticks feed by inserting their mouthparts into the skin of their host and slowly sucking in blood. Sometimes **humans act as hosts** for ticks, causing tick-borne diseases to be an important public health problem. 🦋

Ticks are **commonly found** in shady areas, moist ground litter, tall grass, brush, and low tree branches, and along trails in the woods. They can also be found in backyards that back up to woody areas. 🦋

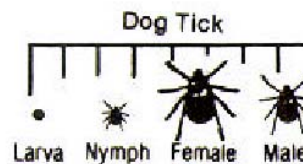
To remove a tick, grasp the tick as close to the skin surface as possible with fine-tipped tweezers. Pull the tick straight out slowly. Wash and treat the bite area with a disinfectant. **Not all ticks carry diseases**, but see your doctor if you develop early symptoms of tick-borne disease within the next 1 to 4 weeks. 🦋

American Dog Tick (*Dermacentor variabilis*)

- 🦋 Second most common tick in Georgia
- 🦋 Transmits the bacterium that causes Rocky Mountain spotted fever
- 🦋 Requires attachment for at least 4 hours to cause illness



(one inch scale)



Lone Star Tick (*Amblyomma americanum*)

- 🦋 Most common tick in Georgia
- 🦋 Transmits the bacteria that cause human monocytic ehrlichiosis (HME) and southern tick-associated rash illness (STARI)



larva, nymph, adult female, and adult male Lone Star tick (one inch scale)

Black-legged Tick or "Deer Tick" (*Ixodes scapularis*)

- 🦋 Transmits the bacteria that cause Lyme disease and human granulocytic anaplasmosis (HGA)
- 🦋 Requires attachment for at least 24 hours to cause illness



Black-legged tick