

Formula Algorithm for Children on Georgia WIC

Tatyana Hofmekler, MD, MScJay Hochman, MDStanley Cohen, MD

Kylia Crane, RDN, LDKristen Christie, MS, RDN, LDTodd Stormant, RD, LD

In accordance with federal civil rights law and U.S. Department of Agriculture (USDA) civil rights regulations and policies, this institution is prohibited from discriminating on the basis of race, color, national origin, sex (including gender identity and sexual orientation), disability, age, or reprisal or retaliation for prior civil rights activity.

Program information may be made available in languages other than English. Persons with disabilities who require alternative means of communication to obtain program information (e.g., Braille, large print, audiotape, American Sign Language), should contact the responsible state or local agency that administers the program or USDA's TARGET Center at (202) 720-2600 (voice and TTY) or contact USDA through the Federal Relay Service at (800) 877-8339.

To file a program discrimination complaint, a Complainant should complete a Form AD-3027, USDA Program Discrimination Complaint Form which can be obtained online at: <https://www.usda.gov/sites/default/files/documents/ad-3027.pdf>, from any USDA office, by calling (866) 632-9992, or by writing a letter addressed to USDA. The letter must contain the complainant's name, address, telephone number, and a written description of the alleged discriminatory action in sufficient detail to inform the Assistant Secretary for Civil Rights (ASCR) about the nature and date of an alleged civil rights violation. The completed AD-3027 form or letter must be submitted to USDA by:

(1) mail:
U.S. Department of Agriculture
Office of the Assistant Secretary for Civil Rights
1400 Independence Avenue, SW Washington,
D.C. 20250-9410;

(2) fax: (833) 256-1665 or (202) 690-7442;

(3) email: program.intake@usda.gov

This institution is an equal opportunity provider.

Revised 2025

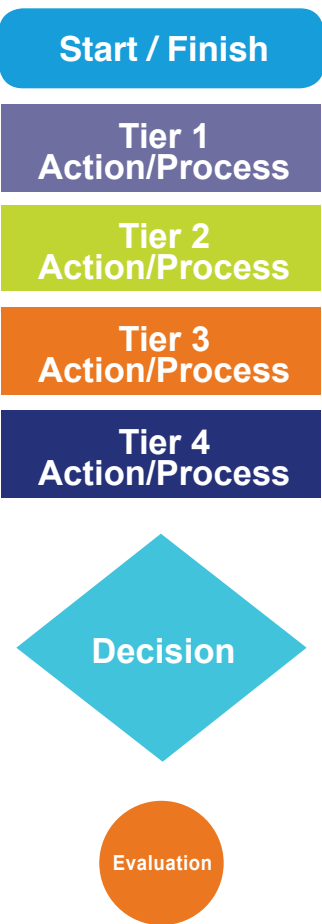
Georgia Chapter

American Academy of Pediatrics
DEDICATED TO THE HEALTH OF ALL CHILDREN®



Formula Algorithm for Children on Georgia WIC

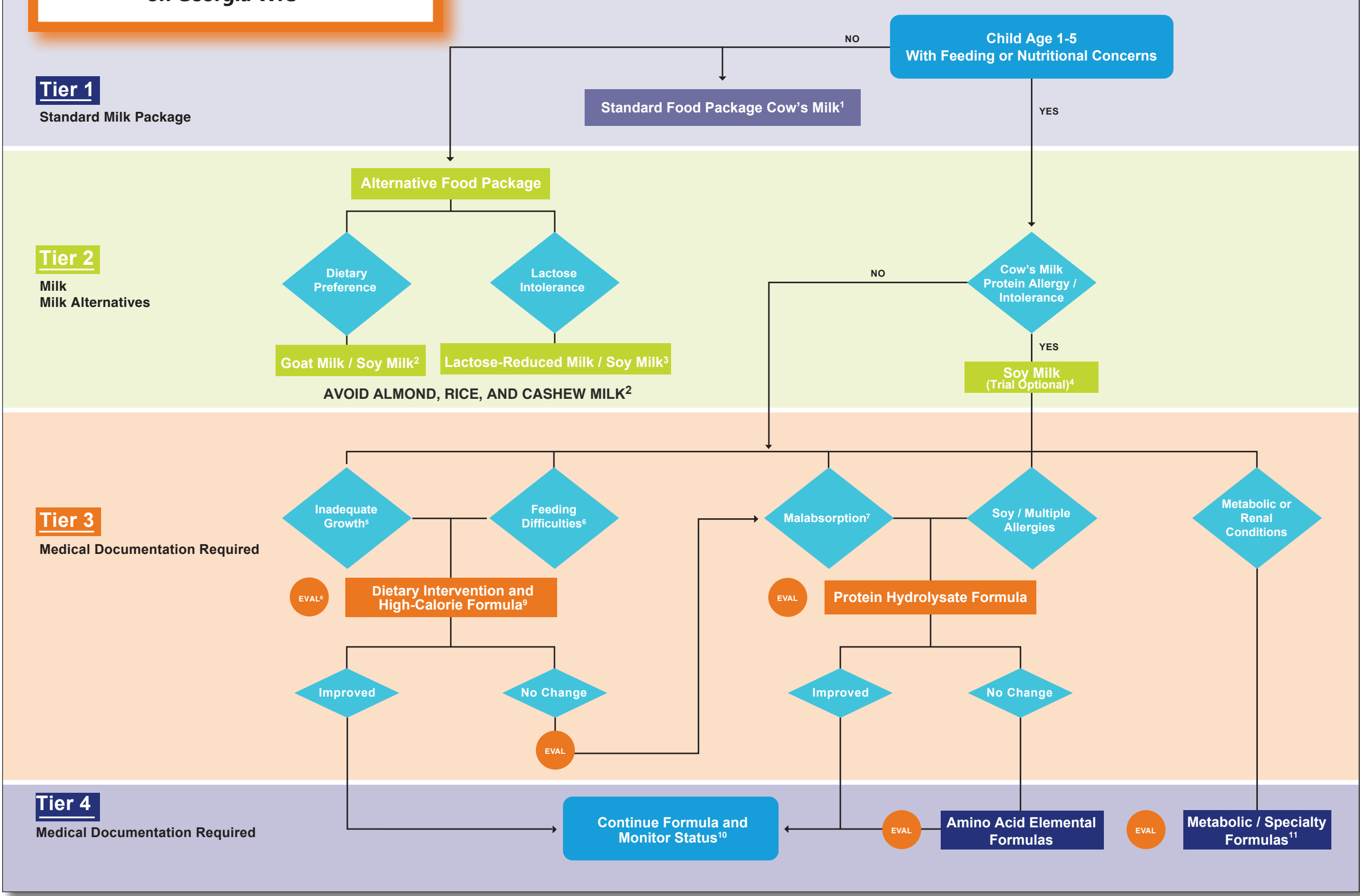
Legend



Georgia Chapter



The Child Formula Algorithm and Resource Guide was developed by Tatyana Hofmekler, MD, MSc | Jay Hochman, MD | Stanley Cohen, MD | Kyliya Crane, RDN, LD | Kristen Christie, MS, RDN, LD | Todd Stormant, RD, LD, through the Georgia Special Supplemental Nutrition Program for Women, Infants and Children (WIC) and Georgia Chapter of the American Academy of Pediatrics partnership. The project was funded by the WIC federal grant from USDA Food and Nutrition Services. This algorithm and resource guide may be reproduced with written permission from Georgia WIC and acknowledgement of authorship.



1. The Georgia WIC Program provides whole milk to children age 1-2 years old, and low-fat milk for all children over the age of 2. The Georgia WIC Approved Foods List provides details of items eligible for the Standard Food Package and Alternative Food Packages. The current publication of the Georgia WIC Approved Foods List is available at wic.ga.gov.
2. Soy Milk can be used as an alternative to cow's milk and provides sufficient protein. Other milk alternatives, such as almond, rice, and cashew milk, tend to have lower protein content. The United States Department of Agriculture (USDA) does not approve rice, almond, or cashew milks for use in the WIC Program. Pea milk is considered an appropriate milk alternative for children due to protein content, but is not approved for use in the WIC Program. Most available goat milk does not provide sufficient amounts of folate and is not recommended. However, Georgia WIC provides folate fortified whole goat milk to meet dietary and cultural needs.
3. Lactose intolerance is an infrequent issue for children under age 5. Lactose reduced milk is not recommended for cow's milk protein allergies as it still contains milk proteins. As an additional option, soy milk is also lactose-free.
4. Studies demonstrate that 10-14% of infants with cow's milk protein allergy also have reactions to soy. Those who have non-IgE

reactions to cow's milk may have a 40% cross reactivity to soy. Thus, the majority of infants are likely to tolerate soy. This allows most children to use soy milk safely and with less expense than immediately employing an extensively hydrolyzed casein formula. Also, many children outgrow milk protein allergies between 6-18 months of age. Goat milk is not recommended for children with cow's milk protein allergy. In studies, the risk of allergy (resulting in symptoms) to goat milk in a person with cow's milk protein allergy is about 90%.
5. Inadequate growth may present as underweight (weight for height or Body Mass Index (BMI) less than the 5th percentile for age), no weight gain for greater than 3 months, or failure to thrive, and may be seen with cardiovascular or pulmonary conditions.
6. Feeding difficulties may include decreased intake, neurodevelopmental delays, oral motor issues, textural issues, autism spectrum disorders, and tube feeding. When tube feeding is indicated, a pediatric gastroenterologist and a dietitian with experience in pediatrics should work with the family to determine nutritional needs and a feeding route that works best for the patient. A full listing of the Georgia WIC approved enteral products which includes intact proteins, blenderized, elemental, calorie dense, and reduced calorie formulas are available on the Georgia WIC website, wic.ga.gov.

7. Formulas high in medium-chain triglyceride (MCT) oils are helpful for many conditions that cause malabsorption. These formulas are also indicated in cardiovascular and pulmonary disorders, chylous effusions, and for some forms of liver disorders.
8. Evaluations should be directed by the pediatrician/primary care provider and can include subspecialty care.
9. Dietary intervention is vital for children with feeding difficulties and inadequate growth. Unless contraindicated, increasing calories from food should be the first step considered before using a commercially available, high-calorie formula to supplement the child's diet. Dietary intervention may involve a feeding therapy program or specialized interdisciplinary team to address the many facets of feeding difficulties.
10. When a patient is doing well on an amino acid formula, it is reasonable to offer a trial of a protein hydrolysate or a plant-based protein formula to assess tolerance.
11. All Georgia WIC approved formulas, including metabolic and specialty formulas for chronic conditions, are available on the Georgia WIC website, wic.ga.gov.

Formula Algorithm for Children on Georgia WIC - Resource Guide

Tatyana Hofmekler, MD, MSc | Jay Hochman, MD | Stanley Cohen, MD | Kyla Crane, RDN, LD | Kristen Christie, MS, RDN, LD | Todd Stormant, RD, LD

TIER	PRODUCT CATEGORY	WIC-APPROVED MILK OR SPECIALTY FORMULA	MANUFACTURER / DISTRIBUTOR	FORM	SIZE	FLAVOR	COMPOSITION	MEDICAL DOCUMENTATION REQUIRED	ICD-10 / RECOMMENDATIONS <small>OTHER POTENTIAL DIAGNOSES MAY BE INDICATED AND ARE NOT LIMITED TO ONLY THOSE LISTED</small>
TIER 1	COW'S MILK*	Multiple brands	Multiple brands	Liquid	Gallon or 1/2 gallon	Unflavored	Milk protein Vitamin A Vitamin D	No	Healthy children with no nutritional or feeding concerns**
				Dry / powdered (non-fat / lowfat only)	3-quart box				
				Evaporated	12 ounces				
				Shelf stable/ Ultra-high temperature (UHT)	1 quart				
TIER 2	LACTOSE-REDUCED MILK	Multiple brands	Multiple brands	Liquid	Gallon 1/2 gallon 96 ounces (3 quart)	Unflavored	Milk protein Calcium Vitamin D fortified	No	ICD-10: Lactose Intolerance/ E73.9
	SOY-BASED BEVERAGES	8th Continent® Soymilk	Stremick's Heritage Foods	Liquid	1/2 gallon	Original Vanilla	Lactose-free Cow's Milk protein-free Dietary Preference: Kosher / Halal Vegetarian / Vegan	No	ICD-10: Cow's Milk Allergy/ Z91.011 Lactose Intolerance/ E73.9 Galactosemia/ E74.21
		Silk® Soymilk	White Wave Foods			Original			
	WHOLE GOAT MILK	Meyenberg™ Goat Milk	Meyenberg	Liquid	1 quart 1/2 gallon 12 ounces evaporated	Unflavored	Milk protein Vitamin D fortified Folic Acid fortified Dietary Preference: Kosher	Medical documentation needed for children 2 years and older.	

All Georgia WIC approved formulas, including metabolic and specialty formulas for chronic conditions, are available on the Georgia WIC website, wic.ga.gov.

©2025 Georgia WIC

* The Georgia Special Supplemental Nutrition Program for Women, Infants, and Children (WIC) provides whole milk to children ages 1-2 years and low-fat (1%), or skim milk to children 2-5 years of age.

Reduced fat (2%) milk is not available through the Georgia WIC Program.

** Shelf Stable/UHT available for those with refrigeration concerns or limitations

Georgia Chapter

American Academy of Pediatrics
DEDICATED TO THE HEALTH OF ALL CHILDREN®



Formula Algorithm for Children on Georgia WIC - Resource Guide

TIER	PRODUCT CATEGORY	WIC-APPROVED MILK OR SPECIALTY FORMULA	MANUFACTURER / DISTRIBUTOR	FORM	SIZE	FLAVOR	COMPOSITION	MEDICAL DOCUMENTATION REQUIRED	ICD-10 / RECOMMENDATIONS <small>OTHER POTENTIAL DIAGNOSES MAY BE INDICATED AND ARE NOT LIMITED TO ONLY THOSE LISTED</small>
TIER 3	PROTEIN HYDROLYSATE	Nutramigen™ with Enflora LGG® Toddler	Mead Johnson	Powder	12.6 ounces	Unflavored	Lactose-free Sucrose-free Galactose-free Probiotic Lactobacillus rhamnosus GG (LGG)	Yes	ICD-10: Cow's Milk Allergy / Z91.011 Soy Allergy / Z91.018 Food Protein Induced Enterocolitis Syndrome (FPIES) / K52.21 Malabsorption / K90.49 Recommendation: Recommended for ages 9-36 months
	BLENDED / HIGH-VISCOSITY	Compleat® Pediatric Original 1.0	Nestlé	Ready-to-feed	8.45 ounces	Unflavored	Blenderized (made from real food ingredients) Nutritionally complete Lactose-free No soy or corn	Yes	ICD-10: Tube Feeding / Z93.1 GI Impairment / K92.9 Oral Motor Feeding Aversions / F98.29 Malnutrition / E46 Recommendation: Not recommended for oral intake
		Compleat® Pediatric Original Reduced Calorie 0.6	Nestlé	Ready-to-feed	8.45 ounces	Unflavored	Blenderized (made from real food ingredients) Nutritionally complete Lactose-free No soy or corn	Yes	ICD-10: Tube Feeding / Z93.1 GI Impairment / K92.9 Oral Motor Feeding Aversions / F98.29 Recommendation: Not recommended for oral intake
		Compleat® Pediatric Organic Blends	Nestlé	Ready-to-feed	10.1 ounces	Chicken-Garden Blend Plant-based Blend	Blenderized Organic whole foods Vitamins Minerals None of the common food allergens No GMO ingredients	Yes	ICD-10: Tube Feeding / Z93.1 GI Impairment / K92.9 Oral Motor Feeding Aversions / F98.29 Recommendation: Not recommended for oral intake
		Nourish®	Functional Formularies	Ready-to-feed	12 ounces	Unflavored	Nutritionally dense USDA Certified Organic Whole food meal replacement Gluten-free Tree nut-free (produced in a facility where tree nuts are used) Dairy-free Soy-free Corn-free GMO-free BPA-free packaging	Yes	ICD-10: Tube Feeding / Z93.1 GI Impairment / K92.9 Oral Motor Feeding Aversions / F98.29 Malnutrition / E46 Recommendation: Not recommended for oral intake

Formula Algorithm for Children on Georgia WIC - Resource Guide

TIER	PRODUCT CATEGORY	WIC-APPROVED MILK OR SPECIALTY FORMULA	MANUFACTURER / DISTRIBUTOR	FORM	SIZE	FLAVOR	COMPOSITION	MEDICAL DOCUMENTATION REQUIRED	ICD-10 / RECOMMENDATIONS <small>OTHER POTENTIAL DIAGNOSES MAY BE INDICATED AND ARE NOT LIMITED TO ONLY THOSE LISTED</small>
TIER 3	HIGH-CALORIE	Boost® Kid Essentials™ 1.0	Nestlé	Ready-to-feed	8 ounces	Chocolate Strawberry Vanilla	Nutritionally complete Milk protein Lactose-free Gluten-free MCT oil Dietary Preference: Kosher	Yes	ICD-10: Failure To Thrive (FTT)/ R62.51 Oral Motor Feeding Aversions/ F98.29 Neurodevelopmental Disorders/ R62.50 Malnutrition/ E46
		Boost® Kid Essentials™ 1.5	Nestlé	Ready-to-feed	8 ounces	Chocolate Strawberry Vanilla	Nutritionally complete Milk protein Lactose-free Gluten-free MCT oil Dietary Preference: Kosher	Yes	ICD-10: Failure To Thrive (FTT)/ R62.51 Oral Motor Feeding Aversions/ F98.29 Neurodevelopmental Disorders/ R62.50 Malnutrition/ E46
		Boost® Kid Essentials™ 1.5 with fiber	Nestlé	Ready-to-feed	8 ounces	Vanilla	Nutritionally complete Milk protein Lactose-free Gluten-free MCT oil Dietary Preference: Kosher	Yes	ICD-10: Failure To Thrive (FTT)/ R62.51 Oral Motor Feeding Aversions/ F98.29 Neurodevelopmental disorders/ R62.50 Recommendation: Added fiber indicated for bowel management

Formula Algorithm for Children on Georgia WIC - Resource Guide

TIER	PRODUCT CATEGORY	WIC-APPROVED MILK OR SPECIALTY FORMULA	MANUFACTURER / DISTRIBUTOR	FORM	SIZE	FLAVOR	COMPOSITION	MEDICAL DOCUMENTATION REQUIRED	ICD-10 / RECOMMENDATIONS <small>OTHER POTENTIAL DIAGNOSES MAY BE INDICATED AND ARE NOT LIMITED TO ONLY THOSE LISTED</small>
TIER 3	HIGH-CALORIE	Compleat® Pediatric Standard 1.0	Nestlé	Ready-to-feed	8.45 ounces	Vanilla	No artificial flavors, colors, or sweeteners Free from common allergens Dietary Preference: Plant-based / Vegan	Yes	ICD-10: Tube Feeding/ Z93.1 GI Impairment/ K92.9 Failure To Thrive (FTT)/ R62.51 Oral Motor Feeding Aversions/ F98.29 Malnutrition/ E46 Recommendation: Oral or tube-feeding supplement
		Compleat® Pediatric Standard 1.4	Nestlé	Ready-to-feed	8.45 ounces	Vanilla	No artificial flavors, colors, or sweeteners Free from common allergens Dietary Preference: Plant-based / Vegan	Yes	ICD-10: Tube Feeding/ Z93.1 GI Impairment/ K92.9 Failure To Thrive (FTT)/ R62.51 Oral Motor Feeding Aversions/ F98.29 Malnutrition/ E46 Neurodevelopmental disorders/ R62.50 Recommendations: Oral or tube-feeding supplement Specifically designed for children 1-13 years with increased energy needs and/or decreased fluid needs
		Kate Farms® Pediatric Standard 1.2	Kate Farms	Ready-to-feed	8.45 ounces	Chocolate Vanilla	USDA Certified Organic Free from common allergens Dietary Preference: Plant-based / Vegan	Yes	ICD-10: Failure To Thrive (FTT)/ R62.51 Tube Feeding/ Z93.1 Oral Motor Feeding Aversions/ F98.29 Neurodevelopmental Disorders/ R62.50 Recommendation: Oral or tube-feeding supplement
		Nutren® Junior	Nestlé	Ready-to-feed	8.45 ounces	Vanilla	Nutritionally complete 50% Whey protein Lactose-free Gluten-free MCT oil	Yes	ICD-10: Tube Feeding/ Z93.1 GI Impairment/ K92.9 Failure To Thrive (FTT)/ R62.51 Malnutrition/ E46 Neurodevelopmental disorders/ R62.50 Recommendation: Oral or tube-feeding supplement
		Nutren® Junior Fiber	Nestlé	Ready-to-feed	8.45 ounces	Unflavored Vanilla	Nutritionally complete 50% Whey protein Lactose-free Gluten-free MCT oil PREBIO1™ (soluble fiber and insoluble fiber blend)	Yes	ICD-10: Tube Feeding/ Z93.1 GI Impairment/ K92.9 Failure to Thrive (FTT)/ R62.51 Malnutrition/ E46 Neurodevelopmental disorders/ R62.50 Recommendations: Added fiber (soluble and insoluble fiber blend) indicated for bowel management Oral or tube-feeding supplement

Formula Algorithm for Children on Georgia WIC - Resource Guide

TIER	PRODUCT CATEGORY	WIC-APPROVED MILK OR SPECIALTY FORMULA	MANUFACTURER / DISTRIBUTOR	FORM	SIZE	FLAVOR	COMPOSITION	MEDICAL DOCUMENTATION REQUIRED	ICD-10 / RECOMMENDATIONS <small>OTHER POTENTIAL DIAGNOSES MAY BE INDICATED AND ARE NOT LIMITED TO ONLY THOSE LISTED</small>
TIER 3	HIGH-CALORIE	PediaSure® Enteral 1.0	Abbott	Ready-to-feed	8 ounces	Vanilla	Milk protein Lactose-free Prebiotic short-chain fructooligosaccharides (scFOS) MCT oil Dietary Preference: Kosher / Halal	Yes	ICD-10: Tube Feeding/ Z93.1 GI Impairment/ K92.9 Failure To Thrive (FTT)/ R62.51 Oral Motor Feeding Aversions/ F98.29 Neurodevelopmental Disorders/ R62.50 Recommendation: Not recommended for oral intake
		PediaSure® Enteral 1.0 with Fiber	Abbott	Ready-to-feed	8 ounces	Vanilla	Milk protein Lactose-free Prebiotic short-chain fructooligosaccharides (scFOS) MCT oil Dietary Preference: Kosher / Halal	Yes	ICD-10: Tube Feeding/ Z93.1 GI Impairment/ K92.9 Failure To Thrive (FTT)/ R62.51 Oral Motor Feeding Aversions/ F98.29 Neurodevelopmental Disorders/ R62.50 Recommendations: Not recommended for oral intake Added fiber indicated for bowel management needs and/or decreased fluid needs
		PediaSure® Grow & Gain	Abbott	Ready-to-feed	8 ounces	Banana Chocolate Strawberry Vanilla	Milk protein Lactose-free DHA Prebiotic short-chain fructooligosaccharides (scFOS)	Yes	ICD-10: Failure To Thrive (FTT) / R62.51 Avoidant/ Restrictive Food Intake Disorder/ F50.82 Neurodevelopmental Disorders / R62.50 Oral Motor Feeding Aversion/ F98.29
		PediaSure® Grow & Gain with fiber	Abbott	Ready-to-feed	8 ounces	Chocolate Strawberry Vanilla	Milk protein Lactose-free DHA Prebiotic short-chain fructooligosaccharides (scFOS) Dietary Preference: Kosher / Halal	Yes	ICD-10: Failure to Thrive (FTT)/ R62.51 Avoidant/restrictive food intake disorder/ F50.82 Neurodevelopmental disorders / R62.50 Oral motor feeding
		PediaSure® Sidekicks Shake	Abbott	Ready-to-feed	8 ounces	Chocolate Strawberry Vanilla	Milk protein Lactose-free Dietary Preference: Kosher / Halal	Yes	ICD-10: Failure to Thrive (FTT)/ R62.51 Oral motor feeding aversion/ F98.29 Neurodevelopmental disorders / R62.50

Formula Algorithm for Children on Georgia WIC - Resource Guide

TIER	PRODUCT CATEGORY	WIC-APPROVED MILK OR SPECIALTY FORMULA	MANUFACTURER / DISTRIBUTOR	FORM	SIZE	FLAVOR	COMPOSITION	MEDICAL DOCUMENTATION REQUIRED	ICD-10 / RECOMMENDATIONS <small>OTHER POTENTIAL DIAGNOSES MAY BE INDICATED AND ARE NOT LIMITED TO ONLY THOSE LISTED</small>
TIER 4	AMINO ACID ELEMENTAL	Alfamino® Junior	Nestlé	Powder	14.1 ounces	Unflavored Vanilla	Amino acid-based elemental 65% of fat is MCT oil Hypoallergenic	Yes	ICD-10: Oral Motor Feeding Aversions/ F98.29 Malabsorption/ K90 GI Impairment/K92.9 FPIES/K52.21 Multiple Food Protein Intolerance/ K52.21 Recommendation: Oral or tube-feeding supplement
		Compleat® Pediatric Peptide 1.5	Nestlé	Ready-to-feed	8.45 ounces	Vegetable & fruit medley	Calorically dense No artificial flavors, colors, or sweeteners Free from common food allergens 40% MCT oil Dietary Preference: Plant-based / Vegan	Yes	ICD-10: Tube Feeding/ Z93.1 GI Impairment/ K92.9 Oral Motor Feeding Aversions/ F98.29 Malnutrition/ E46 Malabsorption/ K90 FPIES/ K52.21 Multiple Food Protein Intolerance/ K52.21 Recommendations: Not recommended for oral intake Specifically designed for children 1-13 years with increased energy needs and/or decreased fluid needs
		Elecare® Jr	Abbott	Ready-to-feed	14.1 ounces	Unflavored Vanilla Chocolate Banana	Nutritionally Complete Amino acid-based Lactose-free 33% MCT oil Hypoallergenic	Yes	ICD-10: Malabsorption/ K90.4 GI Impairment/ K92.9 FPIES/ K52.21 Short Bowel Syndrome/ K91.2 Eosinophilic Esophagitis/ K20.0 Severe Cow's Milk Allergy/ Z91.011 Soy Allergy/ Z91.018 GERD with Esophagitis/ K21.0 GERD without Esophagitis/ K21.9 Multiple Food Protein Intolerance/ K52.21 Recommendation: Oral or tube-feeding supplement
		Kate Farms® Pediatric Peptide 1.0	Kate Farms	Ready-to-feed	8.45 ounces	Vanilla	USDA Certified Organic Calorically dense Free from common food allergens Dietary Preference: Plant-based	Yes	ICD-10: Failure To Thrive (FTT)/ R62.51 Tube Feeding/ Z93.1 GI Impairment/ K92.9 Oral Motor Feeding Aversions/ F98.29 Neurodevelopmental Disorders/ R62.50 FPIES/ K52.21 Recommendation: Oral or tube-feeding supplement
		Kate Farms® Pediatric Peptide 1.5	Kate Farms	Ready-to-feed	8.45 ounces	Plain Vanilla	USDA Certified Organic Calorically dense Free from common food allergens Dietary Preference: Plant-based	Yes	ICD-10: Failure To Thrive (FTT)/ R62.51 Tube Feeding/ Z93.1 GI Impairment/ K92.9 Oral Motor Feeding Aversions/ F98.29 Neurodevelopmental Disorders/ R62.50 Recommendation: Oral or tube-feeding supplement

Formula Algorithm for Children on Georgia WIC - Resource Guide

TIER	PRODUCT CATEGORY	WIC-APPROVED MILK OR SPECIALTY FORMULA	MANUFACTURER / DISTRIBUTOR	FORM	SIZE	FLAVOR	COMPOSITION	MEDICAL DOCUMENTATION REQUIRED	ICD-10 / RECOMMENDATIONS <small>OTHER POTENTIAL DIAGNOSES MAY BE INDICATED AND ARE NOT LIMITED TO ONLY THOSE LISTED</small>
TIER 4	AMINO ACID ELEMENTAL	Neocate® Jr	Nutricia	Powder	14.1 ounces	Chocolate Strawberry Tropical Vanilla Unflavored (with prebiotics) Unflavored (without prebiotics)	Nutritionally complete Prebiotic Fiber MCT oil Based on 100% non-allergenic free amino acids Hypoallergenic	Yes	ICD-10: Malabsorption/ K90.4 GI Impairment/ K92.9 FPIES/ K52.21 Short Bowel Syndrome/ K91.2 Eosinophilic Esophagitis/ K20.0 Severe Cow's Milk Allergy/ Z91.011 Soy Allergy/ Z91.018 GERD with Esophagitis/ K21.0 GERD without Esophagitis/K21.9 Multiple food protein intolerance/K52.21 Recommendation: Oral or tube-feeding supplement
		Neocate® Splash	Nutricia	Ready-to-feed	8 ounces	Grape Orange-Pineapple Tropical Fruit Unflavored Vanilla	Nutritionally Complete Lactose-free Whey-free Soy-free Milk protein-free MCT oil Based on 100% non-allergenic free amino acids Hypoallergenic	Yes	ICD-10: Malabsorption/ K90.4 GI Impairment/ K92.9 FPIES/ K52.21 Short Bowel Syndrome/ K91.2 Eosinophilic Esophagitis/ K20.0 Severe Cow's Milk Allergy/ Z91.011 Multiple Food Protein Intolerance/ K52.21 Recommendation: Oral or tube-feeding supplement
		Nourish® Peptide	Functional Formularies	Ready-to-feed	12 ounces	Unflavored	Whole food Plant-based peptide formula Complete peptide protein Organic coconut MCT oil Hydrolyzed pea protein Free of tree nuts, gluten, dairy, soy, corn, and BPAs.	Yes	ICD-10: Malabsorption/ K90.4 GI Impairment/ K92.9 FPIES/ K52.21 Short Bowel Syndrome/ K91.2 Eosinophilic Esophagitis/ K20.0 Severe Cow's Milk Allergy/ Z91.011 Multiple food protein intolerance/ K52.21 Recommendation: Oral or tube-feeding supplement
		PediaSure® Peptide 1.0	Abbott	Ready-to-feed	8 ounces	Vanilla Strawberry Unflavored	Nutritionally complete Hydrolyzed whey protein Lactose-free Gluten-free Nutraflora® scFOS® (prebiotic fiber) 60% MCT oil Dietary Preference: Kosher / Halal	Yes	ICD-10: Malabsorption/ K90.4 GI Impairment/ K92.9 FPIES/ K52.21 Short Bowel Syndrome/ K91.2 Eosinophilic Esophagitis/ K20.0 Multiple Food Protein Intolerance/ K52.21 Recommendation: Oral or tube-feeding supplement
		PediaSure® Peptide 1.5	Abbott	Ready-to-feed	8 ounces	Vanilla	Nutritionally complete Calorically dense Hydrolyzed whey protein Lactose-free Gluten-free Nutraflora® scFOS® (prebiotic fiber) 60% MCT oil Dietary Preference: Kosher / Halal	Yes	ICD-10: Malabsorption/ K90.4 GI Impairment/ K92.9 FPIES/ K52.21 Short Bowel Syndrome/ K91.2 Eosinophilic Esophagitis/ K20.0 Multiple food protein intolerance/ K52.21 Recommendation: Oral or tube-feeding supplement

Formula Algorithm for Children on Georgia WIC - Resource Guide

TIER	PRODUCT CATEGORY	WIC-APPROVED MILK OR SPECIALTY FORMULA	MANUFACTURER / DISTRIBUTOR	FORM	SIZE	FLAVOR	COMPOSITION	MEDICAL DOCUMENTATION REQUIRED	ICD-10 / RECOMMENDATIONS <small>OTHER POTENTIAL DIAGNOSES MAY BE INDICATED AND ARE NOT LIMITED TO ONLY THOSE LISTED</small>
TIER 4	AMINO ACID ELEMENTAL	Peptamen® Jr	Nestlé	Ready-to-feed	8.45 ounces	Strawberry Unflavored Vanilla	Nutritionally complete Peptide-based Lactose-free 60% of fat is MCT oil Enzymatically hydrolyzed 100% whey protein	Yes	ICD-10: Malabsorption/ K90.4 GI Impairment/ K92.9 FPIES/ K52.21 Short Bowel Syndrome/ K91.2 Eosinophilic Esophagitis/ K20.0 Severe Cow's Milk Allergy/ Z91.011 Multiple Food Protein Intolerance/ K52.21 Crohn's Disease/ K50.00 Recommendation: Oral or tube-feeding supplement
		Peptamen® Jr with fiber	Nestlé	Ready-to-feed	8.45 ounces	Vanilla	Nutritionally complete Peptide-based Lactose-free 60% of fat is MCT oil Enzymatically hydrolyzed 100% whey protein	Yes	ICD-10: GI Impairment/ K92.9 FPIES/ K52.21 Short Bowel Syndrome/ K91.2 Eosinophilic Esophagitis/ K20.0 Severe Cow's Milk Allergy/ Z91.011 Multiple Food Protein Intolerance/ K52.21 Crohn's Disease/ K50.00 Recommendation: Oral or tube-feeding supplement
		Peptamen® Jr PHGG 1.2	Nestlé	Ready-to-feed	8.45 ounces	Vanilla	Nutritionally complete Peptide-base Lactose-free Enzymatically hydrolyzed 100% whey protein 60% of fat from MCT oil Contains 12 g/L partially hydrolyzed guar gum (PHGG) soluble fiber	Yes	ICD-10: Malabsorption/ K90.4 GI Impairment/ K92.9 FPIES/ K52.21 Short Bowel Syndrome/ K91.2 Eosinophilic Esophagitis/ K20.0 Severe Cow's Milk Allergy/ Z91.011 Multiple Food Protein Intolerance/ K52.21 Crohn's Disease/ K50.00 Recommendation: Oral or tube-feeding supplement
		PurAmino® Junior	Mead Johnson	Powder	14.1 ounces	Unflavored Vanilla	100% free amino acids MCT oil DHA Hypoallergenic	Yes	ICD-10: Malabsorption/ K90.4 GI Impairment/ K92.9 FPIES/ K52.21 Short Bowel Syndrome/ K91.2 Eosinophilic Esophagitis/ K20.0 Severe Cow's Milk Allergy/ Z91.011 Multiple Food Protein Intolerance/ K52.21 Recommendation: Oral or tube-feeding supplement
		Tolerex®	Nestlé	Powder	2.82 ounces packets	Unflavored	Nutritionally complete Lactose-free Gluten-free Elemental with 100% free amino acids 2% calories from fat	Yes	ICD-10: Malabsorption/ K90.4 GI Impairment/ K92.9 FPIES/ K52.21 Short Bowel Syndrome/ K91.2 Multiple Food Protein Intolerance/ K52.21 Severe protein & fat malabsorption/ K90.49 Recommendation: Oral or tube-feeding supplement
		Vivonex® Pediatric	Nestlé	Powder	1.7 ounces packets	Unflavored	Nutritionally complete Lactose-free Gluten-free Elemental with 100% free amino acids 70% MCT oil	Yes	ICD-10: Malabsorption/ K90.4 GI Impairment/ K92.9 FPIES/ K52.21 Short Bowel Syndrome/ K91.2 Eosinophilic Esophagitis/ K20.0 Severe Cow's Milk Allergy/ Z91.011 Multiple Food Protein Intolerance/ K52.21 Crohn's Disease/ K50.00 Recommendation: Oral or tube-feeding supplement