

# Georgia Part C Babies Can't Wait (BCW) Program Annual Performance Report (APR) Data

January 1, 2021 - March 31, 2021

State Interagency Coordinating Council (SICC) January 21<sup>st</sup>, 2022

# Annual Performance Report (APR)

---

Submitted annually to the Office of Special Education Programs (OSEP)

- ✓ Evaluates the state's efforts to implement the requirements and purposes of Part C

The APR includes Compliance and Performance Indicators

- Compliance Indicators: Indicators where 100% compliance is the requirement

Indicator 1: Timely Service Delivery

Indicator 7: 45- Day Timeline

Indicator 8: Early Childhood Transition

- Performance Indicators: Indicators that focus on system, child and family outcomes

Indicator 2: Settings

Indicator 5: Child Find Birth to 1

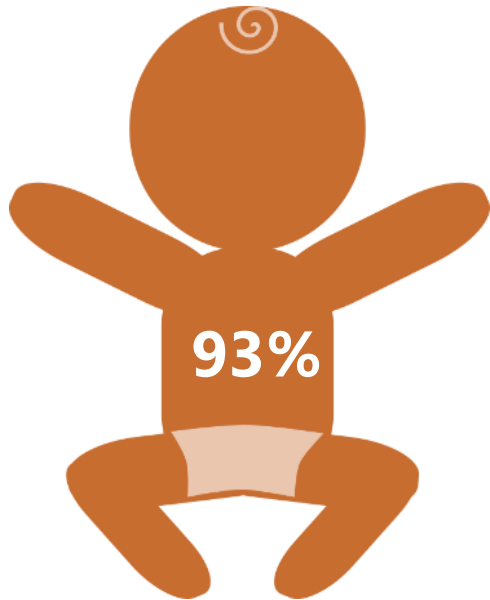
Indicator 3: Child Outcomes

Indicator 6: Child Find Birth to 3

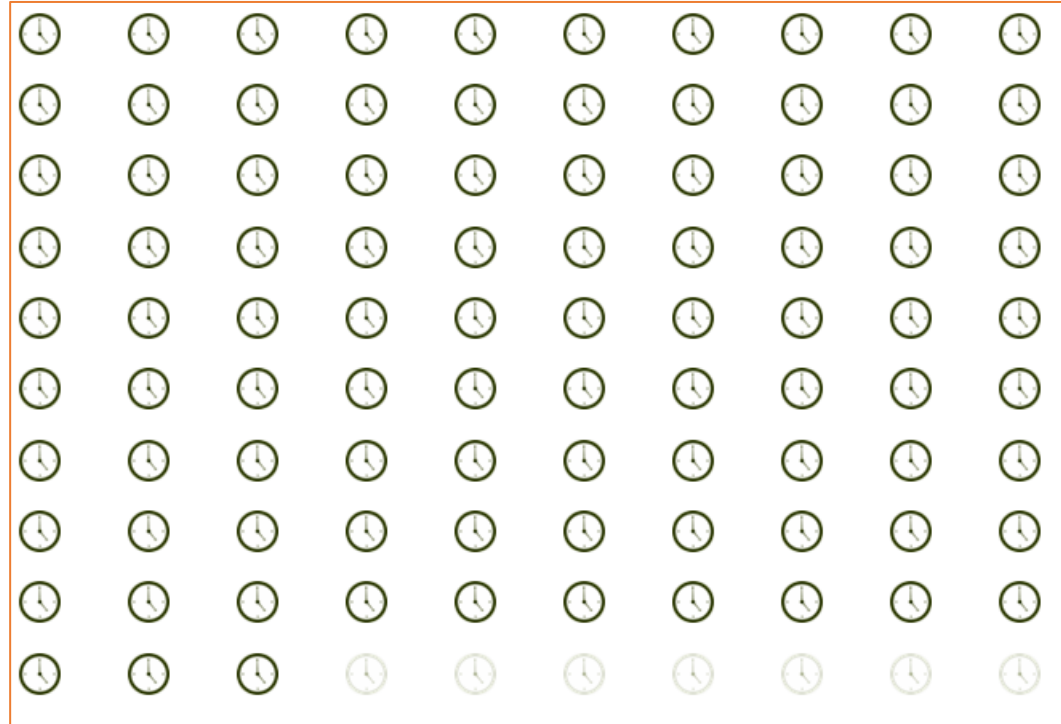
Indicator 4: Family Outcomes

# Indicator 1: Timely Service Delivery

- Percent of infants and toddlers with Individualized Family Service Plans (IFSPs) who receive early intervention services on their IFSPs in a timely manner
- Timely:  $\leq 45$  days between Service Consent Date and Initial Date of Service
- In FFY2020, **93%** of infants and toddlers received timely services



\*Target is 100%



# Indicator 7: 45-Day Timeline

---

- Percent of eligible infants and toddlers with IFSPs for whom an evaluation and assessment and an initial IFSP meeting were conducted within Part C's 45-day timeline
- Timely:  $\leq 45$  days between primary referral date and initial IFSP date
- In FFY2020, **98%** of the infants and toddlers received an initial evaluation, assessment and initial IFSP meeting within 45 days



\*Target is 100%  
IFSP: Individualized Family Service Plan

# Indicator 8: Early Childhood Transition

---

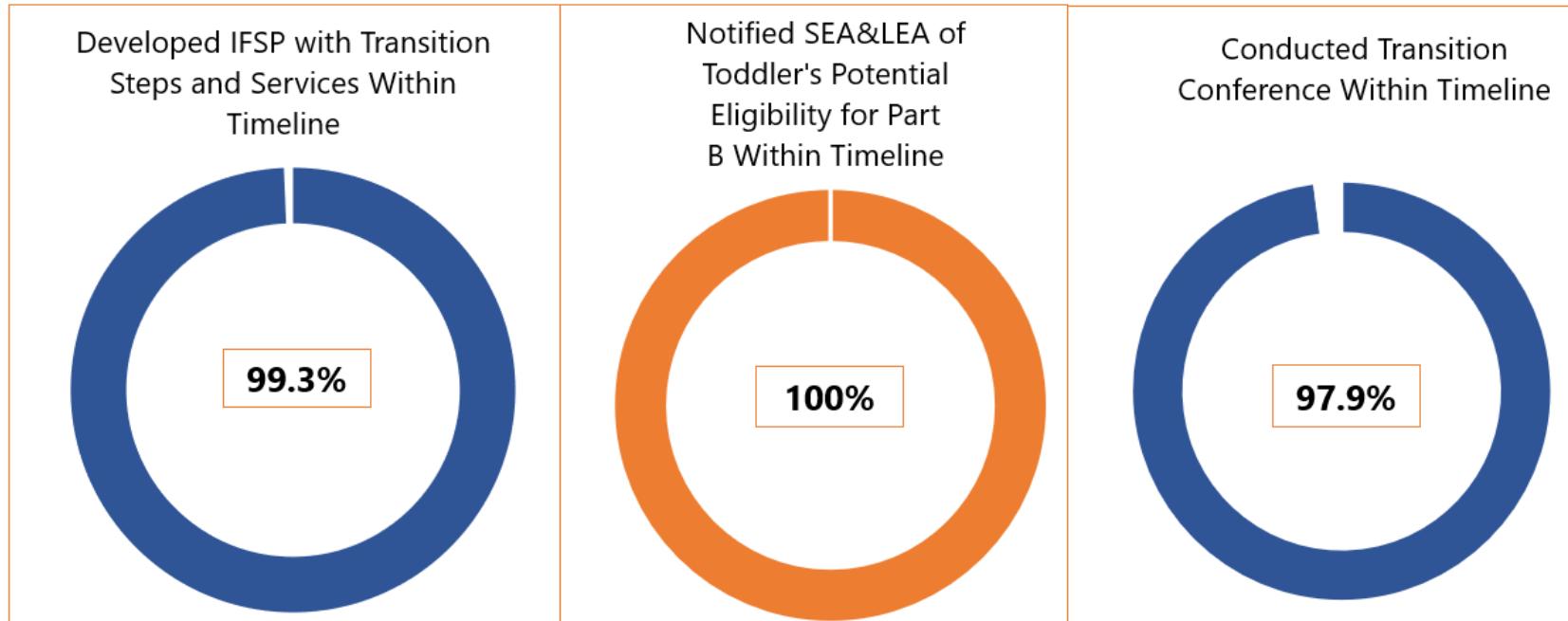
- Percent of all children exiting Part C who received timely transition planning to support the child's transition to preschool and other appropriate community services by their third birthday including:
  - 8A: Timely Transition Steps and Services;
  - 8B: Timely Notification to SEA & LEA; and
  - 8C: Timely Transition Conference

\*Target is 100%

SEA: State Education Agency

LEA: Local Education Agency

# Indicator 8: Early Childhood Transition



8A: Transition Steps& Services

8B: Notification

8C: Transition Conference

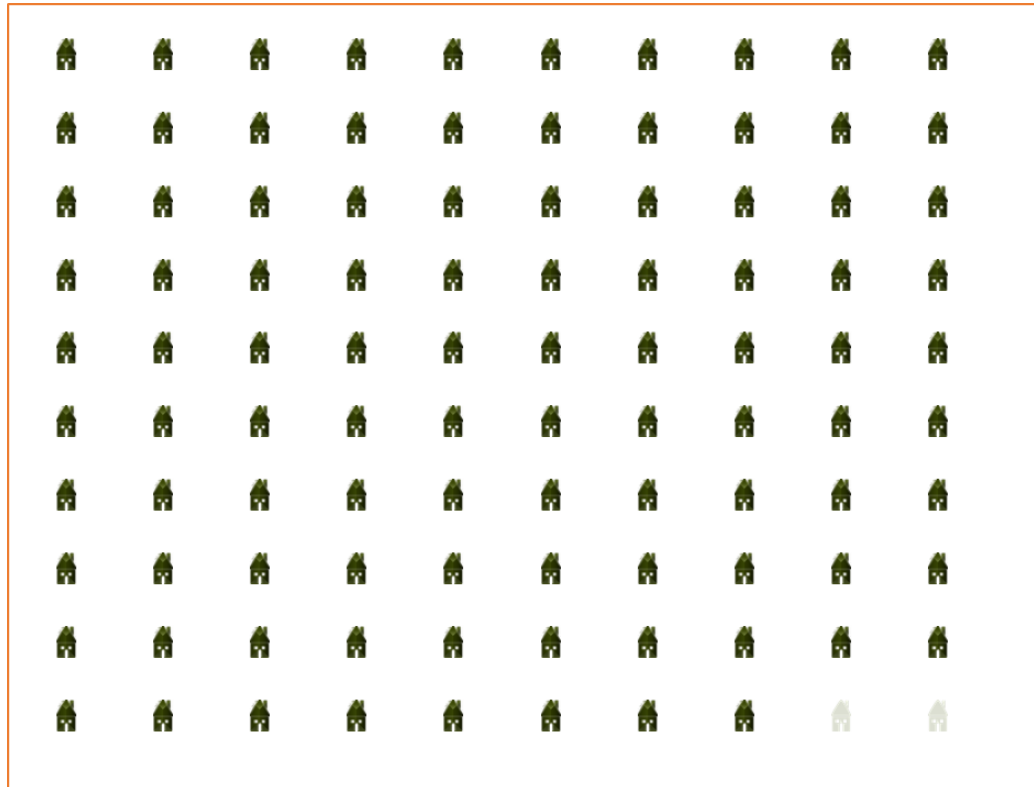
**\*8A Timely:** Developed an IFSP with transition steps and services at least 90 days and not more than 9 months prior to the toddler's 3rd birthday

**\*8B Timely:** Notified the State Educational Agency (SEA) and the Local Educational Agency (LEA) at least 90 days and not more 9 months prior to the toddler's 3rd birthday for toddlers potentially eligible for Part B preschool services

**\*8C Timely:** Conducted the transition conference at least 90 days and not more than 9 months prior to the toddler's 3rd birthday for toddlers potentially eligible for Part B preschool services

# Indicator 2: Settings

- Percent of infants and toddlers with IFSPs who primarily receive early intervention services in the home or community-based settings
- In FFY2020, **98.1%\*** of infants and toddlers received services in a home or community setting



\*Based on children with IFSPs as of 12/1/2020

\*State Target is 98.0%

# Indicator 3: Child Outcomes

---

- Percent of infants and toddlers with IFSPs who demonstrate improved outcomes during their time in Part C including:
  - 3A: Positive social-emotional skills (including social relationships);
  - 3B: Acquisition and use of knowledge and skills (including early language/communication);
  - 3C: Use of appropriate behaviors to meet their needs



# Indicator 3: Child Outcomes progress

---

Progress for child outcomes is summarized and reported to OSEP using two summary statements:

**Summary Statement 1 (SS1):** Of those children who entered the program below age expectations in each outcome, the percent who substantially increased their rate of growth by the time they turned 3 years or exited the program

$$\frac{c + d}{a + b + c + d}$$

**Summary Statement 2 (SS2):** The percent of children who were functioning within age expectations in each outcome by the time they turned three years or exited the program

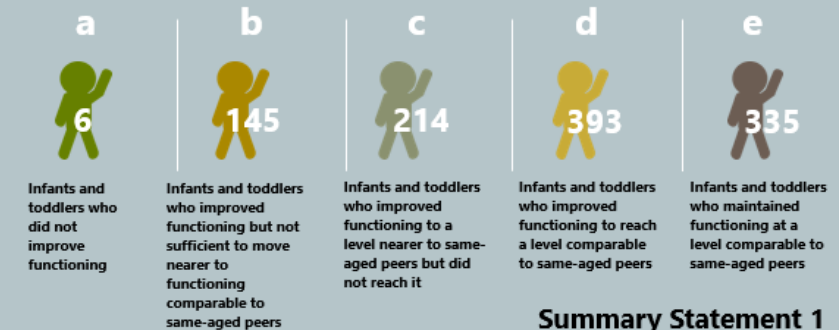
$$\frac{d + e}{a + b + c + d + e}$$

# Indicator 3A: Positive social-emotional skills

Progress Categories	Number of children	Percent
A. Percent of infants and toddlers who did not improve functioning	6	0.5%
B. Percent of infants and toddlers who improve functioning but not sufficient to move nearer to functioning comparable to same-aged peers	145	13.3%
C. Percent of infants and toddlers who improved functioning to a level nearer to same-aged peers but did not reach it	214	19.6%
D. Percent of infants and toddlers who improved functioning to reach a level comparable to same-aged peers	393	36.0%
E. Percent of infants and toddlers who maintained functioning at a level comparable to same-aged peers	335	30.6%
<b>Total</b>	<b>1,093</b>	<b>100.0%</b>

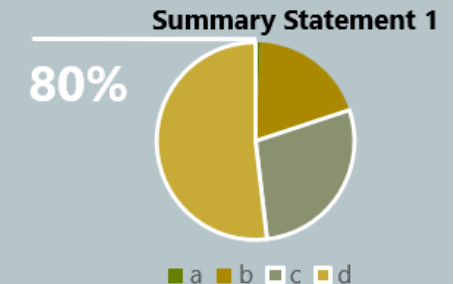
## Child Outcomes: Positive Social-Emotional Skills

This indicator measures infants and toddlers' positive social-emotional skills (including social relationships). It is calculated as two summary statements that examine the percentage of infants and toddlers who increase their rate of growth in positive social-emotional functioning (Summary Statement 1) and the percentage of infants and toddlers who function at a level comparable to their same-aged peers (Summary Statement 2).

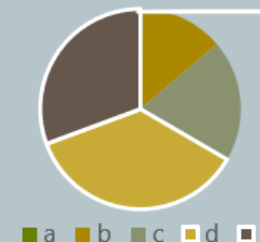


**Summary Statement 1**

Of those infants and toddlers who entered early intervention below age expectations in positive social-emotional skills, the percent who substantially increased their rate of growth by the time they turned 3 years of age or exited the program.  $(c+d)/(a+b+c+d)$



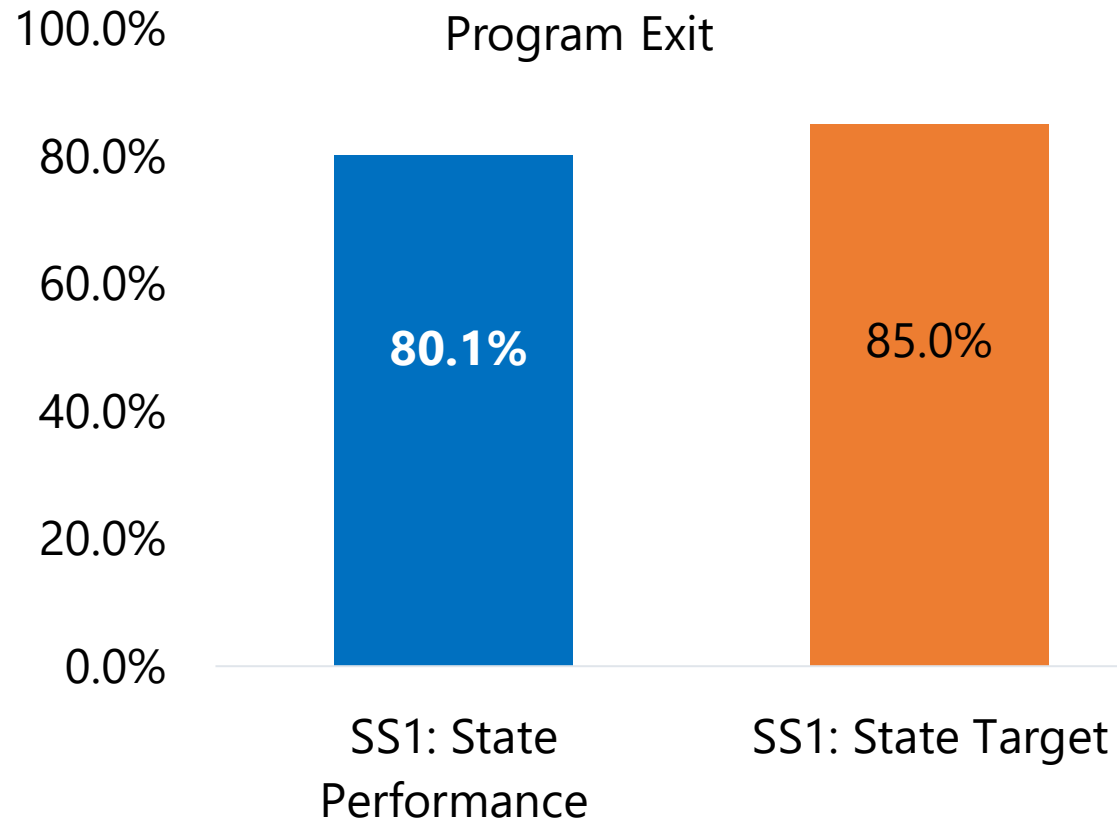
**Summary Statement 2**



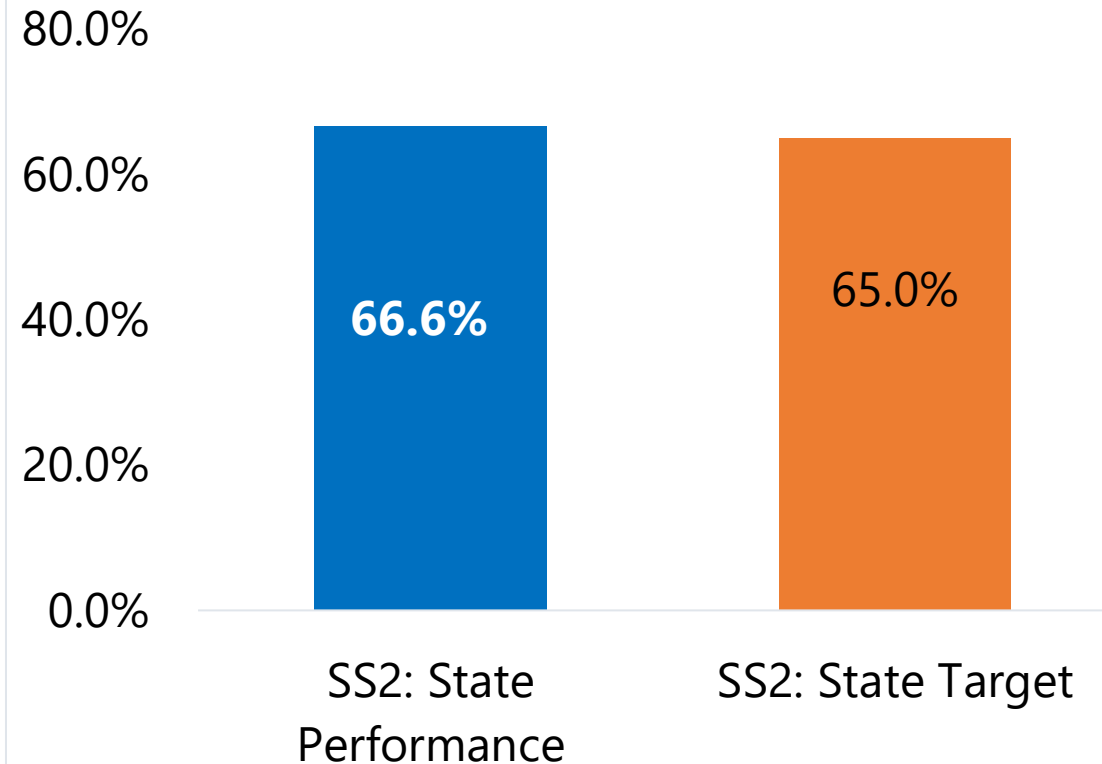
The percent of infants and toddlers who were functioning within age expectations in positive social-emotional skills by the time they turned 3 years of age or exited the program.  $(d+e)/(a+b+c+d+e)$

# Indicator 3A: Positive social-emotional skills

Percent of Children with Substantial Increase in Rate of Growth in Positive Social- Emotional Skills by Age 3 or Program Exit

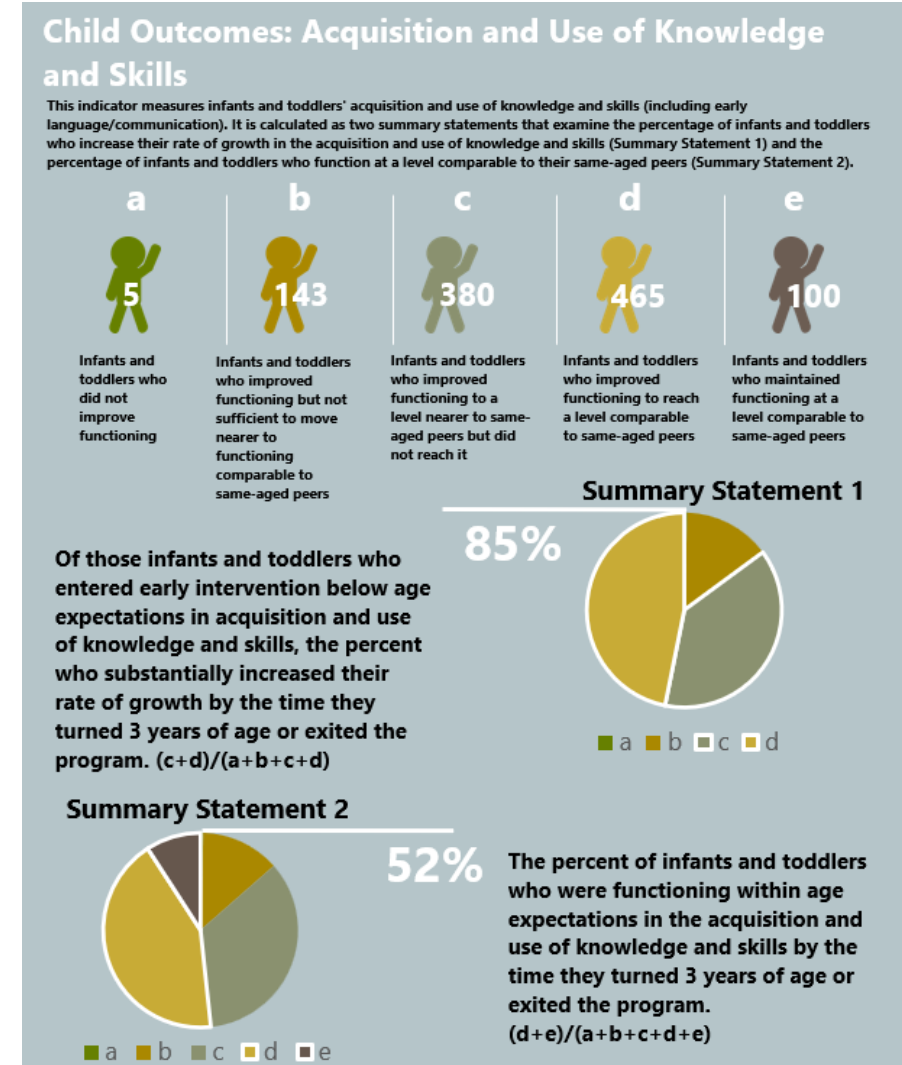


Percent of Children Functioning within Age Expectation in Positive Social- Emotional Skills by Age 3 or Program Exit

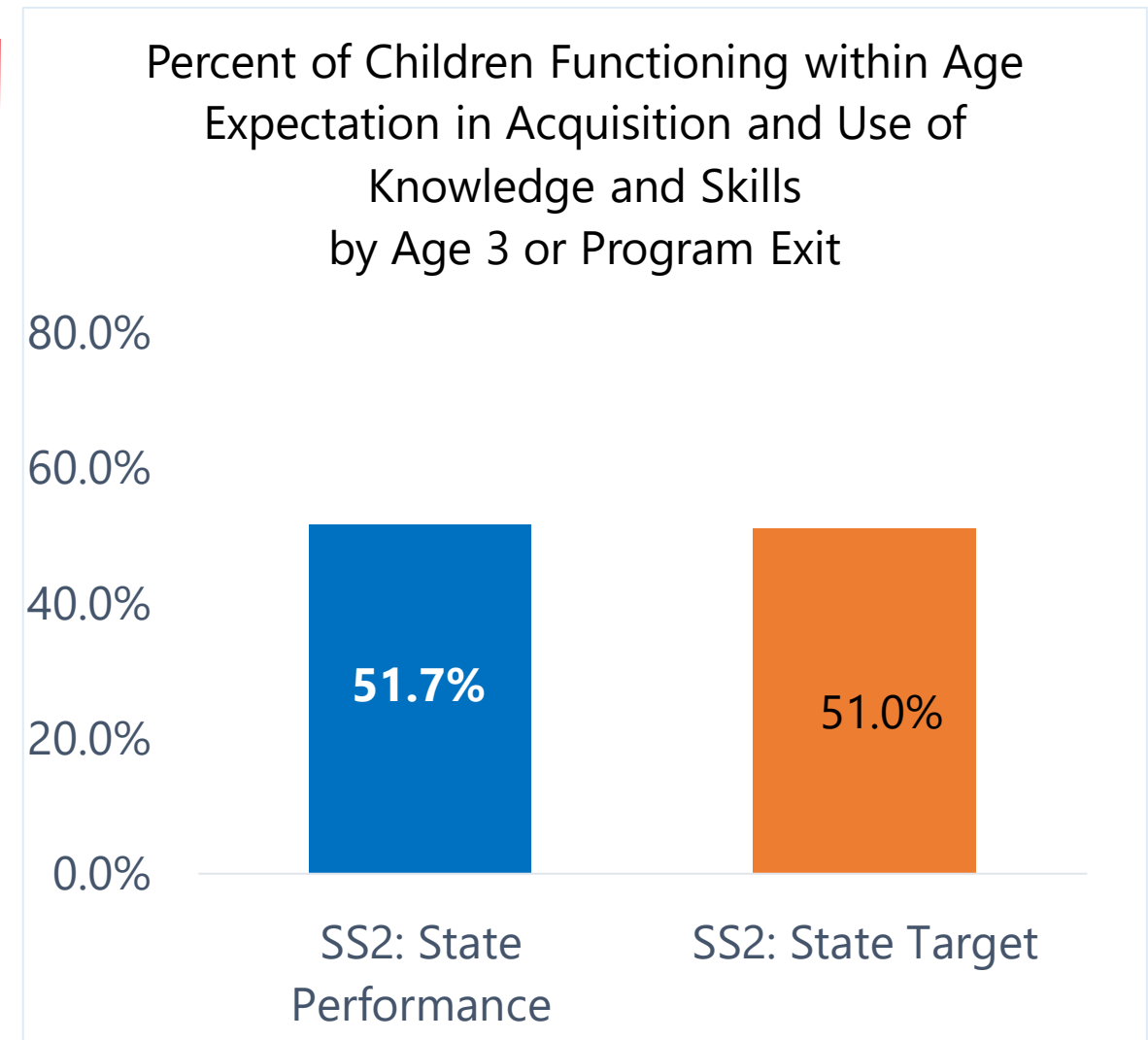
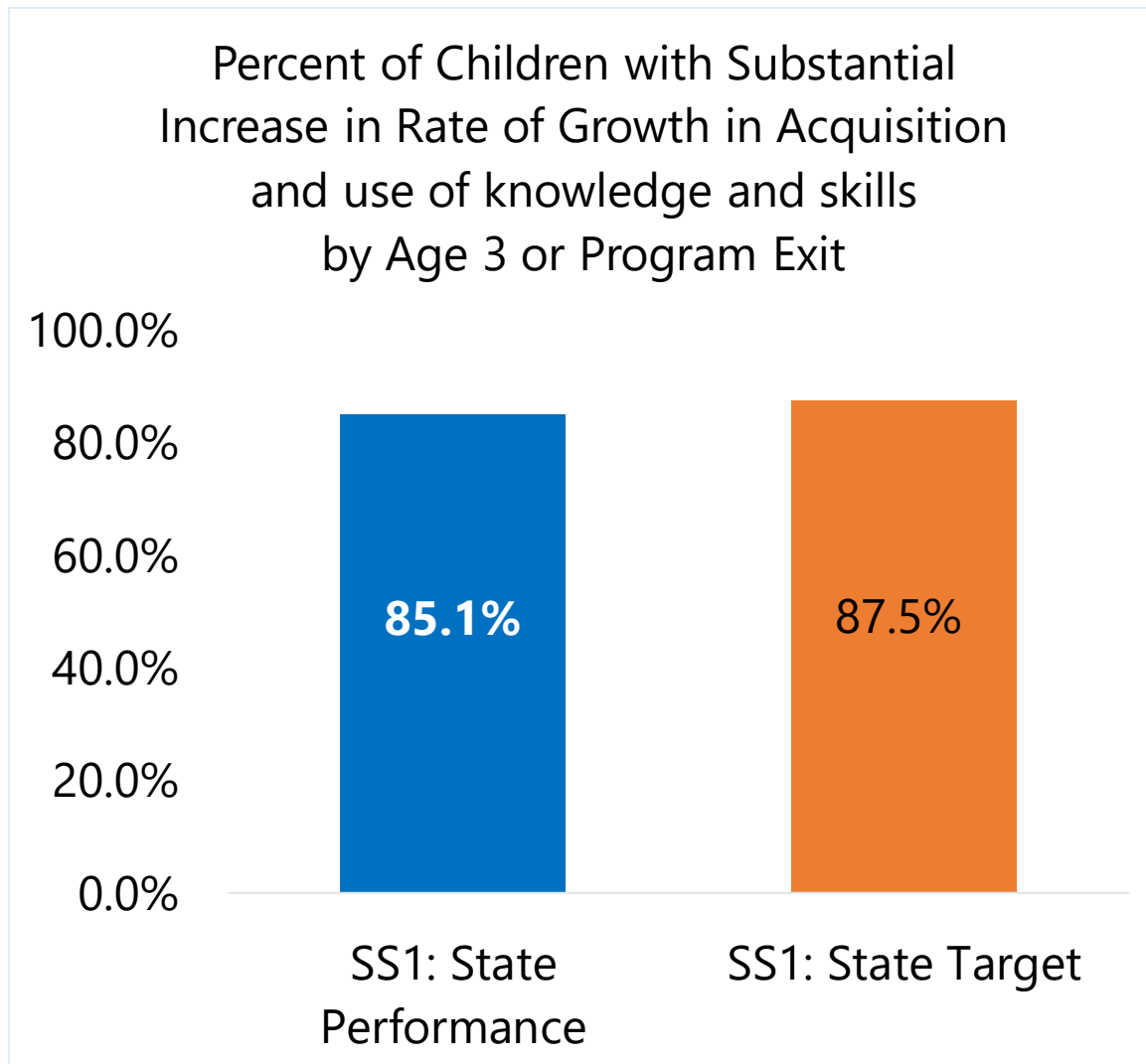


# Indicator 3B: Acquisition & use of knowledge & skills

Progress Categories	Number of children	Percent
A. Percent of infants and toddlers who did not improve functioning	5	0.5%
B. Percent of infants and toddlers who improve functioning but not sufficient to move nearer to functioning comparable to same-aged peers	143	13.1%
C. Percent of infants and toddlers who improved functioning to a level nearer to same-aged peers but did not reach it	380	34.8%
D. Percent of infants and toddlers who improved functioning to reach a level comparable to same-aged peers	465	42.5%
E. Percent of infants and toddlers who maintained functioning at a level comparable to same-aged peers	100	9.1%
<b>Total</b>	<b>1,093</b>	<b>100.0%</b>

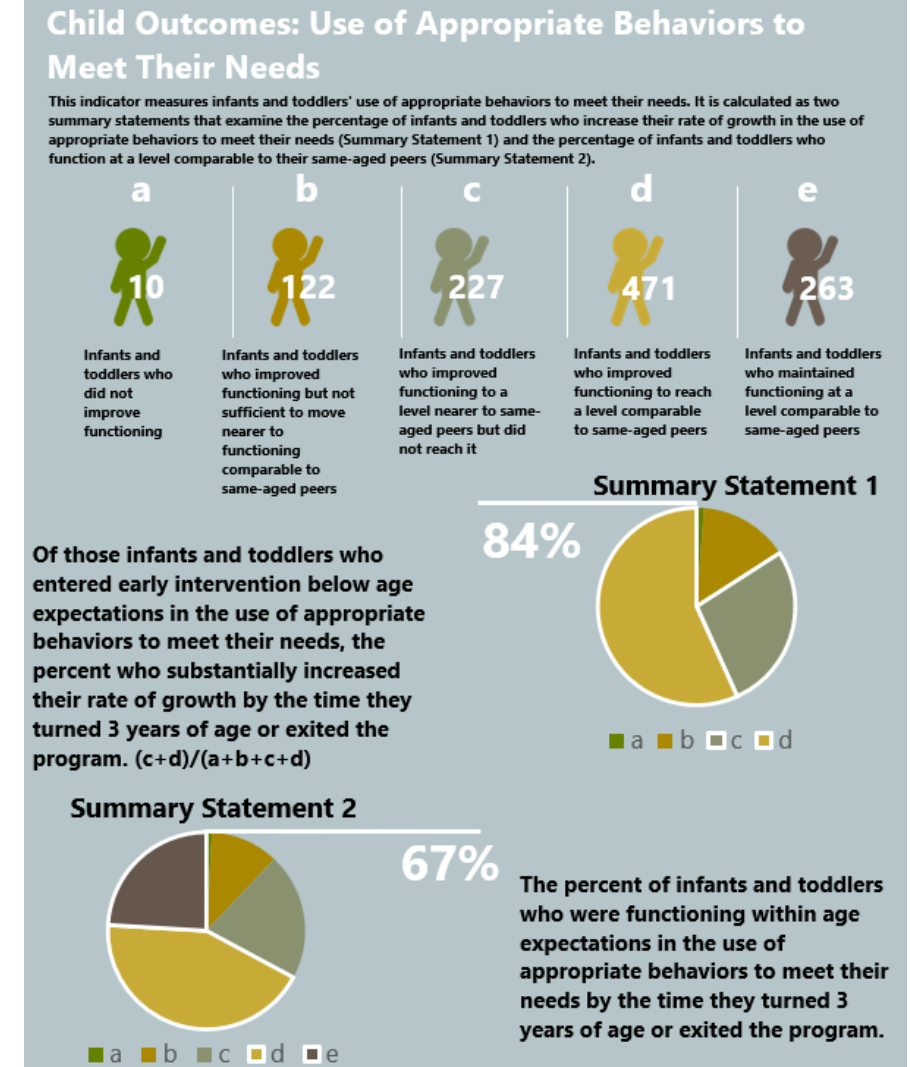


# Indicator 3B: Acquisition & use of knowledge & skills



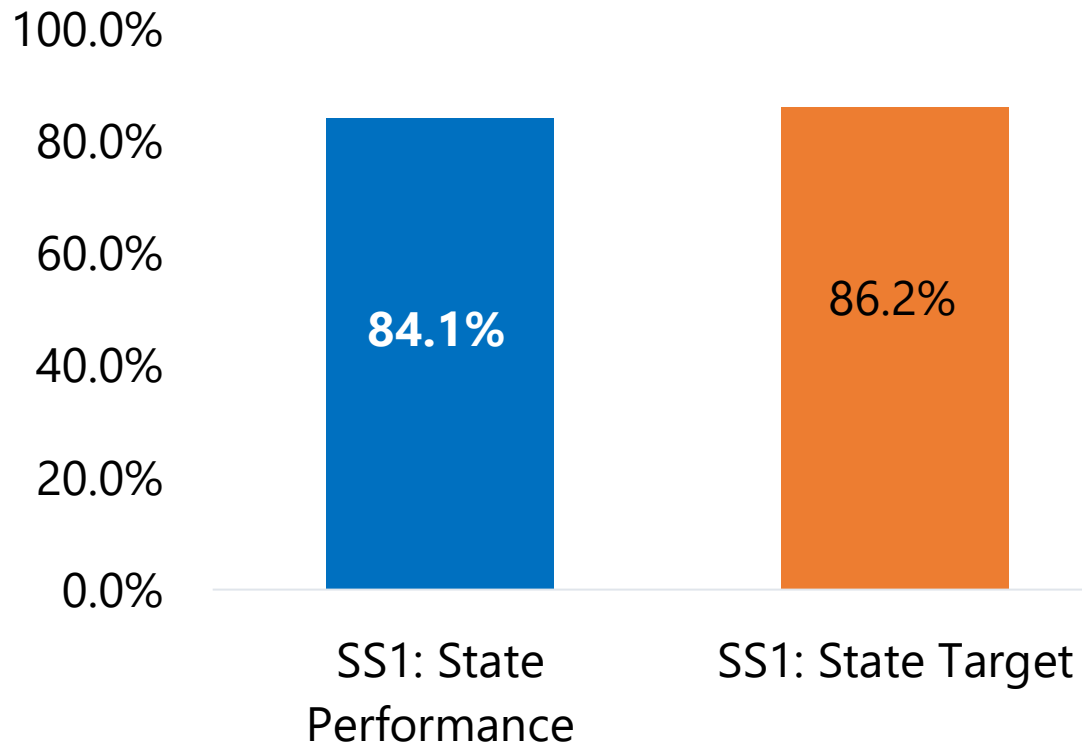
# Indicator 3C: Use of appropriate behaviors to meet their needs

Progress Categories	Number of children	Percent
A. Percent of infants and toddlers who did not improve functioning	10	0.9%
B. Percent of infants and toddlers who improve functioning but not sufficient to move nearer to functioning comparable to same-aged peers	122	11.2%
C. Percent of infants and toddlers who improved functioning to a level nearer to same-aged peers but did not reach it	227	20.8%
D. Percent of infants and toddlers who improved functioning to reach a level comparable to same-aged peers	471	43.1%
E. Percent of infants and toddlers who maintained functioning at a level comparable to same-aged peers	263	24.0%
<b>Total</b>	<b>1,093</b>	<b>100.0%</b>

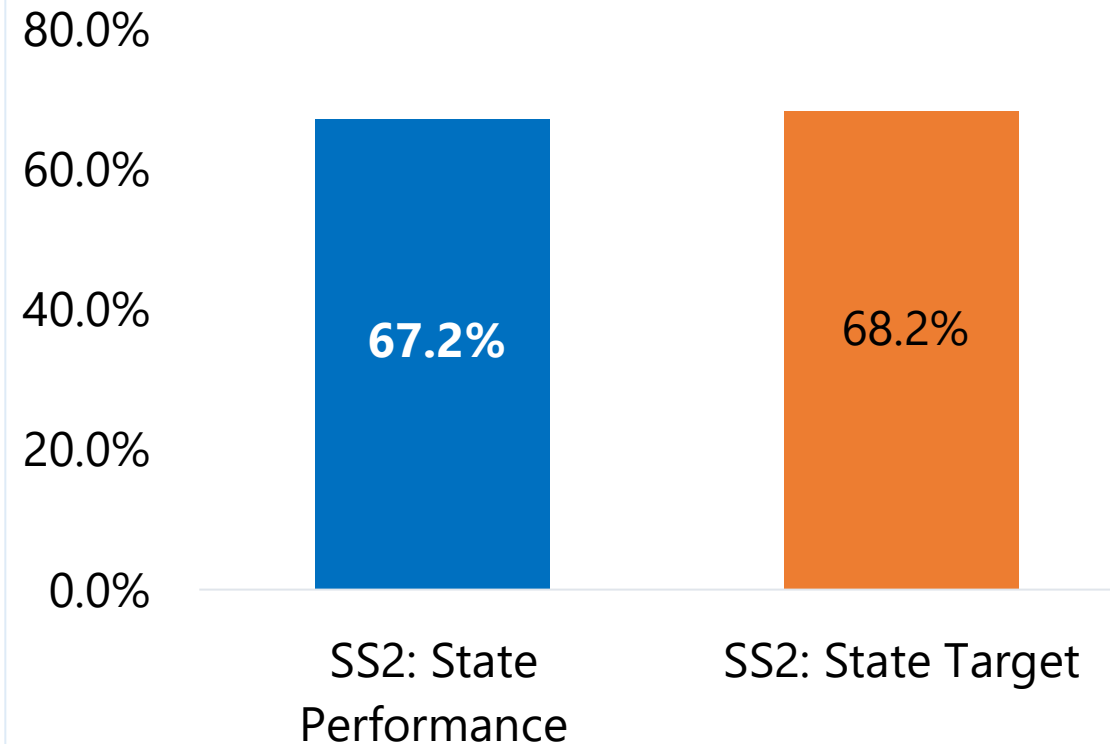


# Indicator 3C: Use of appropriate behaviors to meet their needs

Percent of Children with Substantial Increase in Rate of Growth in Use of Appropriate Behaviors to Meet their Needs by Age 3 or Program Exit



Percent of Children Functioning within Age Expectation in Use of Appropriate Behaviors to Meet their Needs by Age 3 or Program Exit



# Indicator 3: Child Outcomes

---

## **Slippage Explanation 3A1, B1, C1 and C2 :**

Impact of COVID-19 pandemic:

- Relationship development challenges in a virtual a space
- Economic and psychological factors that affected individual and family functioning
- Limited interaction opportunities for children to practice social skills with peers
- Telehealth technology challenges especially for families in rural Georgia

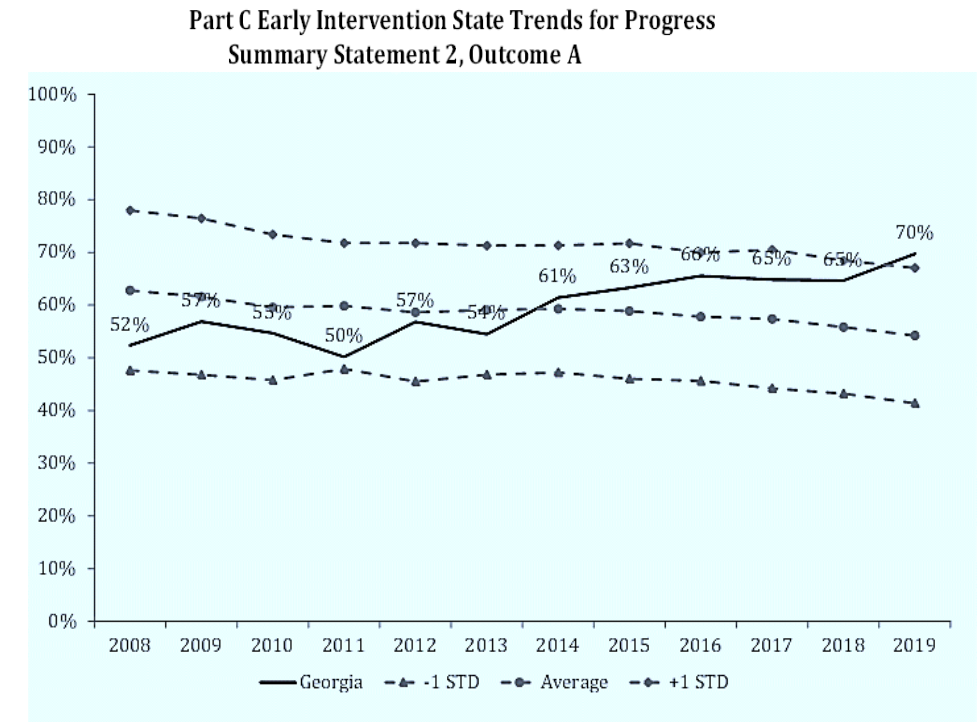
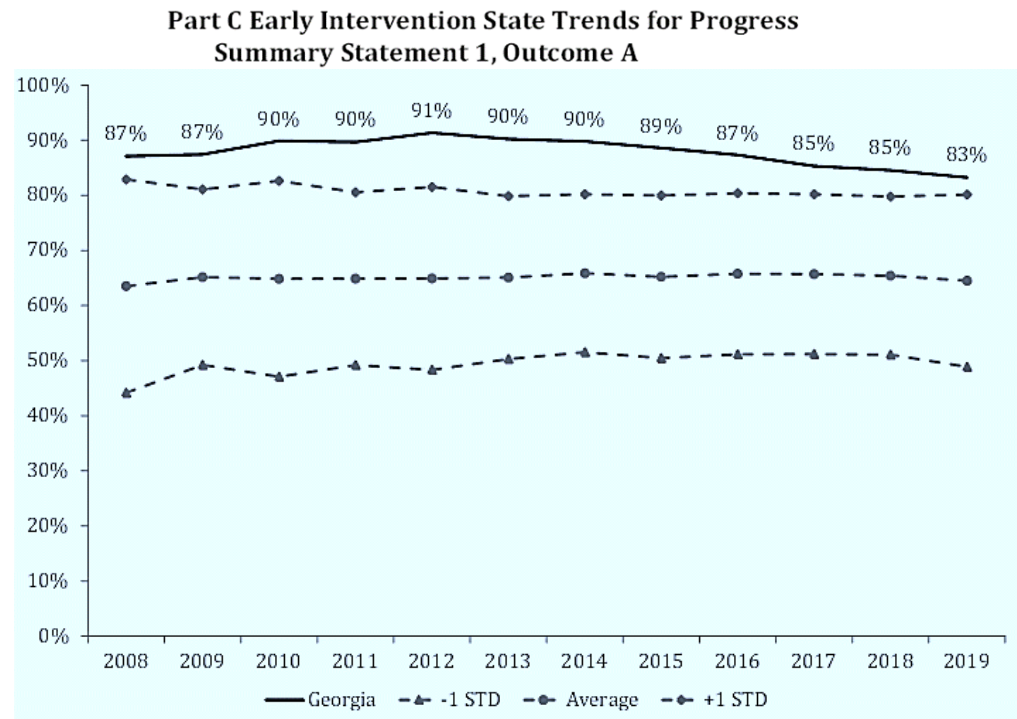
Reflection of statewide efforts on improving consistency in the COS process:

- Provider requirement to complete ECTA's COS modules online training
  - ✓ *Practitioners consistently and accurately implement the COS process*
- Quarterly review of COS data records by the local program EICs to ensure:
  - ✓ Records contain an Entry COS rating and exit rating (if child exits after at least 6 months in BCW); Evidence to support ratings; Team participation



# Georgia Child Outcomes trends vs national average

- Recent national COS profile data trends:
  - ✓ Georgia's performance has been above the national average for all the 3 child outcomes for summary statement 1
  - ✓ For summary statement 2, Georgia performance was above the national average from 2014 to 2019



# Indicator 4: Family Outcomes

---

- Percent of families participating in Part C who report that early intervention services have helped the family:
  - 4A: Know their rights;
  - 4B: Effectively communicate their children's needs;
  - 4C: Help their children develop and learn

# Indicator 4: Family Outcomes

A. Know their rights



**91%**

4A

\*State Target 91.2%

B. Effectively communicate their children's needs



**89%**

4B

\*State Target 90.5%

C. Help their children develop and learn



**86%**

4C

\*State Target 86.5%

# Indicator 4: Family Outcomes

---

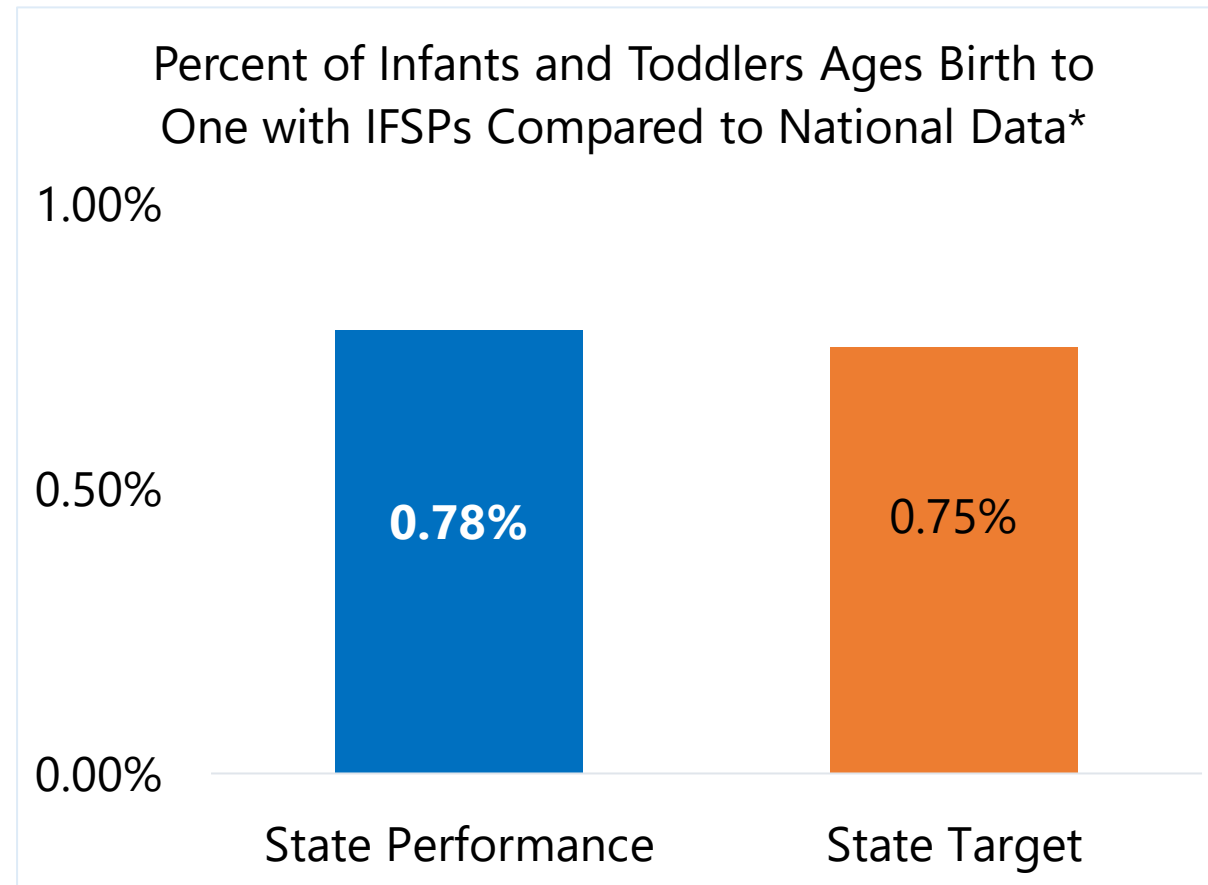
## **Slippage Explanation 4 B & C:**

Impact of COVID-19 pandemic:

- Relationship development challenges in a virtual space
- Economic and psychological factors that impacted individual and family functioning
- Telehealth technology challenges especially for families in rural Georgia

# Indicator 5 : Child Find Birth to 1

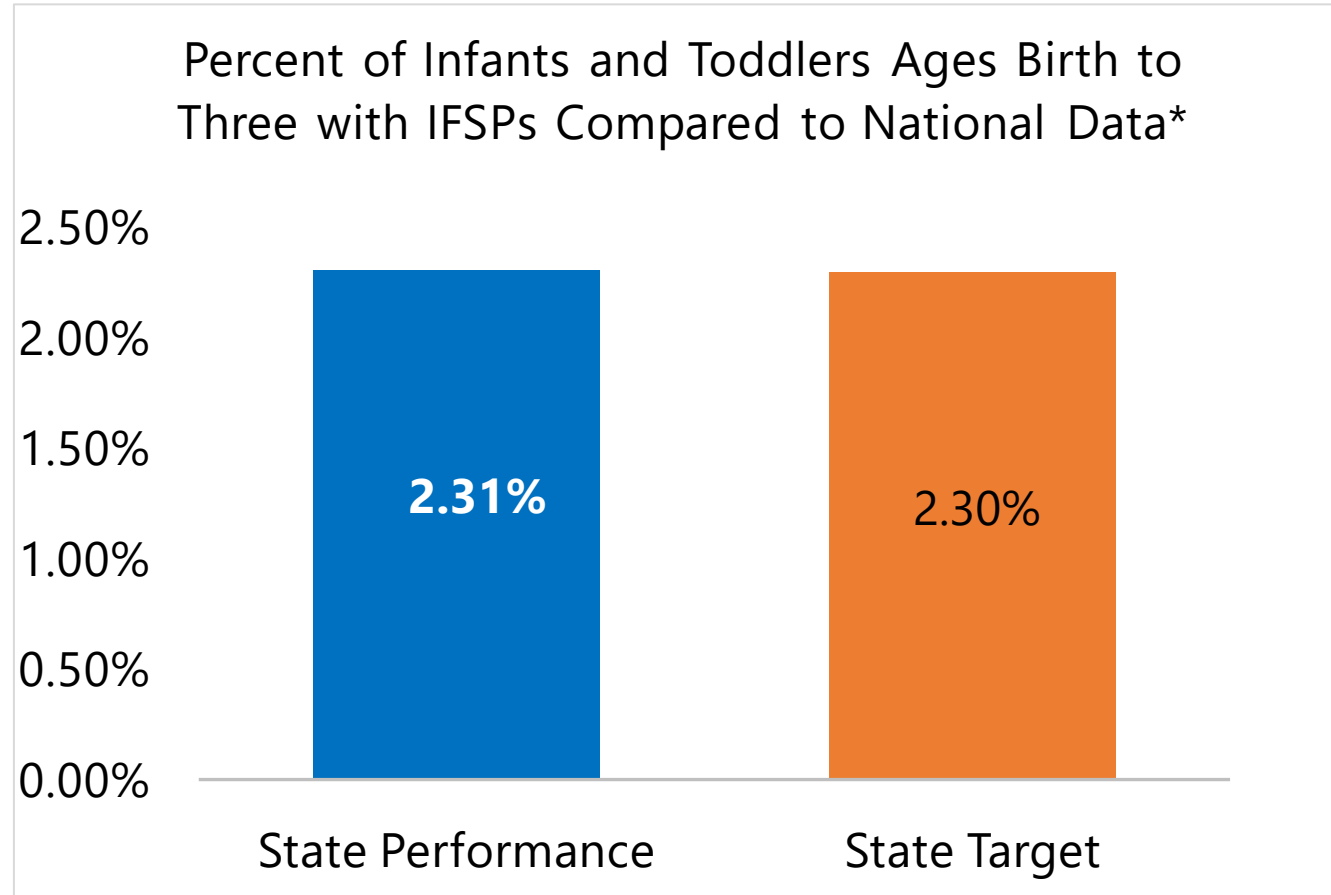
- Percent of infants and toddlers ages birth to 1 year with IFSPs compared to the National data



\*Based on children with IFSPs as of 12/1/2020

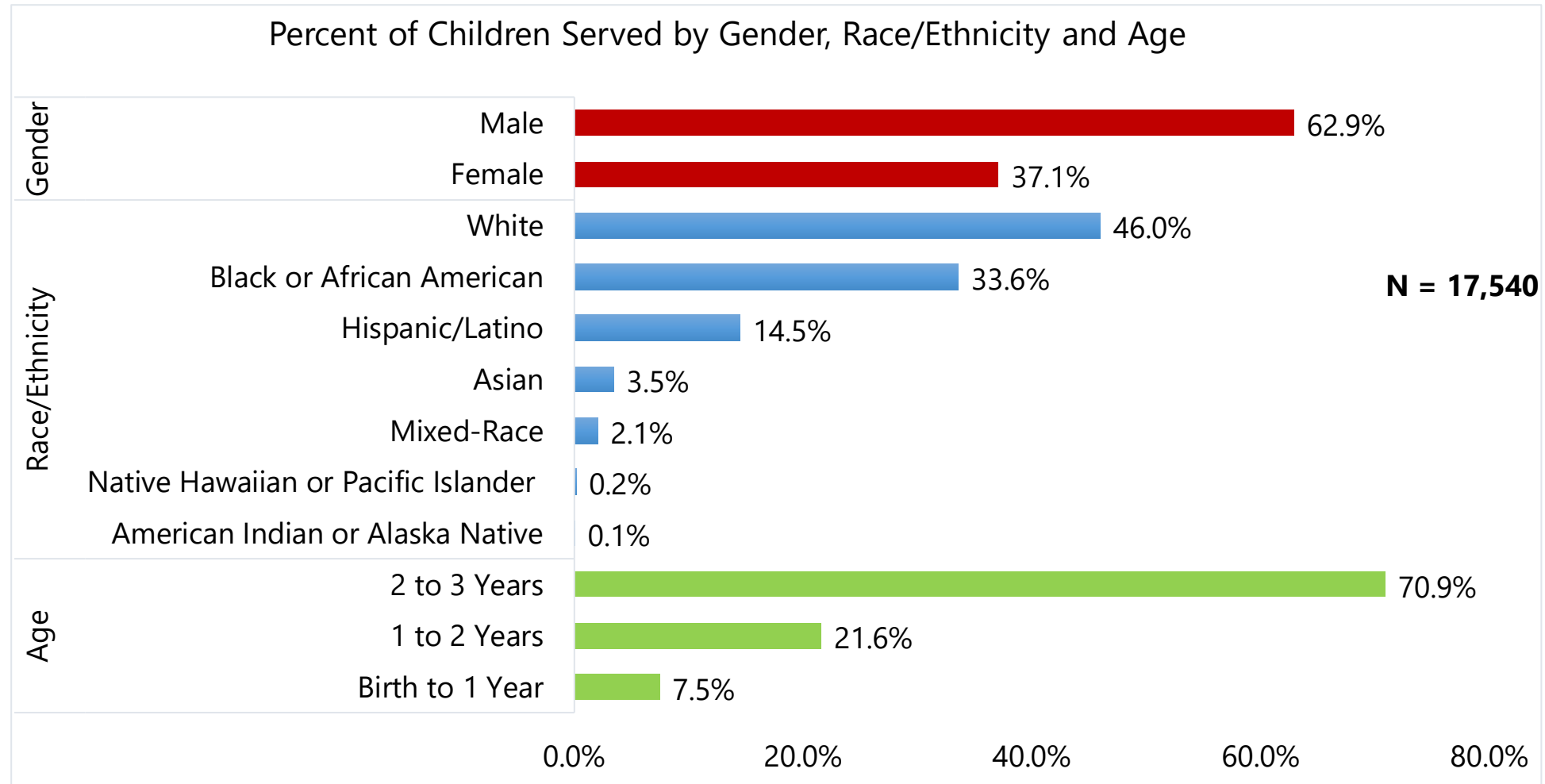
# Indicator 6 : Child Find Birth to 3

- Percent of infants and toddlers ages birth to 3 years with IFSPs compared to the National data



\*Based on children with IFSPs as of 12/1/2020

# Indicator 5 & 6: Children Served, Birth to 3



In Fiscal year 2020, a total of 17,540 children ages birth through 3 years were served by the Georgia Part C Babies Can't Wait Program

*Thank You!!!*