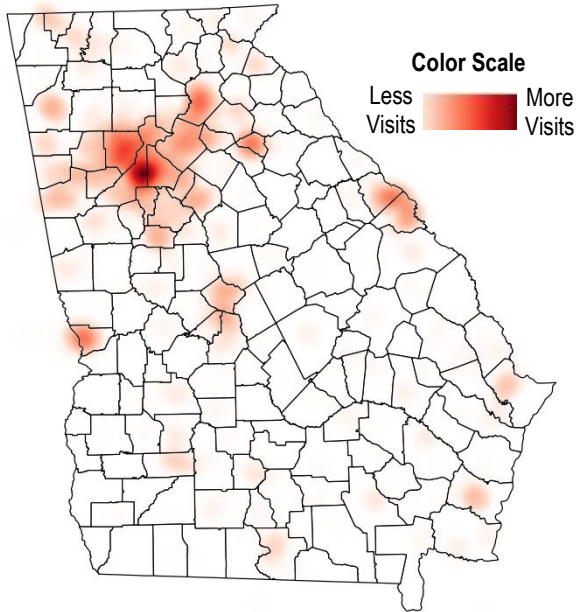


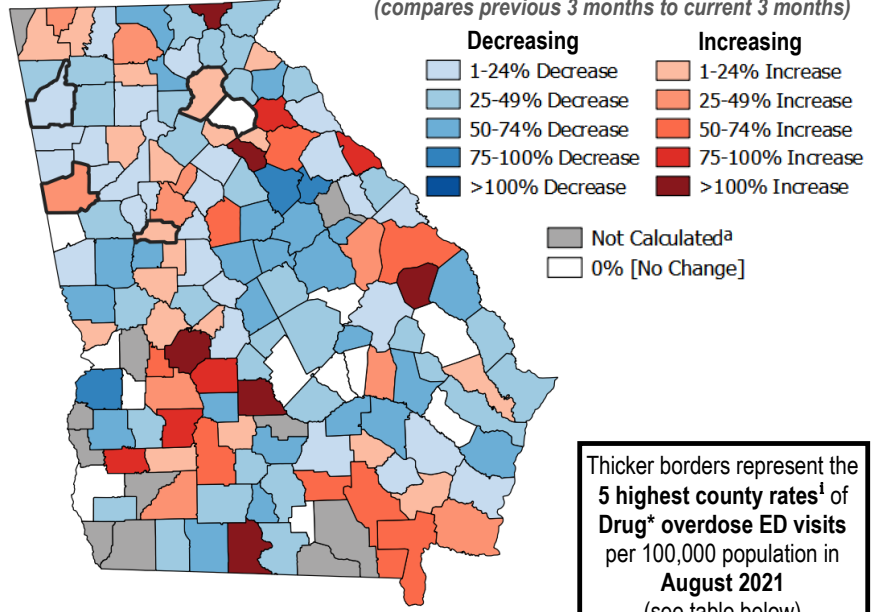
# Syndromic Surveillance Drug Overdose Emergency Department Visits: Georgia, August 2021

**What is Syndromic Surveillance (SS)?** SS is used as an early detection method for potential clusters or outbreaks, by tracking suspected drug overdose-involved emergency department (ED) visits based on the patient's chief complaint upon admission and/or discharge diagnosis. Participating Georgia hospitals and urgent care facilities share these SS data within the State Electronic Notifiable Disease Surveillance System (SendSS).

**Drug\* Overdose ED Visits by Patient Zip Code<sup>^</sup>, Georgia, August 2021**



**Percent Change<sup>a</sup> of Drug\* Overdose ED Visits, Georgia, Mar 2021 - May 2021 to Jun 2021 - Aug 2021**  
(compares previous 3 months to current 3 months)



Thicker borders represent the **5 highest county rates<sup>1</sup> of Drug\* overdose ED visits per 100,000 population in August 2021** (see table below)

**Top 5 Counties<sup>^</sup> with 15 or More Drug\* Overdose ED Visits During August 2021**

County	Monthly Rate <sup>1</sup> per 100,000 Population	
	August 2021	Sep 2020 - Aug 2021
CARROLL	39.3	
JACKSON	32.9	
SPALDING	31.7	
HALL	30.1	
FLOYD	26.3	

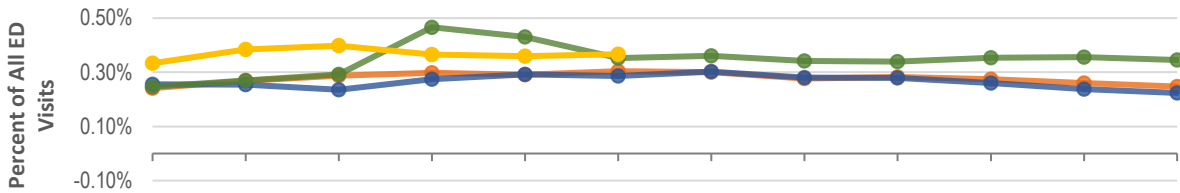
**Statewide, 1,250 ED visits for Drug\* overdoses occurred in August 2021, compared to 1,261 in August 2020.**

Data source: Suspected drug overdose ED/Urgent Care visits by chief complaint upon admission and/or discharge diagnosis reported to DPH Syndromic Surveillance. See data limitations [here](#).  
<sup>\*</sup>Drugs may include any over the counter, prescription, or illicit drug.  
<sup>^</sup>Zip code and county are based on patient residence.  
<sup>1</sup>Rate indicates visits per 100,000 persons using 2019 Census data as the denominator. Excluded rates for counties with <15 visits.  
<sup>a</sup>Percent change data by county excludes counties with less than 3 visits.  
<sup>‡</sup>Drug Specific Categories are not mutually exclusive and include illicit and prescription drugs. Specific drugs identified using the chief complaint and/or discharge diagnosis fields and are not meant to be comprehensive.  
 Note: All data excludes patients ≤14 years of age. Counts represent the number of ED visits instead of the number of patients, therefore, patients with repeat visits may have been counted more than once.  
 Note: SS data is not the same as emergency department discharge data; drug overdose SS data is limited and based on accuracy of chief complaint and/or discharge diagnosis and what is reported to DPH SS. Data is subject to change due to the current number of participating facilities and/or improvements to data quality. Data shown on this report may not depict the true burden of drug overdose in Georgia.

# Syndromic Surveillance Drug Overdose Emergency Department Visits: Georgia, August 2021

Note: Proportion of ED visits may be affected by changes in the number of ED visits during COVID-19

### Drug\* Overdose ED Visits by Month, Georgia, 2018-2021



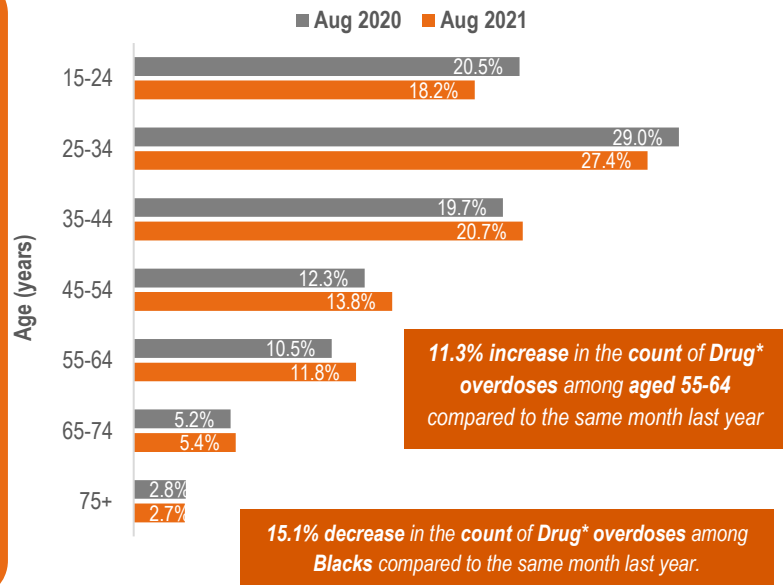
	Jan	Feb	Mar	Apr	May	Jun	Jul	Aug	Sep	Oct	Nov	Dec	Average
2018 % of Total ED Visits	0.24%	0.27%	0.29%	0.30%	0.29%	0.30%	0.30%	0.28%	0.28%	0.27%	0.26%	0.25%	0.28%
2019 % of Total ED Visits	0.26%	0.25%	0.24%	0.27%	0.29%	0.29%	0.30%	0.28%	0.28%	0.26%	0.24%	0.22%	0.27%
2018 to 2019 % Change	8.33%	-7.41%	-17.24%	-10.00%	0.00%	-3.33%	0.00%	0.00%	0.00%	-3.70%	-7.69%	-12.00%	-4.42%
2020 % of Total ED Visits	0.25%	0.27%	0.29%	0.47%	0.43%	0.35%	0.36%	0.34%	0.34%	0.35%	0.36%	0.35%	0.35%
2019 to 2020 % Change	-3.85%	8.00%	20.83%	74.07%	48.28%	20.69%	20.00%	21.43%	21.43%	34.62%	50.00%	59.09%	31.22%
2021 % of Total ED Visits	0.33%	0.38%	0.40%	0.37%	0.36%	0.37%	0.34%	0.26%					0.35%
2020 to 2021 % Change	32.00%	40.74%	37.93%	-21.28%	-16.28%	5.71%	-5.56%	-23.53%					6.22%

### Drug\* Overdose ED Visits by Sex, Race, and Age Group, Georgia, Aug 2020 and Aug 2021

Rate <sup>i</sup> of Drug* Overdose ED Visits	Aug 2020 Rate <sup>i</sup> (per 100,000 Population)	Aug 2021 Rate <sup>i</sup> (per 100,000 Population)
<b>Overall</b>	14.8	14.6
<b>Sex<sup>o</sup></b>		
Male	15.3	16.3
Female	14.2	13.0
<b>Race<sup>o</sup></b>		
White	15.5	15.5
Black	10.2	8.6
Other	16.5	21.2
<b>Age Group<sup>o</sup> (years)</b>		
15-24	17.9	15.7
25-34	24.5	22.9
35-44	18.0	18.8
45-54	11.1	12.3
55-64	10.2	11.3
65-74	7.0	7.3
75+	5.9	5.8

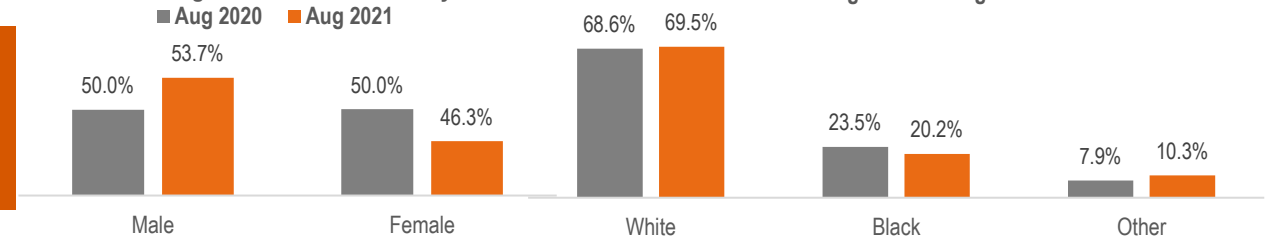
Drug\* overdose ED visits in August 2021 were predominantly: Male (53.7%), White (69.5%), and between 25-34 years of age (27.4%).

### Percent of All Drug\* Overdose ED Visits by Age Group<sup>o</sup>



### Percent of All Drug\* Overdose ED Visits by Sex<sup>o</sup>

8.4% decrease in the count of Drug\* overdoses among Females compared to the same month last



Data source: Suspected drug overdose ED/Urgent Care visits by chief complaint upon admission and/or discharge diagnosis reported to DPH Syndromic Surveillance. See data limitations [here](#).

\*Drugs may include any over the counter, prescription, or illicit drug.

<sup>o</sup>Zip code and county are based on patient residence.

<sup>i</sup>Rate indicates visits per 100,000 persons using 2020 Census data as the denominator. Excluded rates for counties with <15 visits.

<sup>o</sup>Percent change data by county excludes counties with less than 3 visits.

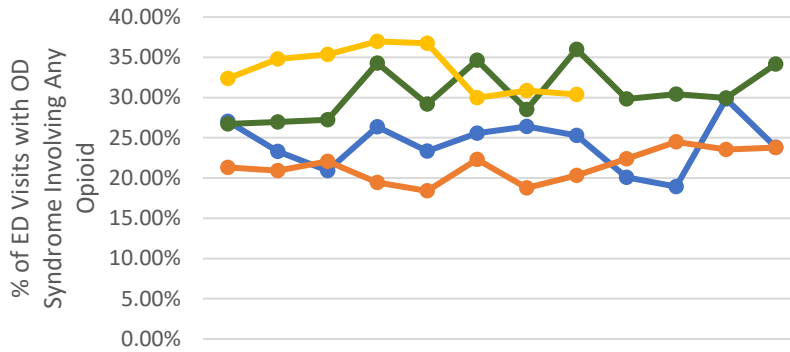
<sup>o</sup>Drug Specific Categories are not mutually exclusive and include illicit and prescription drugs. Specific drugs identified using the chief complaint and/or discharge diagnosis fields and are not meant to be comprehensive.

Note: All data excludes patients ≤14 years of age. Counts represent the number of ED visits instead of the number of patients, therefore, patients with repeat visits may have been counted more than once.

Note: SS data is not the same as emergency department discharge data; drug overdose SS data is limited and based on accuracy of chief complaint and/or discharge diagnosis and what is reported to DPH SS. Data is subject to change due to the current number of participating facilities and/or improvements to data quality. Data shown on this report may not depict the true burden of drug overdose in Georgia.

# Syndromic Surveillance Drug Overdose Emergency Department Visits: Georgia, August 2021

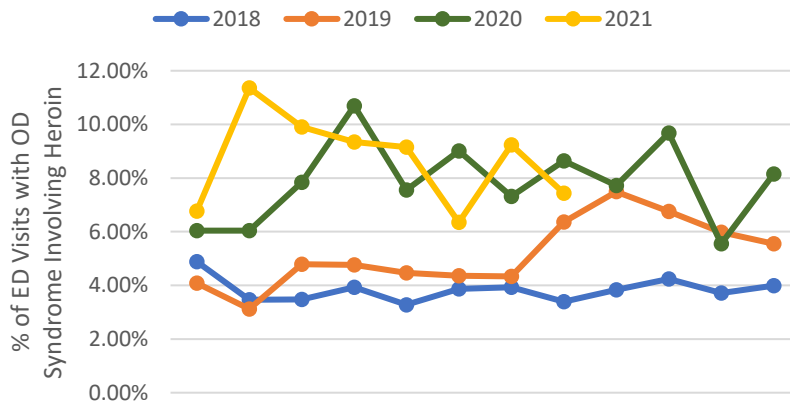
## Opioid-Involved<sup>‡</sup> OD ED Visits by Month, Georgia, 2018-2021



### % of ED Visits with OD Syndrome Involving Any Opioid

	Jan	Feb	Mar	Apr	May	Jun	Jul	Aug	Sep	Oct	Nov	Dec	Average
2018	27.04%	23.31%	20.91%	26.36%	23.36%	25.56%	26.40%	25.30%	20.10%	18.94%	29.83%	23.83%	24.24%
2019	21.32%	20.91%	22.09%	19.47%	18.40%	22.30%	18.77%	20.33%	22.39%	24.50%	23.53%	23.79%	21.48%
% Change from 2018 to 2019	-21%	-10%	6%	-26%	-21%	-13%	-29%	-20%	11%	29%	-21%	0%	-10%
2020	26.72%	26.98%	27.22%	34.29%	29.20%	34.63%	28.53%	36.00%	29.84%	30.44%	29.95%	34.16%	30.66%
% Change from 2019 to 2020	25%	29%	23%	76%	59%	55%	52%	77%	33%	24%	27%	44%	44%
2021	32.36%	34.79%	35.34%	36.97%	36.72%	29.97%	30.86%	30.40%					33.43%
% Change from 2020 to 2021	21%	29%	30%	8%	26%	-13%	8%	-16%					12%

## Heroin-Involved<sup>‡</sup> OD ED Visits by Month, Georgia, 2018-2021



### % of ED Visits with OD Syndrome Involving Heroin

	Jan	Feb	Mar	Apr	May	Jun	Jul	Aug	Sep	Oct	Nov	Dec	Average
2018	4.89%	3.47%	3.47%	3.93%	3.28%	3.87%	3.93%	3.40%	3.83%	4.24%	3.72%	3.99%	3.83%
2019	4.08%	3.12%	4.79%	4.76%	4.46%	4.36%	4.33%	6.36%	7.49%	6.76%	5.98%	5.55%	5.17%
% Change from 2018 to 2019	-16%	-10%	38%	21%	36%	12%	10%	87%	95%	60%	61%	39%	36%
2020	6.04%	6.04%	7.84%	10.69%	7.56%	9.01%	7.31%	8.64%	7.72%	9.68%	5.55%	8.15%	7.85%
% Change from 2019 to 2020	48%	94%	64%	125%	69%	107%	69%	36%	3%	43%	-7%	47%	58%
2021	6.76%	11.36%	9.90%	9.35%	9.15%	6.35%	9.23%	7.44%					8.69%
% Change from 2020 to 2021	12%	88%	26%	-13%	21%	-30%	26%	-14%					15%

#### Link(s) of interest:

[Georgia Department of Public Health, Updated Suspect Drug Overdose Increases in Georgia Amid COVID-19 – April 2021](#)

[Georgia Department of Public Health, 2021 Quarterly Drug Overdose Surveillance Report, Quarter 1](#)

Data source: Suspected drug overdose ED/Urgent Care visits by chief complaint upon admission and/or discharge diagnosis reported to DPH Syndromic Surveillance. See data limitations [here](#).

\*Drugs may include any over the counter, prescription, or illicit drug.

<sup>‡</sup>Zip code and county are based on patient residence.

<sup>†</sup>Rate indicates visits per 100,000 persons using 2020 Census data as the denominator. Excluded rates for counties with <15 visits.

<sup>‡</sup>Percent change data by county excludes counties with less than 3 visits.

<sup>‡</sup>Drug Specific Categories are not mutually exclusive and include illicit and prescription drugs. Specific drugs identified using the chief complaint and/or discharge diagnosis fields and are not meant to be comprehensive.

Note: All data excludes patients ≤14 years of age. Counts represent the number of ED visits instead of the number of patients, therefore, patients with repeat visits may have been counted more than once.

Note: SS data is not the same as emergency department discharge data; drug overdose SS data is limited and based on accuracy of chief complaint and/or discharge diagnosis and what is reported to DPH SS. Data is subject to change due to the current number of participating facilities and/or improvements to data quality. Data shown on this report may not depict the true burden of drug overdose in Georgia.