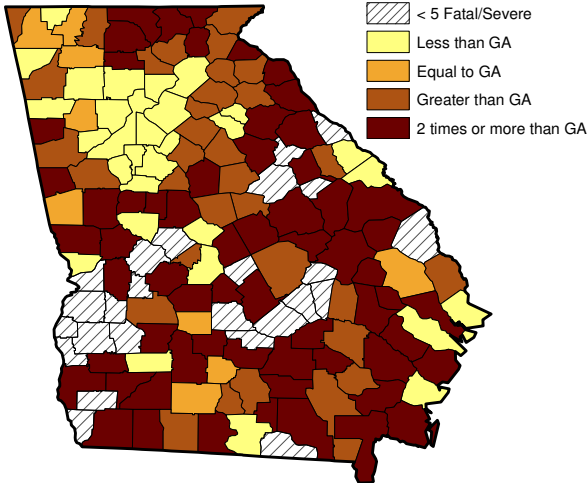


Pickup Truck Crashes in Georgia 2008



OVERVIEW

Pickup Truck Fatality and/or Severe Injury County Crash: 2006-2008



GA pickup truck fatal-severe injury crash rate is 8.6 (20.0 in rural counties) out of every 1,000 pickup truck crashes.

- There were **76,034** pickup truck crashes—carrying **106,566** people.
- Of these **14%** were either injured (**14,289**) or killed (**249**) — which is more people than the individual population sizes of 59 Georgia counties.
- Although pickup trucks accounted for **14%** of motor vehicle *crashes*, they tallied **18%** of motor vehicle *fatalities*.

While only 18% of Georgians live in rural areas, 44% of the pickup truck fatalities occurred on rural roadways.

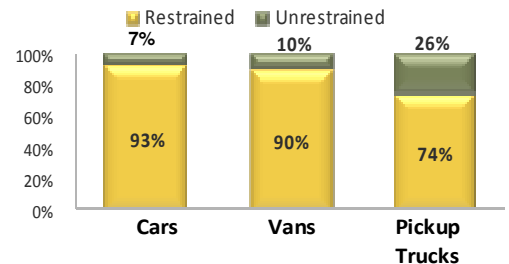
UNRESTRAINED PICKUP TRUCK OCCUPANTS

Unrestrained Pickup Truck Occupants are:

- **44 times** more likely to be killed than those restrained.
- **4 times** more likely to be admitted to the Hospital (\$65,000 avg. charge) instead of treated and released from the Emergency Room (\$2,800 avg. charge).

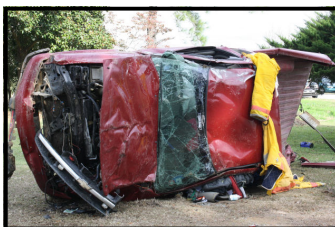
26% of the pickup truck occupants were observed unrestrained in comparison to 7% of car occupants.

Observed Safety Belt Use



The law requires children under 18 years of age to wear safety belts in all vehicles. Despite the law, they mimic the behavior of adults in pickup trucks — having a similar safety belt use rate.

REPEALING PICKUP TRUCK EXEMPTION



Driver Ejected
Pickup Truck Roll-Over
Miller County Liberal - GA
Photo by: April Bryant

- Georgia is the **only** state with a primary belt law that excludes pickup trucks.
- If pickup truck restraint use rates were the same as the rates for other vehicles in Georgia, there would be **107 lives saved** and **928 fewer injuries** per year.
- If occupants were restrained approximately **\$30 million** of the hospital and emergency room charges would have been saved.

