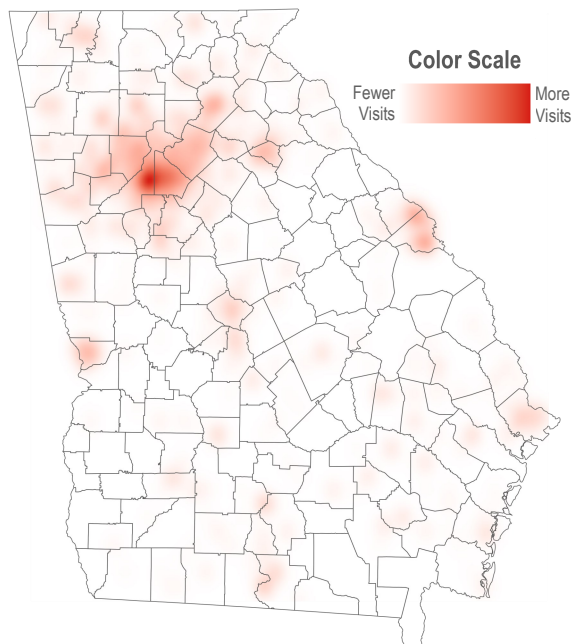


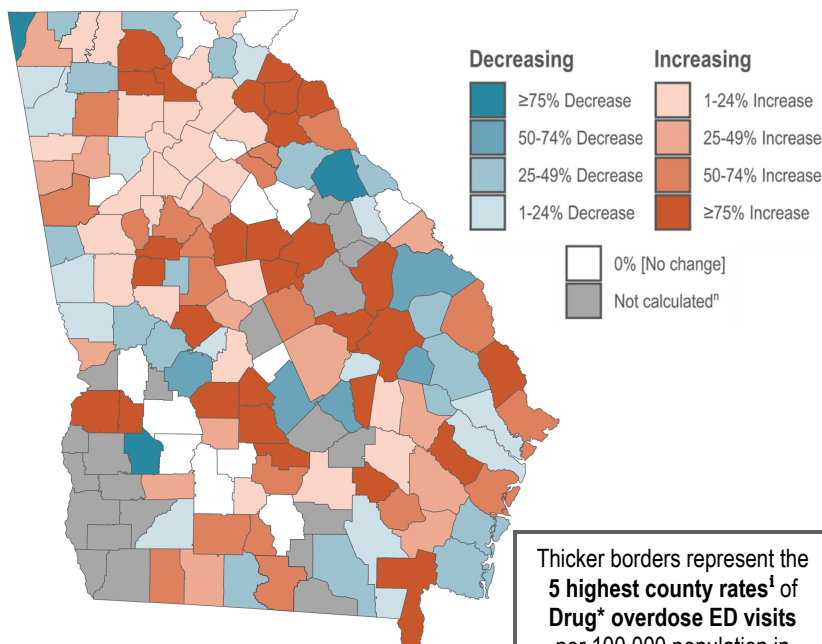
Syndromic Surveillance Drug Overdose Emergency Department Visits: Georgia, July 2023

What is Syndromic Surveillance (SyS)? SyS is used as an early detection method for potential clusters or outbreaks, by tracking suspected drug overdose-involved emergency department (ED) visits based on the patient's chief complaint upon admission and/or discharge diagnosis. Participating Georgia hospitals and urgent care facilities share these SyS data within the State Electronic Notifiable Disease Surveillance System (SendSS).

Drug* Overdose ED Visits by Patient Zip Code[^],
Georgia, July 2023



Percent Changeⁿ of Drug* Overdose ED Visits,
Georgia, Feb 2023 - Apr 2023 to May 2023 - Jul 2023
(compares previous 3 months to current 3 months)



Top 5 Counties[^] with 15 or More Drug* Overdose ED Visits During July 2023

County	Monthly Rate ⁱ per 100,000 Population Jul 2023	Monthly Rate ⁱ per 100,000 Population Aug 2022 - Jul 2023
Carroll	40.3	
Richmond	39.1	
Clarke	35.4	
Lowndes	30.8	
Whitfield	30.3	

Thicker borders represent the
**5 highest county rates¹ of
Drug* overdose ED visits
per 100,000 population in
July 2023**
(see table below)

**Statewide,
1,716 ED visits for
Drug* overdoses
occurred in
July 2023,
compared to 1,572 in
July 2022.**

Data source: Suspected drug overdose ED/Urgent Care visits by chief complaint upon admission and/or discharge diagnosis reported to DPH Syndromic Surveillance. See data limitations [here](#).

*Drugs may include any over the counter, prescription, or illicit drug.

[^]Zip code and county are based on patient residence.

ⁱRate indicates visits per 100,000 persons using 2022 Census data as the denominator. Excluded rates for counties with <15 visits.

ⁿPercent change data by county excludes counties with less than 3 visits.

*Drug Specific Categories are not mutually exclusive and include illicit and prescription drugs. Specific drugs identified using the chief complaint and/or discharge diagnosis fields and are not meant to be comprehensive.

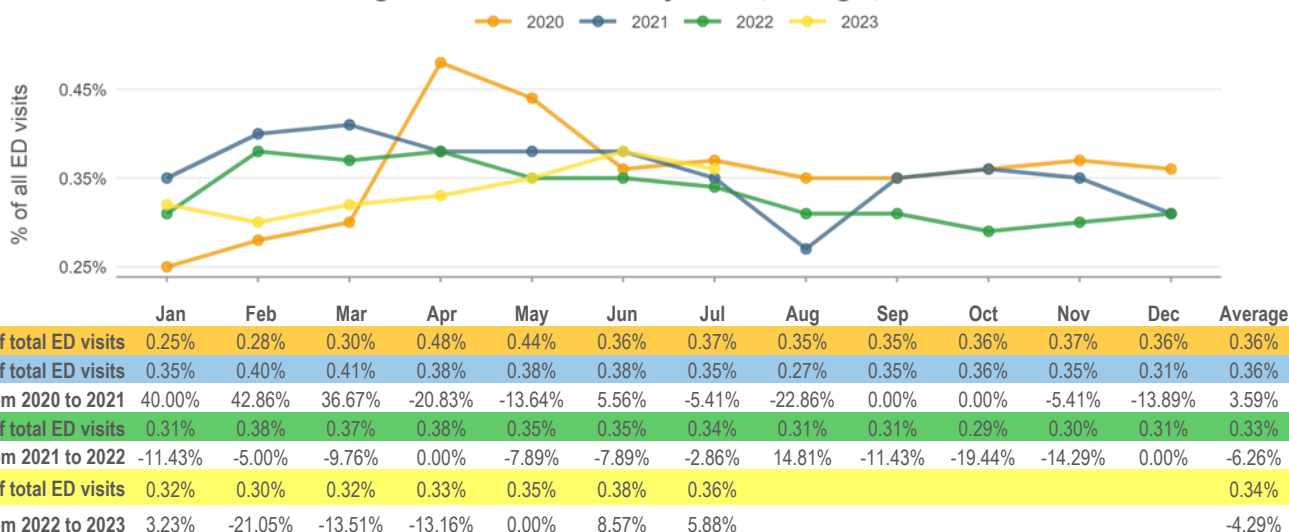
Note: All data excludes patients ≤9 years of age. Counts represent the number of ED visits instead of the number of patients, therefore, patients with repeat visits may have been counted more than once.

Note: SyS data is not the same as emergency department discharge data; drug overdose SyS data is limited and based on accuracy of chief complaint and/or discharge diagnosis and what is reported to DPH SyS. Data is subject to change due to the current number of participating facilities and/or improvements to data quality. Data shown on this report may not depict the true burden of drug overdose in Georgia.

Syndromic Surveillance Drug Overdose Emergency Department Visits: Georgia, July 2023

Drug* Overdose ED Visits by Month, Georgia, 2020-2023

Note: Proportion of ED visits may be affected by changes in the number of ED visits during COVID-19.



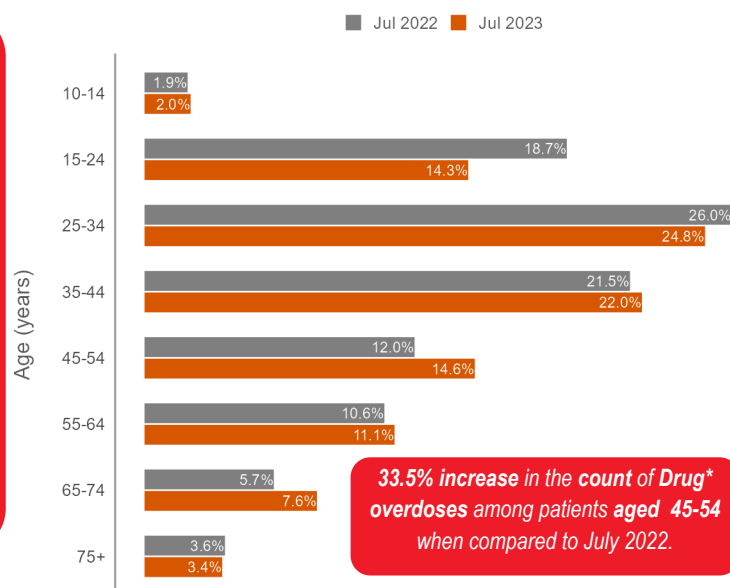
Drug* Overdose ED Visits by Sex, Race, and Age Group, Georgia, July 2022 and July 2023

Rate¹ of Drug* Overdose ED Visits

	Jul 2022 Rate ¹ (per 100,000 population)	Jul 2023 Rate ¹ (per 100,000 population)
Overall	17.8	19.4
Sex		
Female	16.2	18.3
Male	19.5	20.5
Race		
Black	11.8	16.6
White	19.7	20.1
Other	19.9	11.8
Age Group (years)		
10-14	4.1	4.8
15-24	38.0	31.8
25-34	27.1	28.2
35-44	23.4	26.2
45-54	13.5	18.0
55-64	12.5	14.2
65-74	9.1	13.2
75+	8.6	9.1

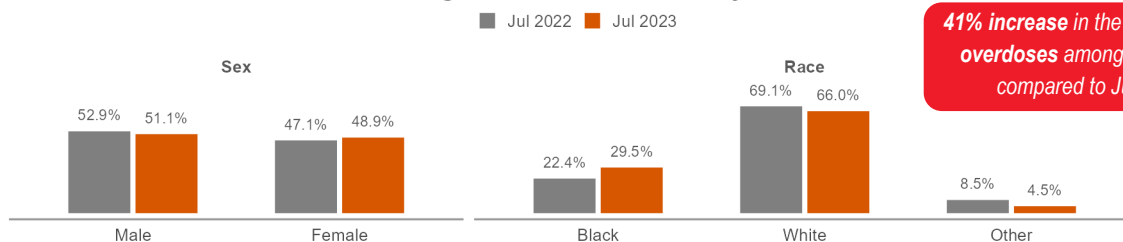
Drug* overdose ED visits in July 2023 were predominantly: **Male (51%), White (62.2%), and between 25-34 years of age (24.8%).**

Percent of All Drug* Overdose ED Visits by Age Group



33.5% increase in the count of Drug* overdoses among patients aged 45-54 when compared to July 2022.

Percent of All Drug* Overdose ED Visits by Sex and Race



41% increase in the count of Drug* overdoses among Blacks when compared to June 2022.

13.2% increase in the count of Drug* overdoses among females when compared to July 2022.

Data source: Suspected drug overdose ED/Urgent Care visits by chief complaint upon admission and/or discharge diagnosis reported to DPH Syndromic Surveillance. See data limitations [here](#).

*Drugs may include any over the counter, prescription, or illicit drug.

¹Zip code and county are based on patient residence.

²Rate indicates visits per 100,000 persons using 2022 Census data as the denominator. Excluded rates for counties with <15 visits.

³Percent change data by county excludes counties with less than 3 visits.

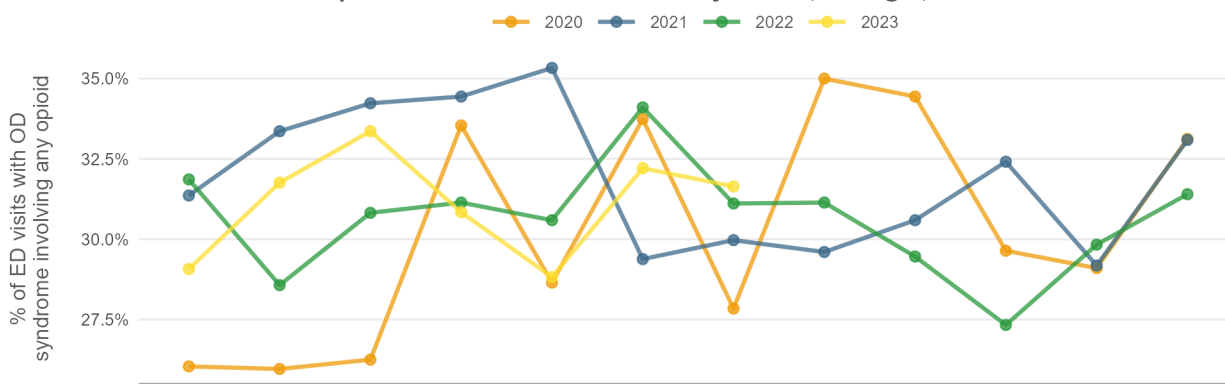
*Drug Specific Categories are not mutually exclusive and include illicit and prescription drugs. Specific drugs identified using the chief complaint and/or discharge diagnosis fields and are not meant to be comprehensive.

Note: All data excludes patients ≤9 years of age. Counts represent the number of ED visits instead of the number of patients, therefore, patients with repeat visits may have been counted more than once.

Note: SyS data is not the same as emergency department discharge data; drug overdose SyS data is limited and based on accuracy of chief complaint and/or discharge diagnosis and what is reported to DPH SyS. Data is subject to change due to the current number of participating facilities and/or improvements to data quality. Data shown on this report may not depict the true burden of drug overdose in Georgia.

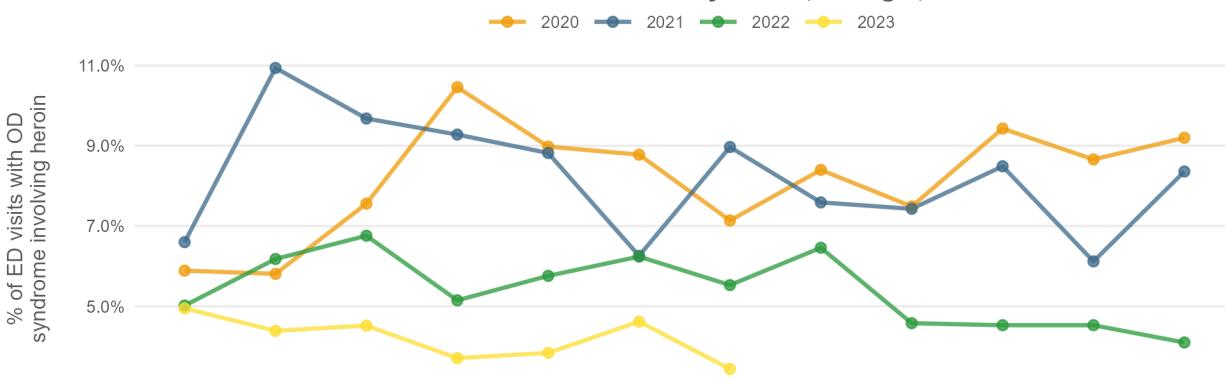
Syndromic Surveillance Drug Overdose Emergency Department Visits: Georgia, July 2023

Opioid-Involved* OD ED Visits by Month, Georgia, 2020-2023



	Jan	Feb	Mar	Apr	May	Jun	Jul	Aug	Sep	Oct	Nov	Dec	Average
2020 % of OD ED visits	26.04%	25.96%	26.25%	33.54%	28.65%	33.74%	27.84%	35.00%	34.44%	29.64%	29.10%	33.12%	30.28%
2021 % of OD ED visits	31.36%	33.36%	34.23%	34.44%	35.33%	29.38%	29.97%	29.60%	30.59%	32.41%	29.18%	33.09%	31.91%
% change from 2020 to 2021	20.43%	28.51%	30.40%	2.68%	23.32%	-12.92%	7.65%	-15.43%	-11.18%	9.35%	0.27%	-0.09%	6.92%
2022 % of OD ED visits	31.86%	28.57%	30.82%	31.14%	30.59%	34.10%	31.11%	31.14%	29.46%	27.33%	29.83%	31.40%	30.61%
% change from 2021 to 2022	1.59%	-14.36%	-9.96%	-9.58%	-13.42%	16.07%	3.80%	5.20%	-3.69%	-15.67%	2.23%	-5.11%	-3.58%
2023 % of OD ED visits	29.07%	31.76%	33.36%	30.84%	28.82%	32.21%	31.64%						31.10%
% change from 2022 to 2023	-8.76%	11.17%	8.24%	-0.96%	-5.79%	-5.54%	1.70%						0.01%

Heroin-Involved* OD ED Visits by Month, Georgia, 2020-2023



	Jan	Feb	Mar	Apr	May	Jun	Jul	Aug	Sep	Oct	Nov	Dec	Average
2020 % of OD ED visits	5.89%	5.81%	7.56%	10.46%	8.98%	8.78%	7.14%	8.40%	7.49%	9.43%	8.66%	9.20%	8.15%
2021 % of OD ED visits	6.60%	10.94%	9.68%	9.28%	8.82%	6.26%	8.97%	7.59%	7.43%	8.49%	6.12%	8.36%	8.21%
% change from 2020 to 2021	12.05%	88.30%	28.04%	-11.28%	-1.78%	-28.70%	25.63%	-9.64%	-0.80%	-9.97%	-29.33%	-9.13%	4.45%
2022 % of OD ED visits	5.02%	6.18%	6.76%	5.15%	5.76%	6.24%	5.53%	6.46%	4.58%	4.53%	4.53%	4.10%	5.40%
% change from 2021 to 2022	-23.94%	-43.51%	-30.17%	-44.50%	-34.69%	-0.32%	-38.35%	-14.89%	-38.36%	-46.64%	-25.98%	-50.96%	-32.69%
2023 % of OD ED visits	4.95%	4.39%	4.52%	3.71%	3.84%	4.62%	3.44%						4.21%
% change from 2022 to 2023	-1.39%	-28.96%	-33.14%	-27.96%	-33.33%	-25.96%	-37.79%						-26.93%

Link(s) of interest:

[Georgia Department of Public Health, Drug Overdose Emergency Medical Service \(EMS\) Monthly Reports, Apr – May 2023](#)

[Cannabis-Involved Emergency Department Visits Among Person Aged <25 Years Before and During the COVID-19 Pandemic – United States, 2019-2022](#)

Data source: Suspected drug overdose ED/Urgent Care visits by chief complaint upon admission and/or discharge diagnosis reported to DPH Syndromic Surveillance. See data limitations [here](#).

*Drugs may include any over the counter, prescription, or illicit drug.

^aZip code and county are based on patient residence.

ⁱRate indicates visits per 100,000 persons using 2022 Census data as the denominator. Excluded rates for counties with <15 visits.

ⁿPercent change data by county excludes counties with less than 3 visits.

*Drug Specific Categories are not mutually exclusive and include illicit and prescription drugs. Specific drugs identified using the chief complaint and/or discharge diagnosis fields and are not meant to be comprehensive.

Note: All data excludes patients ≤9 years of age. Counts represent the number of ED visits instead of the number of patients, therefore, patients with repeat visits may have been counted more than once.

Note: SyS data is not the same as emergency department discharge data; drug overdose SyS data is limited and based on accuracy of chief complaint and/or discharge diagnosis and what is reported to DPH SyS. Data is subject to change due to the current number of participating facilities and/or improvements to data quality. Data shown on this report may not depict the true burden of drug overdose in Georgia.