

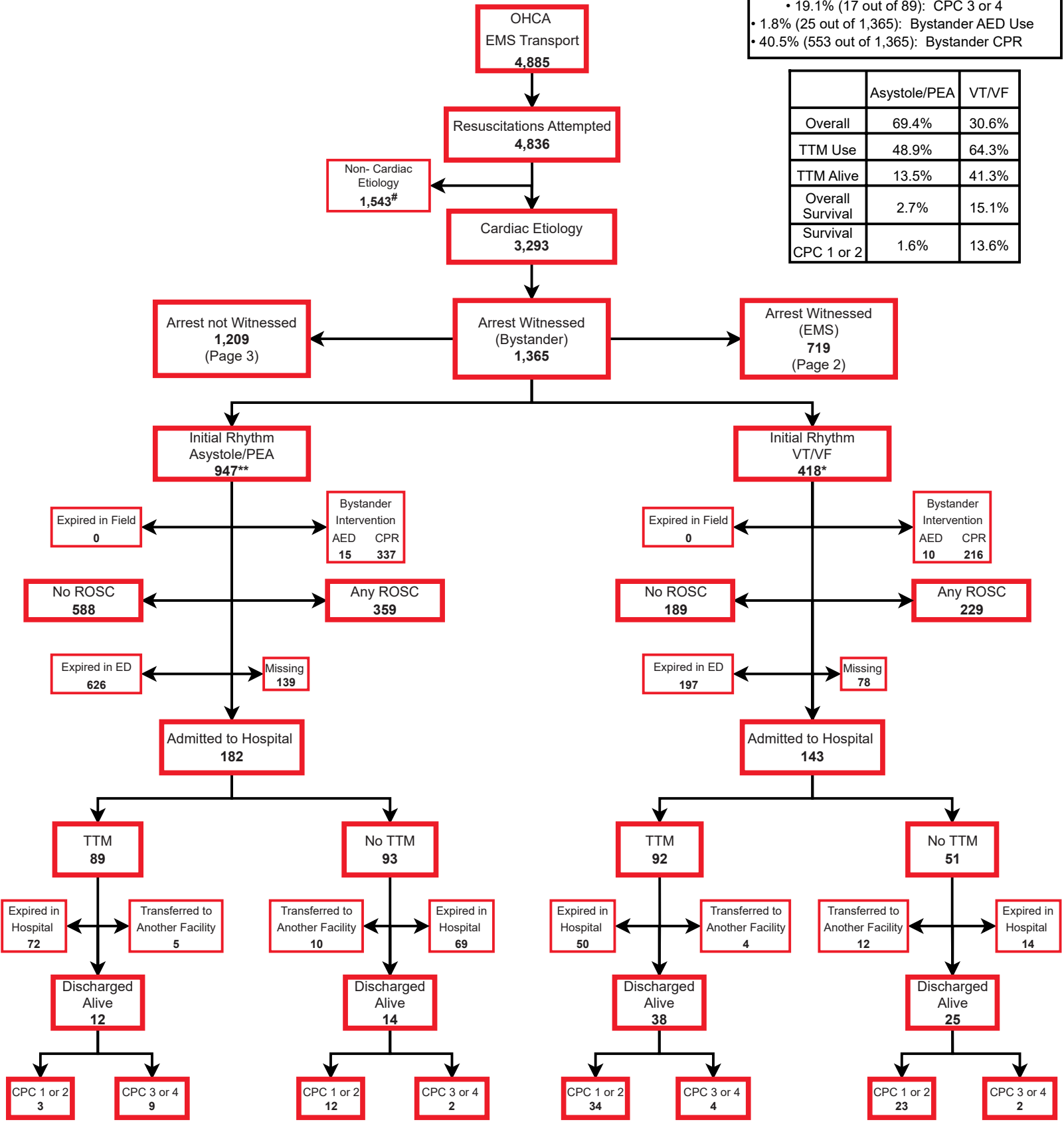


**STATE OF GEORGIA  
Utstein Report  
1/01/2021 - 12/31/2021  
OHCA Cardiac Etiology**

**Bystander Witnessed OHCA Cardiac Etiology**

- 43.1% (588 out of 1,365): ROSC
- 23.8% (325 out of 1,365): Survival to Admission
- 6.5% (89 out of 1,365): Survival to Discharge
  - 80.9% (72 out of 89): CPC 1 or 2
  - 19.1% (17 out of 89): CPC 3 or 4
- 1.8% (25 out of 1,365): Bystander AED Use
- 40.5% (553 out of 1,365): Bystander CPR

	Asystole/PEA	VT/VF
Overall	69.4%	30.6%
TTM Use	48.9%	64.3%
TTM Alive	13.5%	41.3%
Overall Survival	2.7%	15.1%
Survival CPC 1 or 2	1.6%	13.6%



**Abbreviations & Definitions on the last page**

#Drowning/Submersion (26), Drug overdose (197), Electrocutation (6), Exsanguination (25), Respiratory/Asphyxia (574), Trauma (428), SIDS, Suspected (1), & Other (286)  
 \*Ventricular Fibrillation (329), Ventricular Tachycardia-Pulseless (32), Unknown AED Shockable Rhythm (57)  
 \*\*Asystole (584), PEA (336), Unknown AED Non-Shockable Rhythm (27)

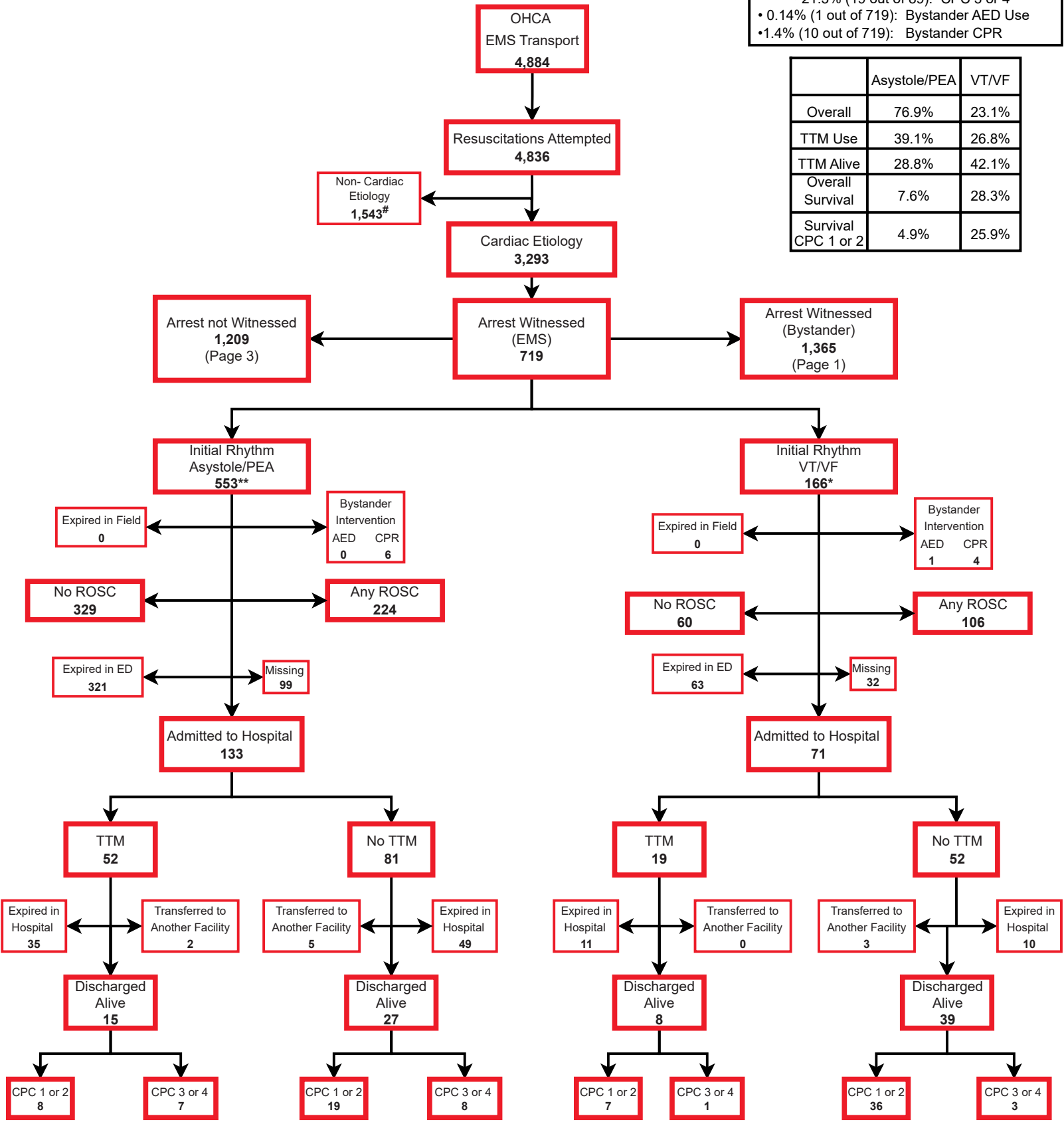


STATE OF GEORGIA  
Utstein Report  
1/01/2021 - 12/31/2021  
OHCA Cardiac Etiology

**Witnessed (EMS) OHCA Cardiac Etiology**

- 45.9% (330 out of 719): ROSC
- 28.4% (204 out of 719): Survival to Admission
- 12.4% (89 out of 719): Survival to Discharge
  - 78.7% (70 out of 89): CPC 1 or 2
  - 21.3% (19 out of 89): CPC 3 or 4
- 0.14% (1 out of 719): Bystander AED Use
- 1.4% (10 out of 719): Bystander CPR

	Asystole/PEA	VT/VF
Overall	76.9%	23.1%
TTM Use	39.1%	26.8%
TTM Alive	28.8%	42.1%
Overall Survival	7.6%	28.3%
Survival CPC 1 or 2	4.9%	25.9%



Abbreviations & Definitions on the last page

#Drowning/Submersion (26), Drug overdose (197), Electrocutation (6), Exsanguination (25), Respiratory/Asphyxia (574), Trauma (428), SIDS, Suspected (1), & Other (286)  
 \*Ventricular Fibrillation (120), Ventricular Tachycardia-Pulseless (31), Unknown AED Shockable Rhythm (15)  
 \*\*Asystole (225), PEA (292), Unknown AED Non-Shockable Rhythm (36)

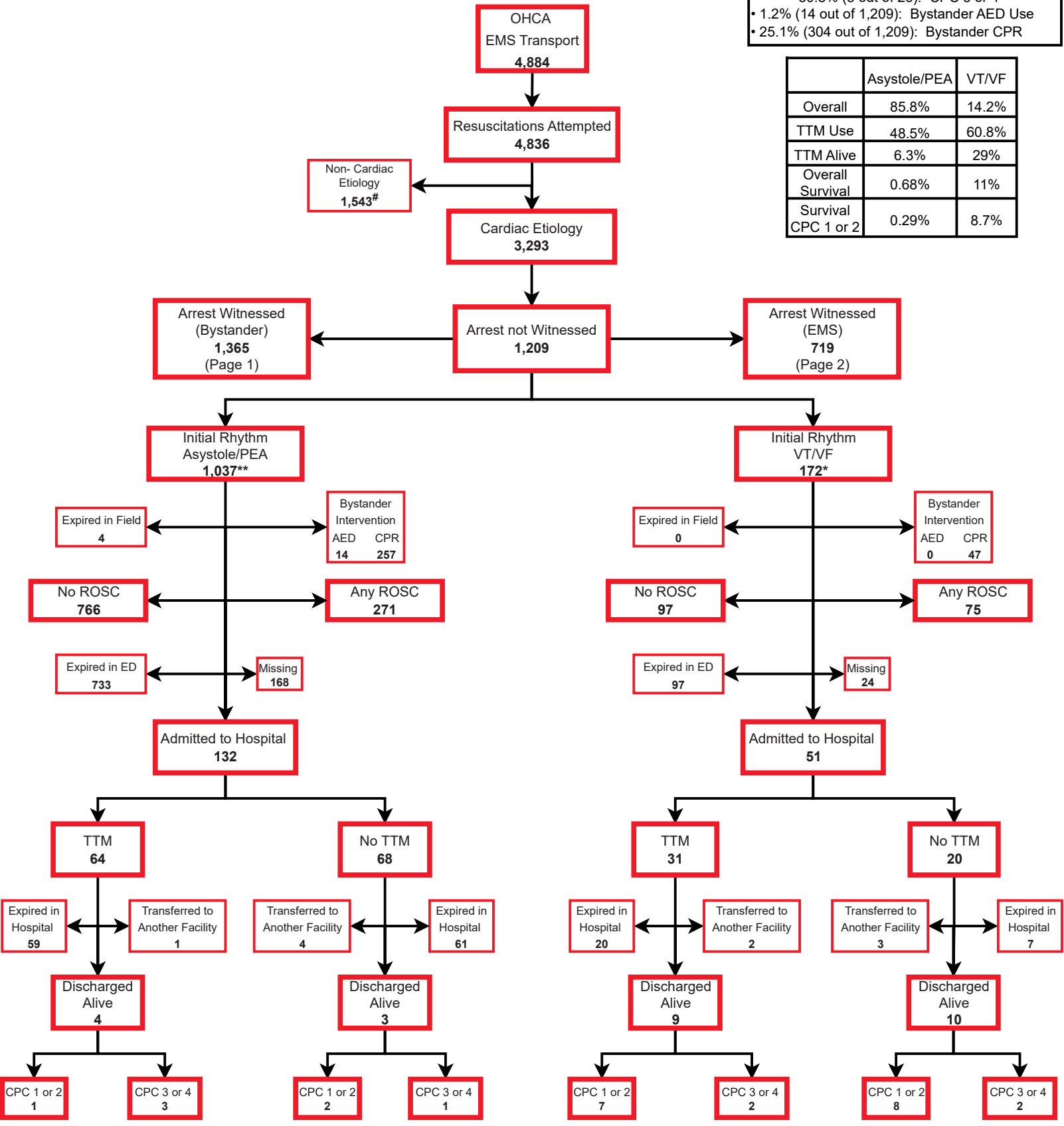


**STATE OF GEORGIA  
Utstein Report  
1/01/2021 - 12/31/2021  
OHCA Cardiac Etiology**

**Unwitnessed OHCA Cardiac Etiology**

- 28.6% (346 out of 1,209): ROSC
- 15.1% (183 out of 1,209): Survival to Admission
- 2.2% (26 out of 1,209): Survival to Discharge
  - 69.2% (18 out of 26): CPC 1 or 2
  - 30.8% (8 out of 26): CPC 3 or 4
- 1.2% (14 out of 1,209): Bystander AED Use
- 25.1% (304 out of 1,209): Bystander CPR

	Asystole/PEA	VT/VF
Overall	85.8%	14.2%
TTM Use	48.5%	60.8%
TTM Alive	6.3%	29%
Overall Survival	0.68%	11%
Survival CPC 1 or 2	0.29%	8.7%



**Abbreviations & Definitions on the last page**

#Drowning/Submersion (26), Drug overdose (197), Electrocutation (6), Exsanguination (25), Respiratory/Asphyxia (574), Trauma (428), SIDS, Suspected (1), & Other (286)  
 \*Ventricular Fibrillation (138), Ventricular Tachycardia-Pulseless (15), Unknown AED Shockable Rhythm (19)  
 \*\*Asystole (805), PEA (205), Unknown AED Non-Shockable Rhythm (27)

## Abbreviations and Definitions

AED	Automated External Defibrillator
CPC	Cerebral Performance Category
CPR	Cardiopulmonary Resuscitation
ED	Emergency Department
EMS	Emergency Medical Services
OHCA	Out-of-Hospital Cardiac Arrest
PEA	Pulseless Electrical Activity
ROSC	Return of Spontaneous Circulation
TTM	Target Temperature Management
VF	Ventricular Fibrillation
VT	Ventricular Tachycardia

This report is based on data from 41 hospitals  
Excludes unknown first monitored arrest rhythm of patient  
EMS includes licensed first responders