

Georgia Weekly Influenza Report

MMWR Week 17

Updated 5/5/2017

Week 17 (April 32 — April 29, 2017) Synopsis

During week 17 there was minimal influenza-like illness activity in Georgia with sporadic occurrences of sustained flu transmission.

- **Outpatient Illness Surveillance (ILINet):** The proportion of outpatient visits for ILI was **1.75%**, which is **below** the Georgia baseline of 2.1%.
- **Geographic Spread of Influenza:** The geographic spread of influenza in Georgia was **SPORADIC** during week 17.
- **Metro Area Hospitalizations:** There were 2 hospitalizations due to influenza infection during week 17. There have been 1,352 hospitalizations due to influenza so far this season.
- **Influenza Related Deaths:** There were 0 confirmed deaths due to influenza. There have been 7 confirmed influenza-associated deaths as of 5/5/2017.
- **Viral Surveillance:** Of the **193** specimens tested by Georgia clinical laboratories reporting to the National Respiratory and Enteric Virus Surveillance System (NREVSS) during week 17, **14 (7.25%)** were positive for influenza. Public Health Laboratories tested 6 specimens during week 17, 2 were positive for influenza.
- **Reported Influenza Outbreaks:** There have been 36 influenza outbreaks reported to DPH between 10/02/2016 and 5/5/2017.
- **RSV Viral Surveillance:** Of the **219** specimens tested and reported by the Georgia Public Health Laboratory (GPHL) and the National Respiratory and Enteric Virus Surveillance System (NREVSS) collaborating laboratories during week 17, the percent positive of **ALL** laboratory tests was **2.28%**.

Flu News

[Health Map Vaccine Finder](#)

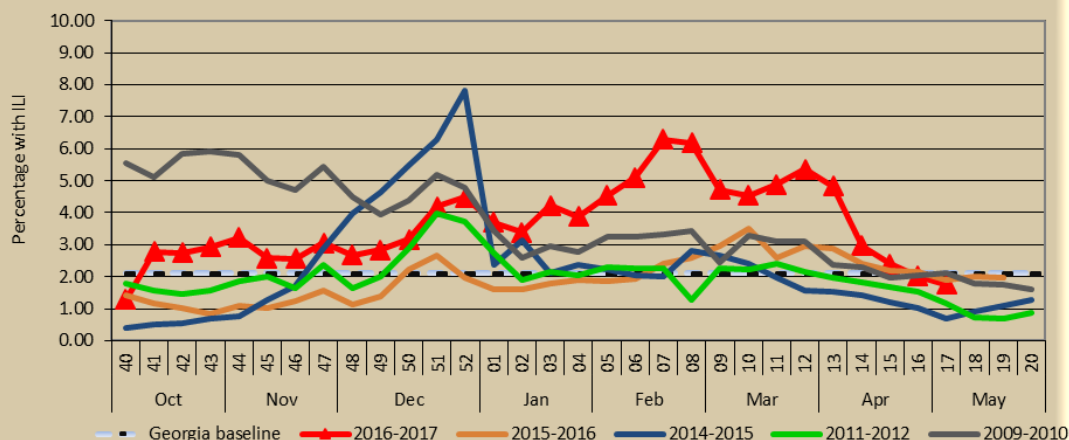
[News Scan: Avian flu outbreaks; Soy nut E coli outbreak; Biosynthetic penicillin; Measles vaccination in Africa; Meningitis in Nigeria](#)

GEORGIA DEPARTMENT OF PUBLIC HEALTH

Percentage of patients with ILI reported by ILINet providers
(Volunteer providers who report percentage of patients with ILI seen by their practice or facility weekly. This week there are currently **46** ILINet providers reporting in Georgia.)

ILINet Provider Network Data

Percentage of patients with ILI who visited an ILINet provider, Georgia, 2016-2017 and Selected Previous Seasons

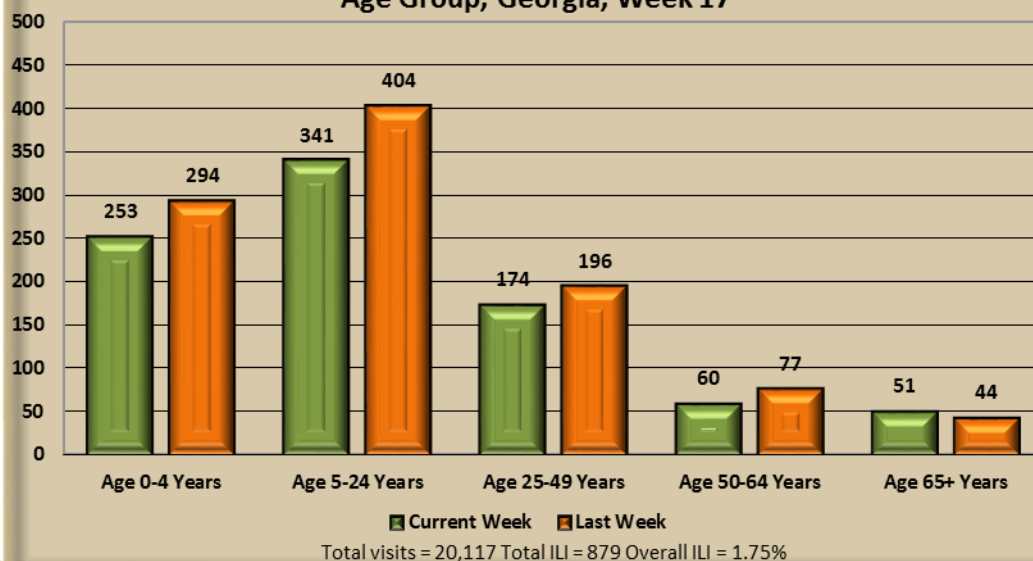


This Week: **1.75%** of patients seen in ILINet Provider offices were seen with ILI.

Note: The Georgia baseline is formulated by averaging ILI percentage during weeks of endemic activity determined by laboratory results for influenza.

ILINet Patient Visits By Age Group

Number of Patients Seen with ILI Among ILINet Providers by Age Group, Georgia, Week 17



ILINet patient visits by age group

This graph displays the number of patients seen at sentinel provider offices and diagnosed with ILI in the past week. The data are stratified by age-group.

During **week 17** those under 24 years of age were most often seen with ILI symptoms by ILINet providers.

GEORGIA DEPARTMENT OF PUBLIC HEALTH

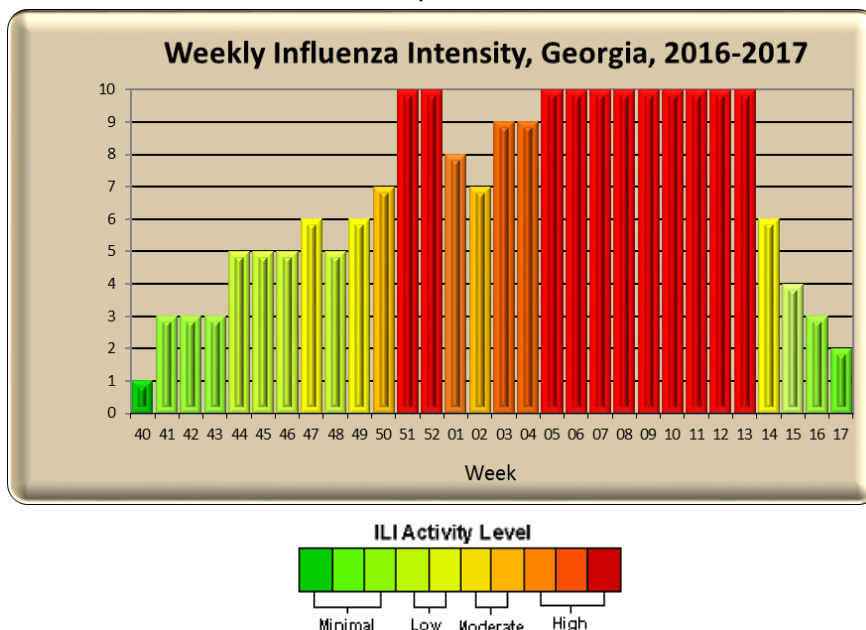
ILI Activity Level Indicator - ILINet

(This graph uses the proportion of outpatient visits for ILI to measure the ILI severity in Georgia.) For a national view, visit <http://cdc.gov/flu/weekly/>

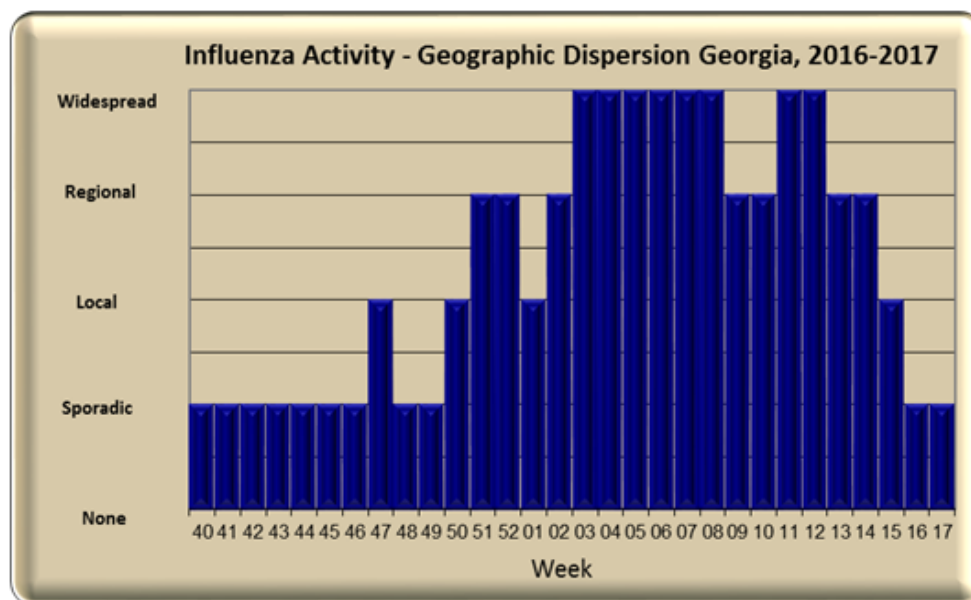
Georgia ILI Intensity Indicator

ILI Activity Levels (1 - 10) correspond to the number of standard deviations away from the 3-year mean for the current week.

This week the intensity level is: **Minimal = 2**



Georgia ILI Geographic Dispersion



This Week's Flu Code is:

SPORADIC

ILI activity has not increased and isolated lab-confirmed cases of influenza

OR

ILI activity has not increased and a lab confirmed influenza outbreak in one institution.

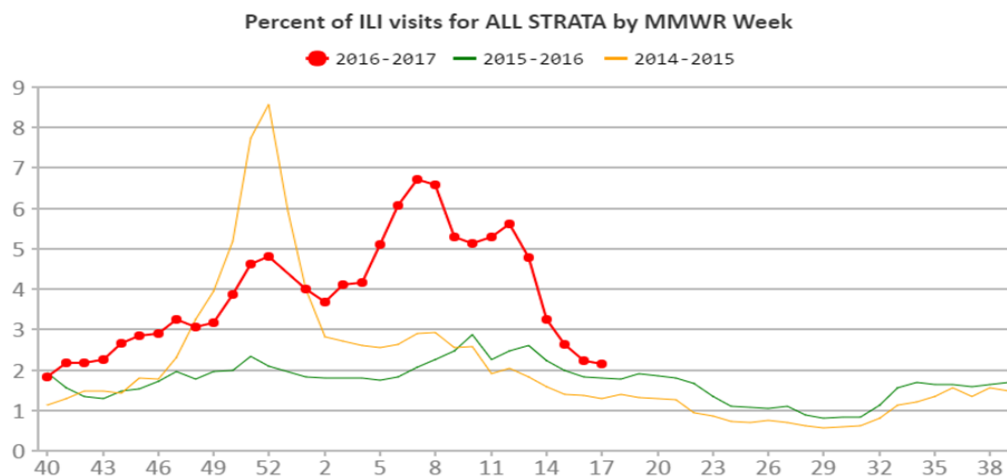
Council of State and Territorial Epidemiologists Report – Geographic Dispersion

(This graph reflects geographic dispersion and is not an indicator of influenza severity)

GEORGIA
DEPARTMENT OF
PUBLIC HEALTH

Syndromic Surveillance
Data Daily Influenza-like
Illness Syndrome
(percentage of ILI visits)

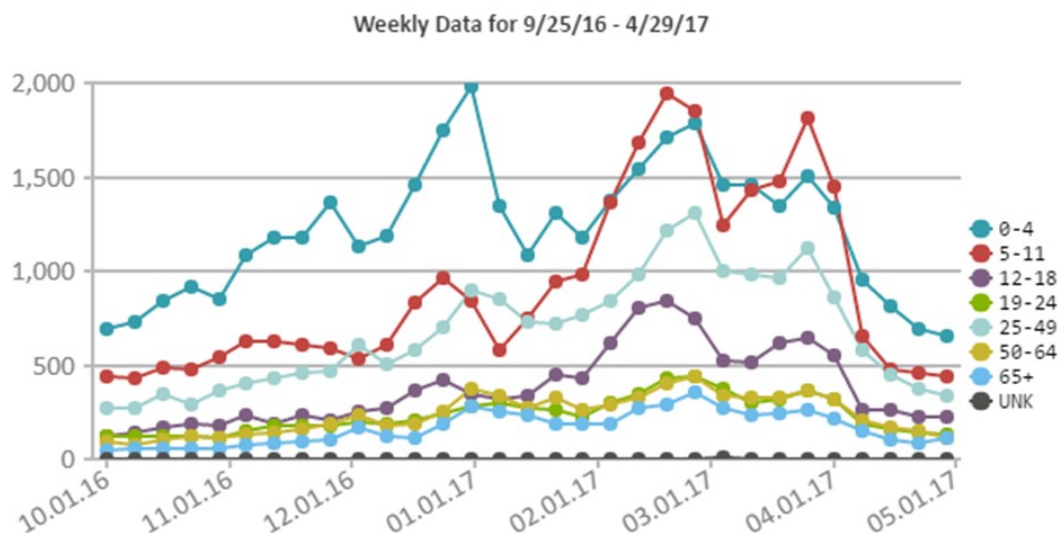
Percent of ILI Visits to Georgia Emergency Departments by MMWR Week



During **week 17** the weekly percentage of patients seen for ILI in Georgia Emergency Departments reporting to our syndromic surveillance system **decreased** to 2.08% (from 2.21% during week 16).

Number of Patient Visits with ILI Syndrome by Age Group

Syndromic Surveillance
Data Weekly Influenza-like
Illness Syndrome
(percentage of ILI visits by
Age Group)

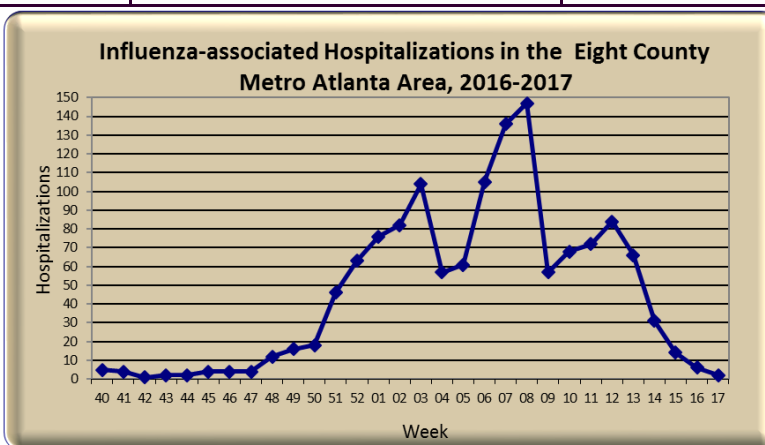


GEORGIA
DEPARTMENT OF
PUBLIC HEALTH

**Influenza Hospitaliza-
tions in the eight county
metro Atlanta area 2016-
2017** (Emerging Infections
Program data)

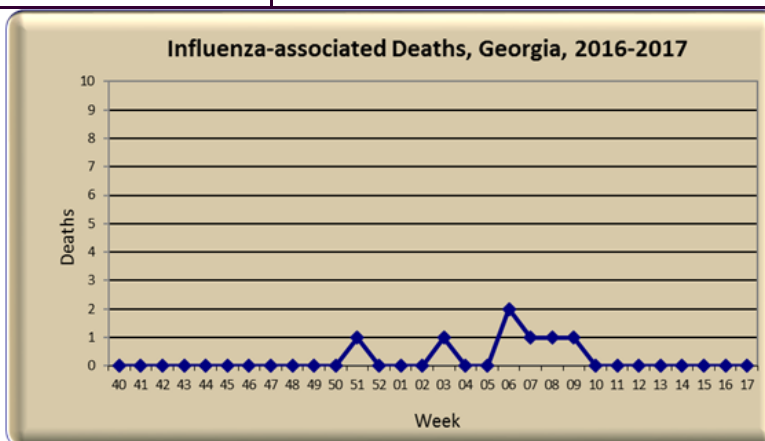
Georgia Influenza-Associated Hospitalizations

Age Group	Number of Hospitalizations (8- County Metro-Area Only)	Hospitalization Rate (Cases/100,000 people)
0 - 4	118	43.89
5 -17	160	21.86
18 - 49	258	13.95
50 - 64	249	34.08
65+	567	137.81
Unknown	0	N/A
Total	1,352	33.87



Georgia Influenza-Associated Deaths

Age Group	Number of Deaths
0 - 4	0
5 -17	0
18 - 51	0
51 - 64	0
65+	7
Total	0

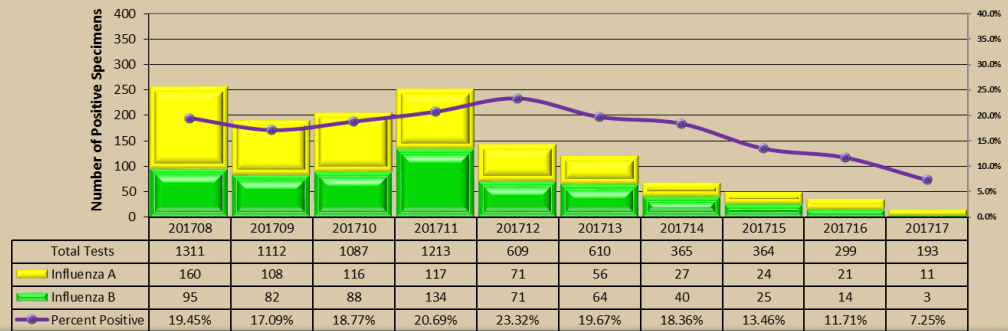


**Influenza-Associated
Deaths 2016-2017
Statewide** (Influenza-
associated deaths are a notifi-
able condition in Georgia)

GEORGIA DEPARTMENT OF PUBLIC HEALTH

Georgia Virologic Surveillance Data

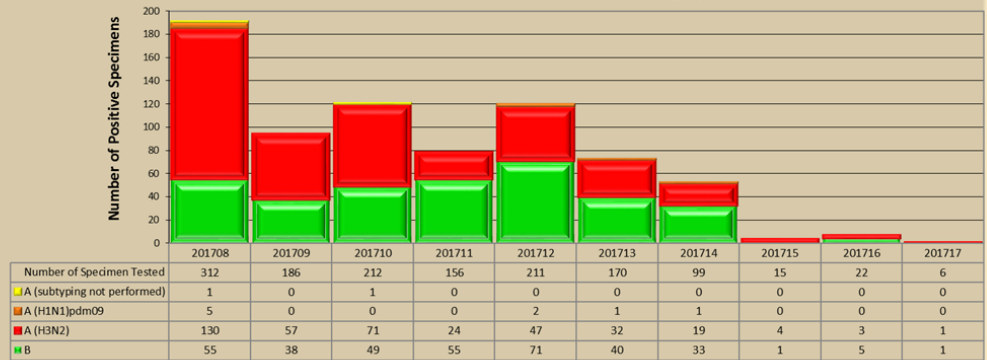
Influenza Positive Tests Reported to Public Health by Georgia Clinical Laboratories, Georgia, 2016-2017, Week 08 - 17



During **week 17** Georgia clinical laboratories reporting to NREVSS tested 193 specimens for influenza, 14 (7.25%) were positive. Both influenza A and B were identified.

Note: No subtyping information will be released from clinical laboratories

Influenza Positive Tests from Public Health Laboratories, Georgia, 2016-2017, Week 08 - 17



Public Health Laboratories tested 6 specimens for influenza during **week 17**, 2 were positive for influenza. Influenza A(H3N2) and influenza B were identified.

Georgia threshold of RSV season on- set and end

RSV season onset is defined as the first week of two (2) consecutive weeks when the percent positive of **ALL** lab confirmed tests are greater than or equal to 10%. The end of RSV season is now defined as the first week of two consecutive weeks when the percent positive of **ALL** lab confirmed tests are less than 10%.

RSV Season Sta-

tus: **OFF**

Respiratory Syncytial Virus (RSV) Surveillance Data

