

# Georgia Weekly Influenza Report

MMWR Week 51

Updated 1/4/2016

## Week 51 (Dec. 20 - Dec. 26, 2015) Synopsis

**During week 51 there was moderate influenza activity in Georgia with sporadic occurrences of sustained flu transmission.**

- **Outpatient Illness Surveillance (ILINet):** The proportion of outpatient visits for ILI was **2.67%**, which is **above** the Georgia baseline of 1.6%.
- **Geographic Spread of Influenza:** The geographic spread of influenza in Georgia was **SPORADIC** during week 51.
- **Metro Area Hospitalizations:** There were 2 hospitalizations due to influenza infection during week 51. There have been 33 hospitalizations due to influenza infection so far this season.
- **Influenza Related Deaths:** There was 1 confirmed death due to influenza. There has been 1 confirmed influenza-associated death as of 1/4/2016.
- **Viral Surveillance:** Of the **445** specimens tested by Georgia clinical laboratories reporting to the National Respiratory and Enteric Virus Surveillance System (NREVSS) during week 51, **4 (0.90%)** were positive for influenza. Georgia Public Health Laboratory (GPHL) did not report any influenza testing during week 51.
- **Reported Influenza Outbreaks:** There were **0** influenza-related outbreaks reported to public health during week 51.
- **RSV Viral Surveillance:** Of the **363** specimens tested and reported by the Georgia Public Health Laboratory (GPHL) and the National Respiratory and Enteric Virus Surveillance System (NREVSS) collaborating laboratories during week 51, the percent positive of **ALL** laboratory tests was 34.71%.

---

## Flu News

---

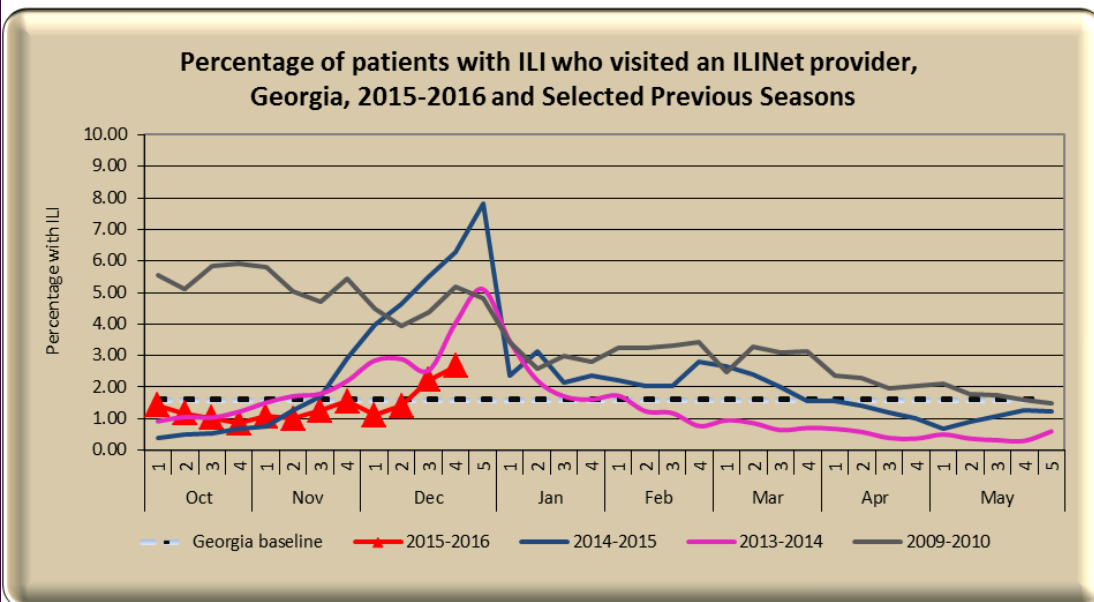
[\*Find influenza vaccine providers in your area\*](#)

[\*\*Flu Scan: H7N9 case in China; Global flu update; French avian flu outbreaks\*\*](#)

**GEORGIA  
DEPARTMENT OF  
PUBLIC HEALTH**

**Percentage of patients with ILI reported by ILINet providers**  
(Volunteer providers who report percentage of patients with ILI seen by their practice or facility weekly. This week there are currently **25** ILINet providers reporting in Georgia.)

**ILINet Provider Network Data**



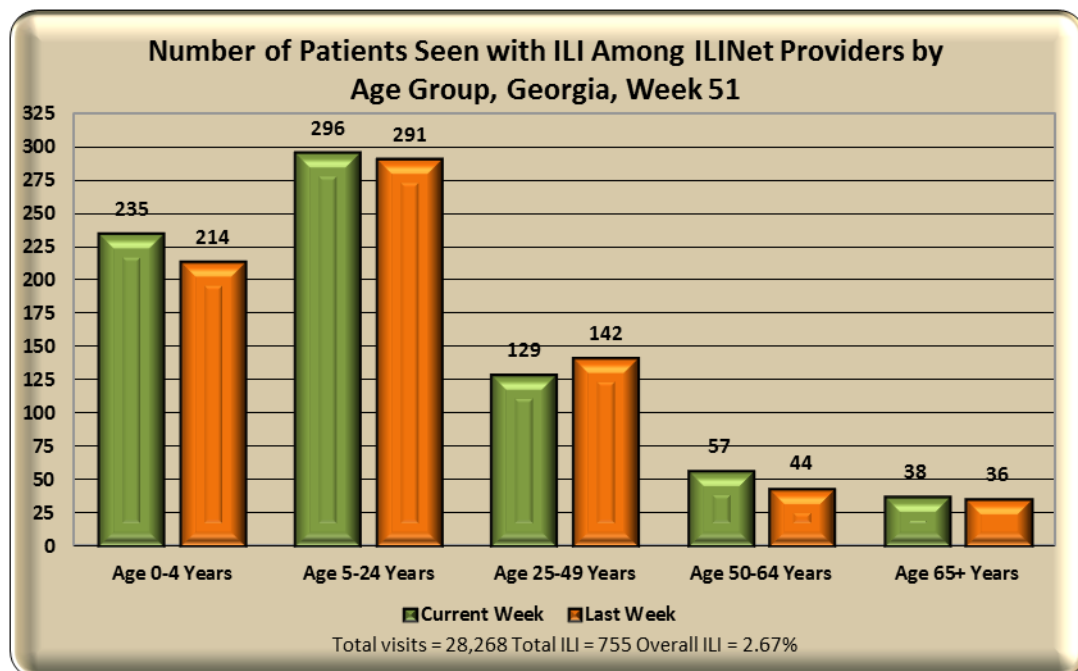
This Week: **2.67%** of patients seen in ILINet Provider offices were diagnosed with ILI.

Note: The Georgia baseline is formulated by averaging ILI percentage during weeks of endemic activity determined by laboratory results for influenza.

**ILINet Patient Visits By Age Group**

**ILINet patient visits by age group**

This graph displays the number of patients seen at sentinel provider offices and diagnosed with ILI in the past week. The data are stratified by age-group.



During **week 51** those under 24 years of age were most often seen with ILI symptoms by ILINet providers.

**GEORGIA  
DEPARTMENT OF  
PUBLIC HEALTH**

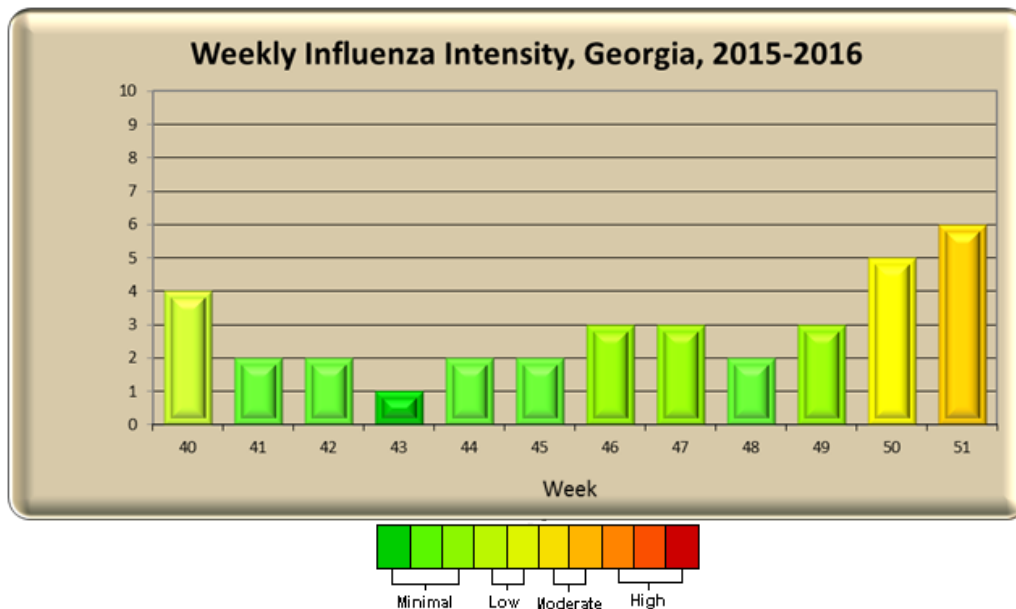
**ILI Activity Level Indicator - ILINet**

(This graph uses the proportion of outpatient visits for ILI to measure the ILI severity in Georgia.) For a national view, visit <http://cdc.gov/flu/weekly/>)

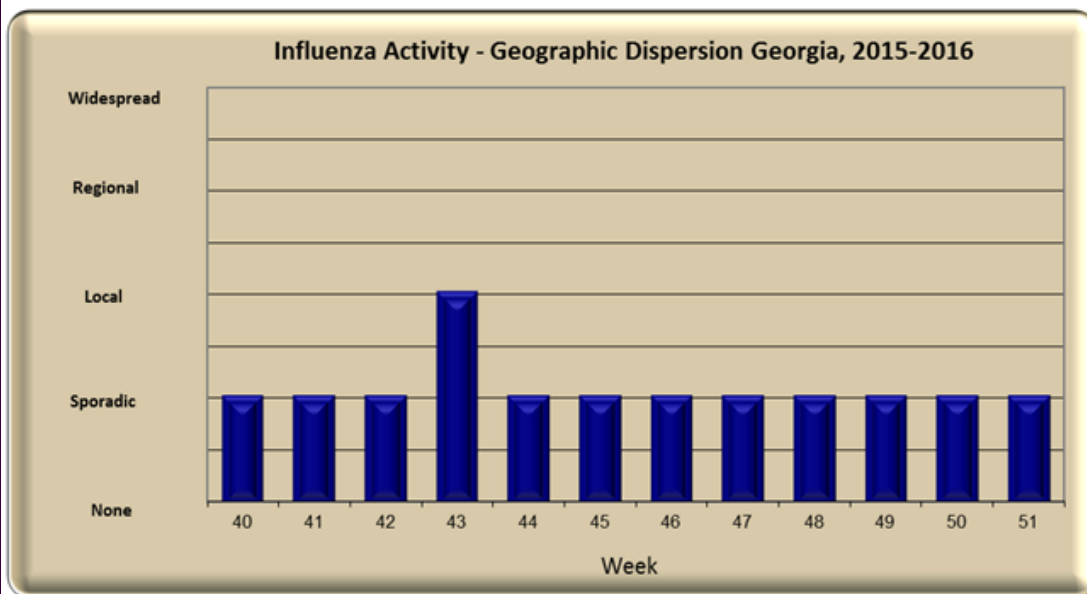
**Georgia ILI Intensity Indicator**

ILI Activity Levels (1 - 10) correspond to the number of standard deviations away from the 3-year mean for the current week.

This week the intensity level is: **Moderate = 6**



**Georgia ILI Geographic Dispersion**



This Week's Flu Code is:

**SPORADIC**

Sporadic = ILI activity has not increased and isolated lab-confirmed cases of influenza

OR

ILI activity has not increased and a lab confirmed influenza outbreak in one institution.

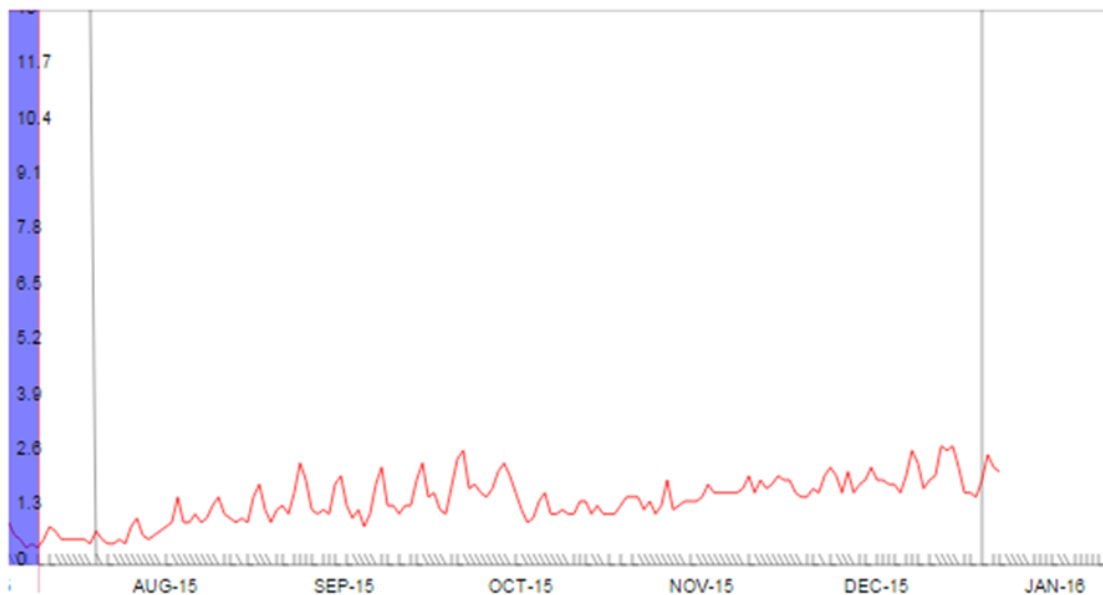
**Council of State and Territorial Epidemiologists Report – Geographic Dispersion**

(This graph reflects geographic dispersion and is not an indicator of influenza severity)

GEORGIA  
DEPARTMENT OF  
PUBLIC HEALTH

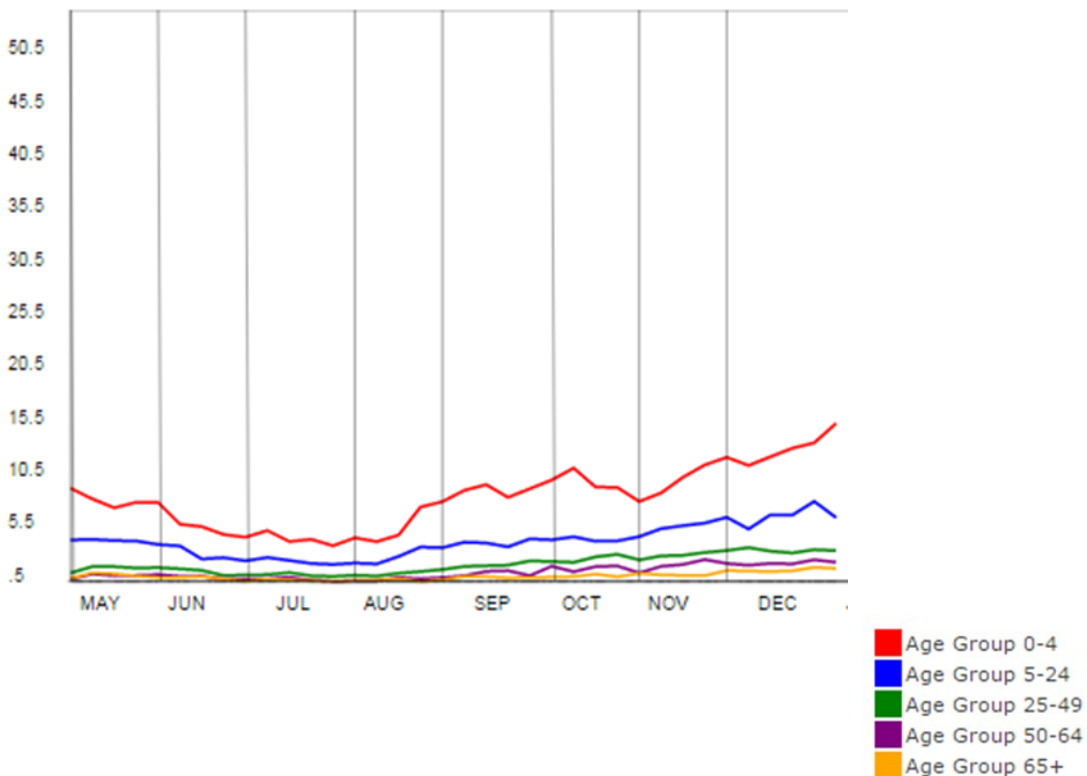
Syndromic Surveillance  
Data Daily Influenza-like  
Illness Syndrome  
(percentage of ILI visits)

### Daily Percent of ILI Syndrome Visits to Georgia Emergency



During **week 51** the daily percentage of patients seen for ILI in Georgia Emergency Departments reporting to our syndromic surveillance system increased slightly compared to the previous week.

### Percentage of Patients with ILI Syndrome Visits by Age Group



Syndromic Surveillance  
Data Weekly Influenza-like  
Illness Syndrome  
(percentage of ILI visits by  
Age Group)

**GEORGIA  
DEPARTMENT OF  
PUBLIC HEALTH**

**Influenza Hospitalizations in the eight county metro Atlanta area 2014-2015** (Emerging Infections Program data)

**Influenza-Associated Deaths 2014-2015 Statewide** (Influenza-associated deaths are a notifiable condition in Georgia)

**Influenza-Associated hospitalizations in the eight-county metro Atlanta area** (Emerging Infections Program data)

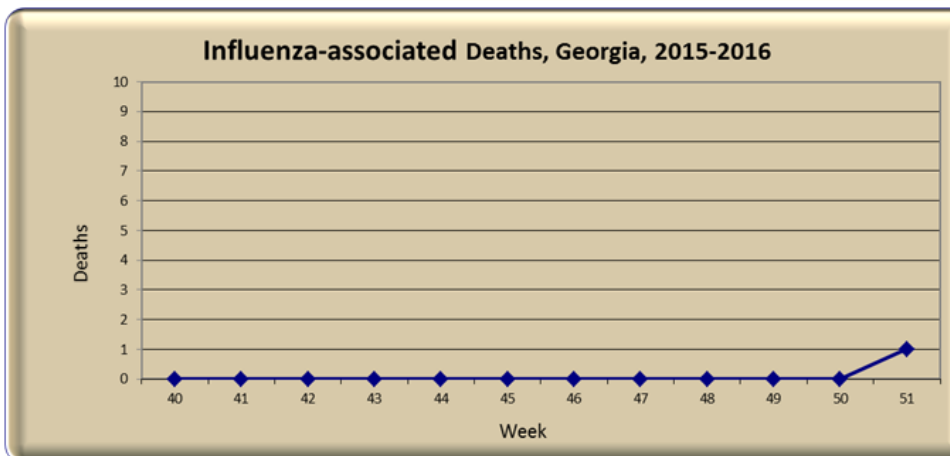
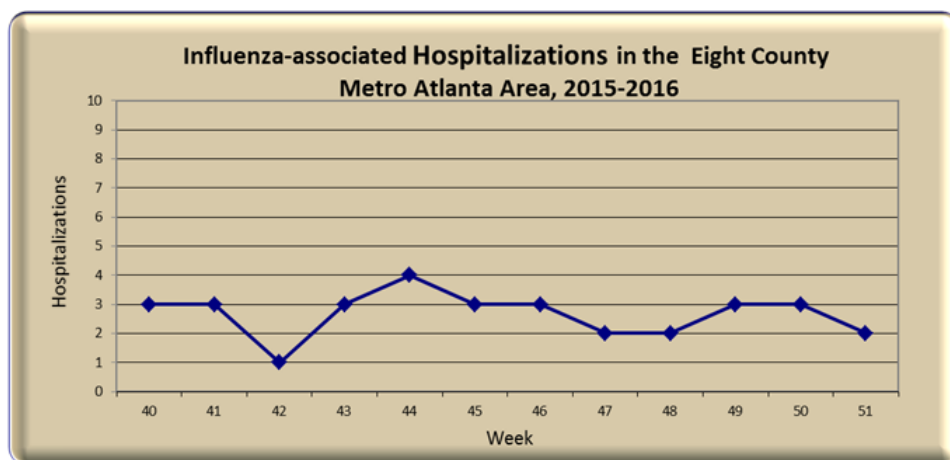
**Influenza-Associated deaths reported to Public Health**

## Georgia Influenza-Associated Hospitalizations and Deaths

Age Group	Number of Hospitalizations (8- County Metro-Area Only)
0 - 4	5
5 - 17	0
18 - 51	10
51 - 64	6
65+	12
Total	33 (For confirmation, these data are delayed.)

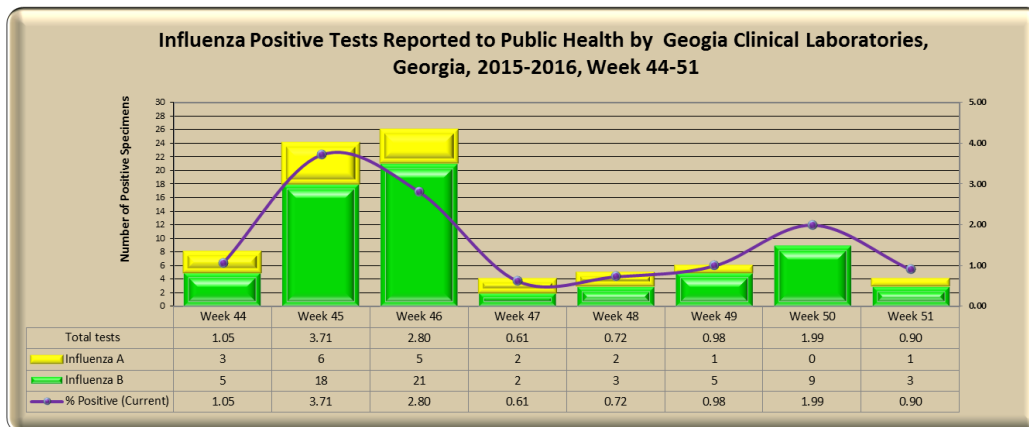
  

Age Group	Number of Deaths
0 - 4	0
5 - 17	0
18 - 51	0
51 - 64	0
65+	1
Total	1 (For confirmation, these data are delayed.)



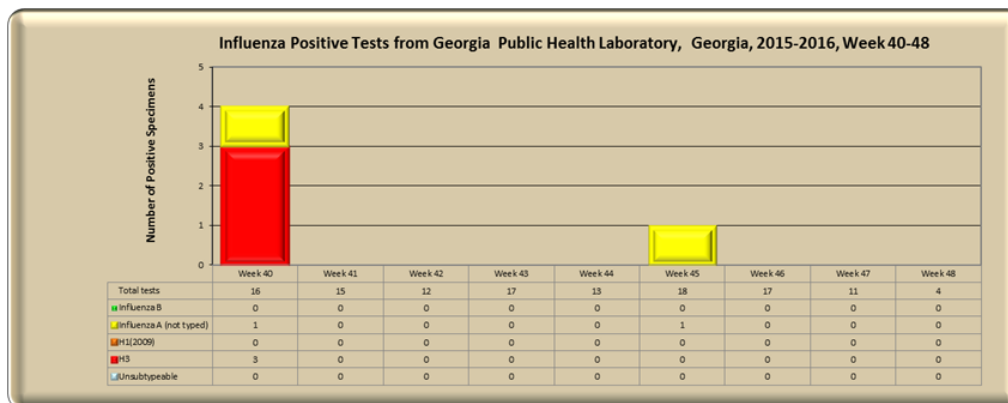
**GEORGIA  
DEPARTMENT OF  
PUBLIC HEALTH**

**Georgia Virologic Surveillance Data**



During **week 51** Georgia clinical laboratories reporting to NREVSS tested 445 specimens for influenza, 4 (0.90%) were positive. The predominate strain identified was influenza B.

Note: No subtyping information will be released from clinical laboratories



Georgia Public Health Laboratory (GPHL) did not report any influenza testing during **week 51**.

**Georgia threshold of RSV season onset and end**

RSV season onset is defined as the first week of two (2) consecutive weeks when the percent positive of **ALL** lab confirmed tests are greater than or equal to 10%. The end of RSV season is now defined as the first week of two consecutive weeks when the percent positive of **ALL** lab confirmed tests are less than 10%.

**RSV Season Status: ON**

**Respiratory Syncytial Virus (RSV) Surveillance Data**

