



2018 Annual Meeting Update

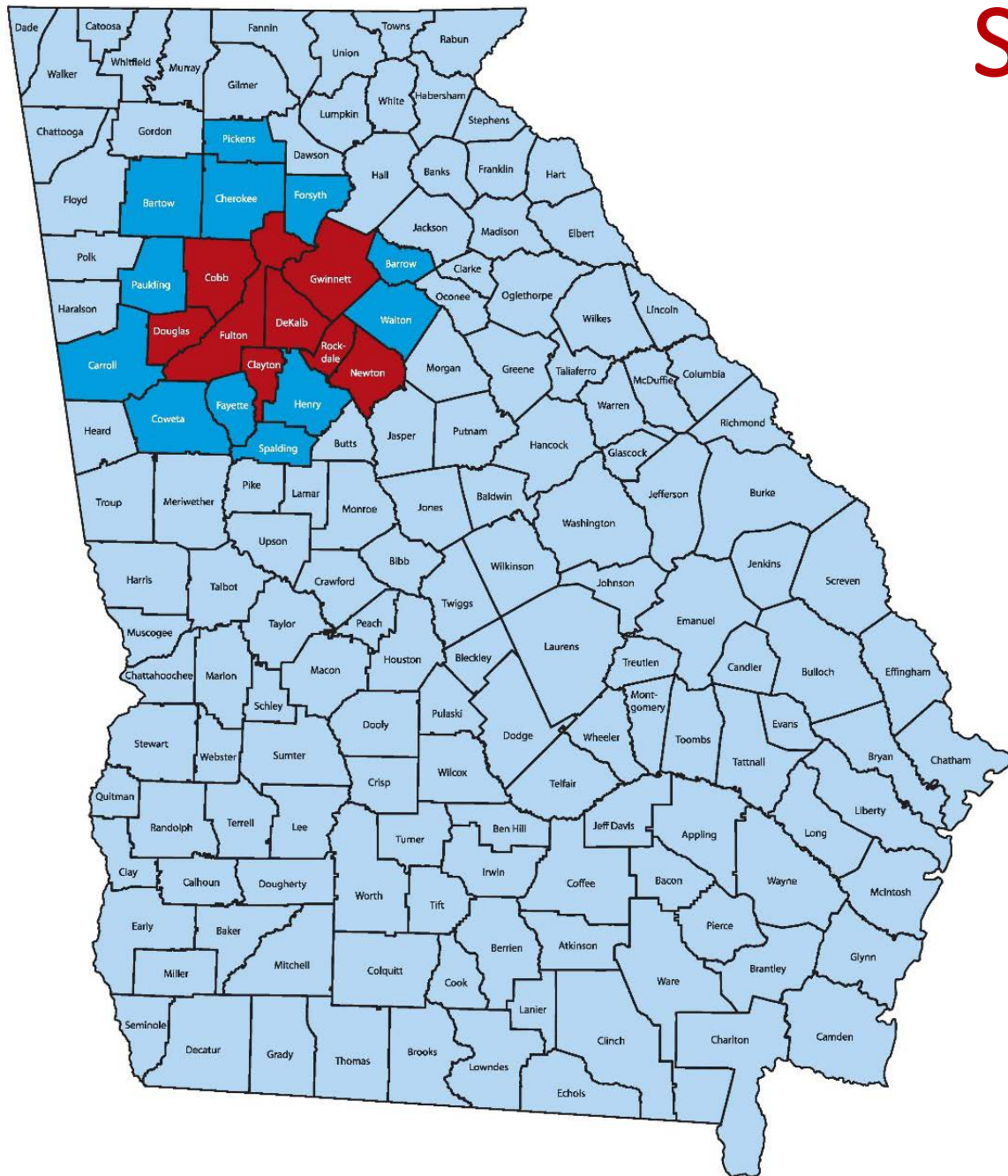
Monica M. Farley, MD

Collaboration between:

- Georgia Department of Public Health
- Emory University School of Medicine
- Atlanta VA Medical Center
- CDC



Surveillance Population



HD3: 8-county Metro Area

MSA: HD3 + 12 additional counties

GOA: 139 additional counties

2016 State Population 10.3 million

2016 20-County Metro Area (MSA)

Population 5.6 million
(54% of state pop.)

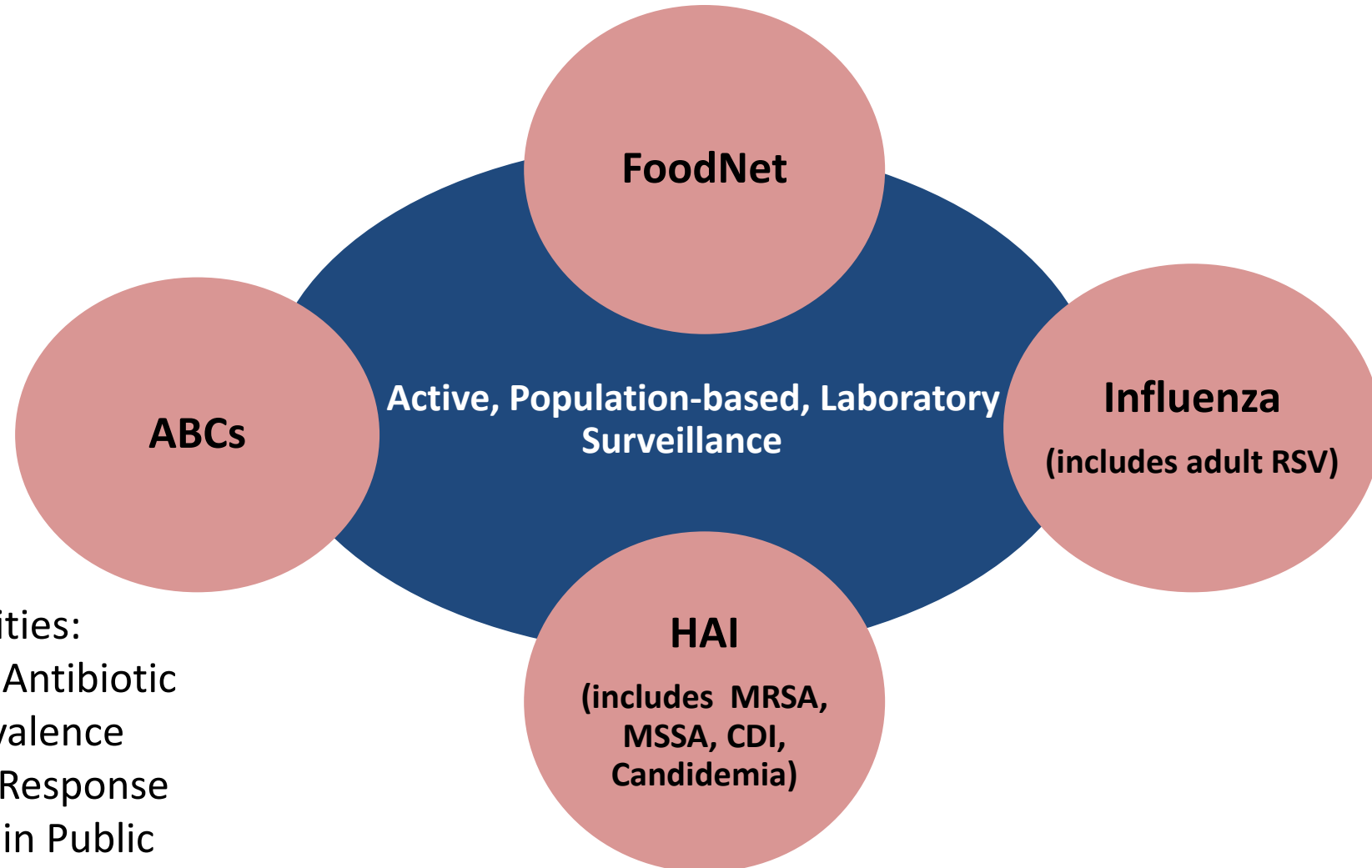
Live Births 71,541/yr (2015)
(>50% of state births)

2016 8-County Health District 3

Population 4.0 million
(39% of state pop.)



Emerging Infections Program



Other Activities:

- HAI and Antibiotic Use Prevalence
- Flexible Response
- Training in Public Health

EIP Active Surveillance 2018



ABCs (invasive)

- Group A Streptococcus
- Group B Streptococcus
- *Haemophilus influenzae*
- *Neisseria meningitidis*
- *Streptococcus pneumoniae*
- *Streptococcus pneumoniae* urine antigen
- Neonatal Sepsis
- *Legionella*
- Pertussis (respiratory)
- *Neisseria gonorrhoeae* (DGI)

Healthcare Associated Infections

- Candidemia
- Carbapenem-nonsusceptible
Enterobacteriaceae, *Pseudomonas*,
Acinetobacter
- *C. difficile*
- Invasive Mold
- MRSA, MSSA—invasive

FoodNet

- *Campylobacter*
- *Listeria*
- *Salmonella*
- Shiga toxin producing *E. coli* (STEC)
- *Shigella*
- *Yersinia*
- *Vibrio*
- *Cyclospora*
- *Cryptosporidium*

Viral

- Laboratory confirmed,
hospitalized influenza
- Laboratory confirmed,
hospitalized RSV in adults

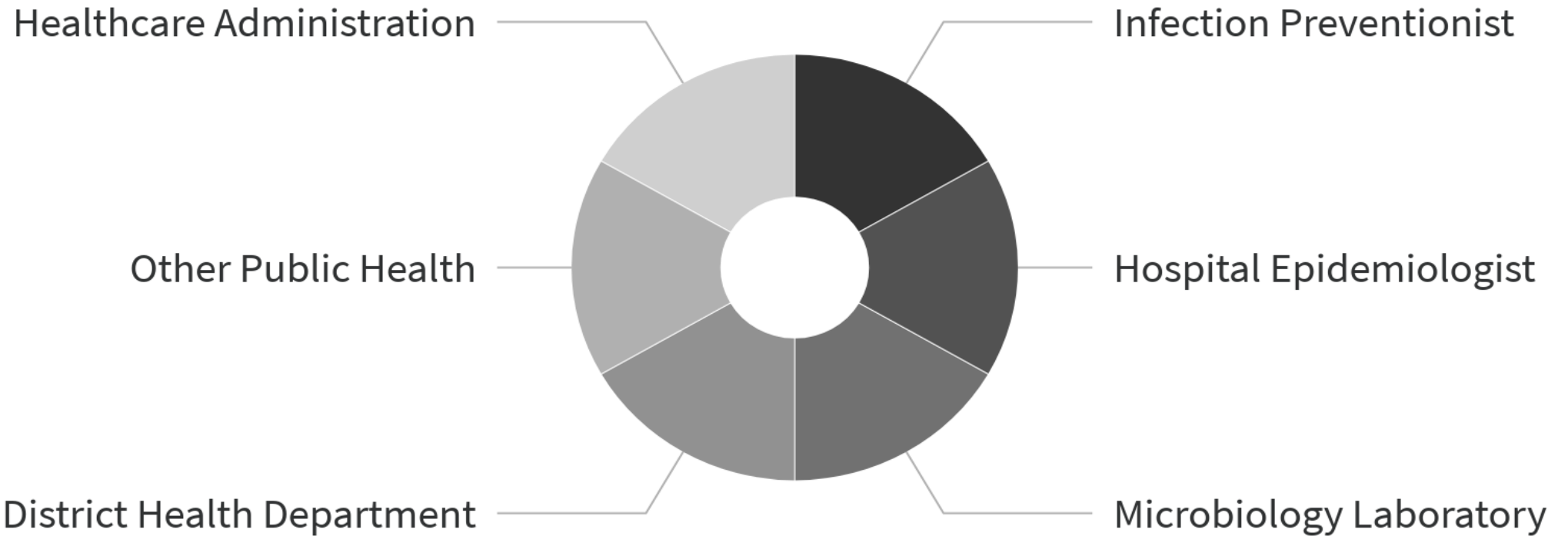


Poll Everywhere Instructions

Please text: **GAEIP235** to **22333**
to join the Poll Everywhere portion of
this meeting.

What category best describes your work?

- Infection Preventionist **A**
- Hospital Epidemiologist **B**
- Microbiology Laboratory **C**
- District Health Department **D**
- Other Public Health **E**
- Healthcare Administration **F**



Start the presentation to see live content. Still no live content? Install the app or get help at PollEv.com/app

How many annual EIP meetings have you attended?

This is my first!

2-4

5-10

11-14

I have attended all
15 annual meetings!

Start the presentation to see live content. Still no live content? Install the app or get help at PollEv.com/app

Which of the following is NOT a current EIP activity?

FoodNet

ABCs

Hospitalized, laboratory
confirmed influenza

Candidemia
surveillance

Syphilis surveillance

C. difficile surveillance

Start the presentation to see live content. Still no live content? Install the app or get help at PollEv.com/app

Who is the ABCs Coordinator at Emory/VA?



Kyle
Openo **A**



Amy
Tunali **B**



Andrew
Revis **C**



Karelys
Parada **D**

Start the presentation to see live content. Still no live content? Install the app or get help at PollEv.com/app

Who is the ABCs Coordinator at DPH?



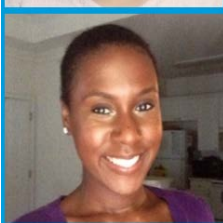
Audrey
Kunkes



Ashley
Moore



Lauren
Lorentzson



Ebony
Thomas

Start the presentation to see live content. Still no live content? Install the app or get help at PollEv.com/app

Our Emory/VA Leadership Team



Suzanne Segler, MPH
EIP Co-Director
(404) 321-6111 ext.
6492
ssegler@gaeip.org



Stepy Thomas, MSPH
EIP Co-Director
(404) 321-6111 ext.
6059
smthomas@gaeip.org

Best Wishes to Sasha Harb



THANK YOU!



From the Georgia EIP Team to all of you for your many contributions to the Georgia EIP

We could not do it without you.



MSA Surveillance Staff and Contact Information 2018



Monica Farley, MD
EIP Principal
Investigator



Susan Ray, MD
EIP iSA Surveillance,
Prevalence Surveillance
Lead Investigator



Jesse Jacob, MD
EIP MuGSI/CRE Surveillance,
CRPA Surveillance
Lead Investigator



Evan Anderson, MD
EIP Influenza Surveillance,
RSV Surveillance
Lead Investigator



Sarah Satola, PhD
EIP Laboratory Director
(404) 727-2204
ssatola@emory.edu



Scott Fridkin, MD
EIP All *S. aureus* Surveillance
Lead Investigator
sfridki@emory.edu



Nora Oliver, MD
EIP Mold Surveillance
Lead Investigator
nora.thoa.oliver@emory.edu



Paulina Rebolledo, MD
EIP Investigator
preboll@emory.edu



Sheetal Kandiah, MD
EIP Investigator
sheetal.kandiah@emory.edu

Suzanne Segler, MPH
EIP Co-Director
(404) 321-6111 ext. 6492
ssegler@gaeip.org



Stepy Thomas, MSPH
EIP Co-Director
(404) 321-6111 ext. 6059
smthomas@gaeip.org

MSA Surveillance Staff and Contact Information 2018



Kyle Openo, MPH, DrPH (cand.)
Influenza/RSV Coordinator
(404) 321-6111 ext. 2530
kopeno@gaeip.org



Amy Tunali, MPH
ABCs Coordinator
(404) 321-6111 ext. 4652
akholst@gaeip.org



Andrew Revis, MPH, DrPH (cand.)
CDI Coordinator
(404) 321-6111 ext. 2256
arevis@gaeip.org



Chris Bower, MPH
MuGSI/CRE/CRPA Coordinator
(404) 321-6111 ext. 4087
cbower@gaeip.org



**Susan Morabit, RN, MSN,
PHCNS-BC, CIC**
Prevalence Coordinator
(404) 251-8728
smorabit@gaeip.org



Rahsaan Overton, MPH
iSA Coordinator
(404) 321-6111 ext. 3704
roverton@gaeip.org



Dana Goodenough, MPH
Pertussis Coordinator
(404) 321-6111 ext. 121743
dgoodenough@gaeip.org

Karelys Parada, MPH
FoodNet Coordinator
(404) 321-6111 ext. 4061
kparada@gaeip.org



Taylor Chambers, MPH
Mycotic Coordinator
(404) 321-6111 ext. 4322
tchambers@gaeip.org

MSA Surveillance Staff and Contact Information 2018



Lewis Perry, RN, BSN/HCW, MPH, DrPH, Surveillance Officer,
(404) 251-8727
lperry@gaeip.org



Sarah Witter, MPH
Surveillance Officer
(404) 321-6111 ext. 4596
switter@gaeip.org



Andrew Martin, MPH
Surveillance Officer
(404) 321-6111 ext. 121304
amartin@gaeip.org



Marissa Tracy, MPH cand
Surveillance Officer
(404) 321-6111 ext. 121741
mtracy@gaeip.org



Emily Fawcett, MPH
Surveillance Officer
(404) 321-6111 ext. 1394
efawcett@gaeip.org



Shanita Shack, MPH
Surveillance Officer
(404) 321-6111 ext. 7657
sshack@gaeip.org



Stephen Sukumaran, MPH
Surveillance Officer
(404) 321-6111 ext. 6478
ssukumaran@gaeip.org



Amelia Blumberg, MPH
Surveillance Officer
(404) 321-6111 ext. 4063
ablumberg@gaeip.org



Tori Dusse, MPH
Surveillance Officer
(404) 321-6111 ext. 6017
tdusse@gaeip.org



Rebekah Blakney, MPH
Surveillance Officer
(404) 321-6111 ext. 121742
rblakney@gaeip.org



Stacy Carswell, MPH
Surveillance Officer
(404) 321-6111 x4669
scarswell@gaeip.org



Minerva Mendez, MPH
Surveillance Officer
(404) 712-3275
mmendez@gaeip.org



Amber Britton, MPH
Surveillance Officer
(404) 712-3274
abritton@gaeip.org



**Jacqui Hurd, MPH
(NP Cand.)**
Surveillance Officer
jhurd@gaeip.org



**Sara Dunbar, MPH
(NP Cand.)**
Surveillance Officer
xxxx@gaeip.org

MSA Surveillance Staff and Contact Information 2018

Anna Smart
Assistant Surveillance Officer
(404) 321-6111 ext 122072
asmart@gaeip.org



Lois Sharpe
Assistant Surveillance Officer
(404) 321-6111 ext 122072
lsharpe@gaeip.org



**Vanessa da Costa,
MPH (cand.)**
Research Interviewer
vdacosta@gaeip.org



**Cymone Gates,
MPH (cand.)**
Research Interviewer
cgates@gaeip.org



**Camara Gregory,
MPH (cand.)**
Research Interviewer
cgregory@gaeip.org



**Jeremiah Williams,
MPH cand**
Research Interviewer
jwilliams@gaeip.org



**Kate Lengacher
MPH (cand.)**
Research Interviewer
klengacher@gaeip.org



**Jennifer Imaa
MPH (cand.)**
Research Interviewer
jimaa@gaeip.org



Michelle Hargita, BS
EIP Laboratory Assistant



Alex Page, BS
EIP Laboratory Assistant

GOA Surveillance Staff and Contact Information 2018



Cherie Drenzek, DVM, MS
State Epidemiologist
(404) 657-2609
Cherie.Drenzek@dph.ga.gov



Melissa Tobin-D'Angelo, MD, MPH
EIP Principal Investigator
Medical Epidemiologist
(404) 657-1105
Melissa.Tobin-Dangelo@dph.ga.gov



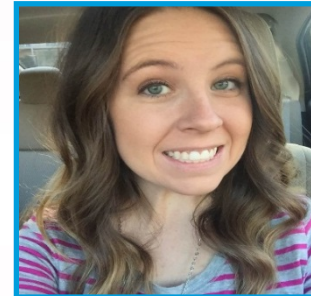
Jessica Tuttle, MD
Medical Epidemiologist
(404) 657-2553
Jessica.Tuttle@dph.ga.gov



Nadine Oosmanally, MSPH
EIP Coordinator
(404) 657-6445
Nadine.Oosmanally@dph.ga.gov



Ashley Moore, MPH, MS
ABCs Surveillance Coordinator
(404) 657-2643
Ashley.moore@dph.ga.gov



Bethany LaClair, MPH
FoodNet Coordinator
(404) 657-6436
Bethany.Laclair@dph.ga.gov



Siri Wilson, MPH
FoodNet Epidemiologist
(404) 463-4623
Siri.Wilson@dph.ga.gov



Lauren Lorentzson, MPH
HAI Epidemiologist
(404) 463-8919
Lauren.Lorentzson@dph.ga.gov



Jeanne Negley, MBA
HAI/AR Surveillance Director
(404) 657-2593
Jeanne.Negley@dph.ga.gov



Audrey Kunkes, MPH
Influenza Coordinator
(404) 463-4625
Audrey.Kunkes@dph.ga.gov



Ebony Thomas, MPH
VPD Epidemiologist
(404) 463-0781
Ebony.Thomas@dph.ga.gov

GOA Surveillance Staff and Contact Information 2018



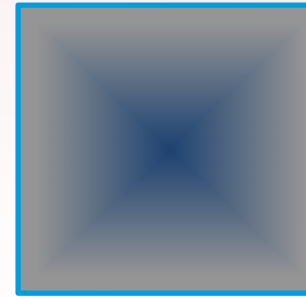
Tonya Johnson, BS
Surveillance Officer
(404)-657-7309
Tonya.Johnson@dph.ga.gov



Charletta Cloud, MA
Surveillance Officer
(404) 463-2742
Charletta.Cloud@dph.ga.gov



Velesia Peart, MBA
Surveillance Officer
(404) 657-4098
Velesia.Peart@dph.ga.gov



Hope Dishman, MPH
Outbreak Coordinator
(404) 463-4626
Hope.Dishman@dph.ga.gov



Liz Hannapel, MPH
ELC Flexible Epidemiologist
(404) 463-8908
Elizabeth.Hannapel@dph.ga.gov



Lana Jones, MPH
Salmonella Epidemiologist
(404) 463-4624
Lana.Jones@dph.ga.gov



Matt Cole, MPH
Legionella Epidemiologist
(404) 463-9418
Matthew.Cole@dph.ga.gov



Emily Ananthset
Professional Healthcare Worker
Emily.Ananthset@dph.ga.gov

Joe Gerth
Professional Healthcare Worker
Joseph.Gerth@dph.ga.gov

Sam Rock
Professional Healthcare Worker
Samuel.Rock@dph.ga.gov

Davelle Heath
Professional Healthcare Worker
Davelle.Heath@dph.ga.gov

Meaghan Peterson
Professional Healthcare Worker
Meaghan.Peterson@dph.ga.gov