



*Georgia Department of Public Health*

# **NACDD White Paper: Calling for “Progress in Health”**

**Jean O’Connor, JD, MPH, DrPH  
Chronic Disease Prevention Director  
Georgia Department of Public Health**



*We Protect Lives.*

# Learning Objectives

1. Explain the NACDD White Paper ***Progress in Health- It's Time to Get Serious about Preventing Chronic Disease***
2. Provide examples of specific data and programs related to chronic disease prevention in Georgia
3. Identify opportunities to reduce the burden of Chronic Disease in Georgia

“Worldwide, HIV, **TOBACCO, ALCOHOL, OBESITY** & WAR are the only big causes of death that have increased substantially since 1990 in some large populations, after allowing for population growth.”

-Sir Richard Peto

Source:<https://rfs1.fhb.gov.hk/images/events/HPS2014/Prof%20Sir%20Richard%20Peto-.pdf>

# Overview of White Paper

Aimed at policy makers

Places the US and its outcomes in context (37<sup>th</sup>)

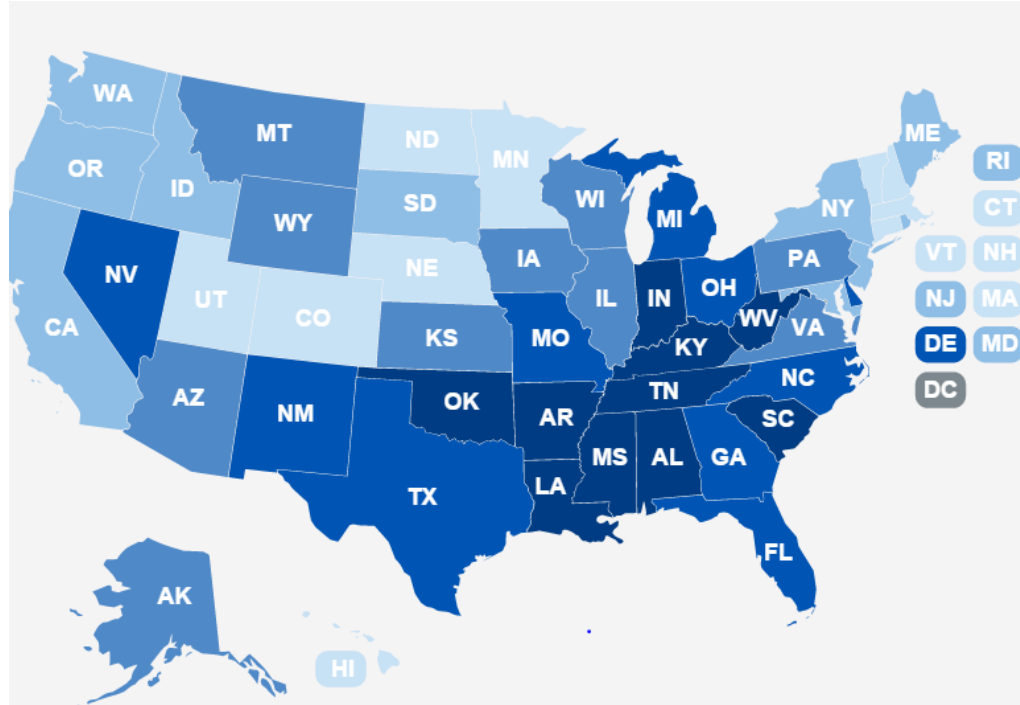
Outlines the NCD burden in the US

Calls for change

Calls for scale in prevention programs

Makes the case for shared federal-state engagement

Gives specific examples

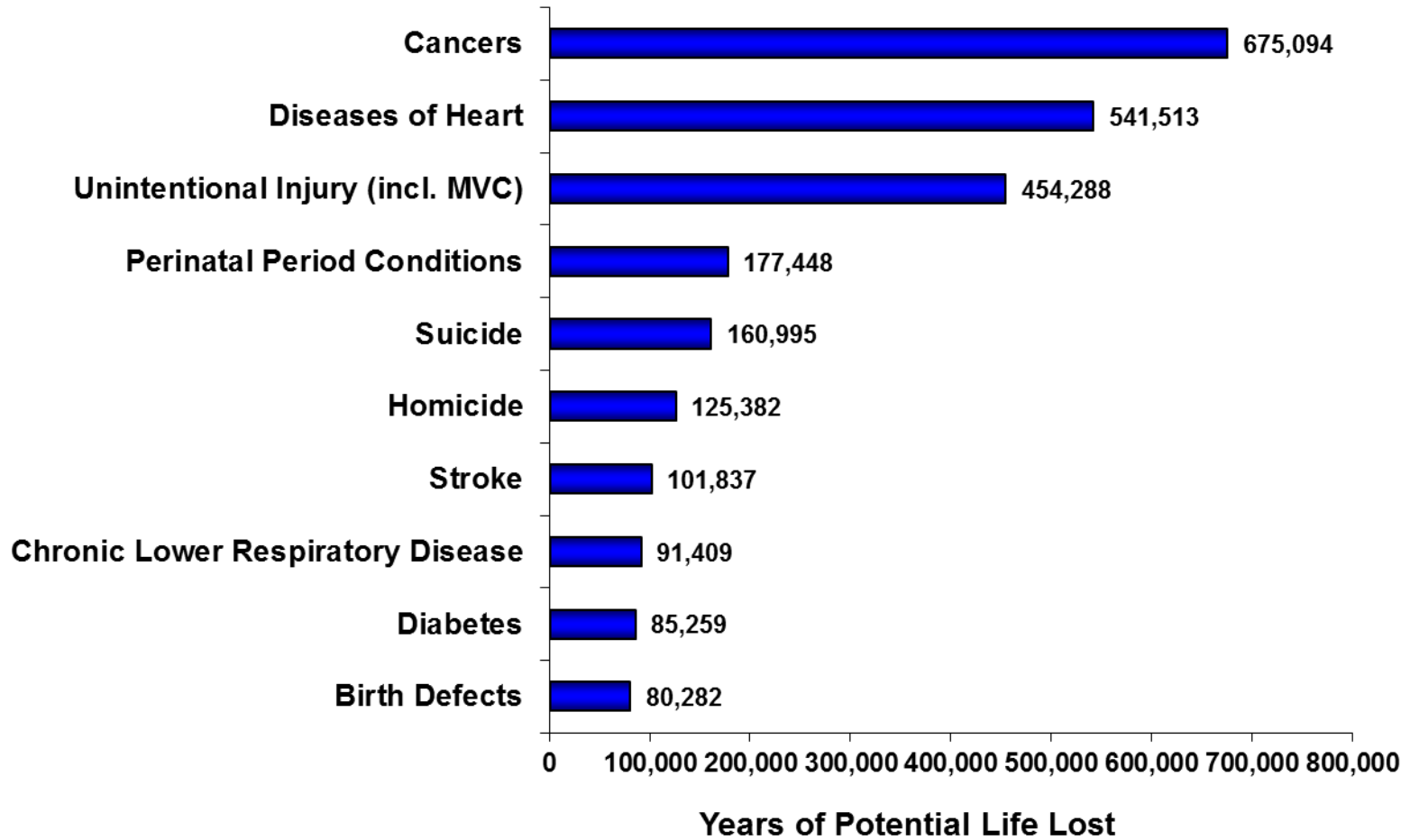


## America's Health Rankings—Georgia, 2014

<b>Overall</b>	<b>38</b>
<b>Children in Poverty</b>	<b>37</b>
<b>HS Graduation Rate</b>	<b>48</b>
<b>Income Disparity</b>	<b>44</b>
<b>Lack of Health Insurance</b>	<b>46</b>
<b>Underemployment</b>	<b>44</b>
<b>Unemployment</b>	<b>42</b>

# Leading Causes of Premature Deaths (before age 75), Georgia

## Years of Potential Life Lost 2009-2013



*We Protect Lives.*

\* Cause categories are the National Centers for Health Statistics (NCHS), rankable causes of deaths applied to Georgia.

Source: Georgia Department of Public Health, Office of Health Indicators for Planning (OHIP), OASIS Dashboard. <http://oasis.state.ga.us/>

# Tobacco Burden in Georgia

**17.4% (1.24 million) adults smoke cigarettes in Georgia**

## Adults

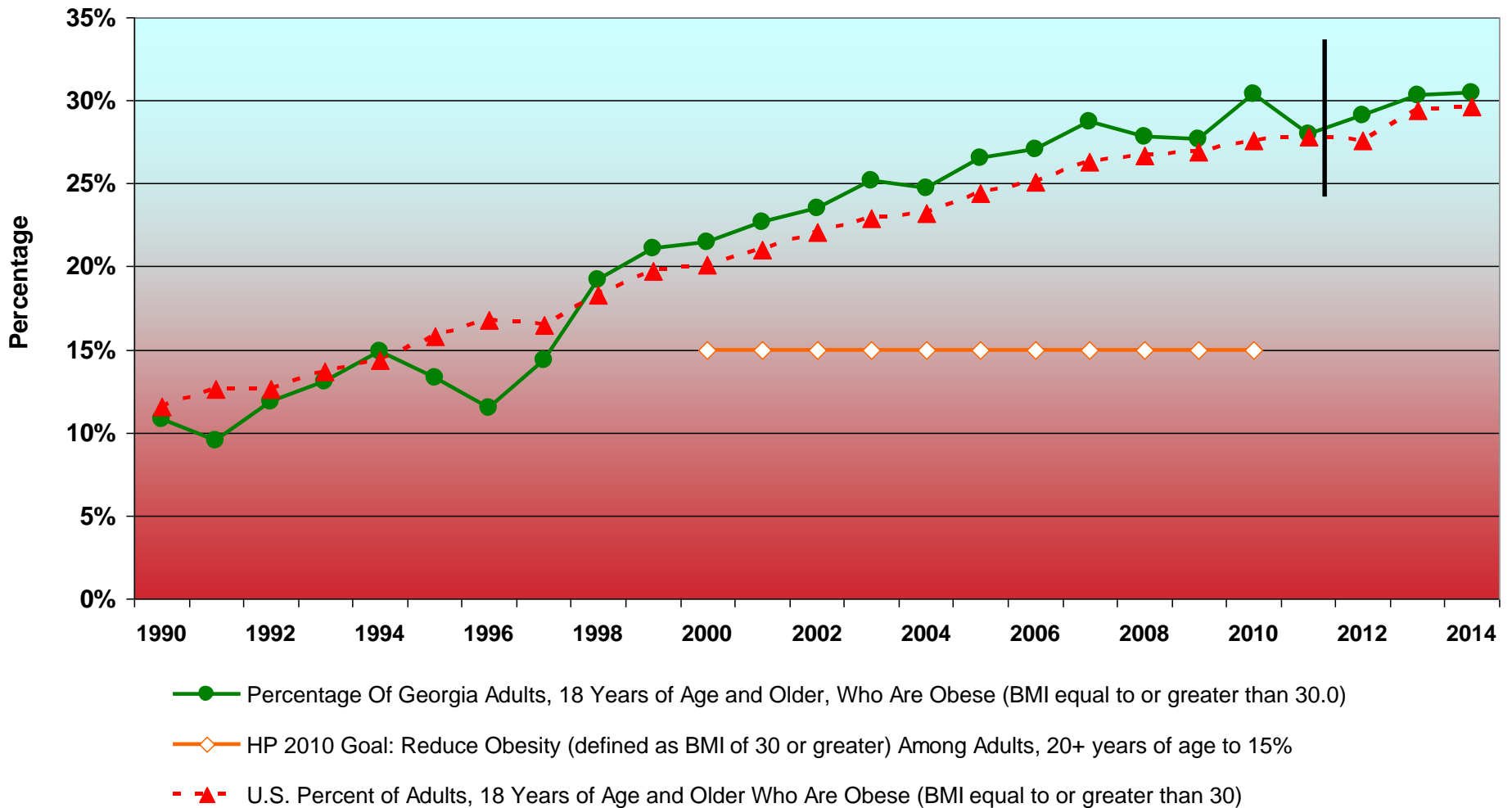
- Gender: Males 740,000 (21.4%)  
Females 510,000 (13.6%)
- Race: White 785,000 (19.3%), Black 301,000 (14.6%), Hispanic 92,000 (15.6%)
- Age 25-34: 292,000 (23.5%)
- Income <\$15,000: 275,000 (33.5%)
- Education <high school: 365,000 (31.8%)
- No health coverage: 455,000 (31.4%)
- Geography: Gainesville 88,000 (23.9%), Columbus 63,000 (22.8%), Rome 97,000 (22.3%)

## Youth

- Gender: HS Males 28,000 (14%), HS Females 25,000 (12%); MS Males 8,300 (5%), MS Females 6,200 (4%)
- Cigarettes
  - Middle School: 14,000 (4%)
  - High School: 53,000 (13%)
- Smokeless
  - Middle School: 13,000 (4%)
  - High School: 42,000 (9%)
- Electronic Cigarettes
  - Middle School: 32,000 (8%)
  - High School: 73,000 (16%)
- Race: Whites 36,000 (19%), Hispanics 5,000 (13%), Blacks 8,000 (5%)

<http://dph.georgia.gov/tobacco>

## Percentage of Adults 18 Years of Age and Older, who are Obese, U.S. and Georgia, 1990-2014

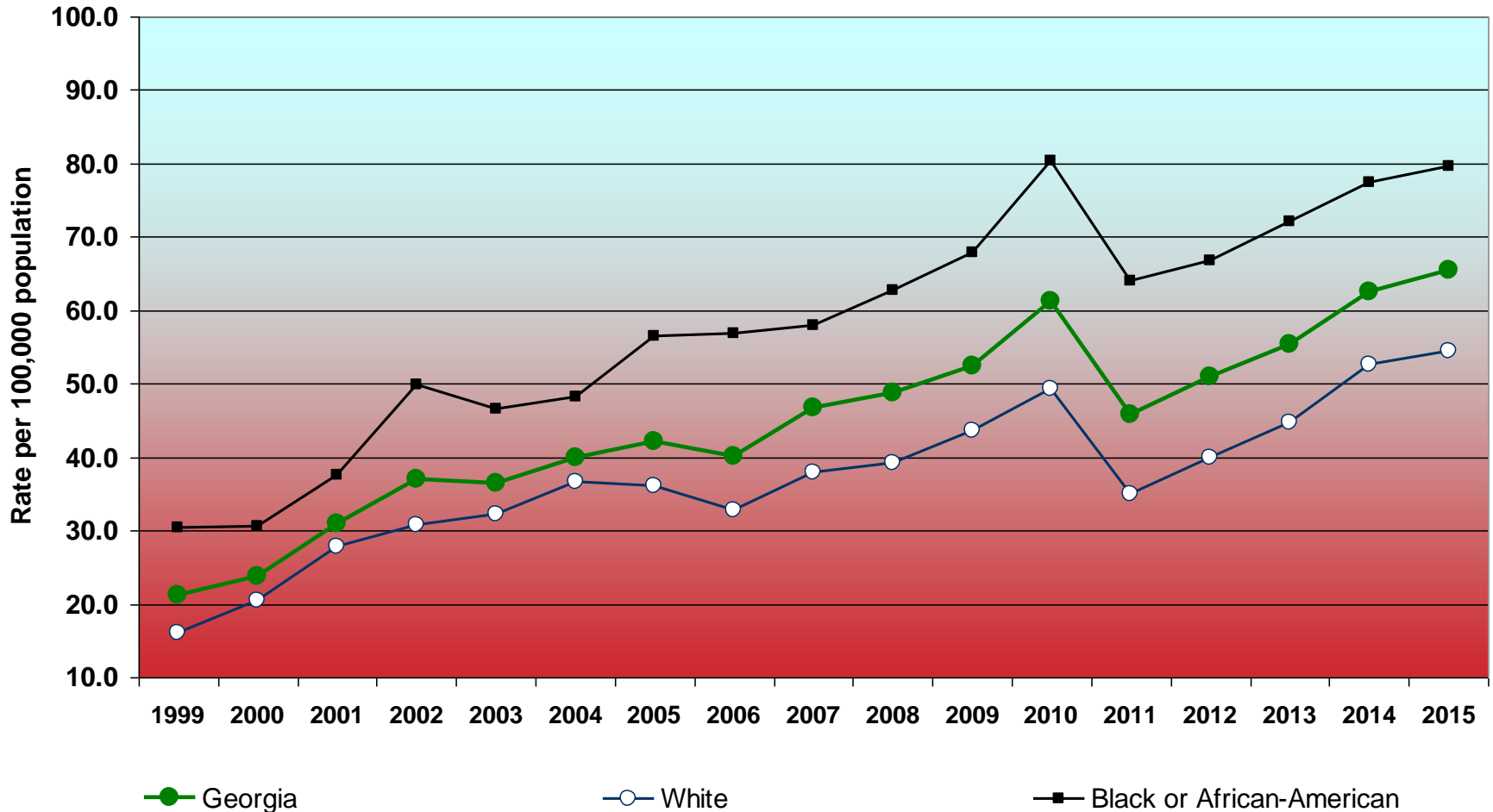


Data after 2010 are not comparable with prior years

Obesity is self-reported. Body Mass Index (BMI) is measured as weight in kilograms/height in meters



## Age-specific Rate of Obesity/Overweight-related Hospitalizations, 2-19 Years of Age, Georgia, by Race, 1999-2015



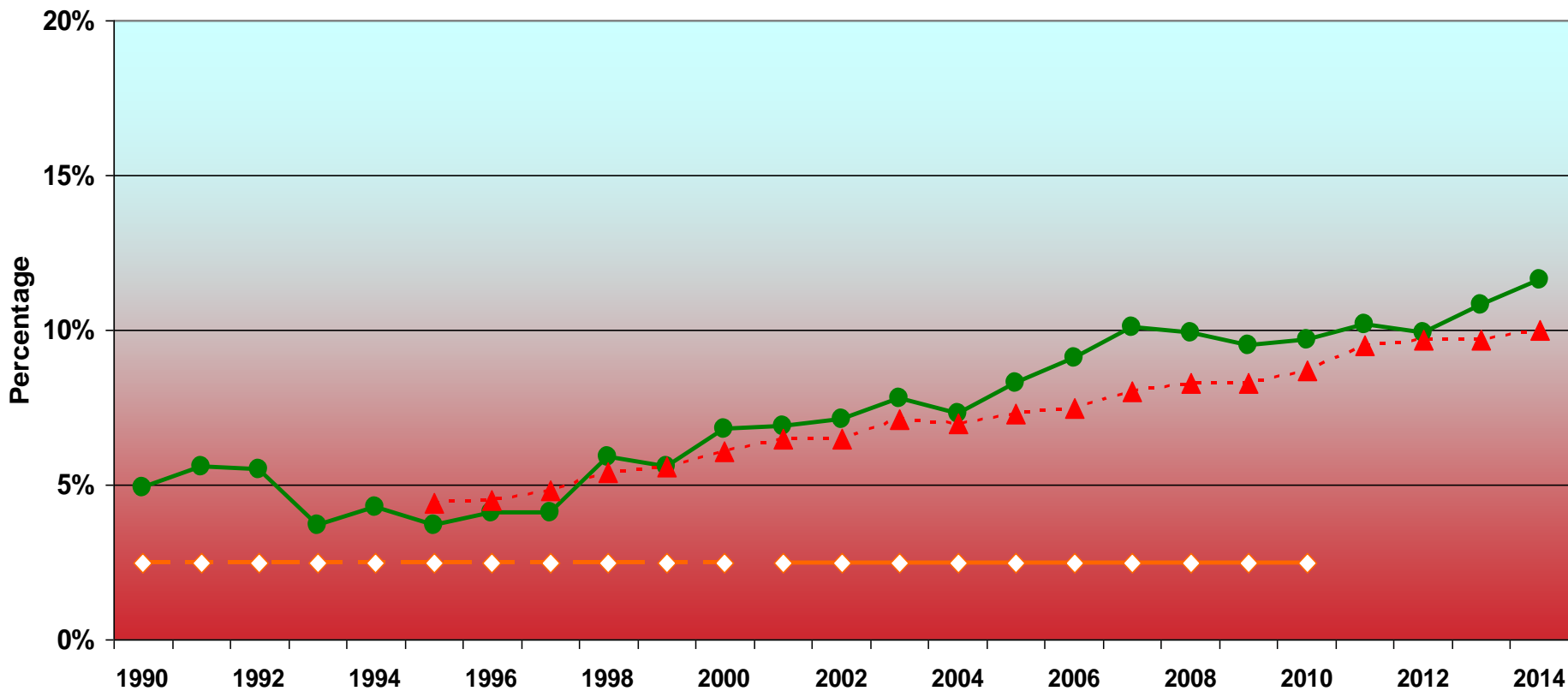
**Definition:** Obesity/Overweight-related hospitalization is defined as the hospital discharge where any one of the codes listed below was present in either the primary or other contributing cause.

ICD-9 Codes: 278.0, 278.0[0-2], 278.1, 278.8, V85.2[1-5], V85.3[0-9], V85.4[1-5], V85.5[3-4] (before 10/1/15).

ICD-10 Codes: E66.[0-3,9], E65, E67.8, Z68.2[5-9], Z68.3[0-9], Z68.4[1-5], Z68.5[3-4] (10/1/15 and after).

*We Protect Lives.*

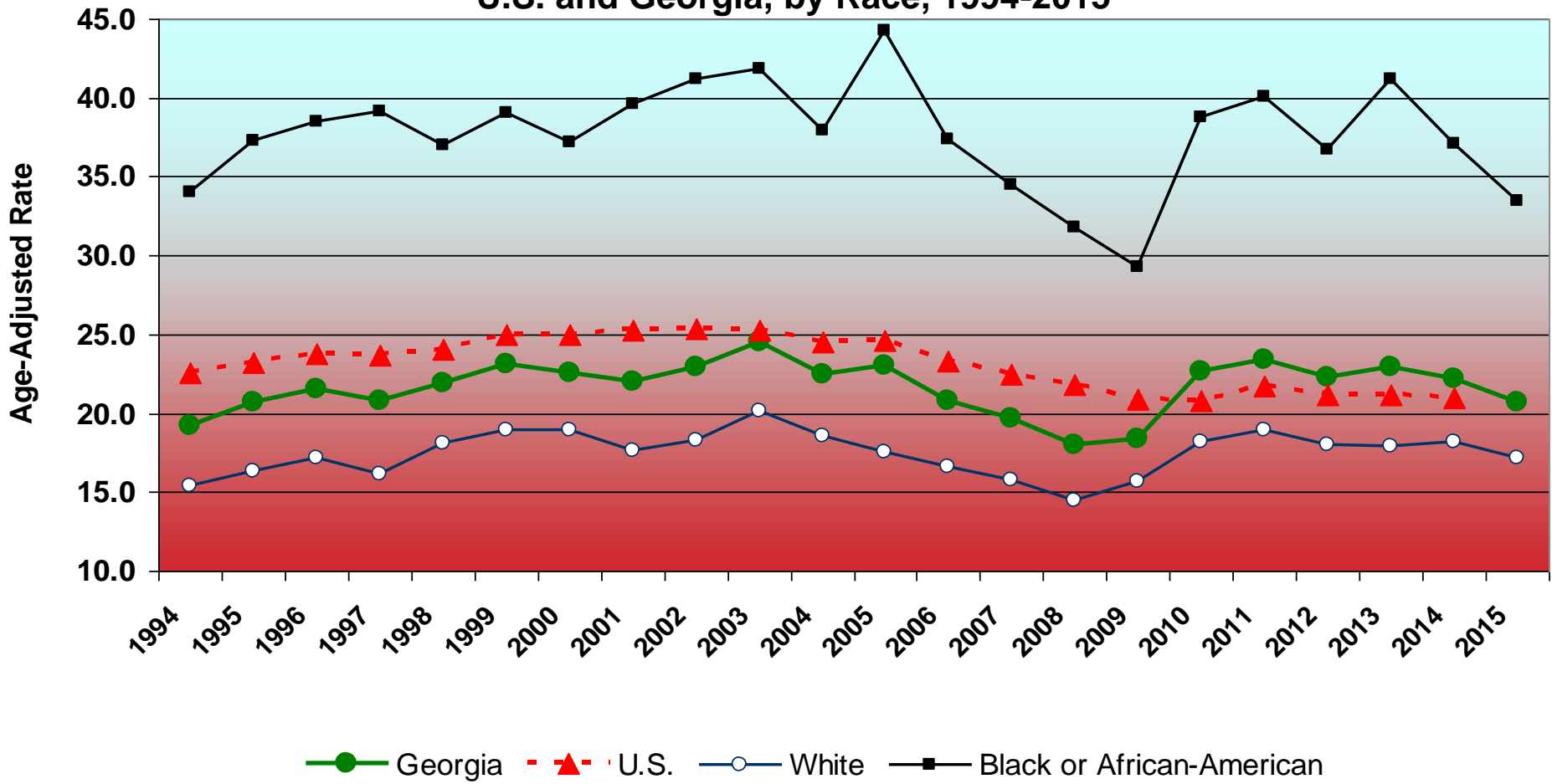
# Percentage of Adults 18 Years of Age and Older who have Diabetes, U.S. and Georgia, 1990-2014



- ◇— Healthy People 2010: Reduce the overall rate of diabetes that is clinically diagnosed no more than 25 per 1,000 people (2.5%)
- Percentage Georgia Adults 18+, Who Have Ever Been Told by a Doctor They Have Diabetes (self reported)
- ◇— Healthy People 2000 : Reduce diabetes to an incidence of no more than 25 per 1,000 people (2.5%)
- - -▲- - - U.S.

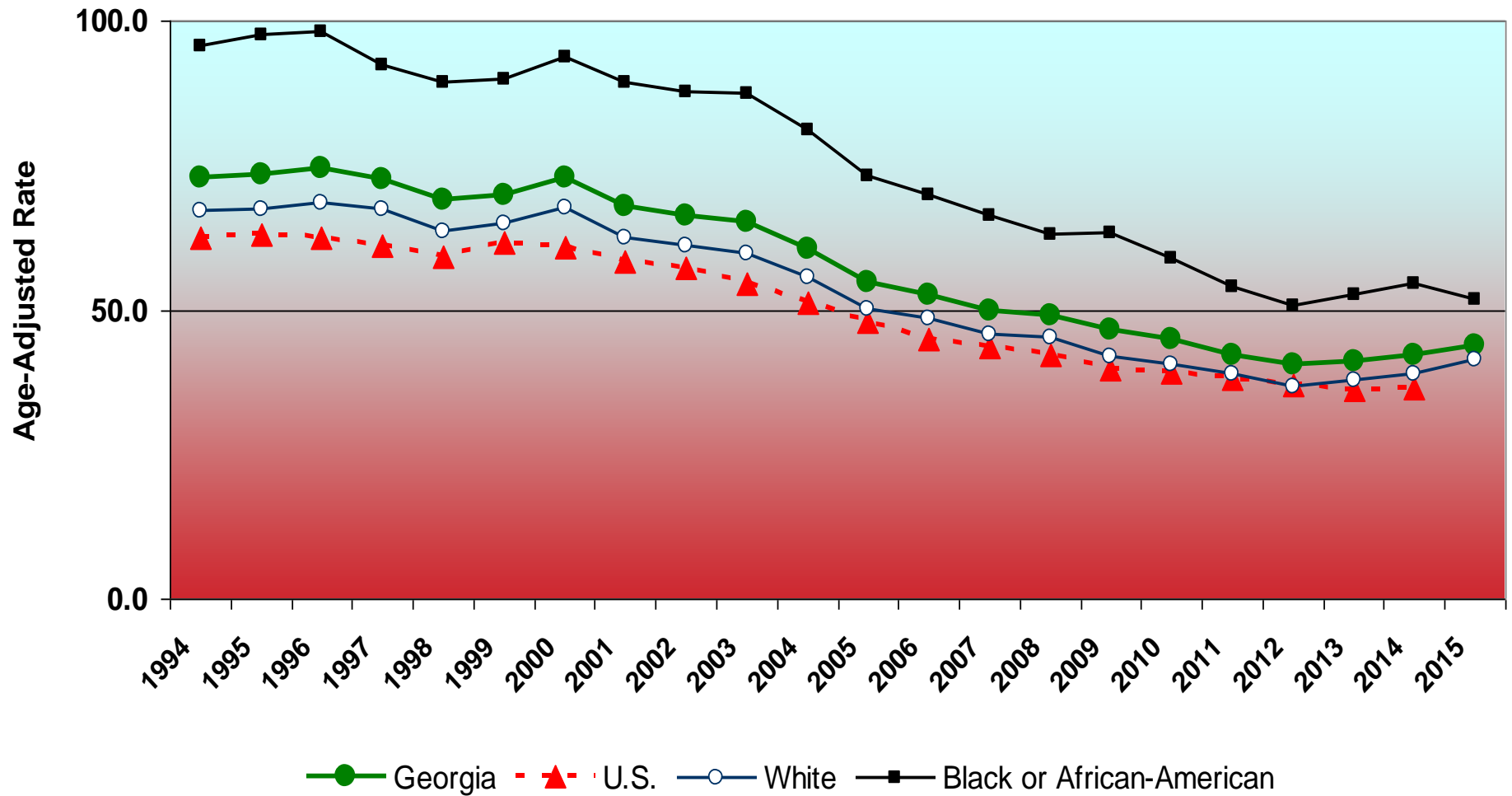
Source: Centers for Disease Control and Prevention (CDC). *Behavioral Risk Factor Surveillance System Survey Data*. Atlanta, Georgia: U.S. Department of Health and Human Services, Centers for Disease Control and Prevention, 2011-2013 (accessed January 28, 2015). <http://apps.nccd.cdc.gov/brfss/>

## Age-Adjusted Diabetes Mortality Rates, U.S. and Georgia, by Race, 1994-2015



<sup>1</sup>Age-Adjusted to the 2000 Standard Million.

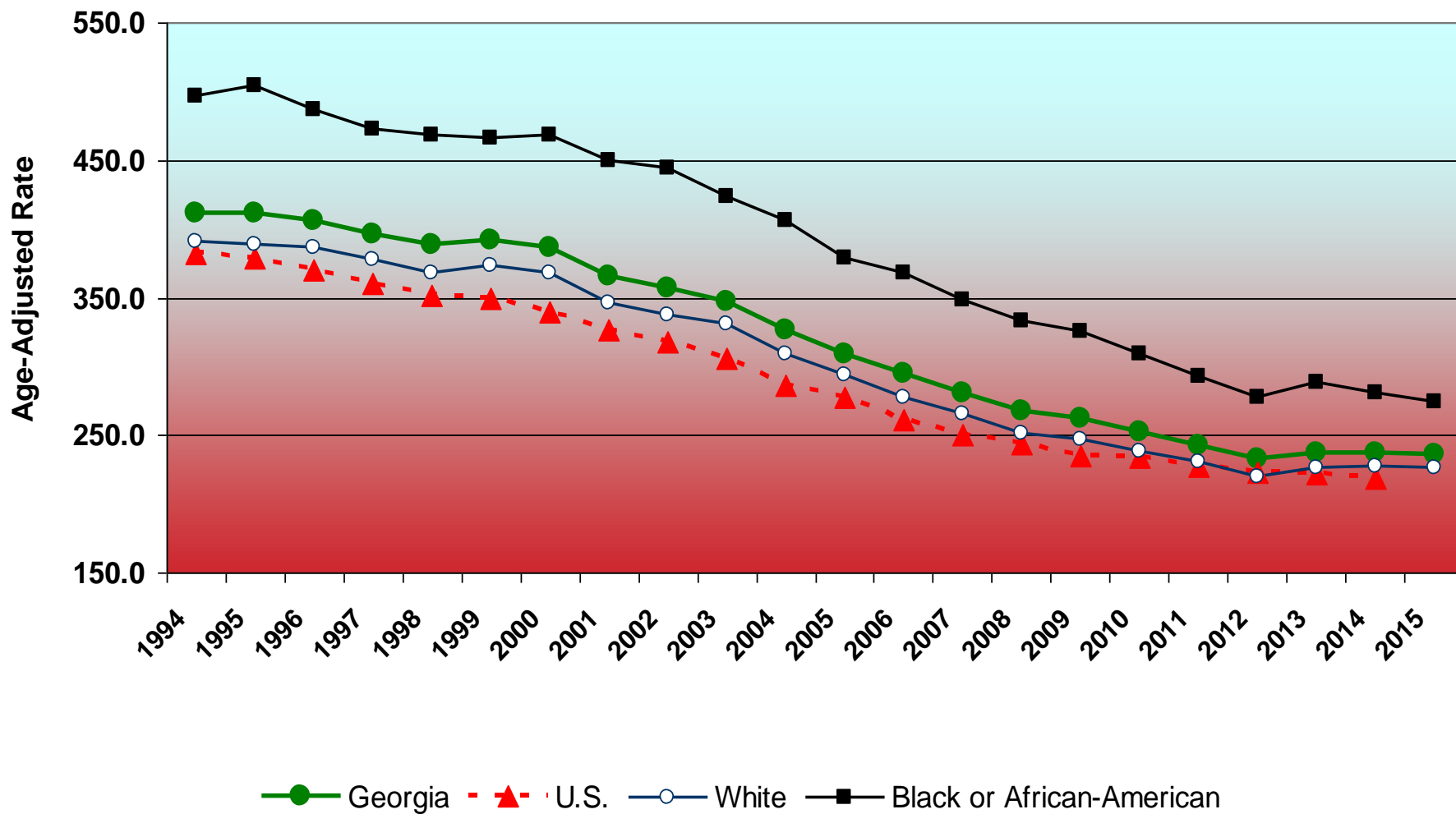
## Age-Adjusted Stroke Mortality Rates, U.S. and Georgia, by Race, 1994-2015



<sup>1</sup>Age-Adjusted to the 2000 Standard Million.  
Stroke = ICD I60-I69 (ICD9 430-434, 436-438)

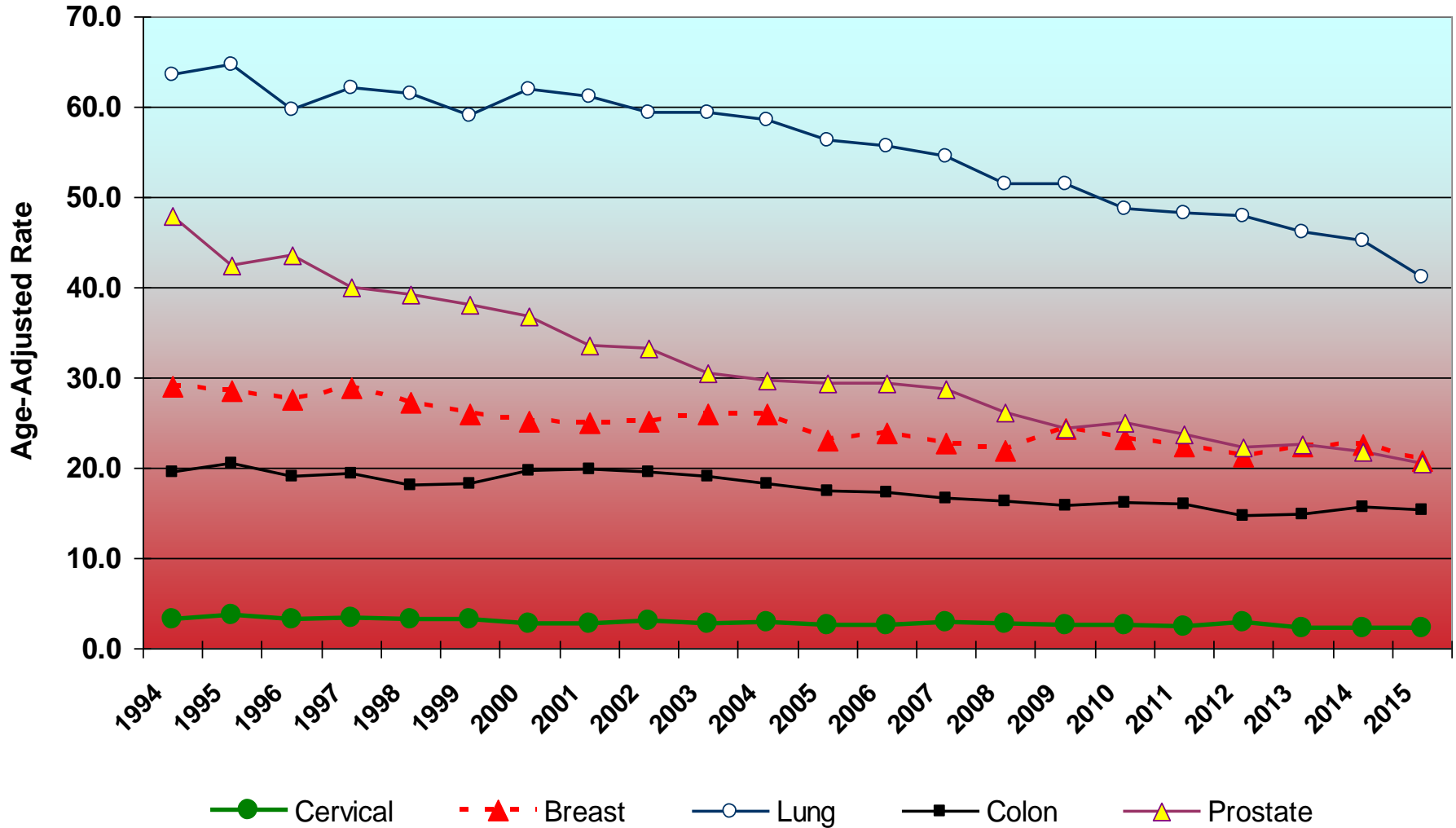
Sources: Centers for Disease Control & Prevention, CDC WONDER, <http://wonder.cdc.gov/>  
Online Analytical Statistical Information System (OASIS). Georgia Department of Public Health, Office of Health Indicators for Planning (OHIP). <http://oasis.state.ga.us/>

## Age-Adjusted Cardiovascular Mortality Rates, U.S. and Georgia, by Race, 1994-2015



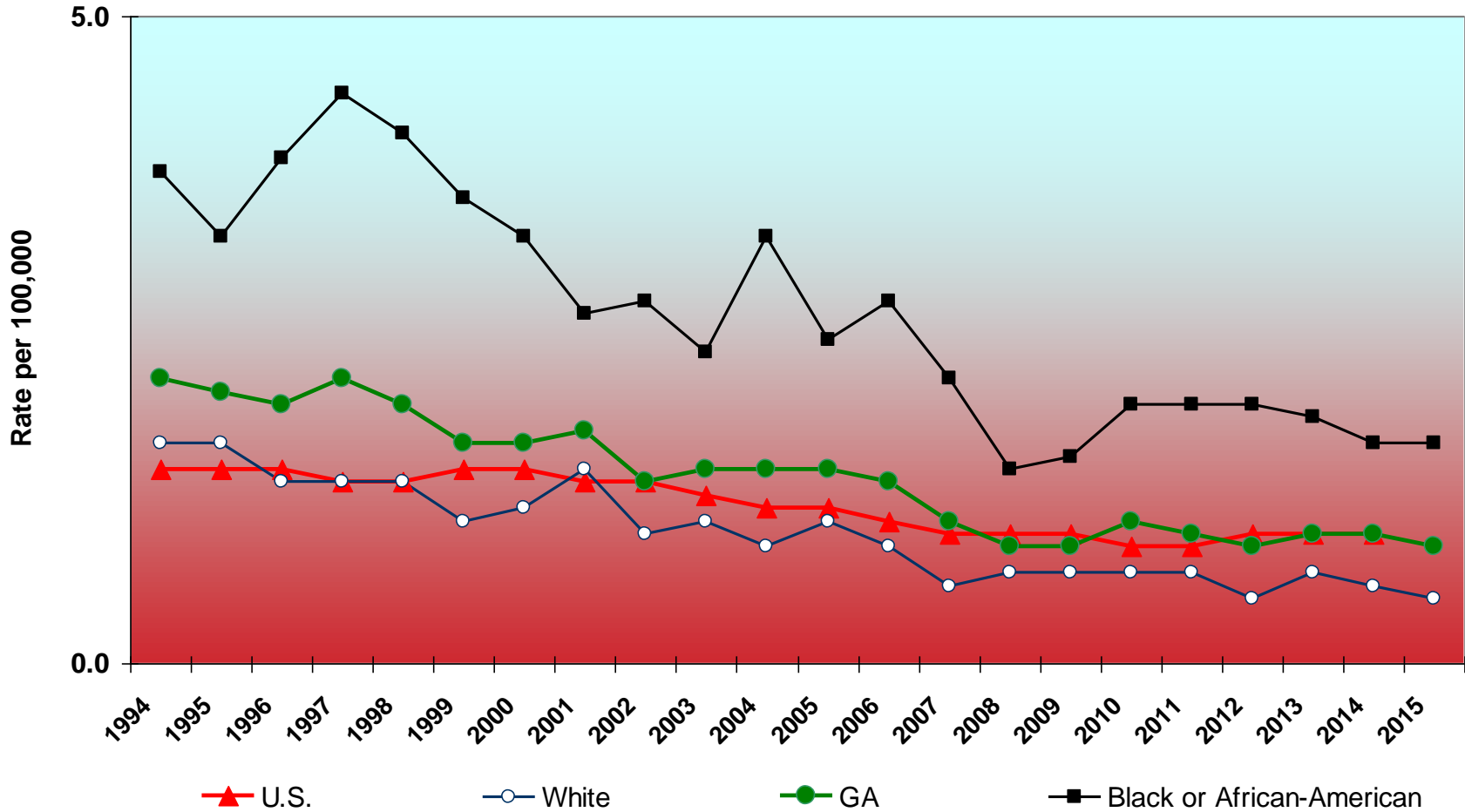
<sup>1</sup>Age-Adjusted to the 2000 Standard Million.  
Cardiovascular = ICD10 I00-I78 (ICD9 390-434, 436-448)

## Age-Adjusted Cancer Mortality Rates, Georgia, 1994-2015

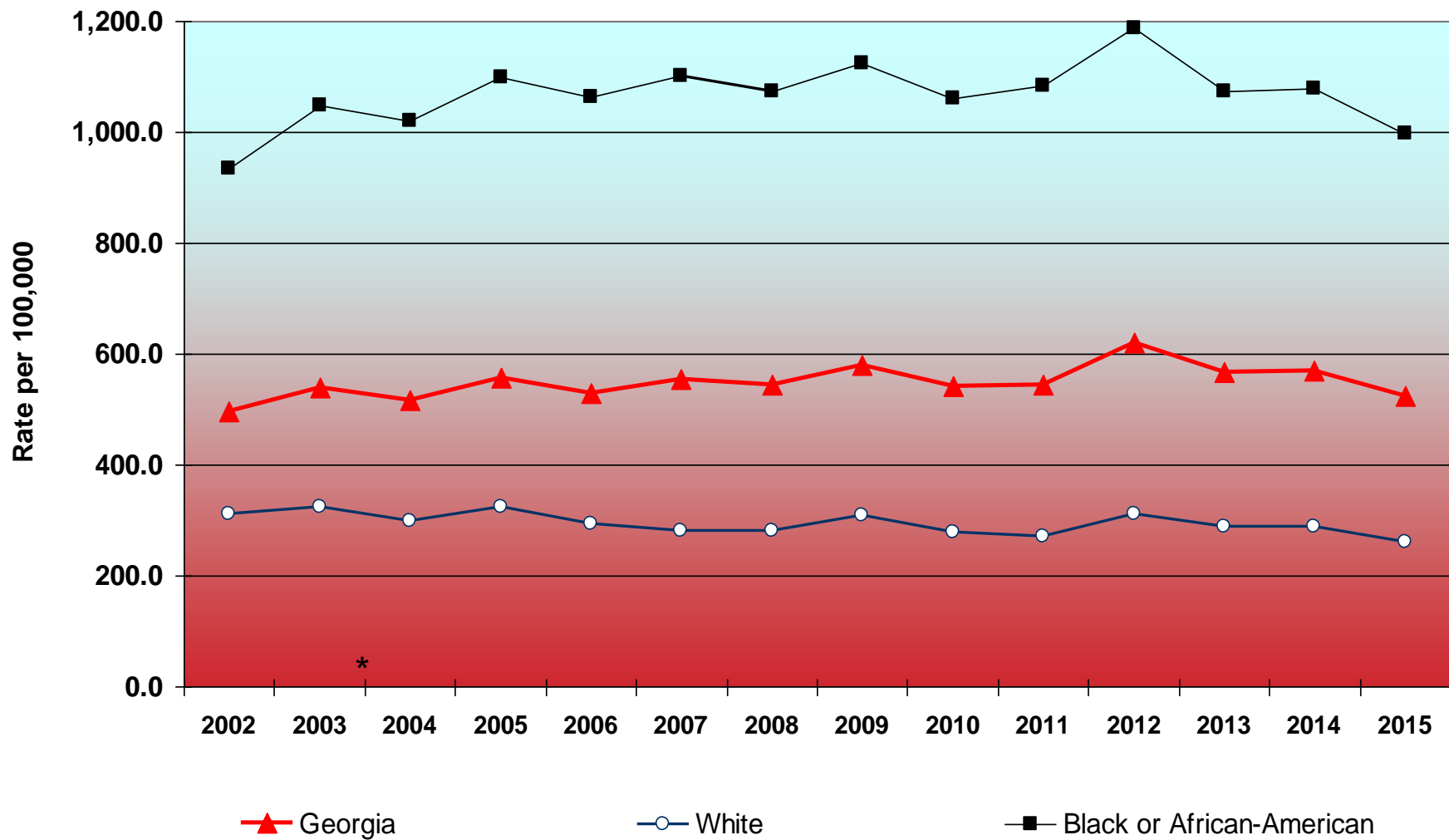


<sup>1</sup>Age-Adjusted to the 2000 Standard Million. Sex-specific causes have sex-specific denominators.

# Age-Adjusted Asthma Mortality Rates, U.S. and Georgia, by Race, 1994-2015



# Age-Adjusted Asthma Emergency Room Visit Rates, Georgia, by Race, 2002-2015



Please note: the last quarter of 2015 reflect a switch from icd9 to icd10 codes. Trends may be affected.

*We Protect Lives.*



# CDC Health Impact Pyramid

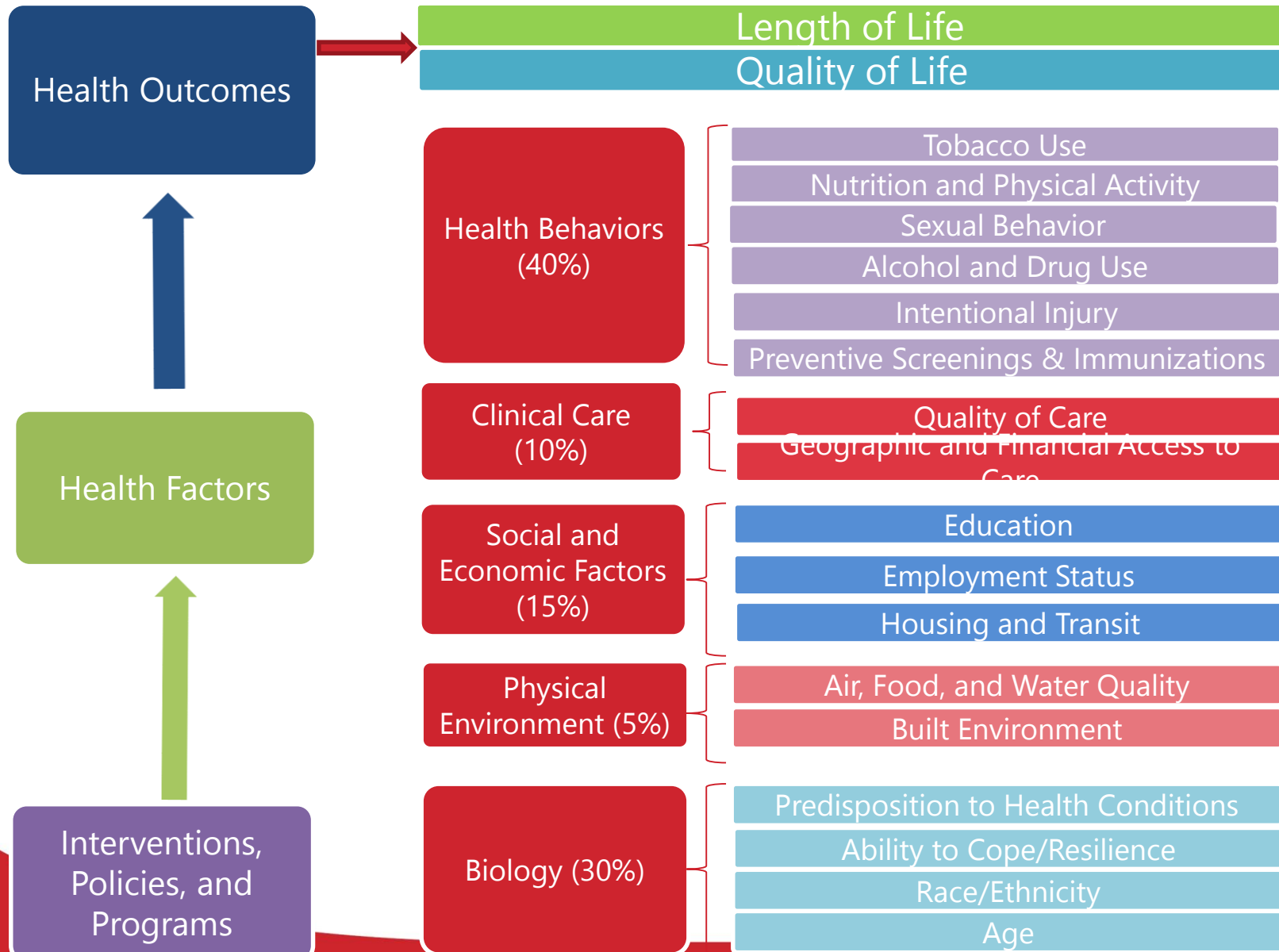
## Factors that Affect Health



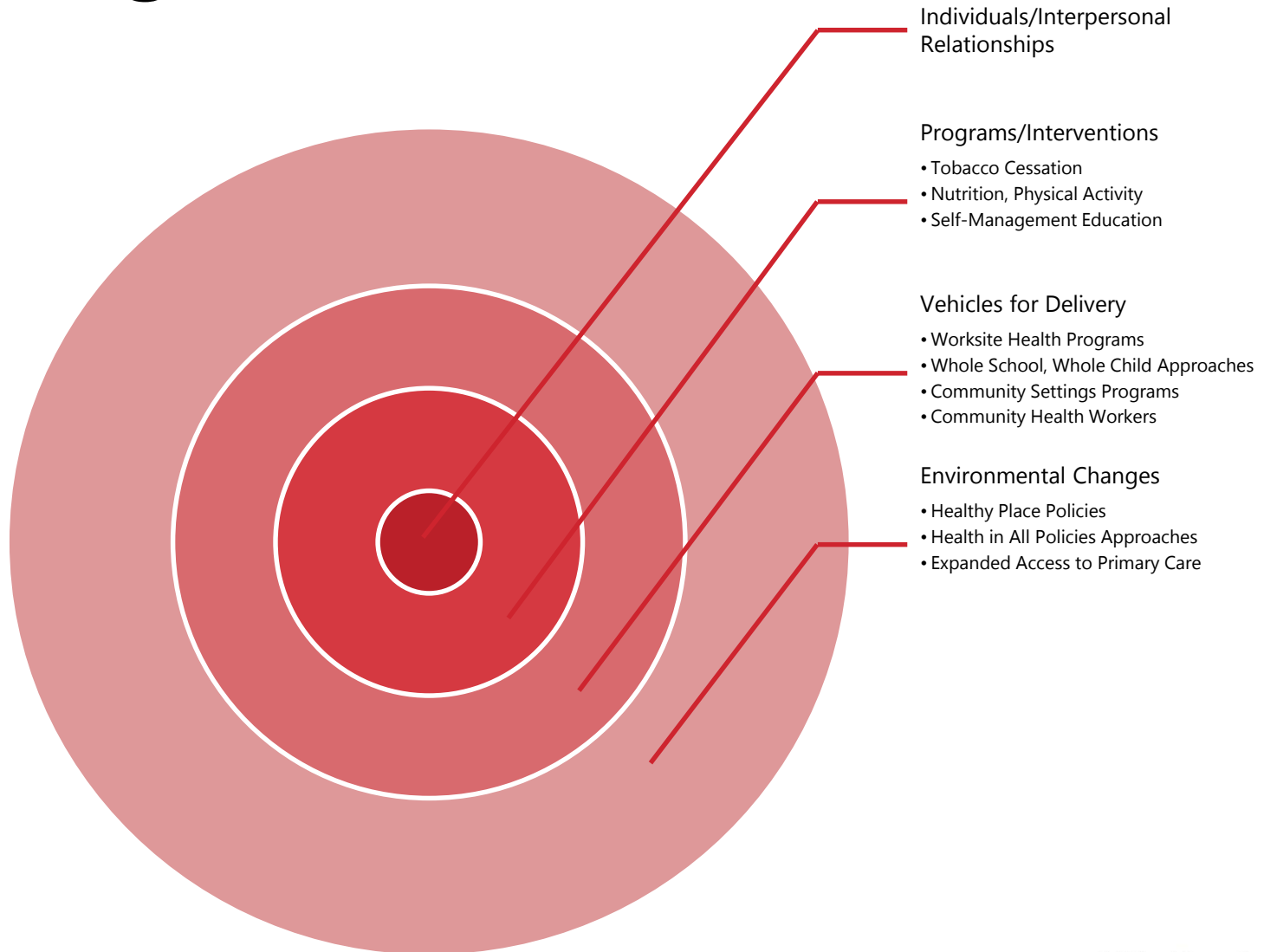
Check the Tarrant County Public Health Web site to learn more.  
<http://health.tarrantcounty.com>



# Georgia Department of Public Health Population Health Outcome Model



# Georgia NCD Investments Needed



# Resources for Identifying Interventions



Georgia Department of Public Health

[www.dph.ga.gov](http://www.dph.ga.gov)



Community Guide to Preventive Services

<http://www.thecommunityguide.org/>



US Preventive Services Task Force

<http://www.uspreventiveservicestaskforce.org/>



Six-Eighteen Initiative (or HI-FIVE)

<http://www.cdc.gov/sixeighteen/>

## **Contact Information**

**Jean O'Connor, JD, DrPH**  
**Georgia Department of Public Health**  
**2 Peachtree Street, NW, 16th Floor**  
**Atlanta, Georgia 30303**  
**Email: [Jean.Oconnor@dph.ga.gov](mailto:Jean.Oconnor@dph.ga.gov)**  
**Phone: 404-54-5274**

**DPH online: [www.dph.ga.gov](http://www.dph.ga.gov)**  
**DPH on Facebook: [www.facebook.com/GaDPH](http://www.facebook.com/GaDPH)**  
**DPH on Twitter: [www.twitter.com/GaDPH](http://www.twitter.com/GaDPH)**