



# Georgia Weekly Influenza Report

Updated 2/8/2019

## Week 05 (January 27 — February 2, 2019)

### Snapshot of Influenza Activity During Week 05:

- **Outpatient Illness Surveillance (ILINet):** The proportion of outpatient visits for ILI was **5.0%**, which is **ABOVE** the regional baseline of 2.2%
- **Activity Indicator Map:** HIGH
- **Geographic Spread of Influenza:** WIDESPREAD
- **Influenza-associated Deaths:** 1 death were confirmed
- **Metro Area Hospitalizations:** 35 hospitalizations were reported
- **Influenza Outbreaks:** 3 outbreaks were reported
- **Viral Surveillance:** The percent of specimens testing positive for influenza by clinical laboratories was 12%
- **RSV Season Status:** **ON**

### Summary of Select Influenza Surveillance Measures

	Week 05	Cumulative Data since September 30, 2018 (Week 40)
No. of Influenza-associated Deaths	1	9
No. of Metro Area Influenza Hospitalizations	35	947
No. of Influenza Outbreaks	3	36

Contact: [Audrey.Kunkes@dph.ga.gov](mailto:Audrey.Kunkes@dph.ga.gov) or (404) 463-4625

GA DPH on the web!  
<http://dph.georgia.gov/>

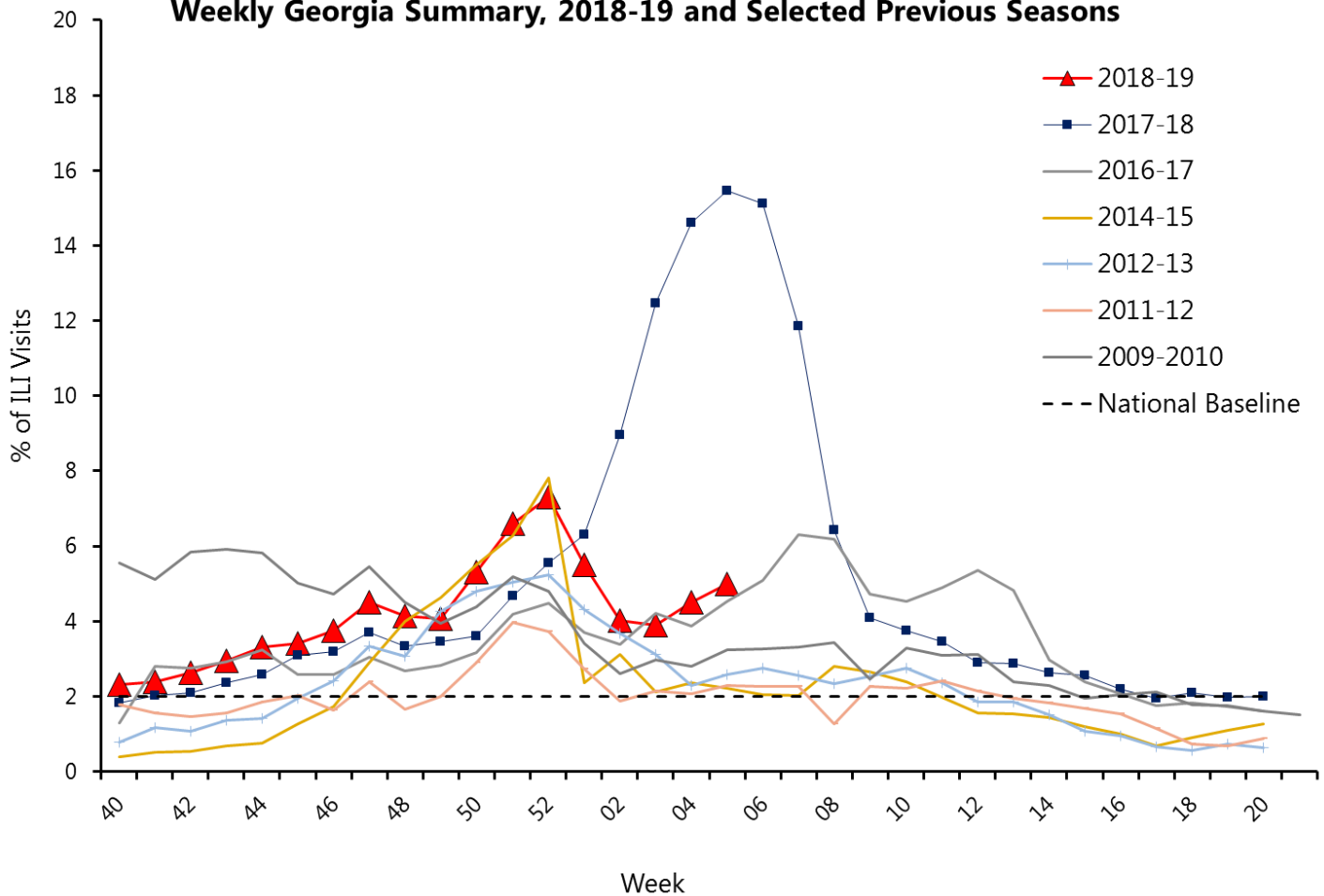
## Outpatient Illness Surveillance

In Georgia during week 05, 5.0% of patient visits reported through the U.S. Outpatient Influenza-like Illness Surveillance Network (ILINet) were due to influenza-like illness (ILI). The percentage is above the regional baseline of 2.2%. (ILI is defined as fever (temperature of 100°F [37.8°C] or greater) and cough and/or sore throat.)

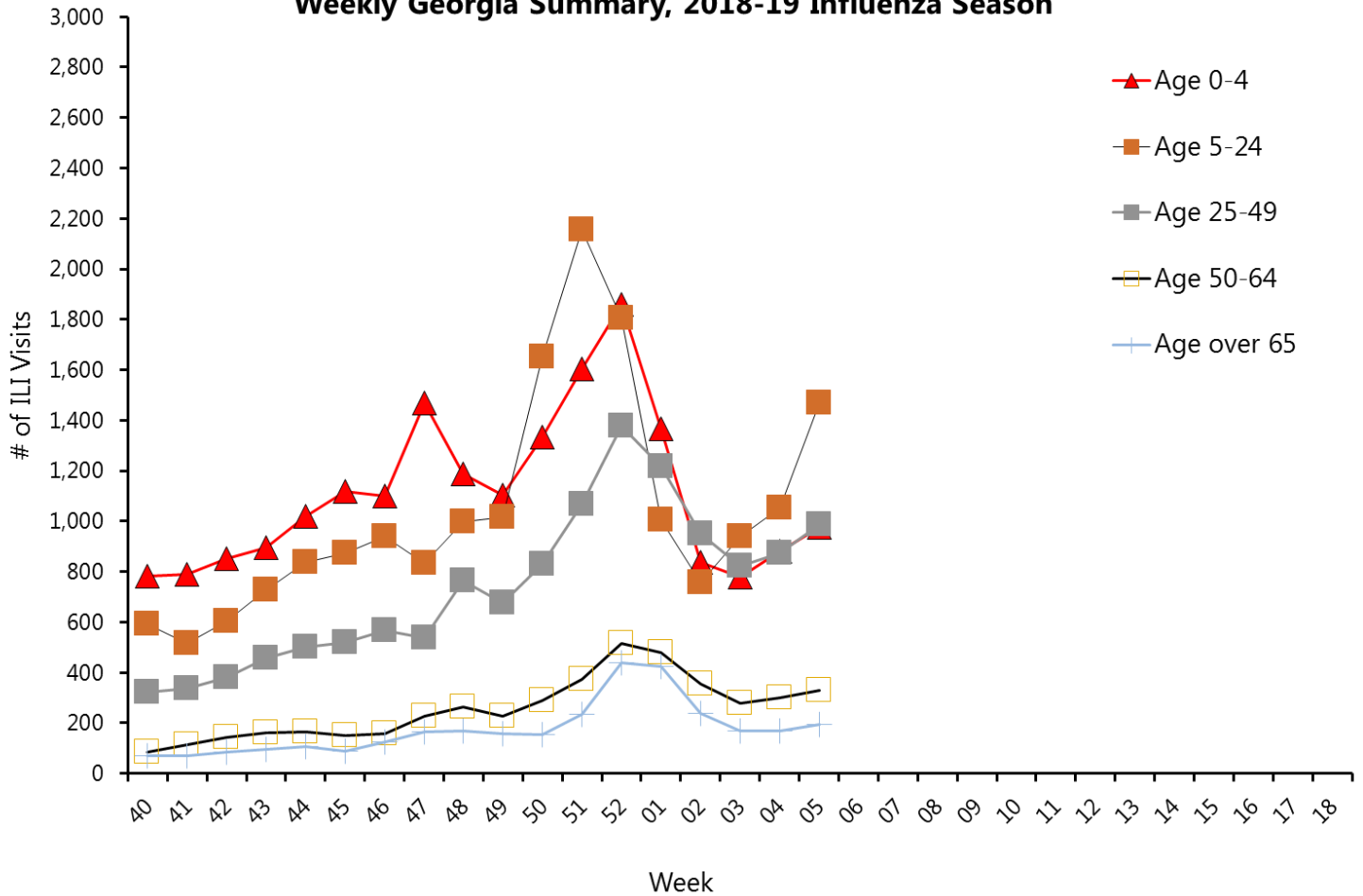
A total of 96 sentinel providers reported data for week 05.

Note: The regional baseline is formulated by averaging ILI percentage during weeks of endemic activity determined by laboratory results for influenza. HHS Region 4 (AL, FL, GA, KY, MS, NC, SC, and TN) (Baseline: 2.2%).

**Percentage of Visits for Influenza-like Illness (ILI) Reported by the Outpatient Influenza-like Illness Surveillance Network (ILINet), Weekly Georgia Summary, 2018-19 and Selected Previous Seasons**



### Number of Visits for Influenza-like Illness (ILI), by Age, Reported by the Outpatient Influenza-like Illness Surveillance Network (ILINet), Weekly Georgia Summary, 2018-19 Influenza Season



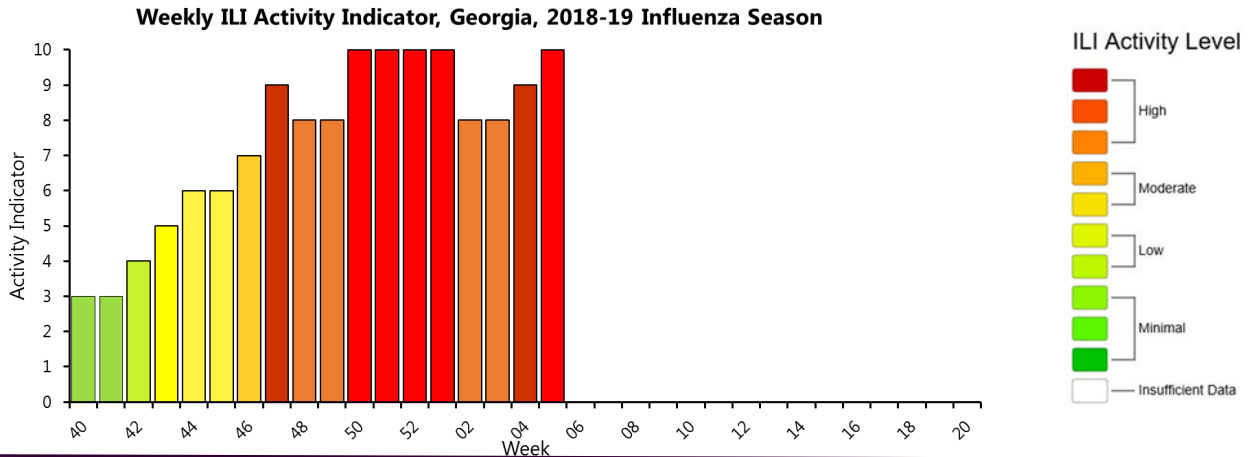
### Summary of ILI, by Age, Reported to ILINet, Weekly Georgia, 2018-19 Influenza Season

Age Group in Years	No. of ILI Visits (Week 05)	Cumulative Data since September 30, 2018 (Week 40)
0-4	977	20,373
5-17	1,468	19,237
18-49	988	13,495
50-64	329	4,729
65+	195	3,230
<b>Total</b>	<b>3,957</b>	<b>61,064</b>

## ILI Activity Indicator

ILI Activity Levels measure ILI activity each week. Activity levels are based on the percent of outpatient visits in Georgia due to ILI compared to the 3 year average of ILI visits during weeks with little or no influenza virus circulation.

During week 05, the activity level in Georgia was **HIGH = 10**

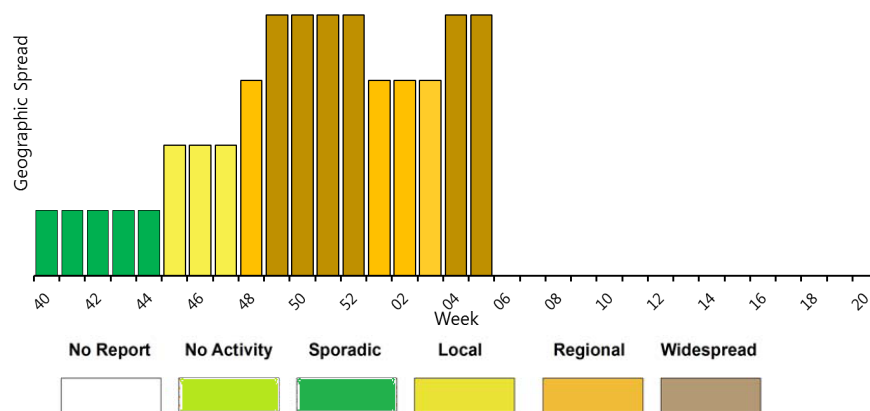


## Geographic Spread of Influenza

Geographic spread is measured weekly and reflects geographic dispersion of influenza and is not an indicator of influenza severity.

During week 05, the geographic spread of influenza in Georgia was **WIDESPREAD**

**Weekly Influenza Activity Estimates of Geographic Spread, Georgia, 2018-19 Influenza Season**



- No Activity:** No laboratory-confirmed cases of influenza and no reported increase in the number of cases of ILI.
- Sporadic:** Small numbers of laboratory-confirmed influenza cases or a single laboratory-confirmed influenza outbreak has been reported, but there is no increase in cases of ILI.
- Local:** Outbreaks of influenza or increases in ILI cases and recent laboratory-confirmed influenza in a single region of the state.
- Regional:** Outbreaks of influenza or increases in ILI and recent laboratory confirmed influenza in at least two but less than half the regions of the state with recent laboratory evidence of influenza in those regions.
- Widespread:** Outbreaks of influenza or increases in ILI cases and recent laboratory-confirmed influenza in at least half the regions of the state with recent laboratory evidence of influenza in the state.

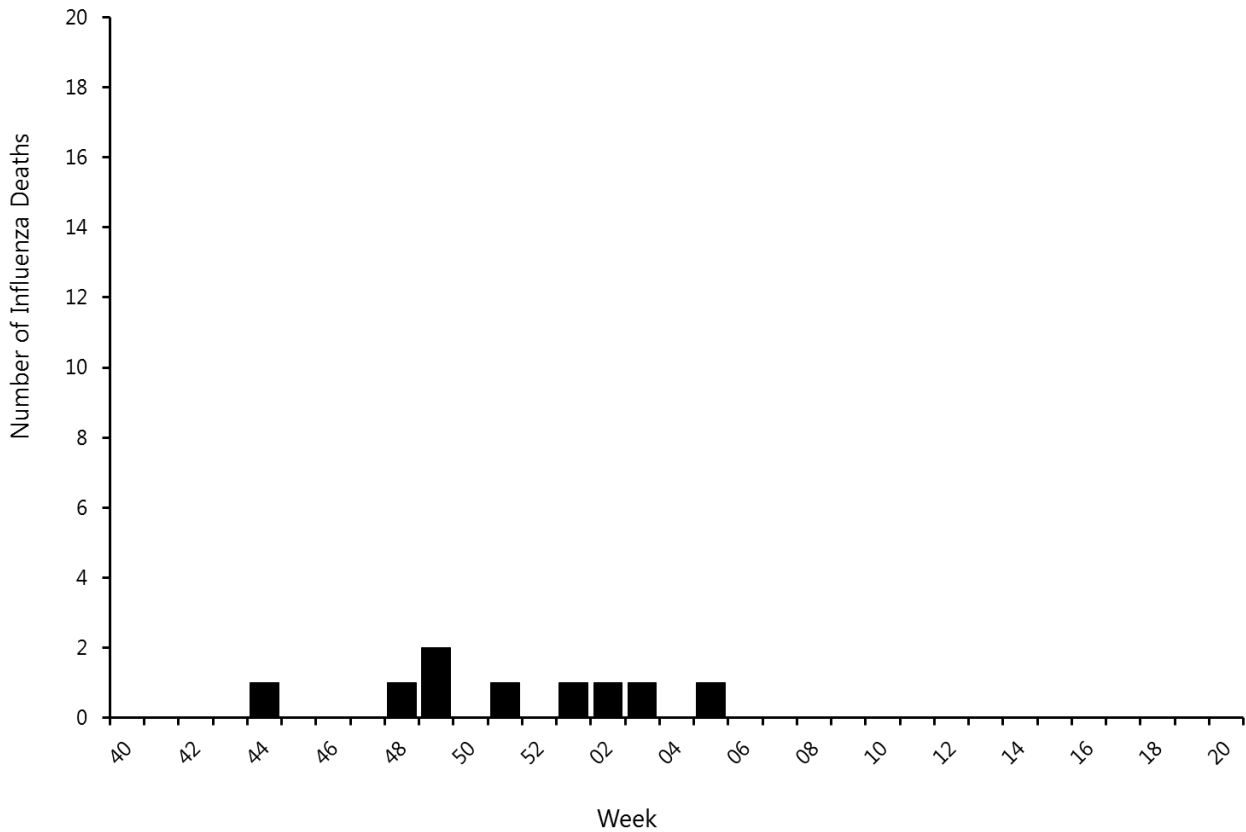
## Influenza-Associated Mortality

Influenza-associated deaths (in all ages) are reportable by law in the state of Georgia. To be confirmed as a influenza-associated death, the person must have a clinically compatible illness, a positive influenza test, no documented recovery between the illness and death.

There was 1 influenza-associated death reported in Georgia during week 05.

A total of 9 influenza-associated deaths have been confirmed for the 2018-2019 season.

**Number of Laboratory Confirmed Influenza Deaths by Week of Death: Georgia Summary, 2018-19 Influenza Season**



**Summary of Influenza-associated Deaths, by Age, Georgia, 2018-19 Influenza Season**

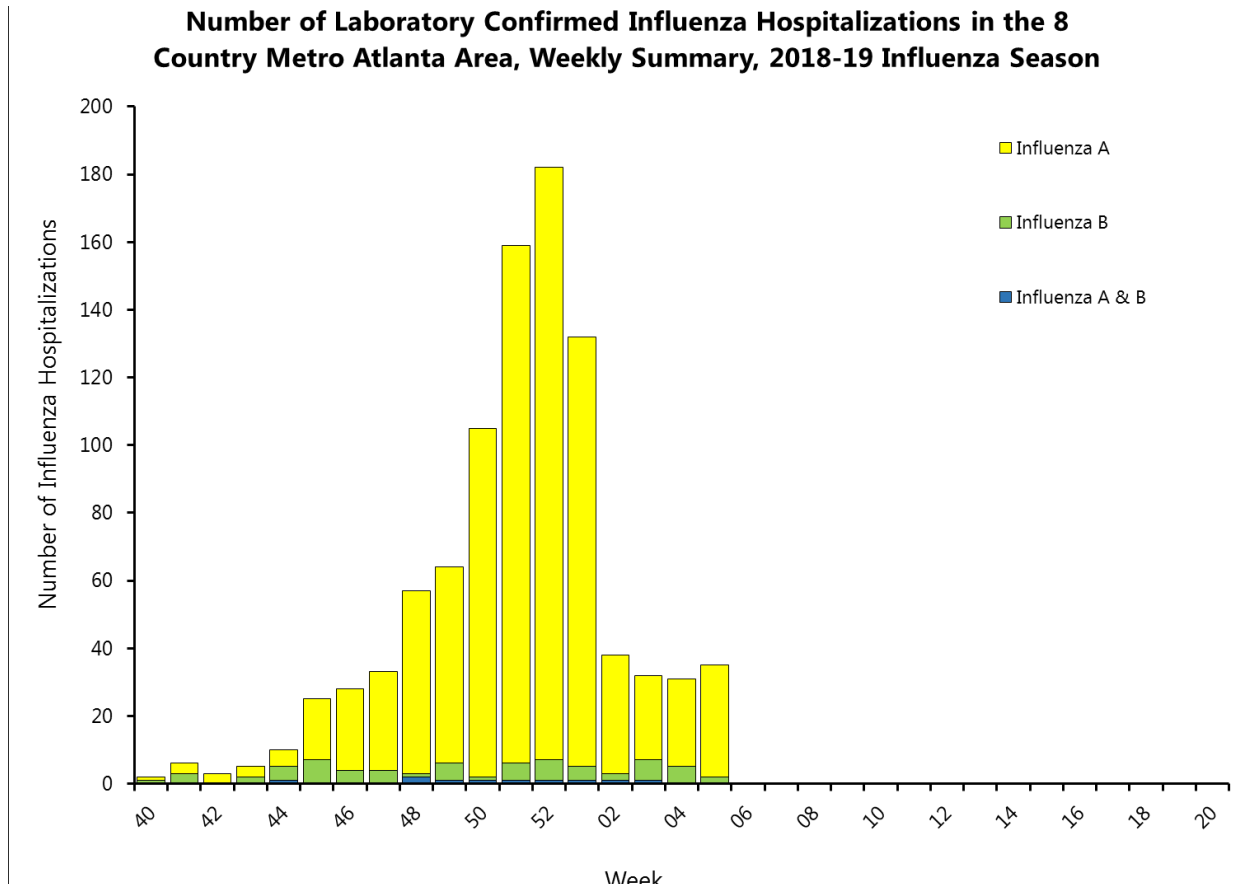
Age Group in Years	No. of Flu Deaths (Data Cumulative since Week 40)
0-4	0
5-17	1
18-49	1
50-64	1
65+	6
<b>Total</b>	<b>9</b>

## Influenza-Associated Hospitalizations

The Influenza Hospitalization Surveillance Network (FluSurv-Net) reports laboratory confirmed influenza hospitalizations in the eight county metro Atlanta area (Fulton, DeKalb, Clayton, Cobb, Douglas, Gwinnett, Rockdale, and Newton) for the 2018-2019 influenza season.

There were 35 laboratory confirmed influenza hospitalizations confirmed for week 05.

A total of 947 laboratory confirmed influenza hospitalizations have been reported for the 2018-2019 season.



### Summary of Influenza Hospitalizations, by Age, Georgia, 2018-19 Influenza Season

Age Group in Years	No. of Flu Hospitalization (Cumulative Data since Week 40)	Hospitalization Rate (per 100,000 population)
0-4	106	39.62
5-17	96	12.97
18-49	197	10.47
50-64	196	26.00
65+	352	77.41
<b>Total</b>	<b>947</b>	<b>23.11</b>

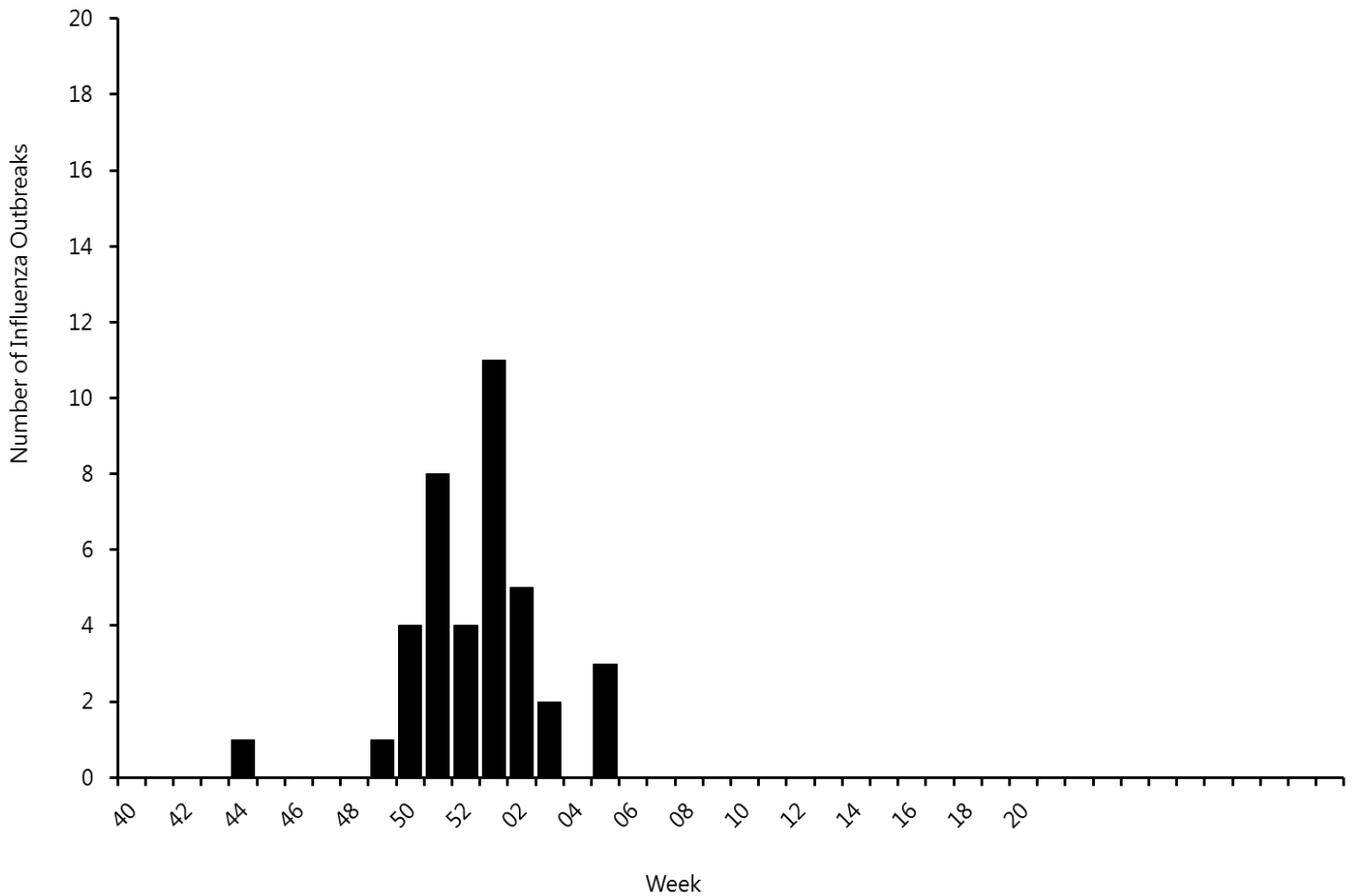
## Influenza Outbreaks

Influenza outbreaks are reportable by law in the state of Georgia.

3 influenza outbreaks were reported for week 05.

A total of 36 laboratory confirmed influenza outbreaks have been reported in Georgia for the 2018-2019 season.

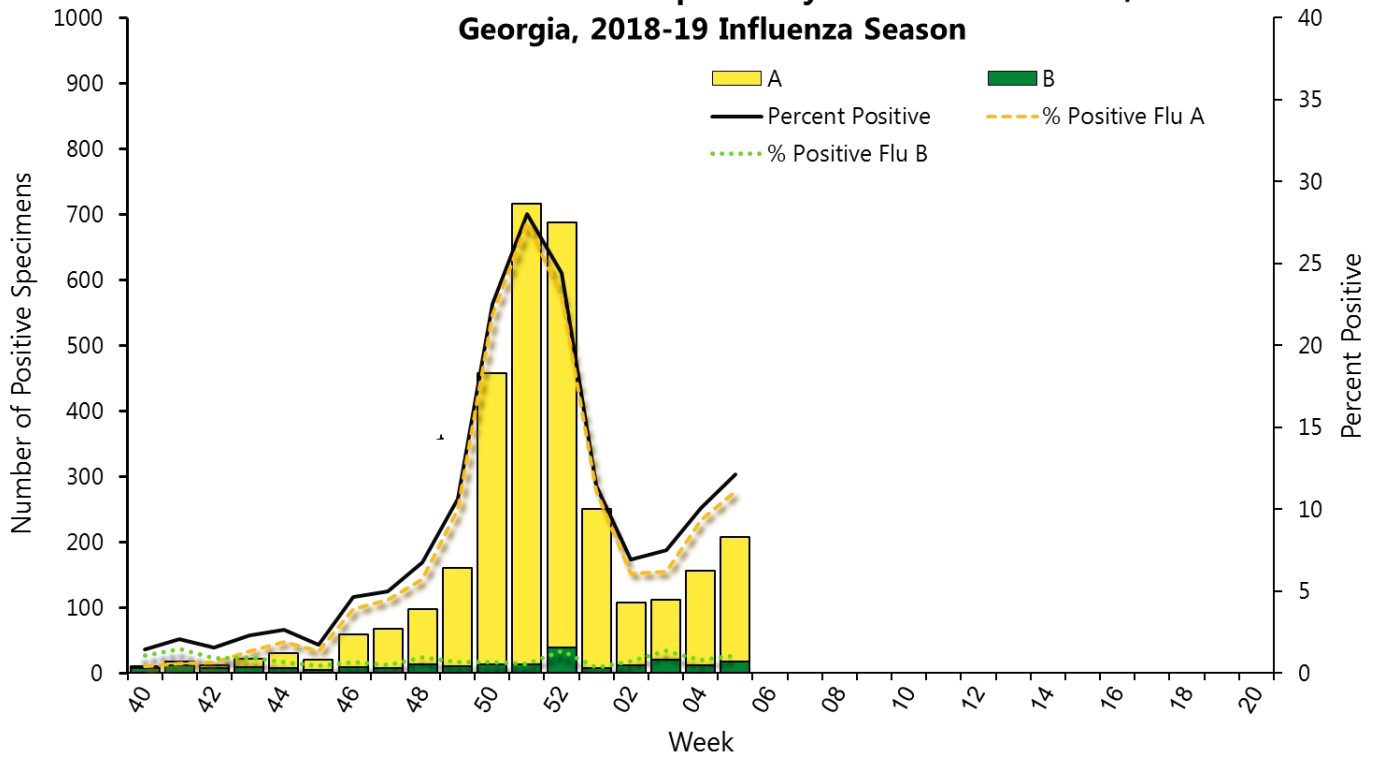
**Number of Laboratory Confirmed Influenza Outbreaks by Onset Week  
Weekly Georgia, Summary, 2018-19 Influenza Season**



## Virologic Surveillance

The National Respiratory and Enteric Virus Surveillance System (NREVSS) and World Health Organization (WHO) collaborating laboratories (a combination of clinical and public health laboratories) report the total number of respiratory specimens tested for influenza and the number of positive for influenza, by virus type. Public Health Laboratories provide data about influenza virus subtypes and lineages (next page).

**Influenza Positive Tests Reported by Clinical Laboratories, Georgia, 2018-19 Influenza Season**

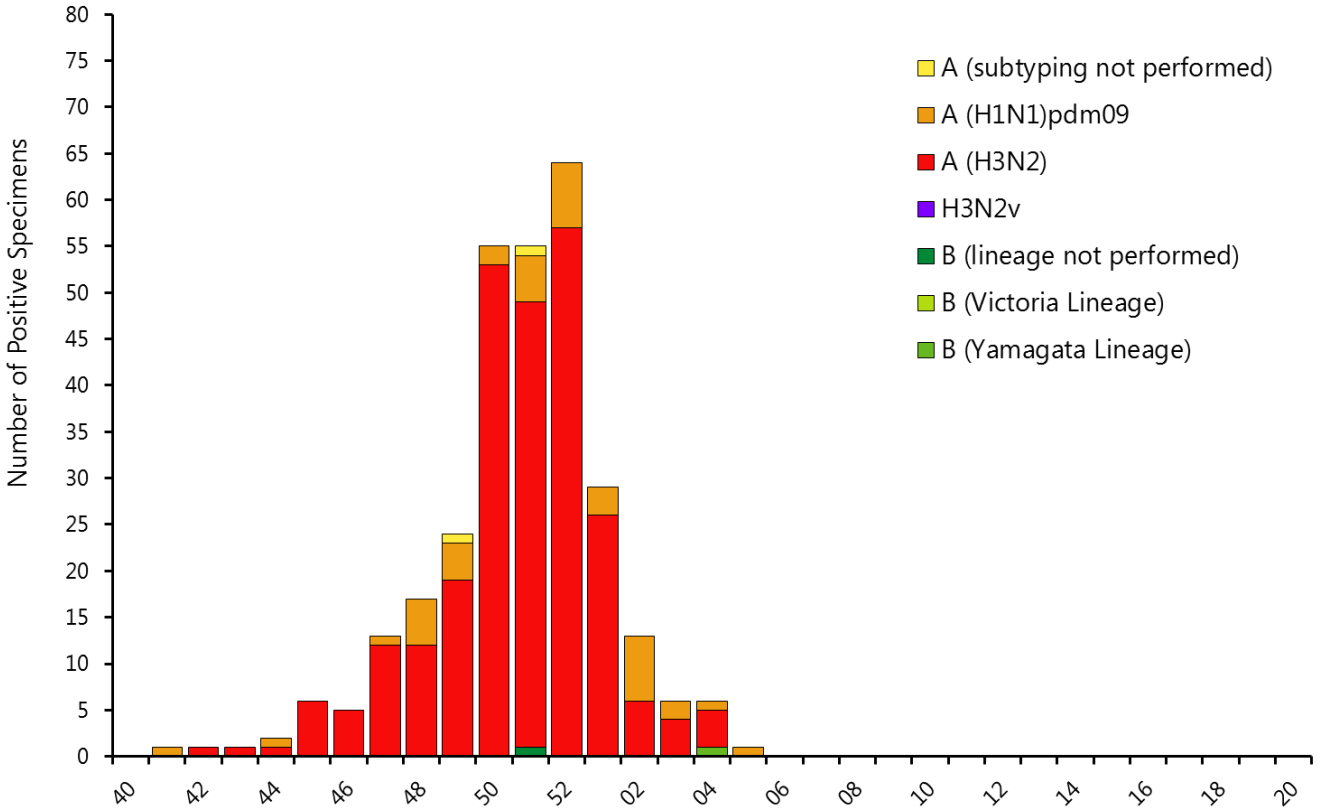


**Summary of Influenza Tests from Clinical Laboratories, Georgia,**

	Week 05	Cumulative Data Since Week 40
No. of specimens tested	1,702	27,138
No. of positive specimens	207	3,196
<i>Influenza A</i>	189	2,970
<i>Influenza B</i>	18	226



During week 05, public health laboratories in Georgia reported testing 11 specimens for influenza, 1 specimen was positive for influenza.



**Summary of Influenza Tests from Public Health Laboratories, Georgia,**

	Cumulative Data Since Week 40
No. of specimens tested	772
No. of Positive Specimens	299
<i>Influenza A (subtype not performed)</i>	2
<i>A(H1N1)pmd09</i>	40
<i>H3</i>	255
<i>Influenza B (lineage not performed)</i>	1
<i>Yamagata lineage</i>	1
<i>Victoria lineage</i>	0

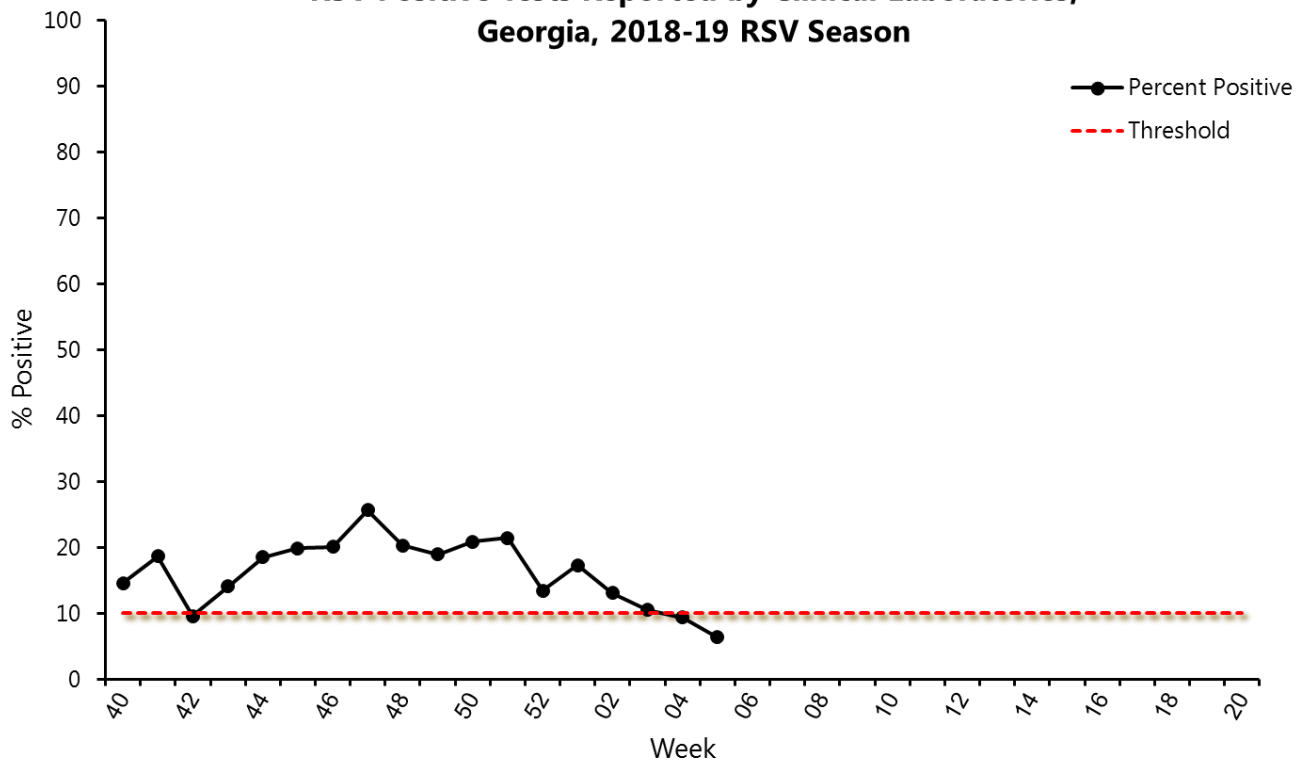
## Respiratory Syncytial Virus Infection (RSV) Surveillance

Data from NREVSS are also analyzed to measure the RSV seasonality. RSV season onset is defined as the first week of two (2) consecutive weeks when the percent positive of ALL laboratory confirmed tests are greater than or equal to 10%. The end of RSV season is now defined as the first week of two consecutive weeks when the percent positive of ALL laboratory confirmed tests are less than 10%.

RSV Season Status: **ON**

During week 05, clinical laboratories in Georgia reported testing 266 specimens, of which 6% were positive for RSV.

**RSV Positive Tests Reported by Clinical Laboratories, Georgia, 2018-19 RSV Season**



### Summary of RSV Tests from Clinical Laboratories, Georgia,

	Week 05	Data Cumulative Since Week 40
No. of specimens tested	266	4,671
No. of positive specimens	15	772