



Georgia Weekly Influenza Report

Updated 3/19/2020

Week 10 (March 1 — March 7, 2020)

Snapshot of Influenza Activity During Week 10:

- **Outpatient Illness Surveillance (ILINet):** The proportion of outpatient visits for ILI was **5.4%**, which is **ABOVE** the regional baseline of 2.4%
- **Activity Indicator Map:** HIGH
- **Geographic Spread of Influenza:** WIDESPREAD
- **Influenza-associated Deaths:** 5 deaths
- **Metro Area Hospitalizations:** 60 hospitalizations
- **Influenza Outbreaks:** 2 outbreaks
- **Viral Surveillance:** The percent of specimens testing positive for influenza by clinical laboratories was 15.4%

Summary of Select Influenza Surveillance Measures

	Week 10	Cumulative Data since September 29, 2019 (Week 40)*
No. of Influenza-associated Deaths	5	83
No. of Metro Area Influenza Hospitalizations	60	2,365
No. of Influenza Outbreaks	2	95

*Cumulative data may include updated numbers from previous weeks.

Contact: Audrey.Kunkes@dph.ga.gov or (404) 463-4625

GA DPH on the web!
<http://dph.georgia.gov/>

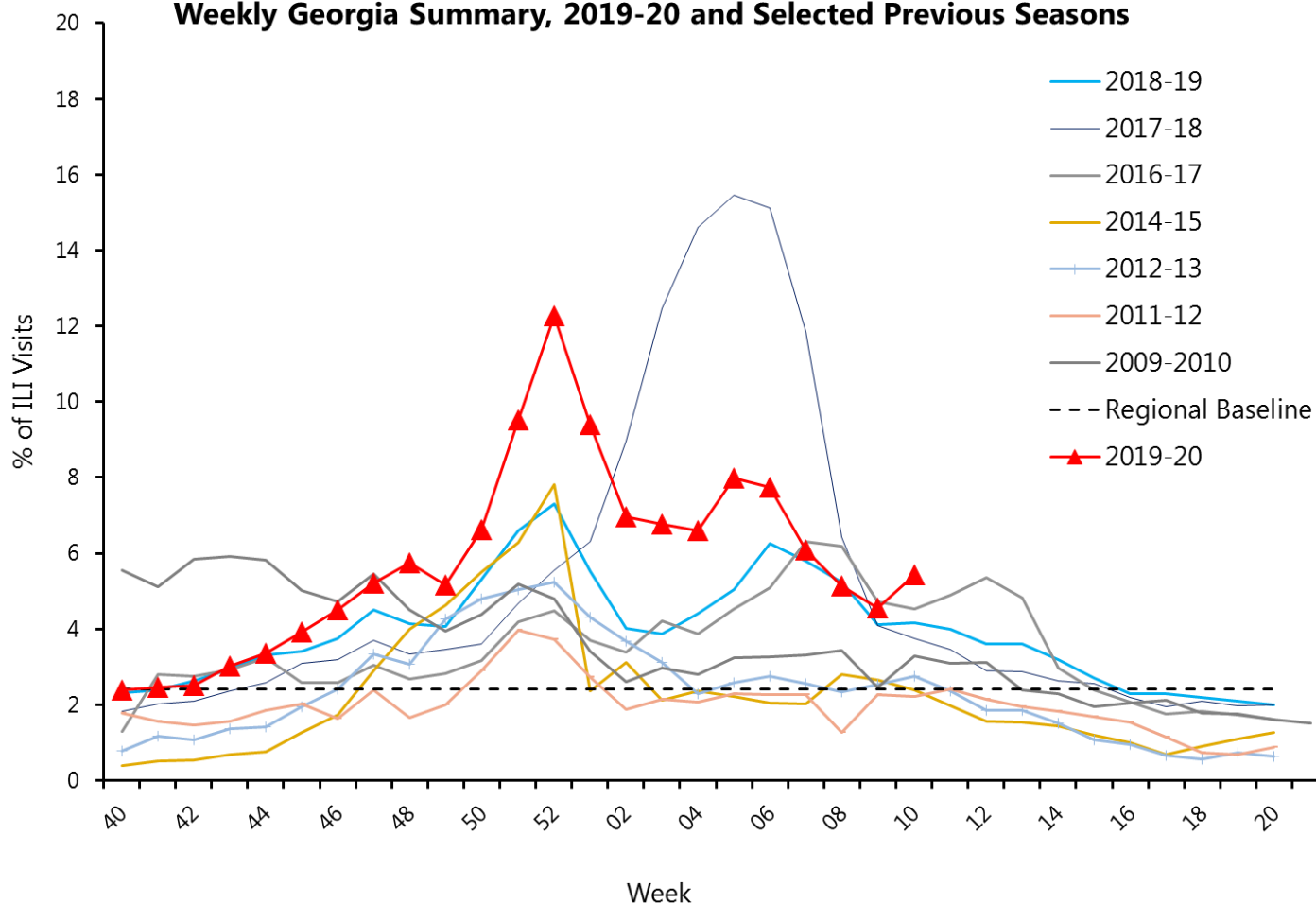
Outpatient Illness Surveillance

In Georgia during week 10, 5.4% of patient visits reported through the U.S. Outpatient Influenza-like Illness Surveillance Network (ILINet) were due to influenza-like illness (ILI). The percentage is above the regional baseline of 2.4%. (ILI is defined as fever (temperature of 100°F [37.8°C] or greater) and cough and/or sore throat.)

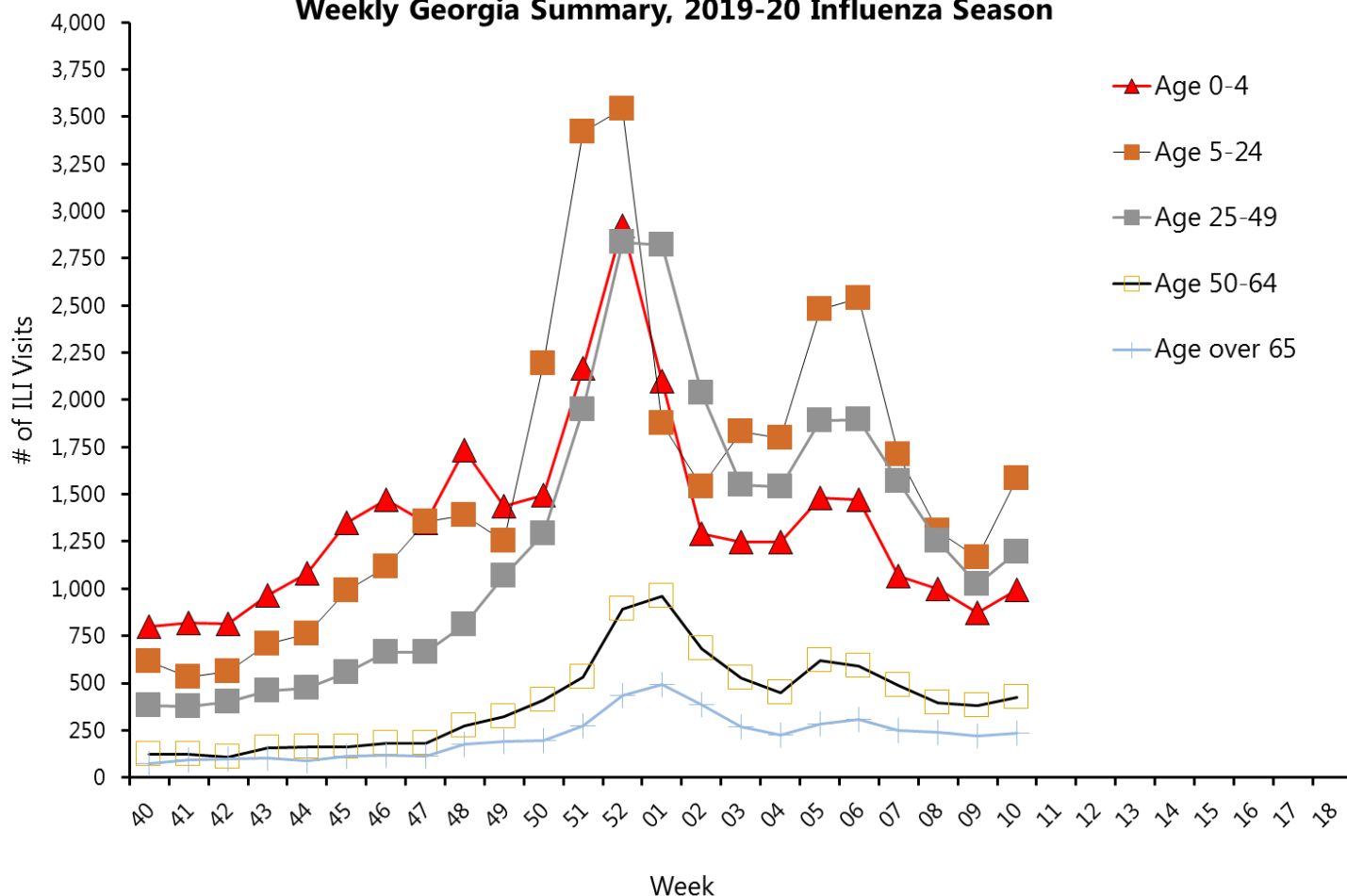
A total of 100 sentinel providers reported data for week 10.

Note: The regional baseline is formulated by averaging ILI percentage during weeks of endemic activity determined by laboratory results for influenza. HHS Region 4 (AL, FL, GA, KY, MS, NC, SC, and TN) (Baseline: 2.4%).

Percentage of Visits for Influenza-like Illness (ILI) Reported by the Outpatient Influenza-like Illness Surveillance Network (ILINet), Weekly Georgia Summary, 2019-20 and Selected Previous Seasons



Number of Visits for Influenza-like Illness (ILI), by Age, Reported by the Outpatient Influenza-like Illness Surveillance Network (ILINet), Weekly Georgia Summary, 2019-20 Influenza Season

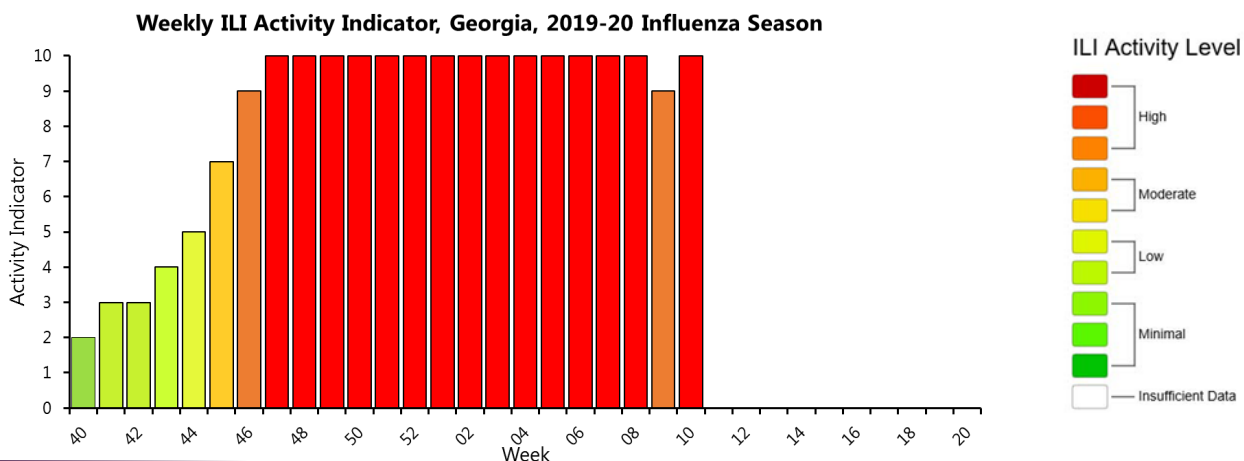


Age Group in Years	No. of ILI Visits (Week 10)	Cumulative Data since September 29, 2019 (Week 40)
0-4	995	31,173
5-24	1,584	36,263
25-49	1,196	28,694
50-64	425	9,147
65+	237	4,986
Total	4,986	110,263

ILI Activity Indicator

ILI Activity Levels measure ILI activity each week. Activity levels are based on the percent of outpatient visits in Georgia due to ILI compared to the 3 year average of ILI visits during weeks with little or no influenza virus circulation.

During week 10, the activity level in Georgia was **HIGH = 10**

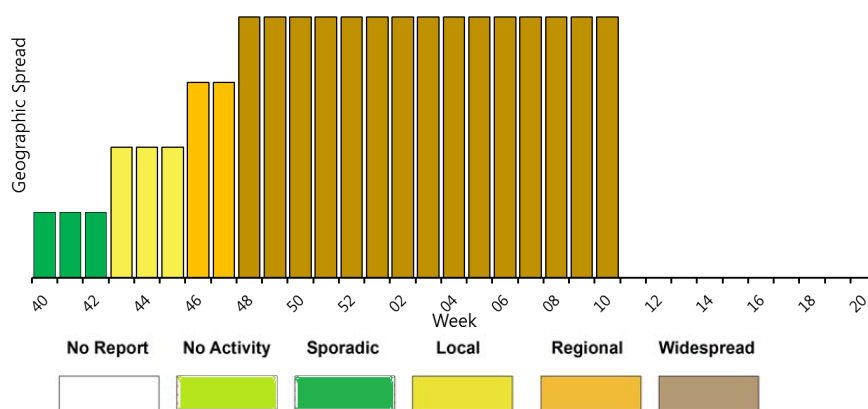


Geographic Spread of Influenza

Geographic spread is measured weekly and reflects geographic dispersion of influenza and is not an indicator of influenza severity.

During week 10, the geographic spread of influenza in Georgia was **WIDESPREAD**.

Weekly Influenza Activity Estimates of Geographic Spread, Georgia, 2019-20 Influenza Season



- No Activity:** No laboratory-confirmed cases of influenza and no reported increase in the number of cases of ILI.
- Sporadic:** Small numbers of laboratory-confirmed influenza cases or a single laboratory-confirmed influenza outbreak has been reported, but there is no increase in cases of ILI.
- Local:** Outbreaks of influenza or increases in ILI cases and recent laboratory-confirmed influenza in a single region of the state.
- Regional:** Outbreaks of influenza or increases in ILI and recent laboratory confirmed influenza in at least two but less than half the regions of the state with recent laboratory evidence of influenza in those regions.
- Widespread:** Outbreaks of influenza or increases in ILI cases and recent laboratory-confirmed influenza in at least half the regions of the state with recent laboratory evidence of influenza in the state.

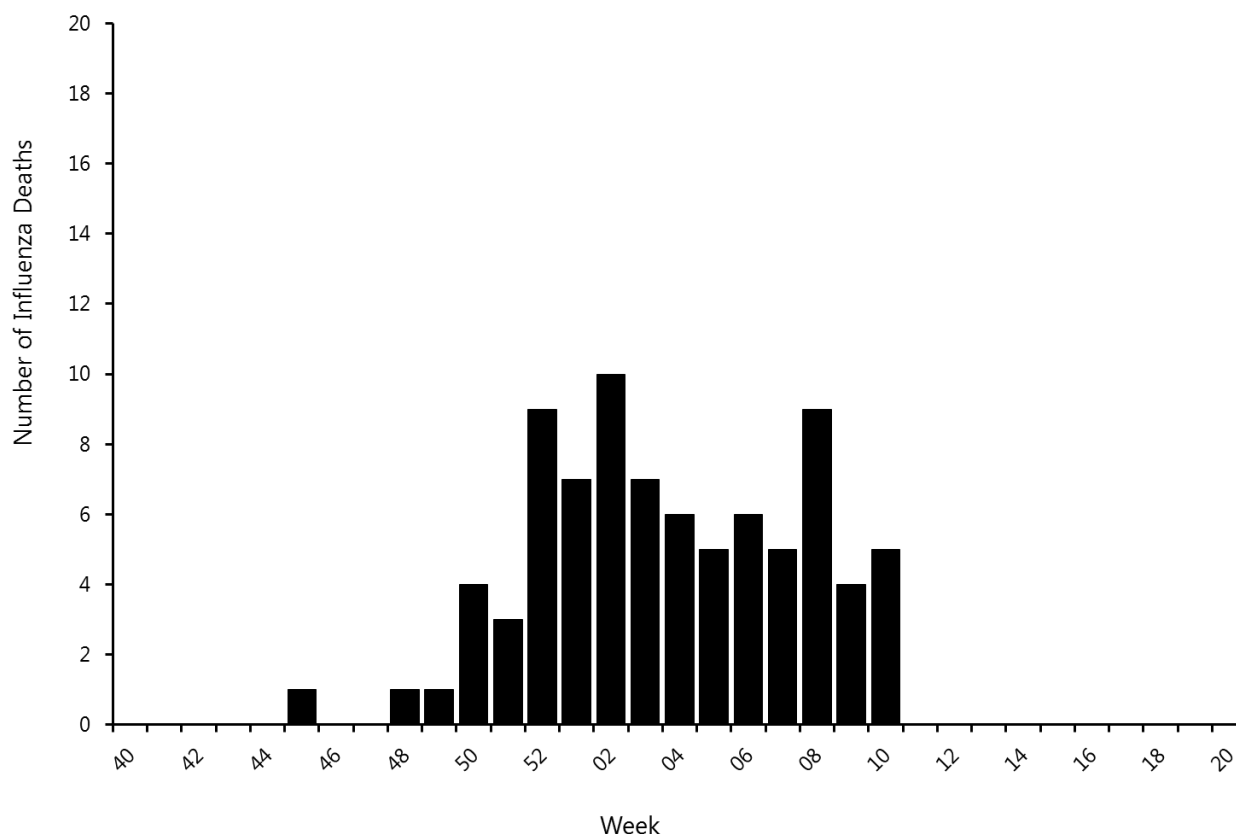
Influenza-Associated Mortality

Influenza-associated deaths (in all ages) are reportable by law in the state of Georgia. To be confirmed as a as influenza-associated death, the person must have a clinically compatible illness, a positive influenza test, no documented recovery between the illness and death.

There were 5 influenza-associated deaths confirmed for week 10 in Georgia.

A total of 83 influenza-associated deaths have been confirmed for the 2019-20 season.

**Number of Laboratory Confirmed Influenza Deaths by Week of Death: Georgia
Summary, 2019-20 Influenza Season**



Summary of Influenza-associated Deaths, by Age, Georgia, 2019-20 Influenza Season

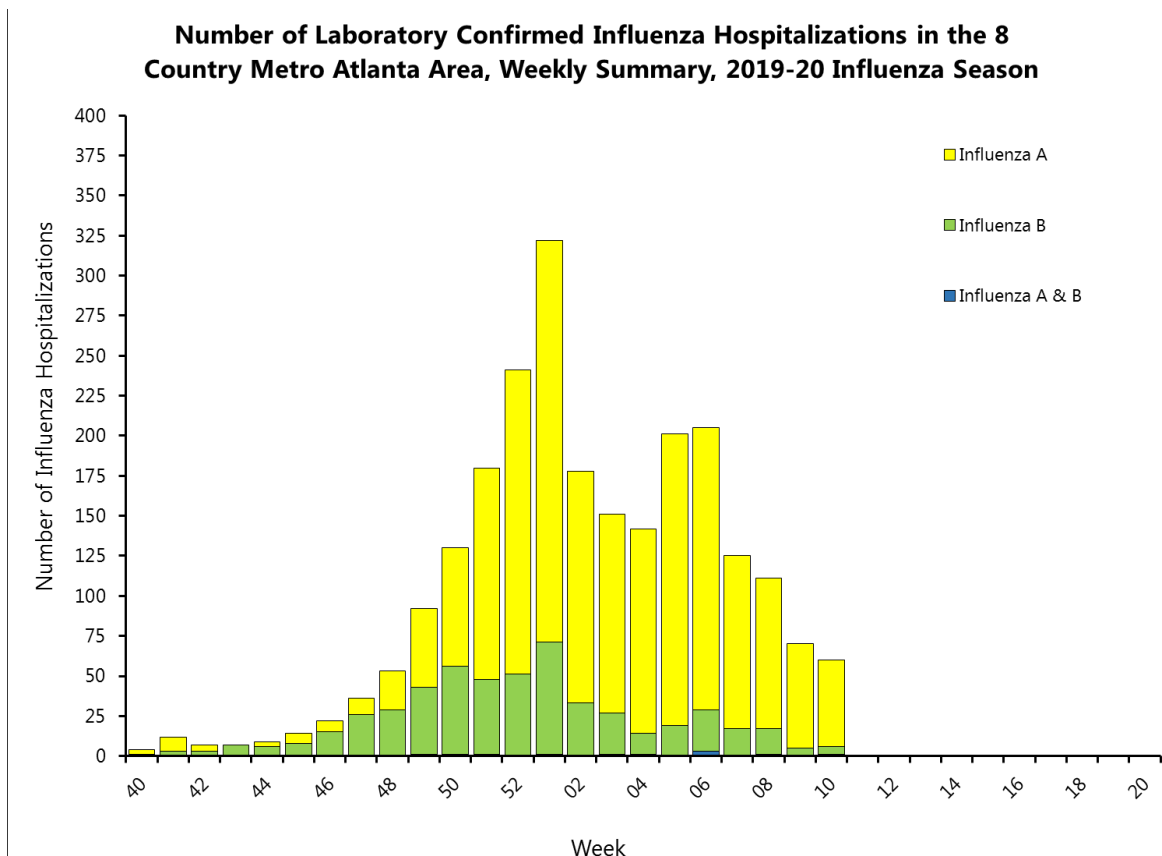
Age Group in Years	No. of Flu Deaths (Data Cumulative since Week 40)
0-4	3
5-17	2
18-49	17
50-64	20
65+	41
Total	83

Influenza-Associated Hospitalizations

The Influenza Hospitalization Surveillance Network (FluSurv-Net) reports laboratory confirmed influenza hospitalizations in the eight county metro Atlanta area (Fulton, DeKalb, Clayton, Cobb, Douglas, Gwinnett, Rockdale, and Newton) for the 2019-20 influenza season.

There were 60 laboratory confirmed influenza hospitalizations confirmed for week 10.

A total of 2,365 laboratory confirmed influenza hospitalizations have been reported for the 2019-20 season.



Summary of Influenza Hospitalizations, by Age, Georgia, 2019-20 Influenza Season

Age Group in Years	No. of Flu Hospitalization (Cumulative Data since Week 40)	Hospitalization Rate (per 100,000 population)
0-4	221	83.3
5-17	151	20.5
18-49	707	37.4
50-64	578	76.1
65+	708	149.4
Total	2,365	57.3

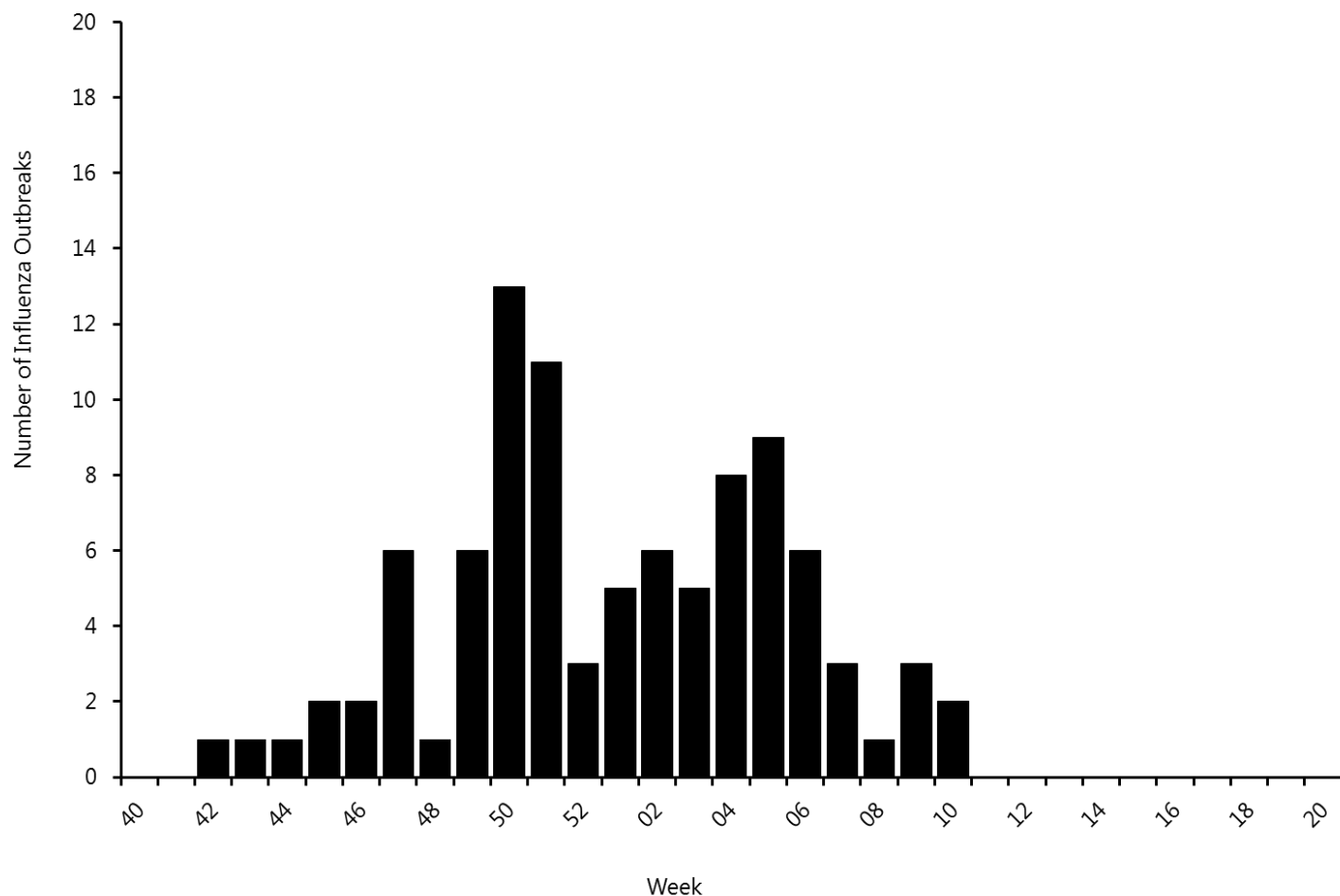
Influenza Outbreaks

Influenza outbreaks are reportable by law in the state of Georgia.

2 influenza outbreaks were reported for week 10.

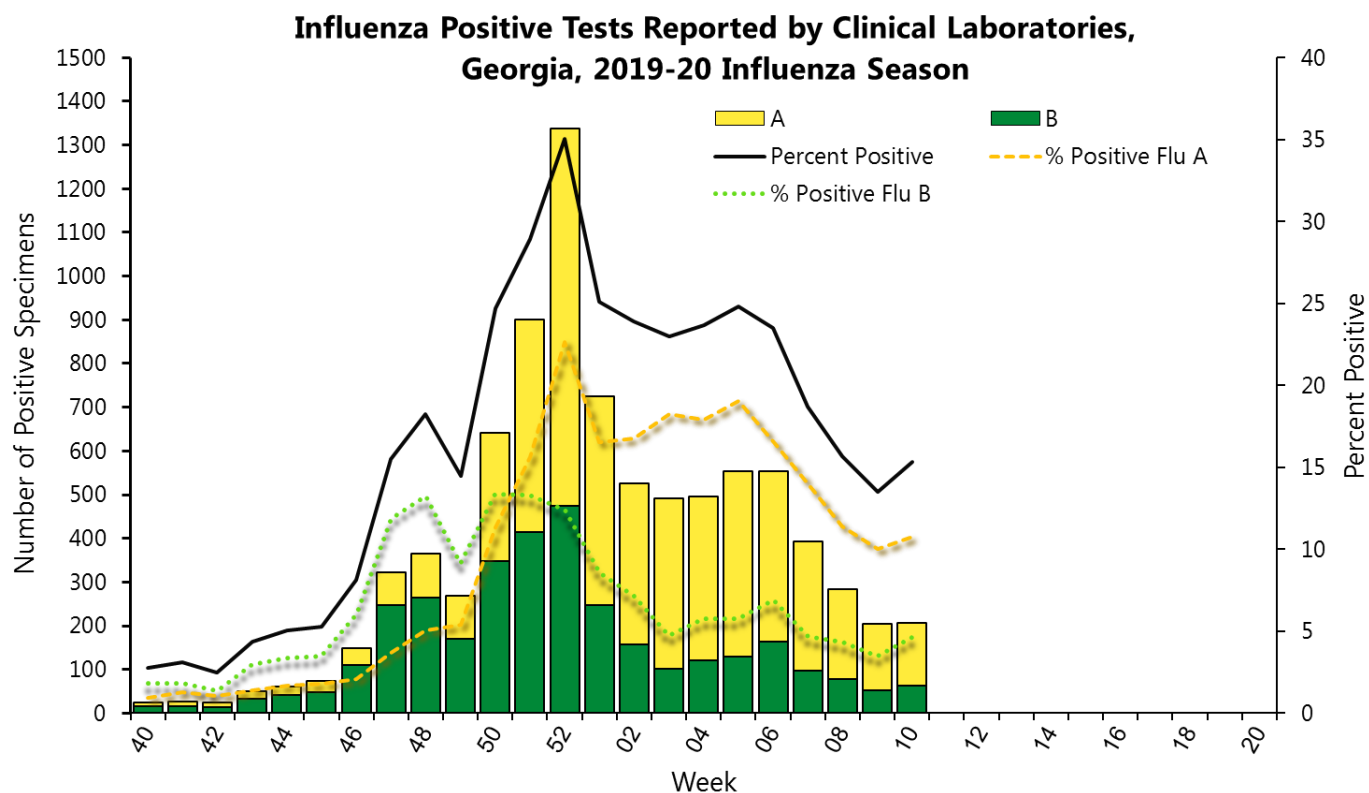
A total of 95 laboratory confirmed influenza outbreaks have been reported in Georgia for the 2019-20 season.

Number of Laboratory Confirmed Influenza Outbreaks by Week Reported to Public Health, Weekly Georgia, Summary, 2019-20 Influenza Season



Virologic Surveillance

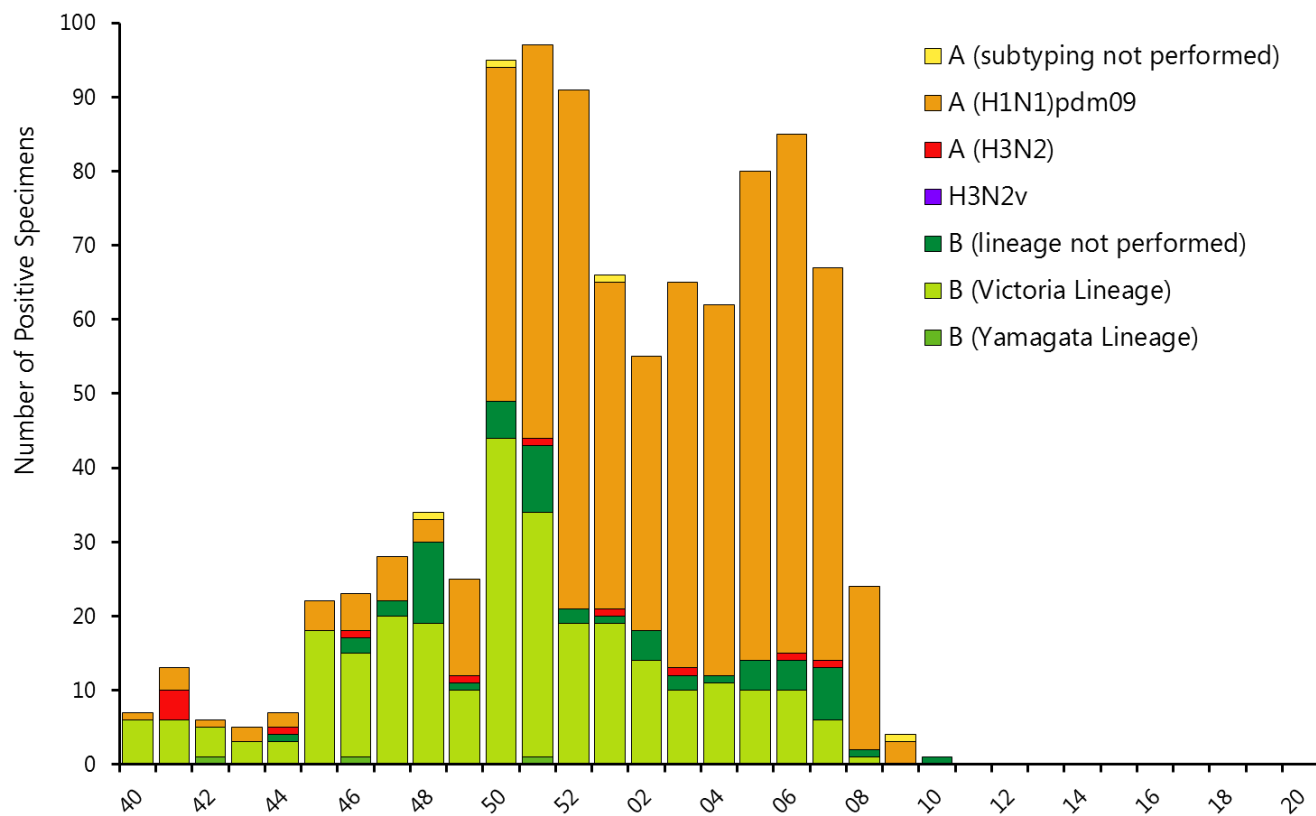
The National Respiratory and Enteric Virus Surveillance System (NREVSS) and World Health Organization (WHO) collaborating laboratories (a combination of clinical and public health laboratories) report the total number of respiratory specimens tested for influenza and the number of positive for influenza, by virus type. Public Health Laboratories provide data about influenza virus subtypes and lineages (next page).



Summary of Influenza Tests from Clinical Laboratories, Georgia,

	Week 10	Cumulative Data Since Week 40
No. of specimens tested	1,341	44,478
No. of positive specimens	206	8,680
<i>Influenza A</i>	144	5,274
<i>Influenza B</i>	62	3,406

During week 10, public health laboratories in Georgia reported testing 1 specimen for influenza, it was positive for influenza B(lineage not performed).



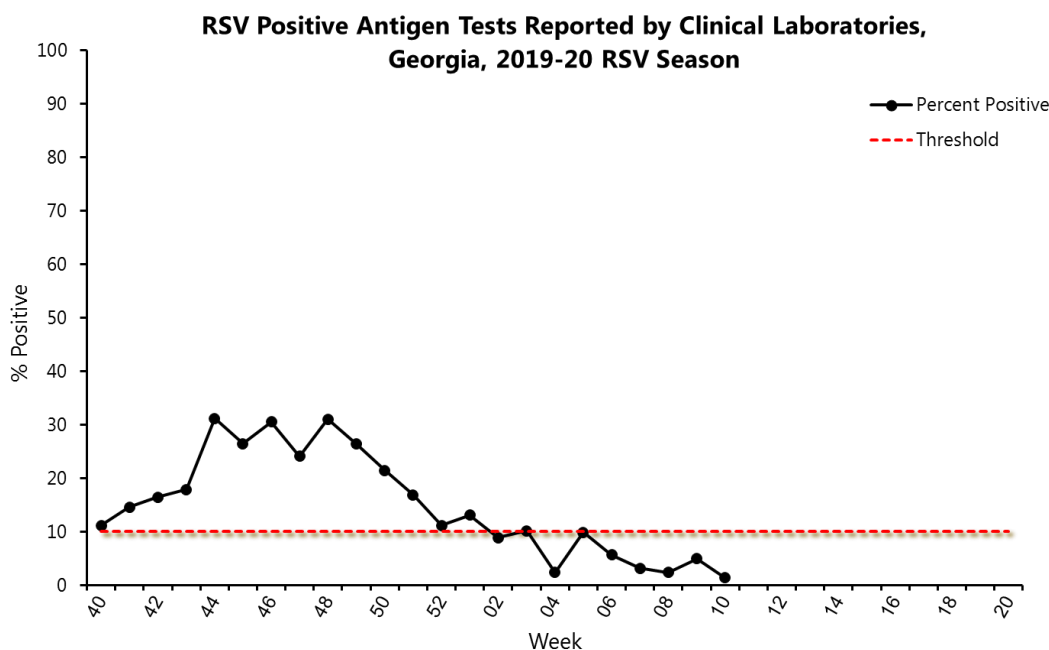
Summary of Influenza Tests from Public Health Laboratories, Georgia,

	Cumulative Data Since Week 40
No. of specimens tested	1,668
No. of Positive Specimens	962
<i>Influenza A (subtype not performed)</i>	4
<i>A(H1N1)pmd09</i>	605
<i>H3</i>	12
<i>Influenza B (lineage not performed)</i>	58
<i>Yamagata lineage</i>	3
<i>Victoria lineage</i>	280

Respiratory Syncytial Virus Infection (RSV) Surveillance

Data from NREVSS are also analyzed to measure the RSV seasonality. Antigen and polymerase chain reaction (PCR) tests are analyzed separately to determine the start and end of RSV season. Season onset is defined as the first week of two consecutive weeks when the percent positive of ALL laboratory confirmed tests are greater than or equal a certain threshold. The end is defined as the first week of two consecutive weeks when the percent positive of ALL laboratory confirmed tests are less than a certain threshold. For antigen-based testing, the threshold is 10% and for PCR the threshold is 3%.

During week 10, clinical laboratories in Georgia reported testing 286 specimens with antigen testing methods, 1.4% were positive for RSV.



During week 10, clinical laboratories in Georgia reported testing 336 specimens with **PCR** testing methods, 4.2% were positive for RSV.

