

## Week 11 (March 14 — March 20, 2021)

### Snapshot of Influenza Activity During Week 11:

- **Outpatient Illness Surveillance (ILINet):** The proportion of outpatient visits for ILI was **1.6%**, which is **BELOW** the regional baseline of 3.1%
- **Activity Indicator Map:** MINIMAL
- **Influenza-associated Deaths:** 0 deaths
- **Metro Area Hospitalizations:** 1 hospitalization
- **Influenza Outbreaks:** 0 outbreaks
- **Viral Surveillance:** The percent of specimens testing positive for influenza by clinical laboratories was 0.3%

### Summary of Select Influenza Surveillance Measures

	Week 11	Cumulative Data since September 27, 2020 (Week 40)*
No. of Influenza-associated Deaths	0	2
No. of Metro Area Influenza Hospitalizations	1	35
No. of Influenza Outbreaks	0	0

\*Cumulative data may include updated numbers from previous weeks.

Contact: [Audrey.Kunkes@dph.ga.gov](mailto:Audrey.Kunkes@dph.ga.gov) or (404) 463-4625

## Outpatient Illness Surveillance

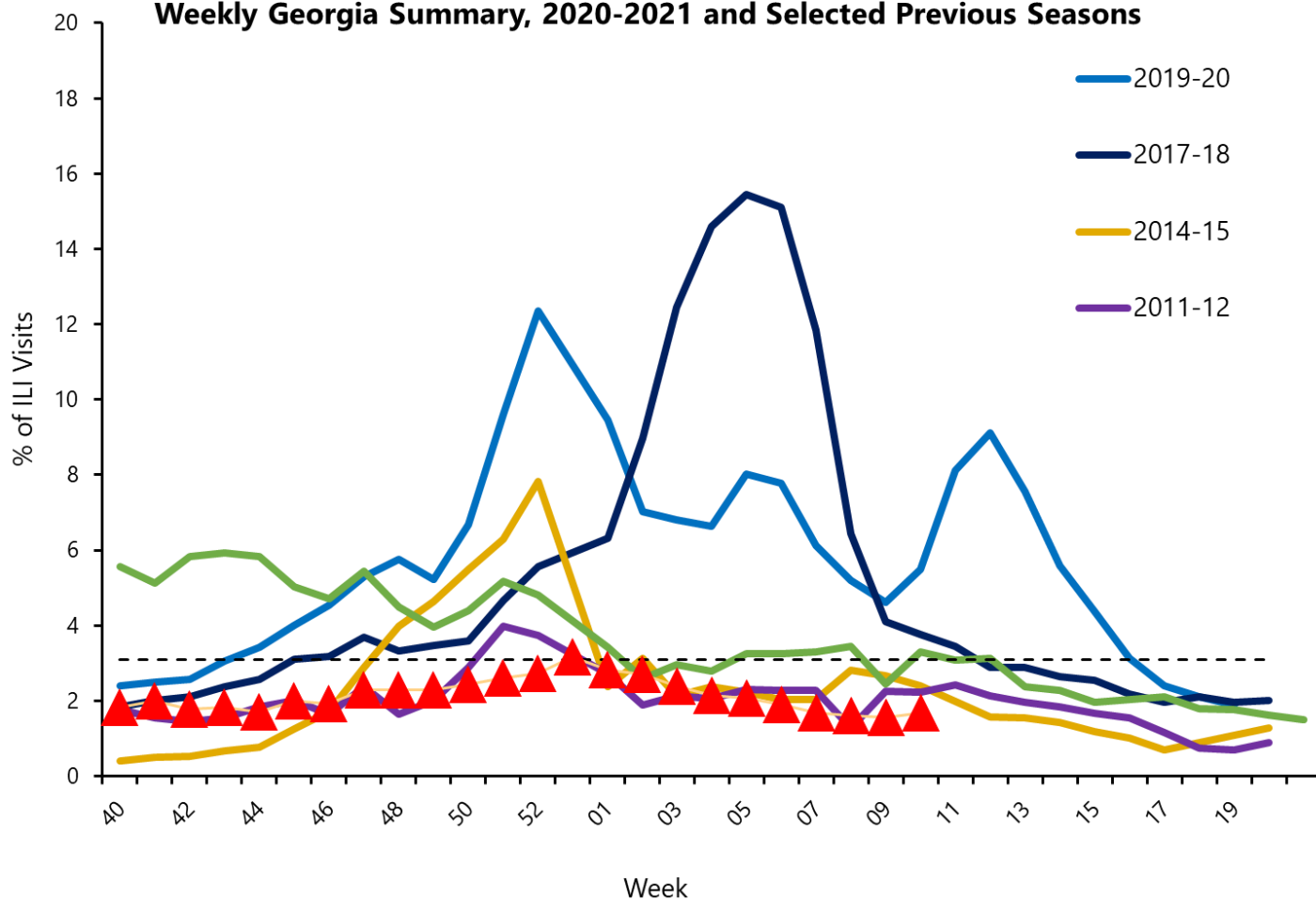
In Georgia during week 11, 1.6% of patient visits reported through the U.S. Outpatient Influenza-like Illness Surveillance Network (ILINet) were due to influenza-like illness (ILI). The percentage is below the regional baseline of 3.1%. (ILI is defined as fever (temperature of 100°F [37.8°C] or greater) and cough and/or sore throat.)

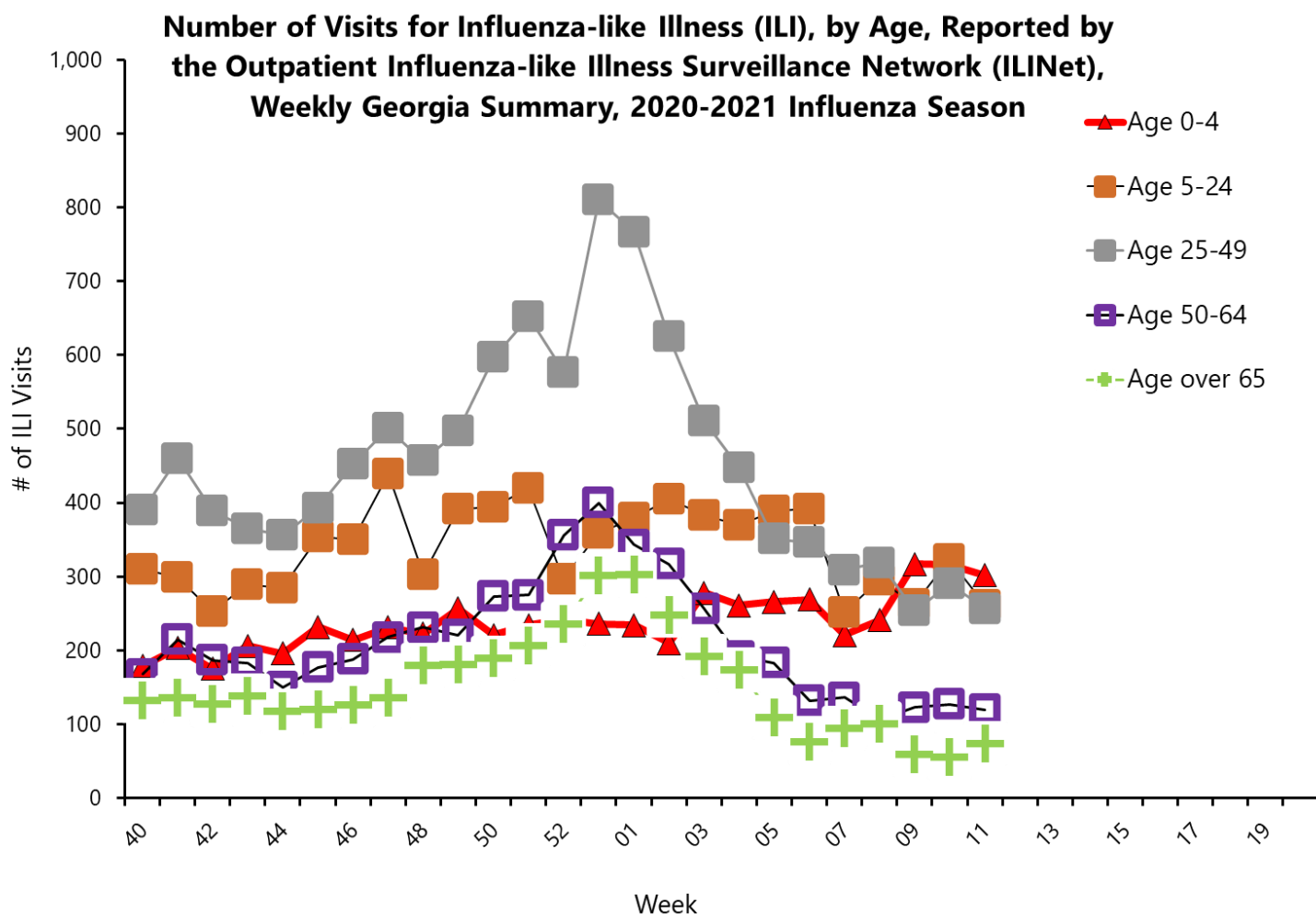
A total of 92 sentinel providers reported data for week 11.

The regional baseline is formulated by averaging ILI percentage during weeks of endemic activity determined by laboratory results for influenza. HHS Region 4 (AL, FL, GA, KY, MS, NC, SC, and TN) (Baseline: 3.1%).

Note: When drawing conclusions from the data please keep in mind that the influenza-like illness syndrome may be picking up COVID-19 illness.

**Percentage of Visits for Influenza-like Illness (ILI) Reported by the Outpatient Influenza-like Illness Surveillance Network (ILINet), Weekly Georgia Summary, 2020-2021 and Selected Previous Seasons**





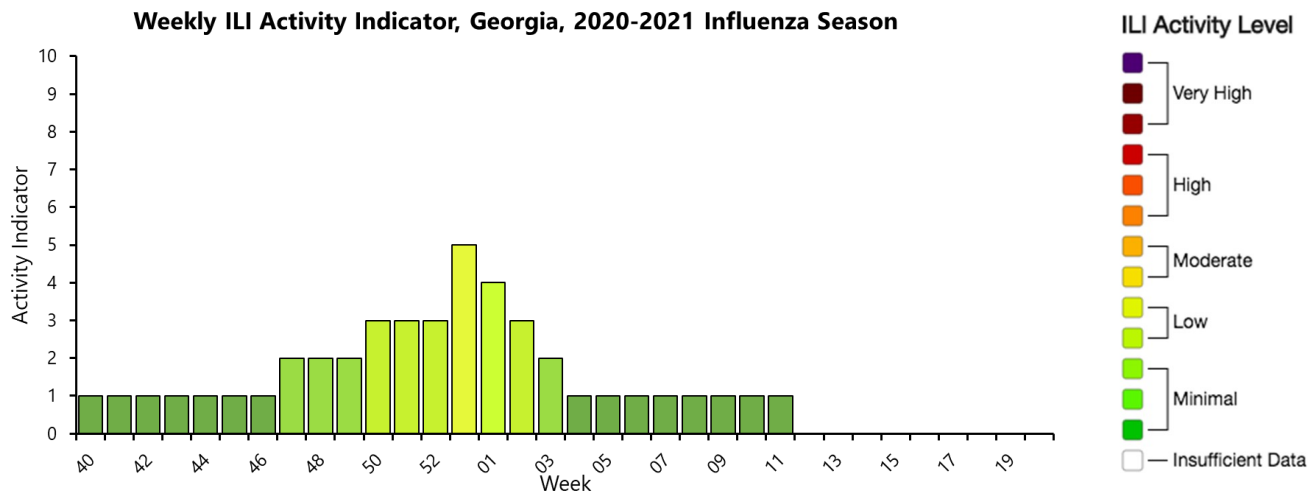
**Summary of ILI, by Age, Reported to ILINet, Weekly Georgia, 2020-2021 Influenza**

Age Group in Years	No. of ILI Visits (Week 11)	Cumulative Data since September 27, 2020 (Week 40)
0-4	302	5,964
5-24	261	8,455
25-49	257	11,373
50-64	120	5,278
65+	74	3,817
<b>Total</b>	<b>1,112</b>	<b>34,985</b>

## ILI Activity Indicator

ILI Activity Levels measure ILI activity each week. Activity levels are based on the percent of outpatient visits in Georgia due to ILI compared to the 3 year average of ILI visits during weeks with little or no influenza virus circulation.

During week 11, the activity level in Georgia was **MINIMAL = 1**



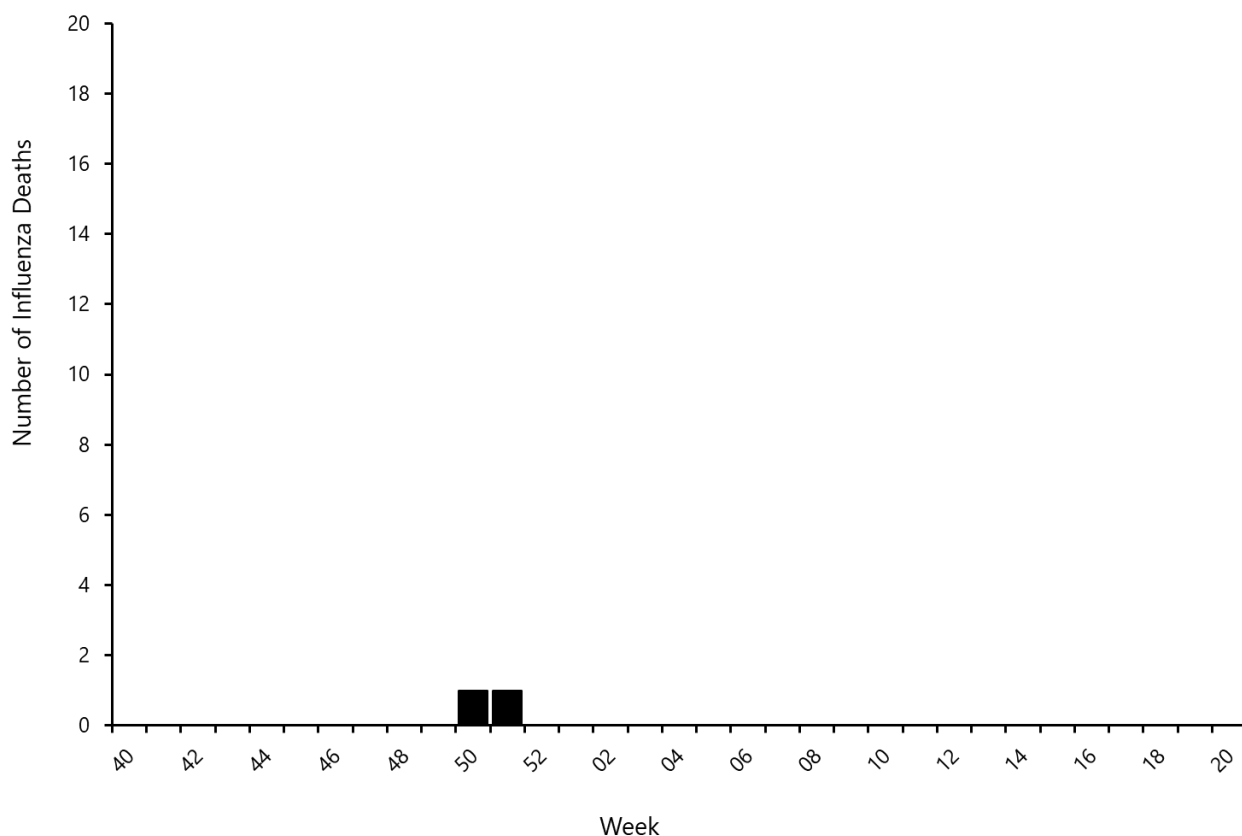
## Influenza-Associated Mortality

Influenza-associated deaths (in all ages) are reportable by law in the state of Georgia. To be confirmed as a as influenza-associated death, the person must have a clinically compatible illness, a positive influenza test, no documented recovery between the illness and death.

There were 0 influenza-associated death confirmed for week 11 in Georgia.

A total of 2 influenza-associated deaths have been confirmed for the 2020-2021 season.

**Number of Laboratory Confirmed Influenza Deaths by Week of Death: Georgia  
Summary, 2020-2021 Influenza Season**



**Summary of Influenza-associated Deaths, by Age, Georgia, 2020-2021 Influenza Season**

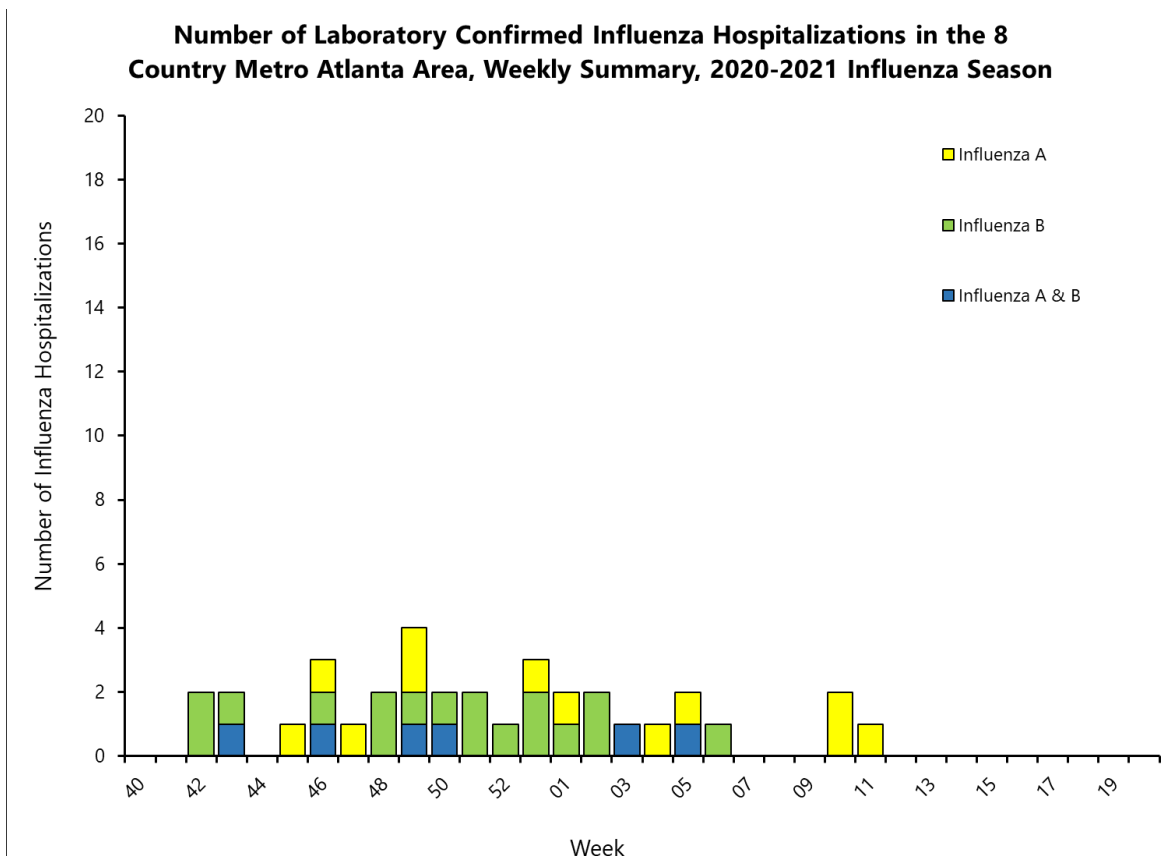
Age Group in Years	No. of Flu Deaths (Data Cumulative since
0-4	0
5-17	0
18-49	0
50-64	1
65+	1
Total	2

## Influenza-Associated Hospitalizations

The Influenza Hospitalization Surveillance Network (FluSurv-Net) reports laboratory confirmed influenza hospitalizations in the eight county metro Atlanta area (Fulton, DeKalb, Clayton, Cobb, Douglas, Gwinnett, Rockdale, and Newton) for the 2020-2021 influenza season.

There was 1 laboratory confirmed influenza hospitalization confirmed for week 11.

A total of 35 laboratory confirmed influenza hospitalizations have been reported for the 2020-2021 season.



### Summary of Influenza Hospitalizations, by Age, Georgia, 2020-2021 Influenza Season

Age Group in Years	No. of Flu Hospitalization (Cumulative Data since Week 40)	Hospitalization Rate (per 100,000 population)
0-4	1	0.37
5-17	0	0.00
18-49	6	0.32
50-64	13	1.72
65+	15	3.30
<b>Total</b>	<b>35</b>	<b>0.85</b>

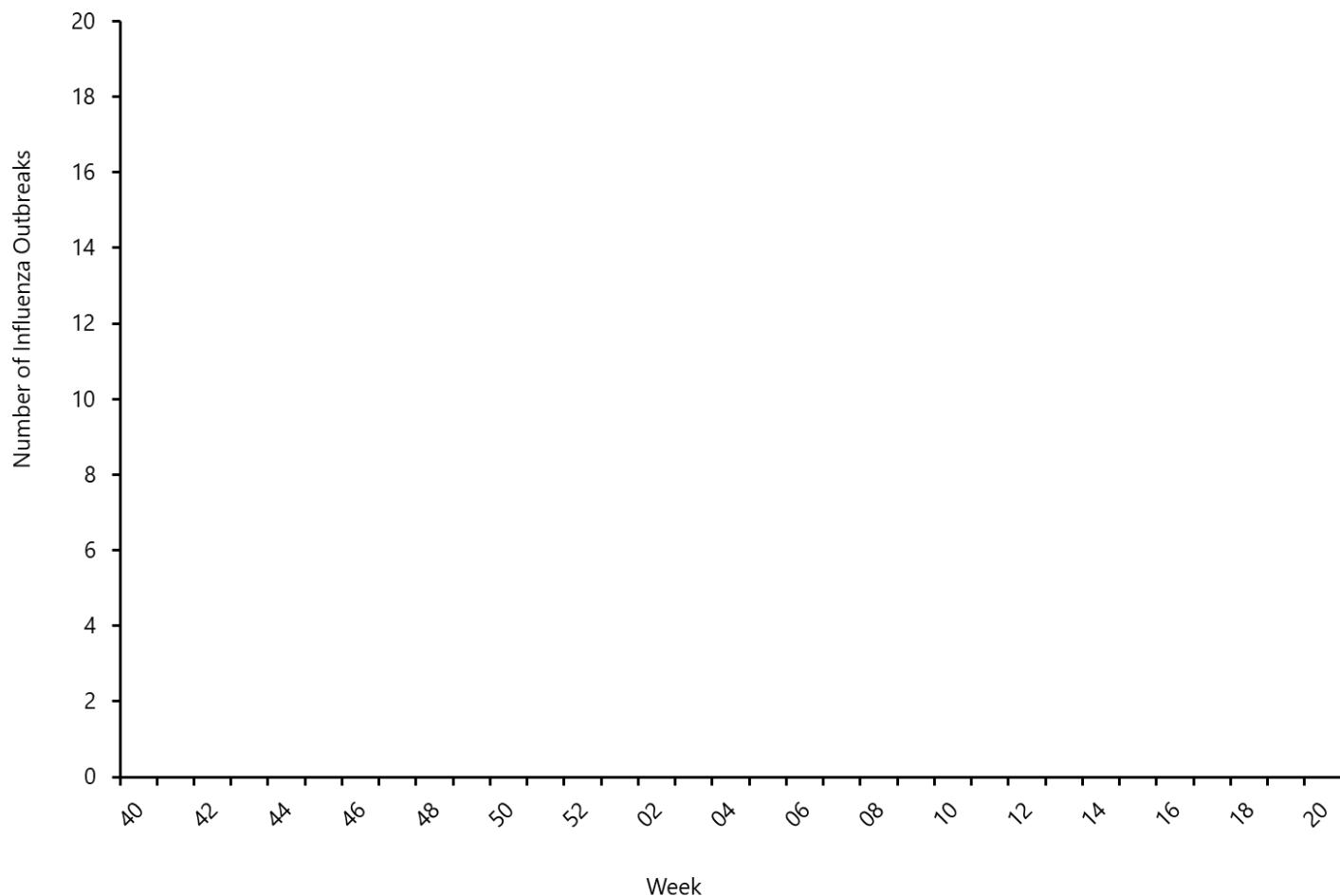
## Influenza Outbreaks

Influenza outbreaks are reportable by law in the state of Georgia.

0 influenza outbreaks were reported for week 11.

A total of 0 laboratory confirmed influenza outbreaks have been reported in Georgia for the 2020-2021 season.

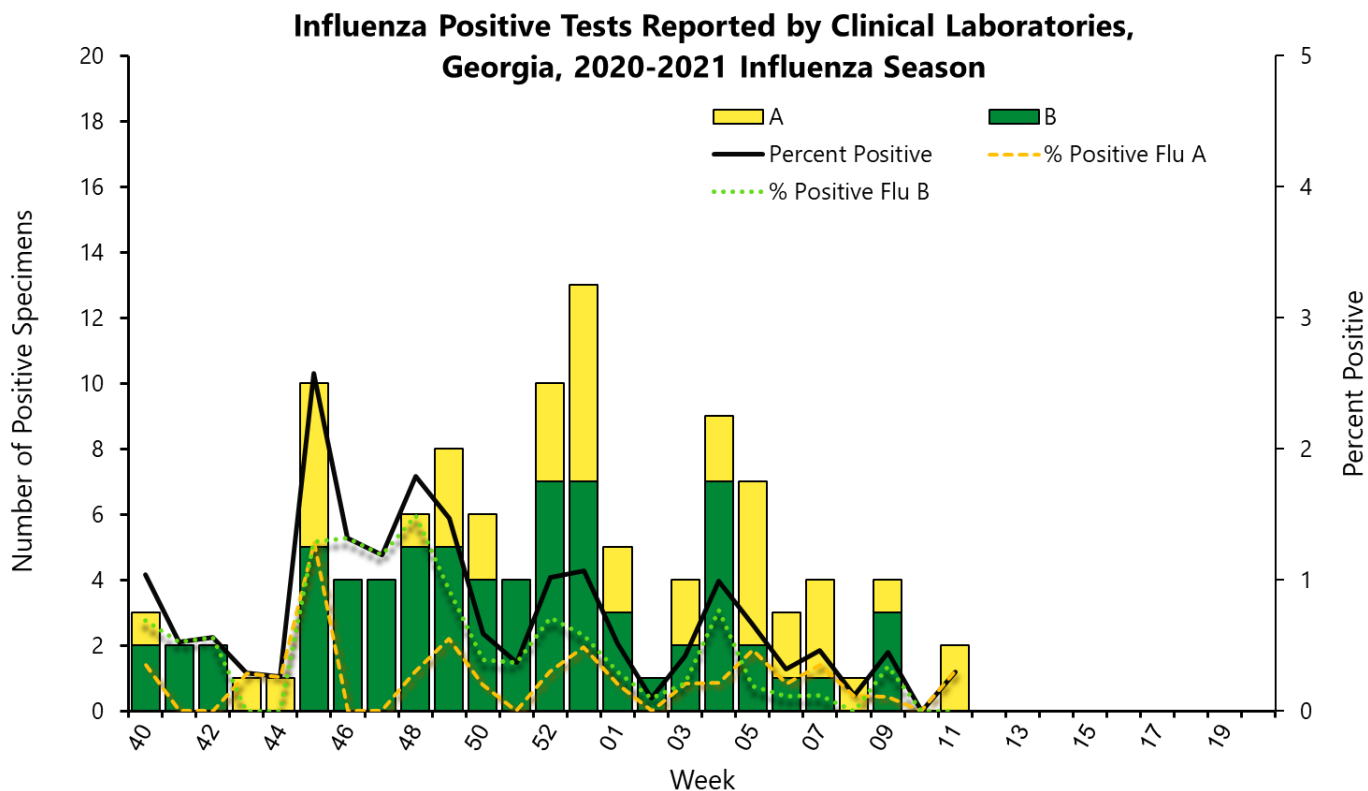
**Number of Laboratory Confirmed Influenza Outbreaks by Week Reported to Public Health, Weekly Georgia, Summary, 2020-2021 Influenza Season**



## Virologic Surveillance

The National Respiratory and Enteric Virus Surveillance System (NREVSS) and World Health Organization (WHO) collaborating laboratories (a combination of clinical and public health laboratories) report the total number of respiratory specimens tested for influenza and the number of positive for influenza, by virus type. Public Health Laboratories provide data about influenza virus subtypes and lineages (next page).

During week 11, clinical laboratories in Georgia reported testing 693 specimens, of which 0.3% were positive for influenza.

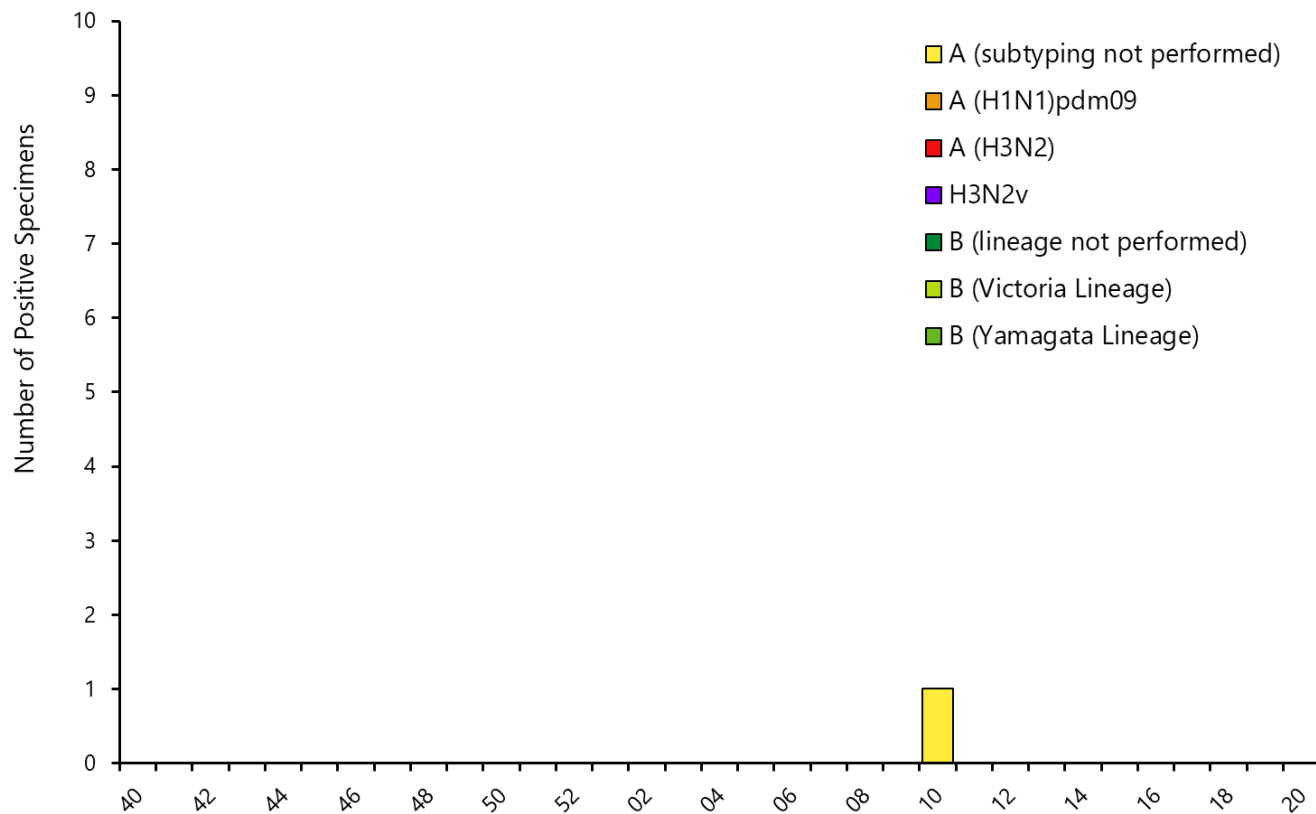


### Summary of Influenza Tests from Clinical Laboratories, Georgia, 2020-2021 Influenza Season

	Week 11	Cumulative Data Since
No. of specimens tested	693	17,596
No. of positive specimens	2	114
<i>Influenza A</i>	2	43
<i>Influenza B</i>	0	71



During week 11, public health laboratories in Georgia reported testing 0 specimens for influenza.



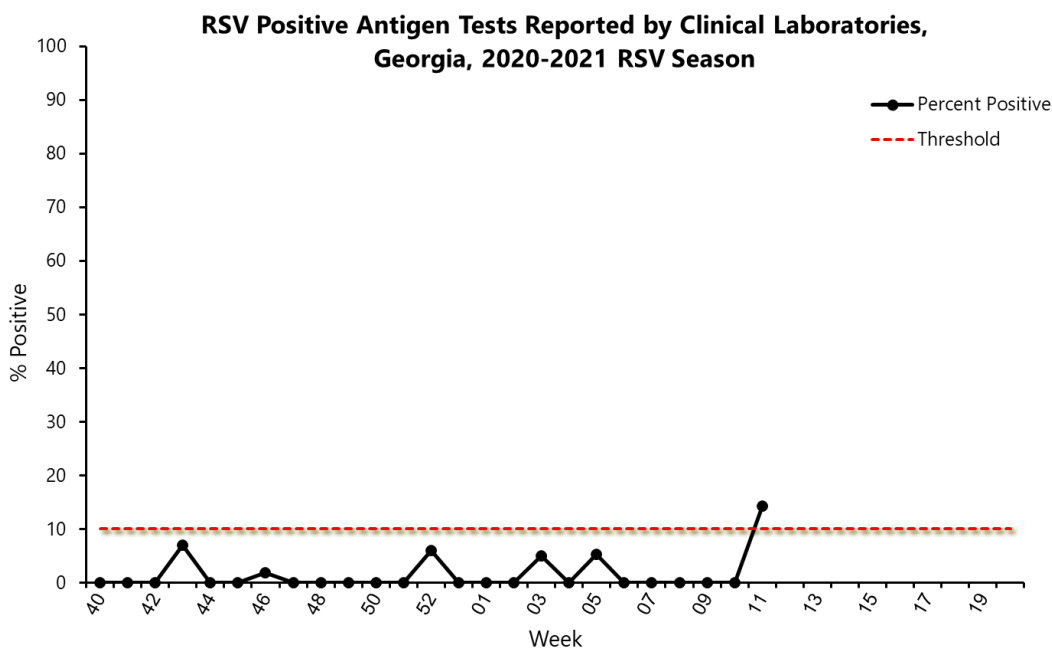
**Summary of Influenza Tests from Public Health Laboratories, Georgia, 2020-2021 Influenza Season**

	Cumulative Data Since Week 40
No. of specimens tested	4,085
No. of Positive Specimens	0
<i>Influenza A (subtype not per-</i>	1
<i>A(H1N1)pmd09</i>	0
<i>H3</i>	0
<i>Influenza B (lineage not per-</i>	0
<i>Yamagata lineage</i>	0
<i>Victoria lineage</i>	0

## Respiratory Syncytial Virus Infection (RSV) Surveillance

Data from NREVSS are also analyzed to measure the RSV seasonality. Antigen and polymerase chain reaction (PCR) tests are analyzed separately to determine the start and end of RSV season. Season onset is defined as the first week of two consecutive weeks when the percent positive of ALL laboratory confirmed tests are greater than or equal a certain threshold. The end is defined as the first week of two consecutive weeks when the percent positive of ALL laboratory confirmed tests are less than a certain threshold. For antigen-based testing, the threshold is 10% and for PCR the threshold is 3%.

During week 11, clinical laboratories in Georgia reported testing 7 specimens with antigen testing methods, 14.3% were positive for RSV.



During week 11, clinical laboratories in Georgia reported testing 621 specimens with **PCR** testing methods, 2.3% were positive for RSV.

