



Georgia Weekly Influenza Report

Updated 12/21/2018

Week 50 (December 9 — December 15, 2018)

Snapshot of Influenza Activity During Week 50:

- **Outpatient Illness Surveillance (ILINet):** The proportion of outpatient visits for ILI was **5.3%**, which is **ABOVE** the regional baseline of 2.2%
- **Activity Indicator Map:** HIGH
- **Geographic Spread of Influenza:** WIDESPREAD
- **Influenza-associated Deaths:** 0 deaths were confirmed
- **Metro Area Hospitalizations:** 84 hospitalizations were reported
- **Influenza Outbreaks:** 4 outbreaks were reported
- **Viral Surveillance:** The percent of specimens testing positive for influenza by clinical laboratories was 22%
- **RSV Season Status:** **ON**

Summary of Select Influenza Surveillance Measures

	Week 50	Cumulative Data since September 30, 2018 (Week 40)
No. of Influenza-associated Deaths	0	4
No. of Metro Area Influenza Hospitalizations	84	259
No. of Influenza Outbreaks	4	6

Contact: Audrey.Kunkes@dph.ga.gov or (404) 463-4625

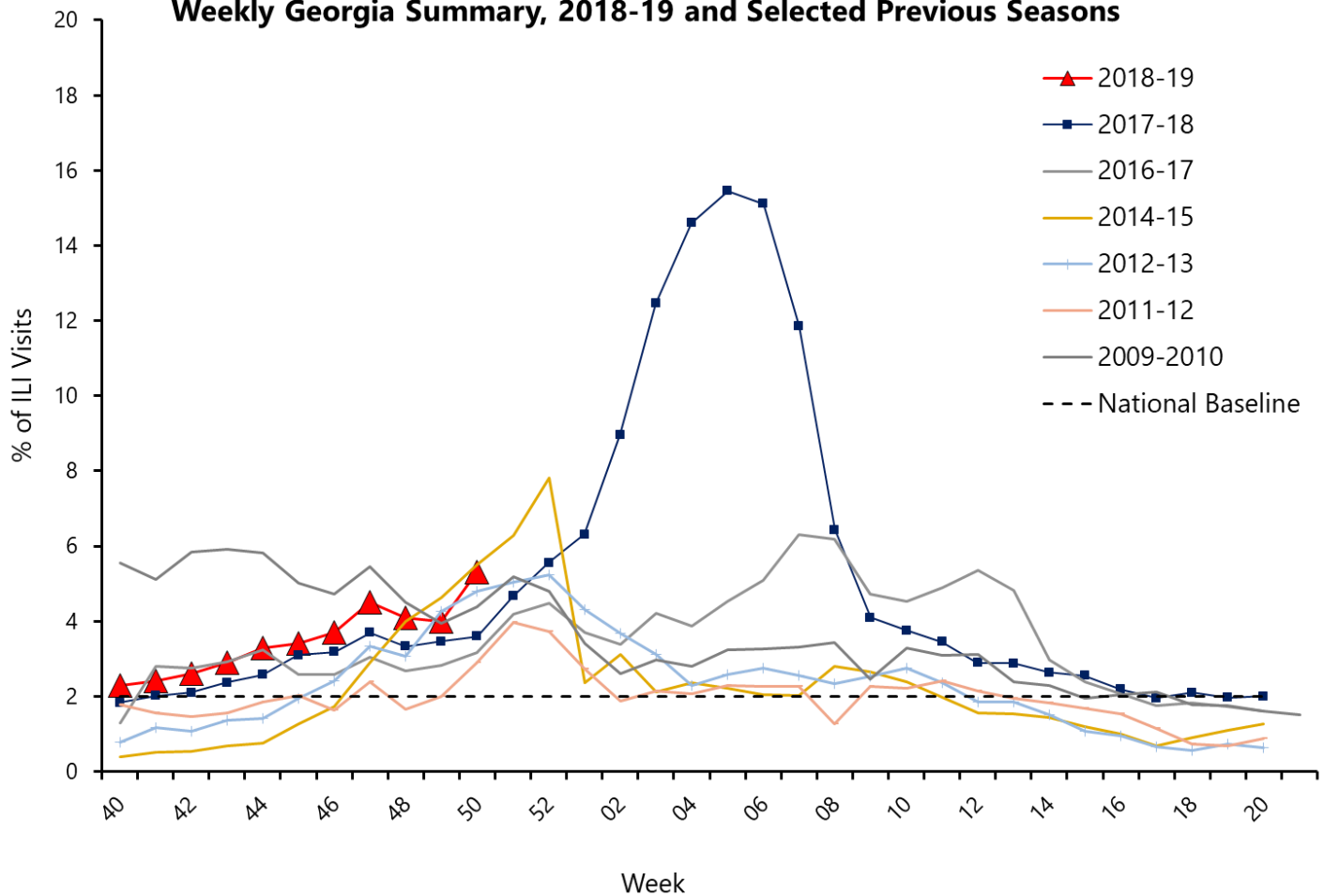
Outpatient Illness Surveillance

In Georgia during week 50, 5.3% of patient visits reported through the U.S. Outpatient Influenza-like Illness Surveillance Network (ILINet) were due to influenza-like illness (ILI). The percentage is above the regional baseline of 2.2%. (ILI is defined as fever (temperature of 100°F [37.8°C] or greater) and cough and/or sore throat.)

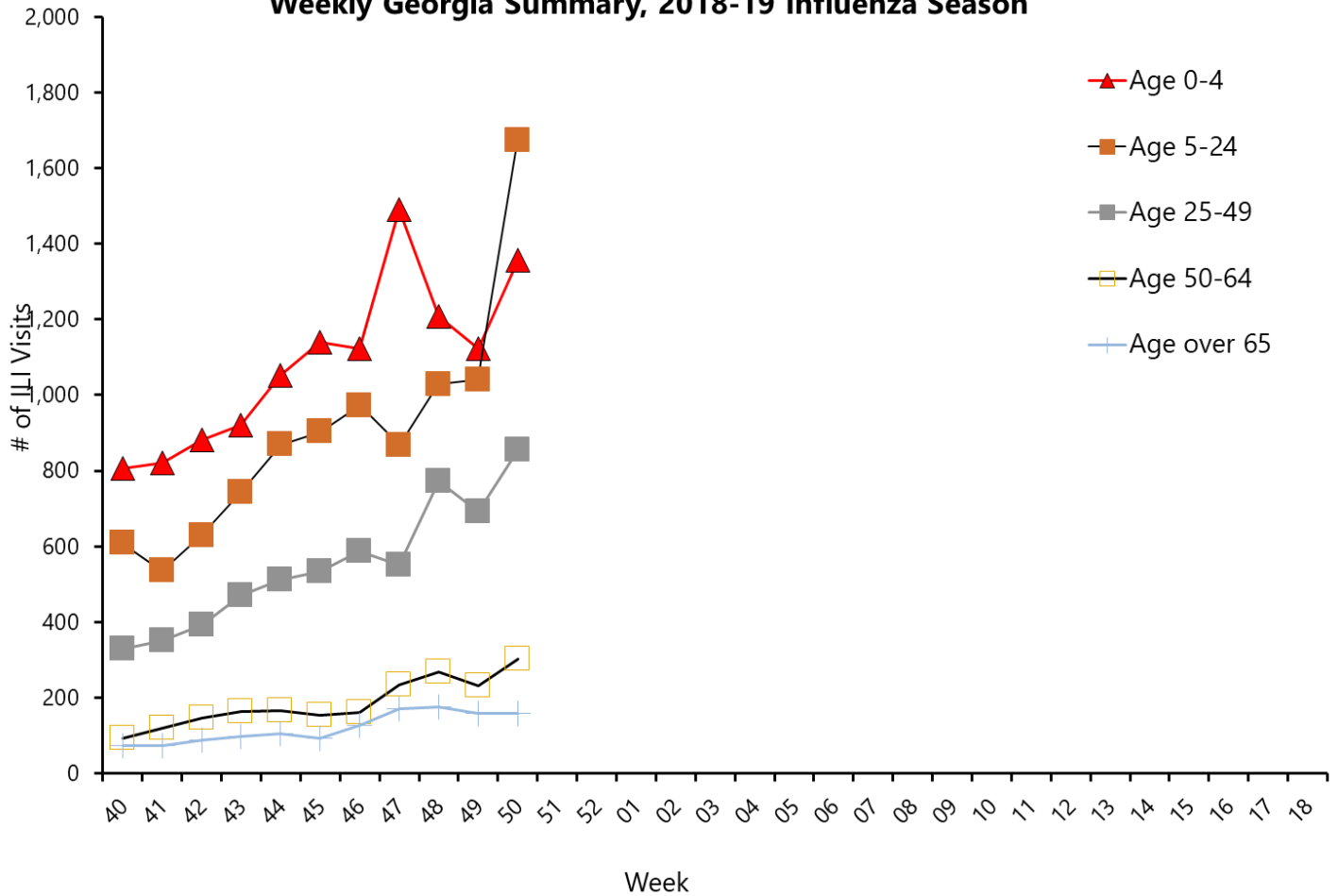
A total of 96 sentinel providers reported data for week 50.

Note: The regional baseline is formulated by averaging ILI percentage during weeks of endemic activity determined by laboratory results for influenza. HHS Region 4 (AL, FL, GA, KY, MS, NC, SC, and TN) (Baseline: 2.2%).

Percentage of Visits for Influenza-like Illness (ILI) Reported by the Outpatient Influenza-like Illness Surveillance Network (ILINet), Weekly Georgia Summary, 2018-19 and Selected Previous Seasons



Number of Visits for Influenza-like Illness (ILI), by Age, Reported by the Outpatient Influenza-like Illness Surveillance Network (ILINet), Weekly Georgia Summary, 2018-19 Influenza Season



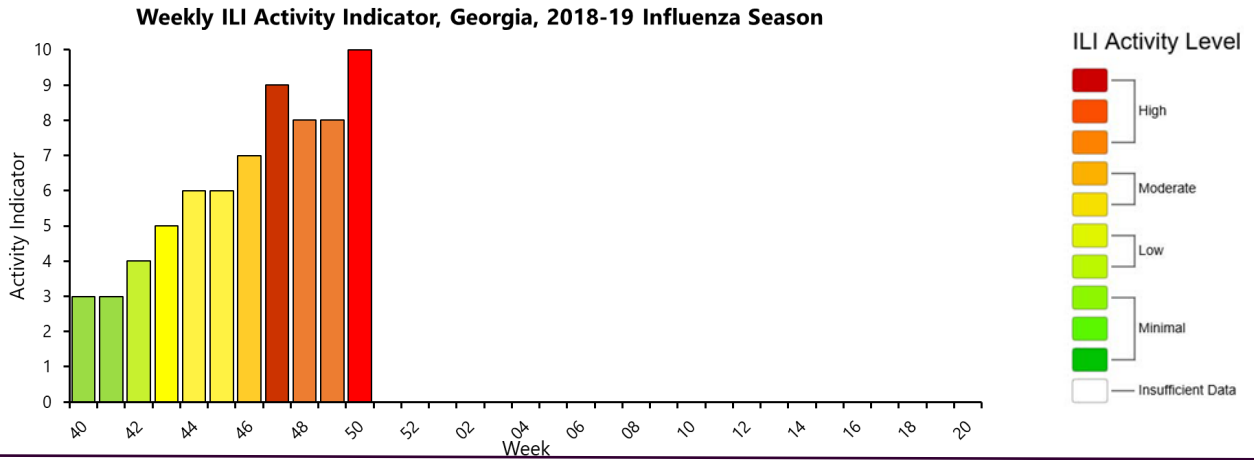
Summary of ILI, by Age, Reported to ILINet, Weekly Georgia, 2018-19 Influenza Season

Age Group in Years	No. of ILI Visits (Week 50)	Cumulative Data since September 30, 2018 (Week 40)
0-4	1,357	11,922
5-17	1,673	9,872
18-49	854	6,048
50-64	303	2,042
65+	160	1,326
Total	4,347	31,210

ILI Activity Indicator

ILI Activity Levels measure ILI activity each week. Activity levels are based on the percent of outpatient visits in Georgia due to ILI compared to the 3 year average of ILI visits during weeks with little or no influenza virus circulation.

During week 50, the activity level in Georgia was **HIGH = 10**

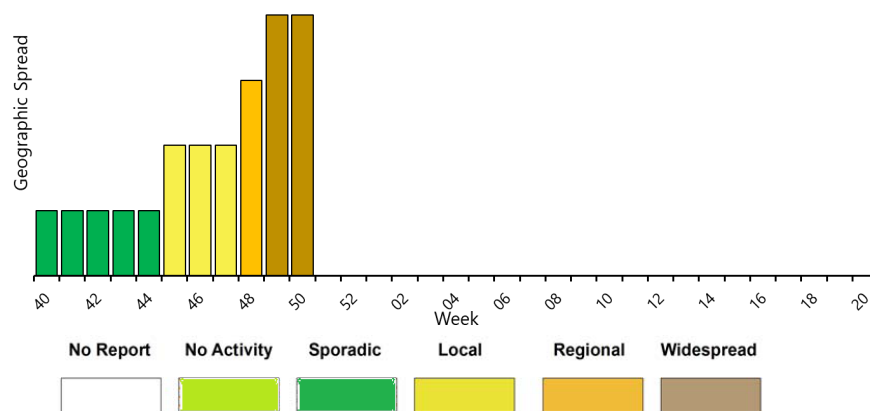


Geographic Spread of Influenza

Geographic spread is measured weekly and reflects geographic dispersion of influenza and is not an indicator of influenza severity.

During week 50, the geographic spread of influenza in Georgia was **WIDESPREAD**

Weekly Influenza Activity Estimates of Geographic Spread, Georgia, 2018-19 Influenza Season



- No Activity:** No laboratory-confirmed cases of influenza and no reported increase in the number of cases of ILI.
- Sporadic:** Small numbers of laboratory-confirmed influenza cases or a single laboratory-confirmed influenza outbreak has been reported, but there is no increase in cases of ILI.
- Local:** Outbreaks of influenza or increases in ILI cases and recent laboratory-confirmed influenza in a single region of the state.
- Regional:** Outbreaks of influenza or increases in ILI and recent laboratory confirmed influenza in at least two but less than half the regions of the state with recent laboratory evidence of influenza in those regions.
- Widespread:** Outbreaks of influenza or increases in ILI cases and recent laboratory-confirmed influenza in at least half the regions of the state with recent laboratory evidence of influenza in the state.

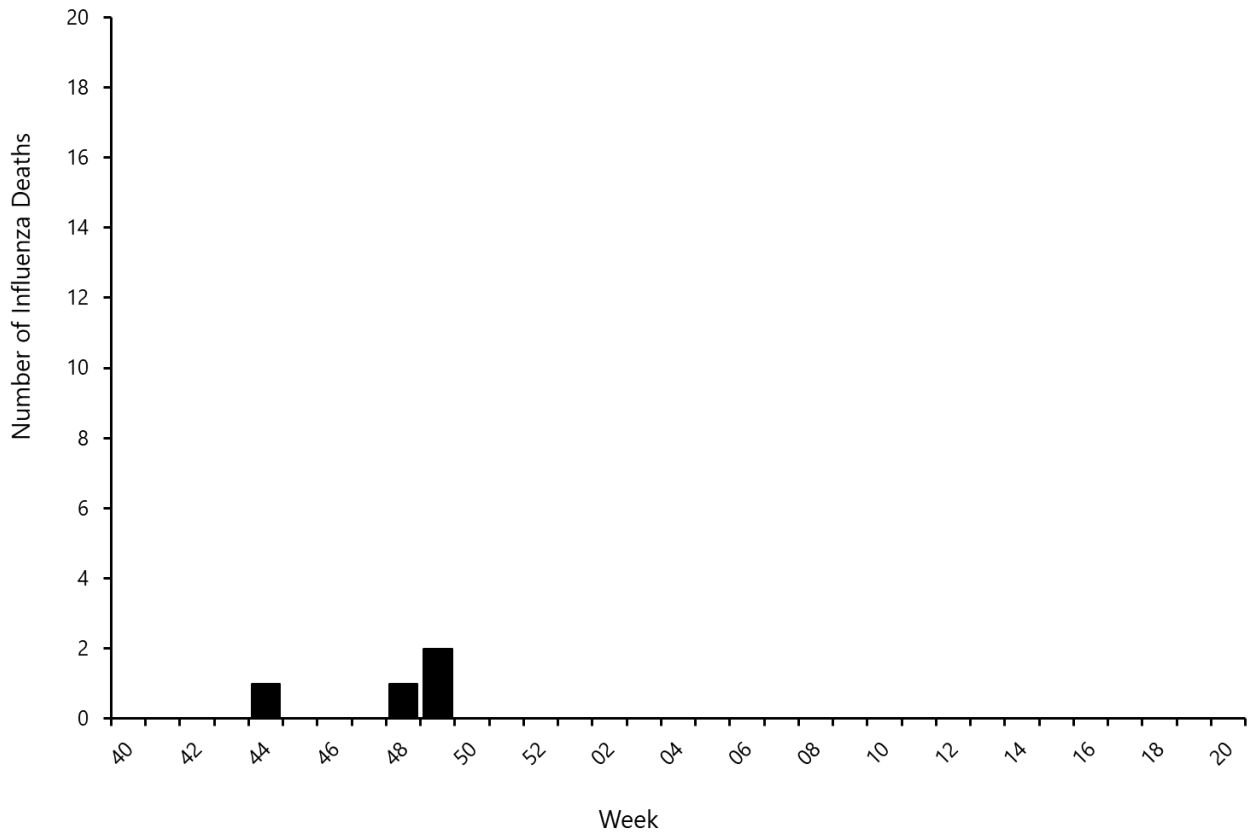
Influenza-Associated Mortality

Influenza-associated deaths (in all ages) are reportable by law in the state of Georgia. To be confirmed as a as influenza-associated death, the person must have a clinically compatible illness, a positive influenza test, no documented recovery between the illness and death.

There were 0 influenza-associated deaths reported in Georgia during week 50.

A total of 4 influenza-associated deaths have been confirmed for the 2018-2019 season.

**Number of Laboratory Confirmed Influenza Deaths by Week of Death: Georgia
Summary, 2018-19 Influenza Season**



Summary of Influenza-associated Deaths, by Age, Georgia, 2018-19 Influenza Season

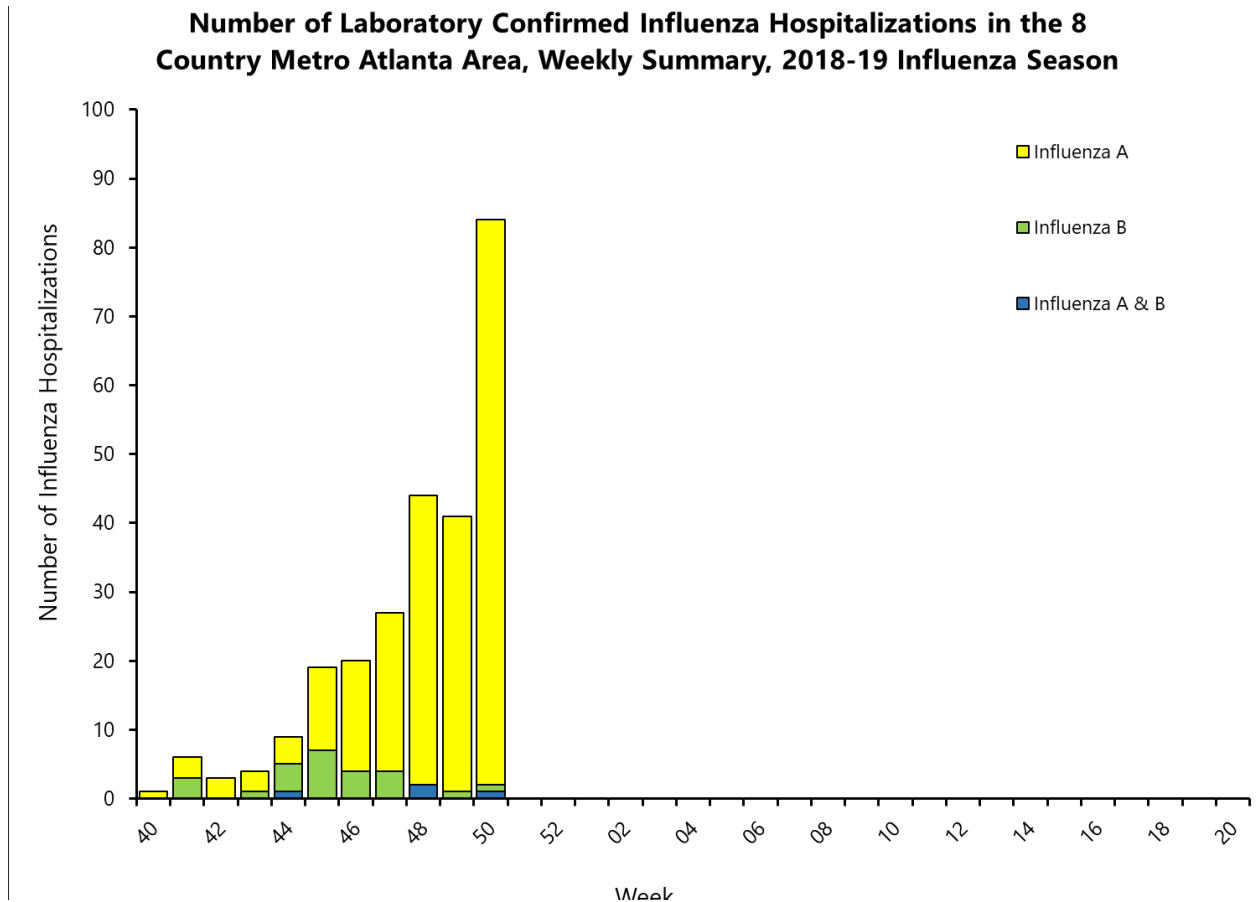
Age Group in Years	No. of Flu Deaths (Data Cumulative since Week 40)
0-4	0
5-17	1
18-49	0
50-64	0
65+	3
Total	4

Influenza-Associated Hospitalizations

The Influenza Hospitalization Surveillance Network (FluSurv-Net) reports laboratory confirmed influenza hospitalizations in the eight county metro Atlanta area (Fulton, DeKalb, Clayton, Cobb, Douglas, Gwinnett, Rockdale, and Newton) for the 2018-2019 influenza season.

There were 84 laboratory confirmed influenza hospitalizations confirmed for week 50.

A total of 259 laboratory confirmed influenza hospitalizations have been reported for the 2018-2019 season.



Summary of Influenza Hospitalizations, by Age, Georgia, 2018-19 Influenza Season

Age Group in Years	No. of Flu Hospitalization (Cumulative Data since Week 40)	Hospitalization Rate (per 100,000 population)
0-4	41	15.32
5-17	45	6.08
18-49	54	2.87
50-64	52	6.90
65+	67	14.73
Total	259	6.32

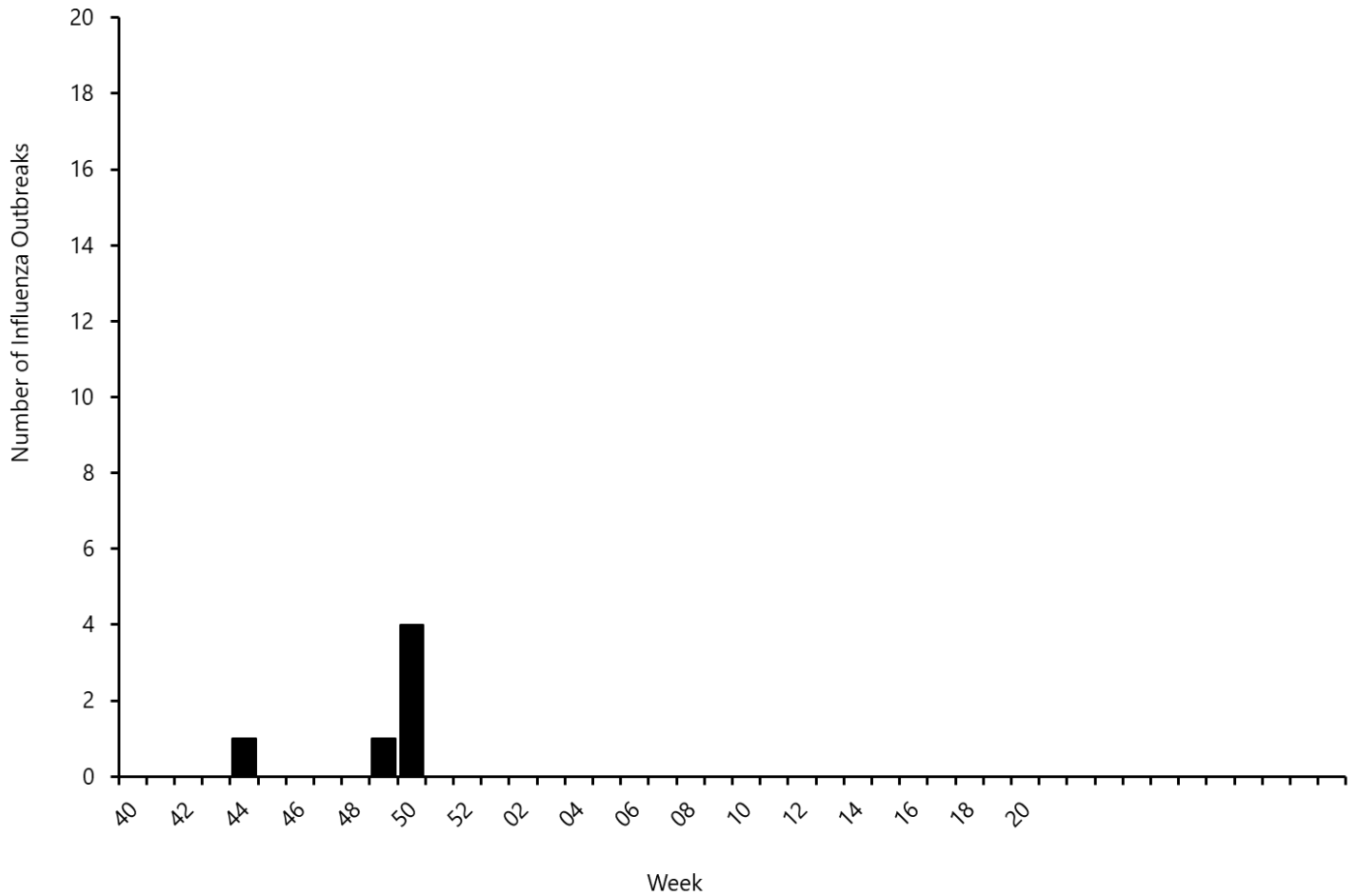
Influenza Outbreaks

Influenza outbreaks are reportable by law in the state of Georgia.

4 influenza outbreaks were reported for week 50.

A total of 6 laboratory confirmed influenza outbreaks have been reported in Georgia for the 2018-2019 season.

Number of Laboratory Confirmed Influenza Outbreaks by Week Reported, Georgia, Summary, 2018-19 Influenza Season

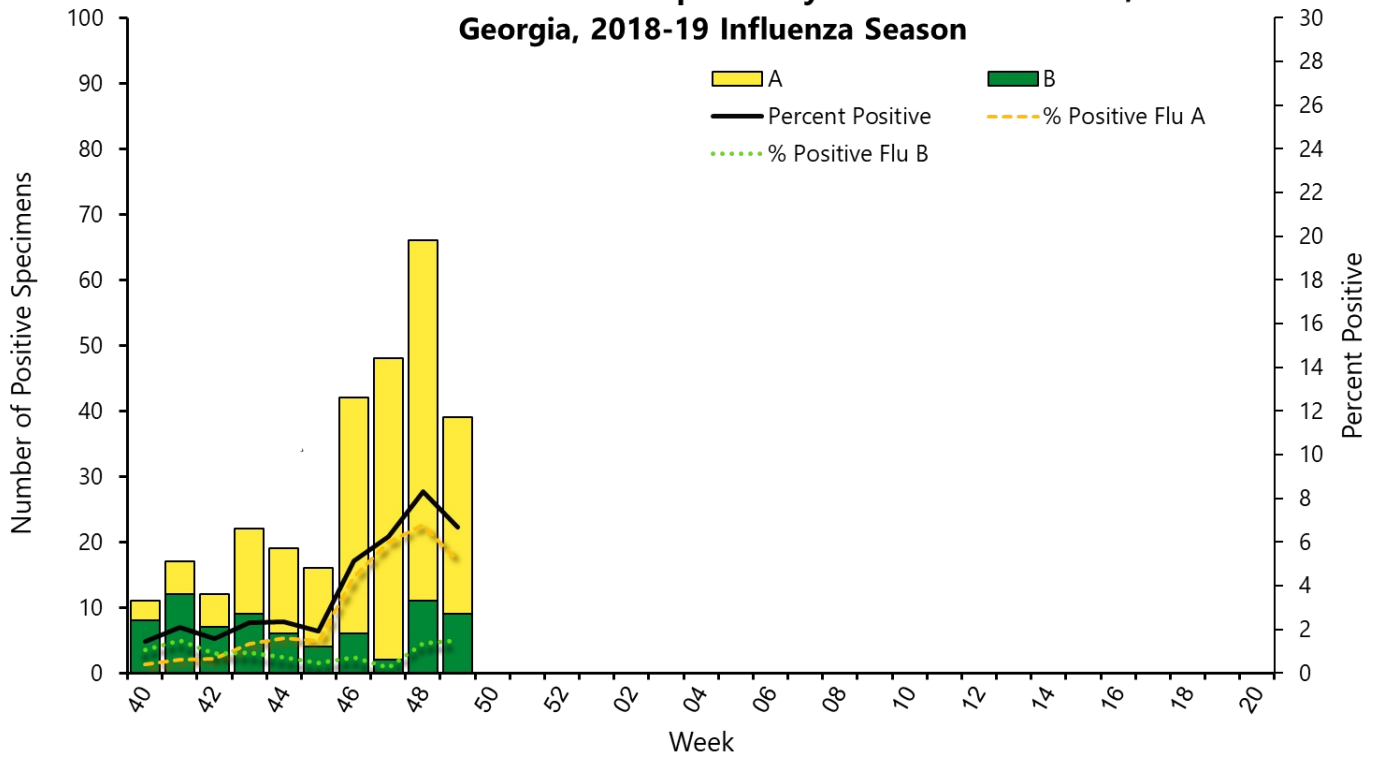


Virologic Surveillance

The National Respiratory and Enteric Virus Surveillance System (NREVSS) and World Health Organization (WHO) collaborating laboratories (a combination of clinical and public health laboratories) report the total number of respiratory specimens tested for influenza and the number of positive for influenza, by virus type. Public Health Laboratories provide data about influenza virus subtypes and lineages (next page).

During week 50, clinical laboratories in Georgia reported testing 1,247 specimens, of which 22% were positive for influenza.

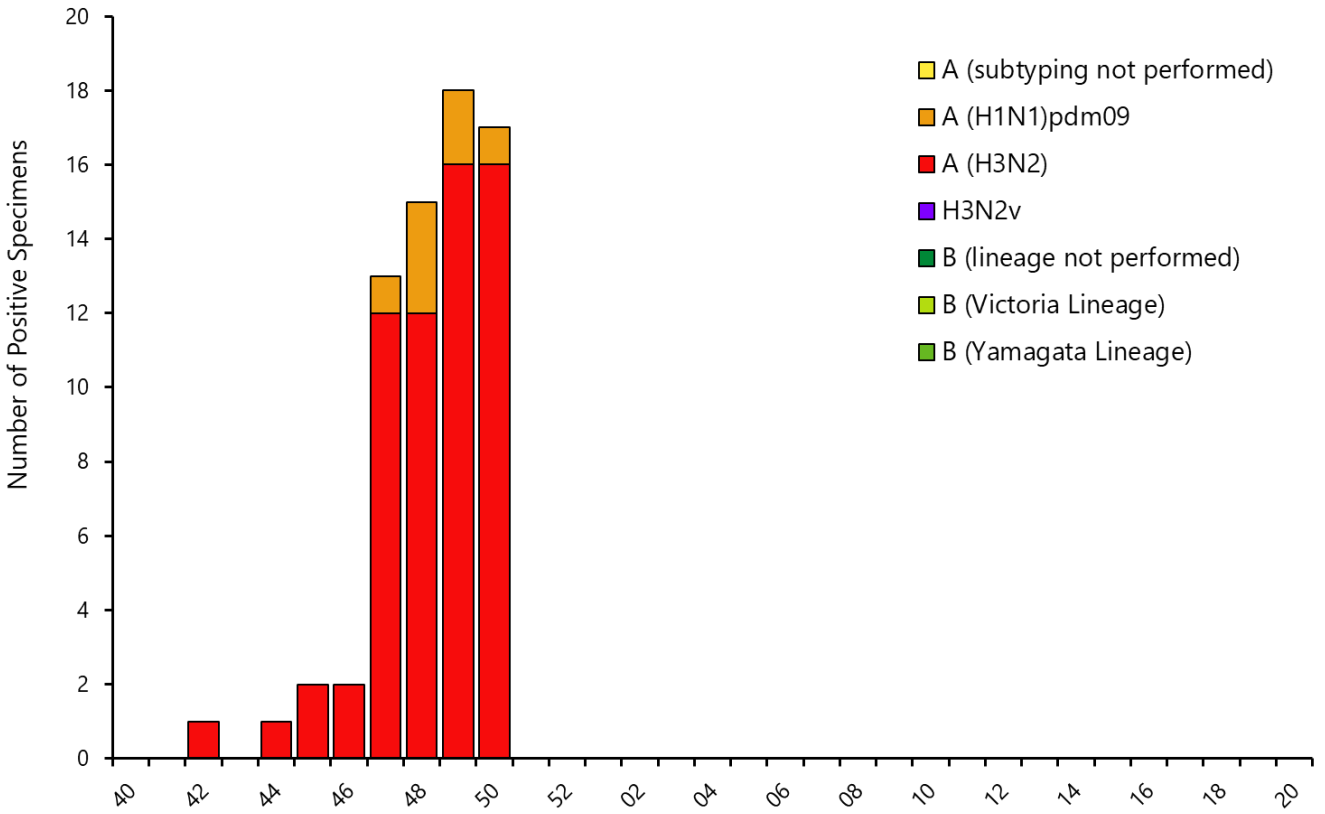
Influenza Positive Tests Reported by Clinical Laboratories, Georgia, 2018-19 Influenza Season



Summary of Influenza Tests from Clinical Laboratories, Georgia, 2018-19 Influenza Season

	Week 50	Cumulative Data Since Week 40
No. of specimens tested	1,247	10,202
No. of positive specimens	270	661
<i>Influenza A</i>	263	574
<i>Influenza B</i>	7	86

During week 50, public health laboratories in Georgia reported testing 29 specimens, and 17 were positive for influenza (1 specimen tested positive for influenza A (H1N1) and 16 specimens tested positive for influenza A (H3N2)).



Summary of Influenza Tests from Public Health Laboratories, Georgia, 2018-19 Influenza Season

	Cumulative Data Since Week 40
No. of specimens tested	276
No. of Positive Specimens	69
<i>Influenza A (subtype not performed)</i>	0
<i>A(H1N1)pmd09</i>	7
<i>H3</i>	62
<i>Influenza B (lineage not performed)</i>	0
<i>Yamagata lineage</i>	0
<i>Victoria lineage</i>	0

Respiratory Syncytial Virus Infection (RSV) Surveillance

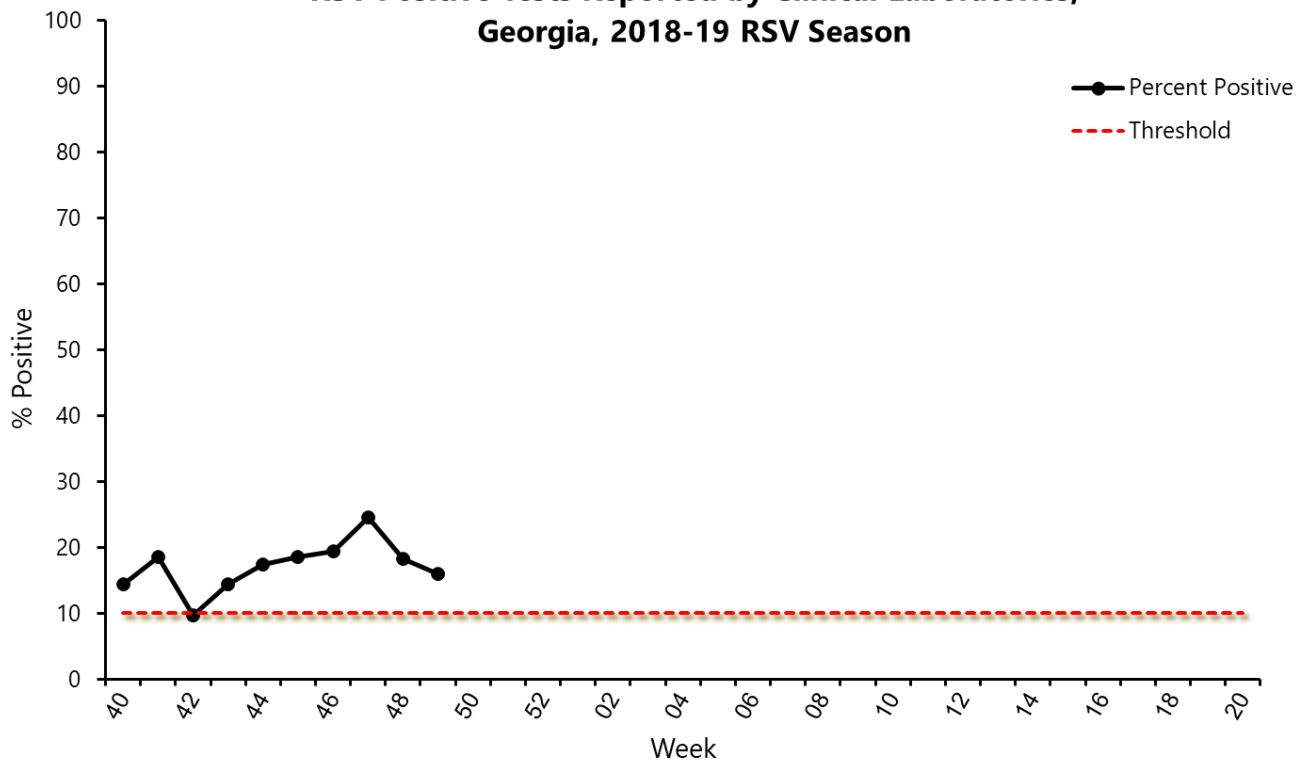
There is a delay in reporting RSV data as the NREVSS database is not available due to upgrading.

Data from NREVSS are also analyzed to measure the RSV seasonality. RSV season onset is defined as the first week of two (2) consecutive weeks when the percent positive of ALL laboratory confirmed tests are greater than or equal to 10%. The end of RSV season is now defined as the first week of two consecutive weeks when the percent positive of ALL laboratory confirmed tests are less than 10%.

RSV Season Status: **ON**

During week 49, clinical laboratories in Georgia reported testing 245 specimens, of which 18% were positive for RSV.

**RSV Positive Tests Reported by Clinical Laboratories,
Georgia, 2018-19 RSV Season**



**Summary of RSV Tests from Clinical Laboratories, Georgia,
2018-19 RSV Season**

	Week 49	Data Cumulative Since Week 40
No. of specimens tested	245	2,183
No. of positive specimens	40	388