

EARLY HEARING ORIENTATION HOME VISIT

01 PHASE

MATERNAL & CHILD HEALTH

Georgia Department of Public Health
2 Peachtree St. NW
Atlanta, GA 30303-3142

PHONE: 404-657-2850

dph.georgia.gov



SIGN LANGUAGE
MILESTONES:

THE

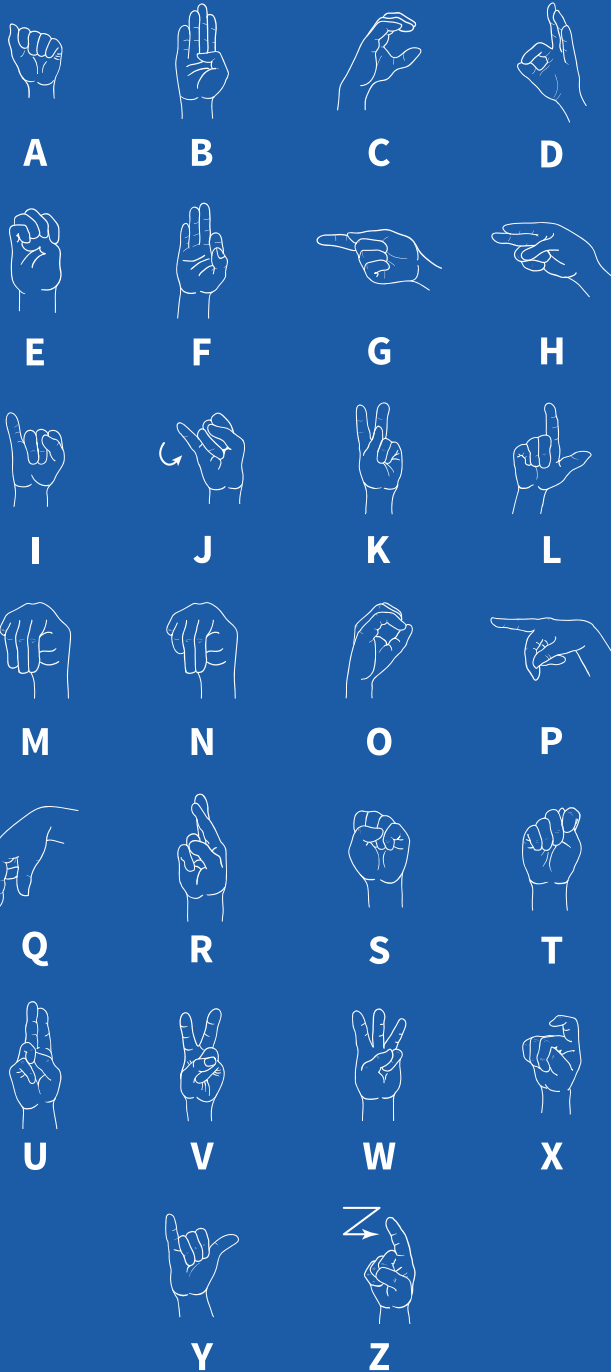
FIRST

YEAR



01





BIRTH - 3 MONTHS

- Looks around with alertness
- Is attracted to any human movement
- Looks attentively at a person's face
- Responds to smiles by smiling back
- Enjoys cuddling and being held
- Plays with hands and fingers

3 - 6 MONTHS

- Smiles, makes eye contact and laughs
- Likes to be held facing out, toward any action that is happening
- Laughs when seeing fingers approaching to tickle
- Is attracted to moving and colorful objects
- Plays with hands and fingers

6 - 9 MONTHS

- Enjoys hand babbling for example opening and closing hands in a rhythm
- Turns head to locate moving objects, and watches signs
- Looks at common objects and family members when named in ASL
- Understands simple ASL words

9 - 12 MONTHS

- Begins hand babbling with various patterns
- Begins to use simple movements with hand shapes

- Points to self and things
- Produces first ASL words with basic hand shapes, such as, "mine", "milk", "mommy"
- Uses a vocabulary of 10 signs



WHAT CAN YOU DO?

- Learn American Sign Language (ASL) and sign to your baby
- Look at your baby when feeding, bathing or changing him or her
- Play with hand shapes and use lots of facial expression with your baby
- Share picture books
- Smile and laugh with your baby
- Sign with your baby to say what you are doing when you feed, bathe, dress him/her
- Show interest in the handshapes and facial expressions your baby makes and repeat them back
- Learn what hand babbling looks like
- Look for first signs and repeat and expand on what your child signs
- Play games such as Patty Cake + Peekaboo

RESOURCES

GA Pines: www.gapines.info

Sign It!: www.mydeafchild.org

Signing Time: www.signingtime.com

ASL University: www.lifeprint.com

Harris Communication: www.harriscomm.com

ASL APPS:

ASL Coach

ASL Fingerspelling

Marlee Signs

Sign Language for

Beginners

WeSign Basic

LO

VE



EARLY HEARING ORIENTATION HOME VISIT

02
PHASE

MATERNAL & CHILD
HEALTH

Georgia Department of Public Health
2 Peachtree St. NW
Atlanta, GA 30303-3142

PHONE: 404-657-2850

dph.georgia.gov



SIGN LANGUAGE
MILESTONES:

THE
SEC
OND
YEAR





1



2



3



4



5



6



7



8



9



0

12 – 18 MONTHS

- Begins to combine signs into simple two-sign sentences, such as “eat more”, “ouch fall”
- Uses touch and gesture to indicate needs and get parents attention
- Ask questions, such as: “yes” or “no” with eyebrows raised
- “What” or “where” with frowned eyebrows
- Points and can sign some letters of the alphabet
- Uses negation – a headshake alone or with negative sign “no” or “can’t”
- Uses up to 40 signs, but understands many more

18 – 24 MONTHS

- Uses 20 or more signs at 18 months
- Combines two or more signs, such as “bath upstairs”, “bye bye daddy”, “stroller outside”, “baby cry”
- Linguistically points to self and others
- Begins to tell stories about the here & now
- Loves ASL stories and stories from books
- Copies actions and facial expressions of characters in a story
- Takes turns talking back and forth with you
- By 24 months, may have a vocabulary of more than 200 words.

WHAT CAN YOU DO?

- Respond to what your child is signing rather than how he or she signs it
- Accept and expand your child’s sign attempts and respond naturally with adult signs
- Sign stories
 - with books
 - without books
 - with made up stories about pictures
- Have a conversation by signing back when your child signs to you
- Use a variety of signs and facial expressions when you have a conversation with your child
- Recognize and respond to the meaning that’s conveyed in your child’s facial expressions
- Act out stories with your child
- Encourage your child to play with other children who use ASL, such as play groups, ASL story circle times
- Have fun playing with your child and communicating about everything in his or her and your world

RESOURCES

GA Pines: www.gapines.info

Sign It!: www.mydeafchild.org

Signing Time: www.signingtime.com

ASL University: www.lifeprint.com

Harris Communication: www.harriscomm.com

ASL APPS:

ASL Coach

ASL Fingerspelling

Marlee Signs

Sign Language for

Beginners

WeSign Basic

