

Georgia Special Supplemental Nutrition Program for
Women, Infants, and Children

Child Formula Algorithm

*Stanley Cohen, MD, Jay Hochman, MD, Kyla Crane, RDN, LD, and
Denice Vance, MS, RD, LD, CLC*

In accordance with Federal civil rights law and U.S. Department of Agriculture (USDA) civil rights regulations and policies, the USDA, its Agencies, offices, and employees, and institutions (State or local) where they applied for benefits. Individuals who are deaf, hard of hearing or have speech disabilities may contact USDA through the Federal Relay Service at (800) 877-8339. Additionally, program information may be made available in languages other than English. To file a program complaint of discrimination, complete the USDA Program Discrimination Complaint Form, (AD-3027) found online at: http://www.ascr.usda.gov/complaint_filing_cust.html, and at any USDA office, or write a letter addressed to USDA and provide in the letter all of the information requested in the form. To request a copy of the complaint form, call (866) 632-9992. Submit your completed form or letter to USDA by: (1) mail: U.S. Department of Agriculture, Office of the Assistant Secretary for Civil Rights, 1400 Independence Avenue, SW, Washington, D.C. 20250-9410; (2) fax: (202) 690-7442; or (3) email: program.intake@usda.gov. This institution is an equal opportunity provider.



American Academy of Pediatrics

DEDICATED TO THE HEALTH OF ALL CHILDREN™



Georgia Chapter

This project was funded through the WIC Federal grant from USDA Food and Nutrition Services. Published 2018.

Georgia Special Supplemental Nutrition Program for Women, Infants, and Children Child Formula Algorithm

Tier 1

Standard Milk Package

Tier 2

Milk Alternatives

Tier 3

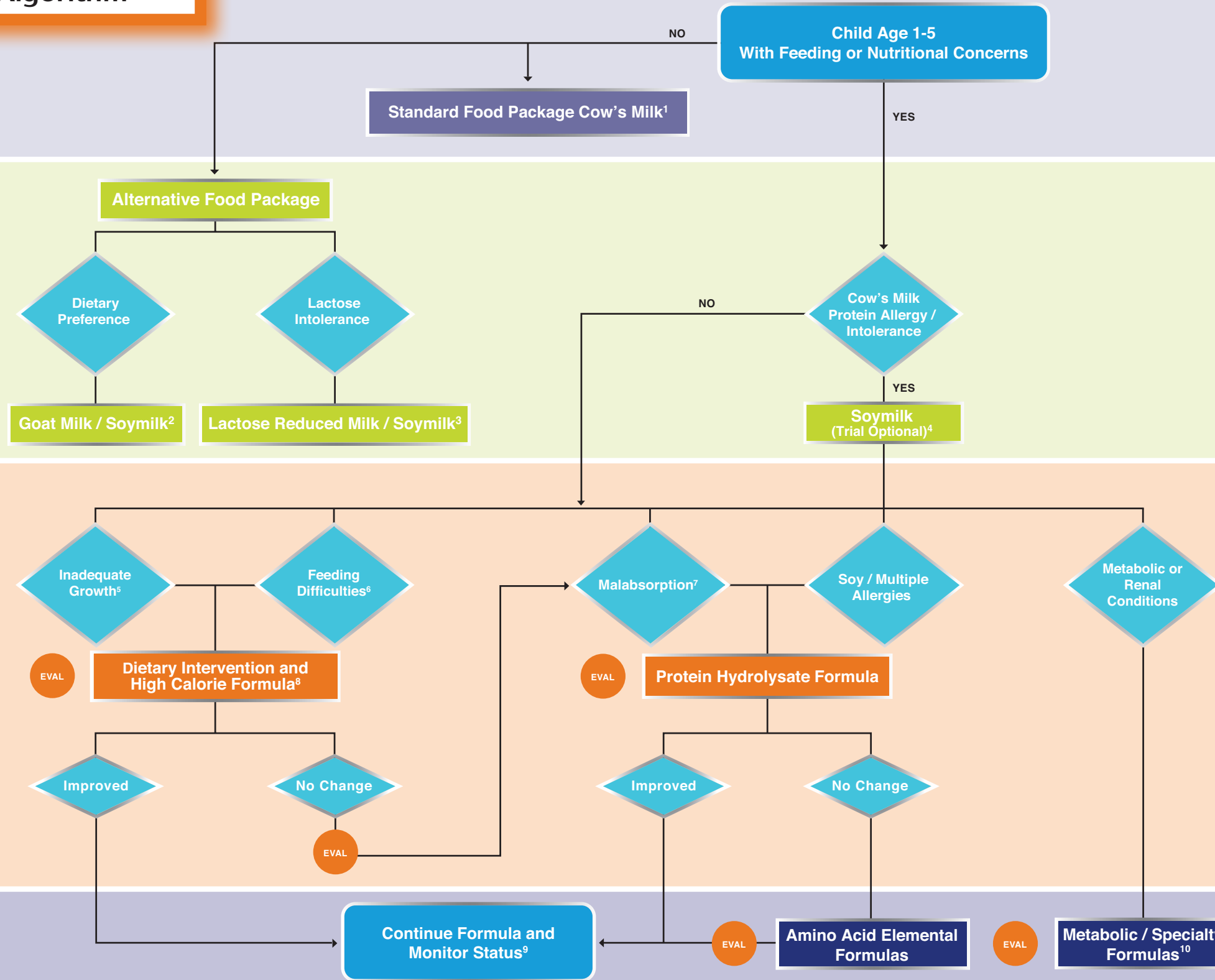
Medical Documentation Required

- Protein Hydrolysate Formulas
- Enteral Nutrition
- High Calorie Formulas

Tier 4

Medical Documentation Required

- Amino Acid / Peptide Formulas
- Metabolic / Specialty Formulas



Legend

Start / Finish

Tier 1 Action/Process

Tier 2 Action/Process

Tier 3 Action/Process

Tier 4 Action/Process

Decision

*Evaluation



American Academy of Pediatrics

DEDICATED TO THE HEALTH OF ALL CHILDREN™



Georgia Chapter

The Child Formula Algorithm and Resource Guide was developed by Stanley Cohen, MD, FAAP; Jay Hochman, MD, FAAP; Kyliya Crane, RDN, LD; and Denise Vance, MS, RD, LD through the Georgia Special Supplemental Nutrition Program for Women, Infants and Children (WIC) and Georgia Chapter of the American Academy of Pediatrics partnership. The project was funded by the WIC federal grant from USDA Food and Nutrition Services. This algorithm and resource guide may be reproduced with written permission from Georgia WIC and acknowledgement of authorship.

1. The Georgia WIC Program provides whole milk to children age 1-2 years old, and low-fat milk for all children over the age of 2. The Georgia WIC Approved Foods List provides details of items eligible for the Standard Food Package and Alternative Food Packages. The current publication of the Georgia WIC Approved Foods List is available at, wic.ga.gov.
 2. Soymilk can be used as an alternative to cow's milk and provides sufficient protein. Other milk alternatives, such as rice and almond milk, tend to have lower protein content. The United States Department of Agriculture (USDA) does not approve rice or almond milk for use in the WIC Program. Most available goat milk does not provide sufficient amounts of folate and is not recommended. However, Georgia WIC provides folate fortified goat milk in whole, low-fat, and evaporated options to meet dietary and cultural needs.
 3. Lactose intolerance is an infrequent issue for children under age 5. Lactose reduced milk is not recommended for cow's milk protein allergies as it still contains milk proteins. As an additional option, soymilk is also lactose free.
 4. Studies demonstrate that 10-14% of infants with cow's milk protein allergy also have reactions to soy. Those who have non-IgE

reactions to cow's milk may have a 40% cross reactivity to soy. Thus, the majority of infants are likely to tolerate soy. This allows most children to use soymilk safely and with less expense than immediately employing an extensively hydrolyzed casein formula. Goat milk is not recommended for children with cow's milk protein allergy. In studies, the risk of allergy (resulting in symptoms) to goat milk in a person with cow's milk protein allergy is about 90%.
 5. Inadequate growth may present as underweight (weight for height or Body Mass Index (BMI) less than the 5th percentile for age), no weight gain for greater than 3 months, or failure to thrive, and may be seen with cardiovascular or pulmonary conditions.
 6. Feeding difficulties may include decreased intake, neurodevelopmental delays, oral motor issues, textural issues, autism spectrum disorders, and tube feeding. When tube feeding is indicated, a pediatric gastroenterologist and a dietitian with experience in pediatrics should work with the family to determine nutritional needs and a feeding route that works best for the patient. A full listing of the Georgia WIC approved enteral products which includes intact proteins, blenderized, elemental, calorie dense, and reduced calorie formulas are available on the Georgia WIC website, wic.ga.gov under "Formula Resources".

7. Formulas high in medium-chain triglyceride (MCT) oils are helpful for many conditions that cause malabsorption. These formulas are also indicated in cardiovascular and pulmonary disorders, chylous effusions, and for some forms of liver disorders.
 8. Dietary intervention is vital for children with feeding difficulties and inadequate growth. Unless contraindicated, increasing calories from food should be the first step considered before using a commercially available, high calorie formula to supplement the child's diet. Dietary intervention may involve a feeding therapy program or specialized interdisciplinary team to address the many facets of feeding difficulties.
 9. When a patient is doing well on an amino acid formula, it is reasonable to offer a trial of a protein hydrolysate formula to assess tolerance.
 10. All Georgia WIC approved formulas, including metabolic and specialty formulas for chronic conditions, are available on the Georgia WIC website, wic.ga.gov under "Formula Resources".
 * Evaluations should be directed by the pediatrician/primary care provider and can include subspecialty care.

Georgia WIC Child Formula Algorithm - Resource Guide

Stanley Cohen, MD, Jay Hochman, MD & Kyla Crane, RDN, LD

Tier	Product Category	WIC Approved Milk or Specialty Formula	Manufacturer/Distributor	Form	Size	Flavor	Composition	Medical Documentation Required	Indication/ICD-10
Tier 1	Cow's Milk*	Least Expensive Brand	N/A	Fluid	Gallon or ½ gallon	N/A	Milk protein, Vitamin A, and Vitamin D	No	Healthy children with no nutritional or feeding concerns
				Dry/powdered (non-fat/low-fat only)	3-quart box				
				Evaporated	12 oz.				
				Shelf stable/ Ultra-high temperature	8 oz.				
Tier 2	Soy-based Beverages*	8th Continent Soy milk	Stremick's Heritage Foods	Fluid	½ gallon	Original and Vanilla	Gluten free, lactose free, and cow's milk protein free	No	Dietary preference Kosher or Halal Vegetarian or vegan Cow's milk allergy/Z91.011 Lactose intolerance/E73.9 Galactosemia/E74.21
		Silk Soy milk	White Wave Foods	Fluid	½ gallon	Original			
		Great Value Soy milk	Walmart	Fluid	½ gallon	Original			
	Goat Milk*	Meyenberg Goat Milk	Meyenberg	Fluid	1 quart	N/A	Milk protein, Vitamin D fortified, and supplemented with Folic Acid (Low-fat is fortified with vitamin A)	No	Dietary preference Gluten Free Kosher
				Evaporated	12 oz.				
Lactose Reduced Milk*	Least Expensive Brand	N/A	Fluid	Gallon, ½ gallon, or 96 ounce (3 quart)	N/A	Milk protein, calcium and Vitamin D fortified	No	Lactose intolerance/E73.9	
Tier 3	Protein Hydrolysate	Nutramigen with Enflora LGG Toddler	Mead Johnson	Powder	12.6 oz.	Unflavored	Hypoallergenic, lactose, sucrose, and galactose-free; contains probiotic Lactobacillus rhamnosus GG (LGG)	Yes	Cow's milk allergy/Z91.011 Soy allergy/Z91.018 Food protein induced enterocolitis syndrome (FPIES)/K52.21 Malabsorption/K90.49 Recommended for ages 9-36 months
	Enteral Nutrition	Compleat Pediatric	Nestlé	RTF	8.45 oz.	Unflavored	Blenderized, lactose-free, nutritionally complete, MCT oil, and made from food	Yes	Tube feeding/Z93.1 GI impairment/K92.9 Oral motor feeding aversions/ F98.29 Malnutrition/E46 Not recommended for oral intake
		Compleat Pediatric Reduced Calorie (0.6)	Nestlé	RTF	8.45 oz.	Unflavored			Tube feeding/Z93.1 GI impairment/K92.9 Oral motor feeding aversions/ F98.29 Weight management Not recommended for oral intake

* The Georgia Special Supplemental Nutrition Program for Women, Infants, and Children (WIC) provides whole milk to children ages 1-2 years, and low-fat 1% or skim milk to children 2-5 years of age. Reduced fat, 2% milk is not available through the Georgia WIC Program.

Tier	Product Category	WIC Approved Milk or Specialty Formula	Manufacturer/Distributor	Form	Size	Flavor	Composition	Medical Documentation Required	Indication/ICD-10
Tier 3 (Continued)	Enteral Nutrition (Continued)	Nutren Junior	Nestlé	RTF	8.45 oz.	Vanilla	50% Whey protein, lactose-free, gluten-free, MCT oil, and nutritionally complete formula.	Yes	Tube Feeding/Z93.1 GI impairment/K92.9 Failure to thrive (FTT)/R62.51 Malnutrition/E46 Oral or tube feeding supplement
		Nutren Junior Fiber	Nestlé	RTF	8.45 oz.	Vanilla	50% Whey protein, lactose-free, gluten-free, MCT oil, PREBIO1™ soluble fiber and insoluble fiber blend, and nutritionally complete formula.		Tube Feeding/Z93.1 GI impairment/K92.9 Failure to thrive (FTT)/R62.51 Malnutrition/E46 Bowel management Oral or tube feeding supplement
		PediaSure Enteral 1.0	Abbott	RTF	8 oz.	Vanilla	Milk protein, lactose-free, kosher, halal, gluten-free, nutritionally complete, with MCT oil	Yes	Tube Feeding/Z93.1 GI Impairment/K92.9 Failure to Thrive (FTT)/R62.51 Oral motor feeding aversions/ F98.29 Neurodevelopmental disorders/ R62.50 Not recommended for oral intake
		PediaSure Enteral 1.0 with Fiber	Abbott	RTF	8 oz.	Vanilla	Milk protein, lactose-free, short-chain fructo-oligosaccharides (scFOS), kosher, halal, gluten-free, nutritionally complete, with MCT oil	Yes	Tube Feeding/Z93.1 GI Impairment/K92.9 Failure to Thrive (FTT)/R62.51 Oral motor feeding aversions/F98.29 Neurodevelopmental disorders/R62.50 Not recommended for oral intake Added fiber indicated for bowel management
	High Calorie	Boost Kid Essentials 1.0	Nestlé	RTF	8 oz.	Chocolate Strawberry Vanilla	Milk protein, Lactose-free, gluten-free, kosher, nutritionally complete, and contains MCT oil	Yes	Failure to Thrive (FTT)/R62.51 Tube feeding/Z93.1 Oral motor feeding aversions/F98.29 Neurodevelopmental disorders/R62.50 Oral or tube feeding supplement
		Boost Kid Essentials 1.5	Nestlé	RTF	8 oz.	Chocolate Strawberry Vanilla	Milk protein, Lactose-free, gluten-free, kosher, nutritionally complete, and contains MCT oil	Yes	Failure to Thrive (FTT)/R62.51 Tube feeding/ Z93.1 Oral motor feeding aversions/F98.29 Neurodevelopmental disorders/R62.50 Oral or tube feeding supplement

Tier	Product Category	WIC Approved Milk or Specialty Formula	Manufacturer/Distributor	Form	Size	Flavor	Composition	Medical Documentation Required	Indication/ICD-10
Tier 3 (Continued)	High Calorie (Continued)	Boost Kid Essentials 1.5 with fiber	Nestlé	RTF	8 oz.	Vanilla	Milk protein, Lactose-free, gluten-free, kosher, nutritionally complete, and contains MCT oil	Yes	Failure to Thrive (FTT)/R62.51 Tube feeding/Z93.1 Oral motor feeding aversions/F98.29 Neurodevelopmental disorders/R62.50 Oral or tube feeding supplement bowel management
		Bright Beginnings Soy Pediatric Drink	PBM Products	RTF	8 oz.	Vanilla	Soy protein, lactose-free, gluten-free DHA and prebiotics, and nutritionally complete	Yes	Failure to Thrive (FTT)/ R62.51 Tube feeding/Z93.1 Oral motor feeding aversions/F98.29 Neurodevelopmental disorders/R62.50 Oral or tube feeding supplement
		Carnation Breakfast Essentials	Nestlé	RTF (powdered not approved)	237 ml	Chocolate Strawberry Vanilla	Milk protein, soy protein, and purified stevia leaf extract	Yes	Failure to Thrive (FTT)/ R62.51 Tube feeding/Z93.1 Oral motor feeding aversion/F98.29 Neurodevelopmental disorders/R62.50
		PediaSure Grow & Gain	Abbott	RTF	8 oz.	Banana Berry Chocolate Strawberry Vanilla	Milk protein, lactose-free, gluten-free, Kosher, Halal, DHA and prebiotic scFOS, and nutritionally complete	Yes	Failure to Thrive (FTT) R62.51 Tube feeding Z93.1 Oral motor feeding aversions/F98.29 Neurodevelopmental disorders/R62.50 Oral or tube feeding supplement
		PediaSure Grow & Gain with fiber				Strawberry Vanilla			
Tier 4	Amino Acid/Elemental	Alfamino Junior	Nestlé	Powder	14.1 oz.	Unflavored	Hypoallergenic amino acid based elemental, 65% of fat is MCT oil	Yes	Malabsorption syndrome/ K90.4 GI impairment/ K92.9 Severe allergy to cow's milk/ Z91.011 Soy Allergy/ Z91.018 Multiple food protein intolerance/ K52.21 FPIES/ K52.21 Short bowel syndrome/ K91.2 Necrotizing enterocolitis/ K55.30 Eosinophilic esophagitis/ K20.0 Oral or tube feeding supplement
		Elecare Jr	Abbott	Powder	14.1 oz.	Unflavored Vanilla Chocolate Banana	Hypoallergenic amino acid-based, nutritionally complete, lactose free, 33% MCT oil	Yes	Malabsorption/ K90.4 GI impairment/ K92.9 FPIES/ K52.21 Short bowel syndrome/K91.2 Eosinophilic esophagitis/ K20.0 Severe cow's milk allergy/ Z91.011 Soy allergy/ Z91.018 Multiple food protein intolerance/ K52.21

Tier	Product Category	WIC Approved Milk or Specialty Formula	Manufacturer/Distributor	Form	Size	Flavor	Composition	Medical Documentation Required	Indication/ICD-10
Tier 4 (Continued)	Amino Acid/ Elemental (Continued)	Neocate Jr	Nutricia	RTF	14 oz.	Unflavored Chocolate Tropical	Hypoallergenic, nutritionally complete, 100% nonallergenic free amino-acids, and MCT oil	Yes	Malabsorption/ K90.4 GI Impairment/ K92.9 FPIES/ K52.21 Short bowel syndrome/ K91.2 Eosinophilic esophagitis/ K20.0 Severe cow's milk allergy / Z91.011 Soy allergy/ Z91.018 Multiple food protein intolerance/ K52.21 Oral or tube feeding supplement
		Neocate Jr with Prebiotics	Nutricia	RTF	14 oz.	Unflavored Tropical Vanilla Strawberry	Hypoallergenic, nutritionally complete, 100% nonallergenic free amino-acids, prebiotic fiber, and MCT oil	Yes	Malabsorption/ K90.4 GI Impairment/ K92.9 FPIES/ K52.21 Short bowel syndrome/ K91.2 Eosinophilic esophagitis/ K20.0 Severe cow's milk allergy/ Z91.011 Soy allergy/ Z91.018 Multiple food protein intolerance/K52.21 Oral or tube feeding supplement
		Neocate Splash	Nutricia	RTF	8 oz.	Unflavored Grape Tropical Fruit Orange Pineapple	Lactose, whey, soy and milk protein-free elemental 100% free amino acids, hypoallergenic, nutritionally complete, and MCT oil	Yes	Malabsorption/ K90.4 GI Impairment/ K92.9 FPIES/ K52.21 Short bowel syndrome/ K91.2 Eosinophilic esophagitis/ K20.0 Severe allergy to cow's milk/ Z91.011 Multiple food protein intolerance/ K52.21 Oral or tube feeding supplement
		PediaSure Peptide 1.0	Abbott	RTF	8 oz.	Vanilla Strawberry Unflavored	Hydrolyzed whey protein, lactose-free, gluten-free, Kosher, Halal, Nutraflora® scFOS® prebiotic fiber, nutritionally complete, and 60% MCT oil	Yes	Malabsorption/ K90.4 GI Impairment/ K92.9 FPIES/ K52.21 Short bowel syndrome/ K91.2 Eosinophilic esophagitis/ K20.0 Multiple food protein intolerance/ K52.21 Oral or tube feeding supplement
		PediaSure Peptide 1.5	Abbott	RTF	8 oz.	Vanilla	Hydrolyzed whey protein, lactose-free, gluten-free, Kosher, Halal, Nutraflora® scFOS® prebiotic fiber, nutritionally complete, and 60% MCT oil	Yes	Malabsorption/ K90.4 GI Impairment/ K92.9 FPIES/ K52.21 Short bowel syndrome/ K91.2 Eosinophilic esophagitis/ K20.0 Multiple food protein intolerance/ K52.21 Oral or tube feeding supplement

Tier	Product Category	WIC Approved Milk or Specialty Formula	Manufacturer/Distributor	Form	Size	Flavor	Composition	Medical Documentation Required	Indication/ICD-10
Tier 4 (Continued)	Amino Acid/ Elemental (Continued)	Peptamen Jr	Nestlé	RTF	250 ml	Strawberry Vanilla Unflavored	Enzymatically hydrolyzed 100% whey protein, Lactose-free, elemental, nutritionally complete, 60% of fat is MCT oil	Yes	Malabsorption/ K90.4 GI Impairment/ K92.9 FPIES/ K52.21 Short bowel syndrome/ K91.2 Eosinophilic esophagitis/ K20.0 Severe allergy to cow's milk/ Z91.011 Multiple food protein intolerance/ K52.21 Crohn's disease/ K50.00 Oral or tube feeding supplement
		Peptamen Jr with fiber	Nestlé	RTF	250 ml	Vanilla	Enzymatically hydrolyzed 100% whey protein, Lactose-free, elemental, nutritionally complete, 60% of fat is MCT oil PREBIO1™ soluble fiber	Yes	Malabsorption/ K90.4 GI Impairment/ K92.9 FPIES/ K52.21 Short bowel syndrome/ K91.2 Eosinophilic esophagitis/ K20.0 Severe allergy to cow's milk/ Z91.011 Multiple food protein intolerance/ K52.21 Crohn's disease/ K50.00 Oral or tube feeding supplement
		Peptamen Jr with PREBIO1™	Nestlé	RTF	250 ml	Vanilla Chocolate	Enzymatically hydrolyzed 100% whey protein, Lactose-free, elemental, nutritionally complete, 60% of fat is MCT oil PREBIO1™ soluble fiber	Yes	Malabsorption/ K90.4 GI Impairment/ K92.9 FPIES/ K52.21 Short bowel syndrome/ K91.2 Eosinophilic esophagitis/ K20.0 Severe allergy to cow's milk/ Z91.011 Multiple food protein intolerance/ K52.21 Crohn's disease/ K50.00 Oral or tube feeding supplement
		Peptamen Jr 1.5	Nestlé	RTF	250 ml	Unflavored	Enzymatically hydrolyzed 100% whey protein, Lactose-free, elemental, nutritionally complete, 60% of fat is MCT oil PREBIO1™ soluble fiber	Yes	Malabsorption/ K90.4 GI Impairment/ K92.9 FPIES/ K52.21 Short bowel syndrome/ K91.2 Eosinophilic esophagitis/ K20.0 Severe allergy to cow's milk/ Z91.011 Multiple food protein intolerance/ K52.21 Crohn's disease/ K50.00 Oral or tube feeding supplement

Tier	Product Category	WIC Approved Milk or Specialty Formula	Manufacturer/Distributor	Form	Size	Flavor	Composition	Medical Documentation Required	Indication/ICD-10
Tier 4 (Continued)	Amino Acid/ Elemental (Continued)	PurAmino Toddler	Mead Johnson	Powder	14.1 oz	Unflavored	Hypoallergenic, 100% free amino acids, MCT oil, and contains DHA	Yes	Malabsorption/ K90.4 GI Impairment/ K92.9 FPIES/ K52.21 Short bowel syndrome/ K91.2 Eosinophilic esophagitis/K20.0 Severe cow's milk allergy/ Z91.011 Multiple food protein intolerance/ K52.21 Oral or tube feeding supplement
		Tolerex	Nestlé	Powder	2.82 oz. (6 packet/ Carton)	Unflavored	Lactose-free, gluten-free, elemental with 100% free amino acids, 2% calories from fat, and nutritionally complete	Yes	Malabsorption/ K90.4 GI Impairment/ K92.9 Short bowel syndrome/ K91.2 Oral or tube feeding supplement
		Vivonex Pediatric	Nestlé	Powder	1.7 oz. 6 packet/ cartons	Unflavored	Lactose-free, gluten-free, Kosher, nutritionally complete elemental, with 100% free amino acids, and contains 70% MCT oil	Yes	Malabsorption/ K90.4 GI Impairment/ K92.9 FPIES/ K52.21 Short bowel syndrome/ K91.2 Eosinophilic esophagitis/ K20.0 Severe allergy to cow's milk/ Z91.011 Multiple food protein intolerance/ K52.21 Crohn's disease/ K50.00 Oral or tube feeding supplement

For a comprehensive listing of all Georgia WIC Approved formulas, please visit wic.ga.gov. Formulas not currently on the Georgia WIC Approved Formulary may be considered for addition to the formulary by formal request from the medical provider or other applicable party.



American Academy of Pediatrics

DEDICATED TO THE HEALTH OF ALL CHILDREN™



Georgia Chapter