



Georgia MMP Provider Fact Sheet



What is the Medical Monitoring Project (MMP)?

- MMP is an ongoing population-based surveillance system that is designed to assess clinical outcomes and behaviors of HIV-infected adults receiving care in the U.S.
- It is currently conducted in 17 states and 6 cities by local and state public health departments in collaboration with the Centers for Disease Control and Prevention (CDC).
- Data is collected through patient interviews and medical chart abstractions.

What kind of data is collected and how might it be of interest to my practice?

- The following provide a few examples of the type of data collected from MMP patient interviews:

Patient Demographic Information, 2007[†]

Race/Ethnicity

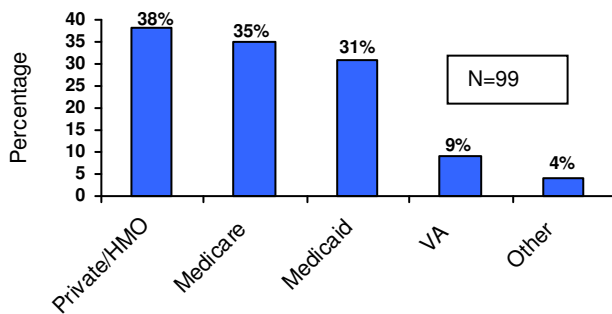
	Male (n [‡] =101) No. (%)	Female (n=52) No. (%)	Total (n=153) No (%)
White, Non-Hispanic	37 (37)	7 (13)	44 (29)
Black, Non-Hispanic	56 (55)	43 (83)	99 (65)
Hispanic, All Races	7 (7)	1 (2)	8 (5)
Other ¹	1 (1)	1 (2)	2 (1)

¹“Other” includes American Indian/Alaskan Native, Asian, Multiracial, and Native Hawaiian/Pacific Islander.

Age At The Time Of Interview

	Male (n=107) No. (%)	Female (n=54) No. (%)	Total (n=161) No. (%)
18-24	0 (0)	2 (4)	2 (1)
25-34	14 (13)	9 (17)	23 (14)
35-44	37 (35)	18 (33)	55 (34)
45-54	36 (34)	19 (35)	55 (34)
55+	20 (19)	6 (11)	26 (16)

Medical Coverage in the Last 12 Months*



*Among those who had medical coverage or health insurance in the past 12 months (n=99).

[†]Categories are not mutually exclusive. HMO = Health Maintenance Organization, VA = Veterans Administration

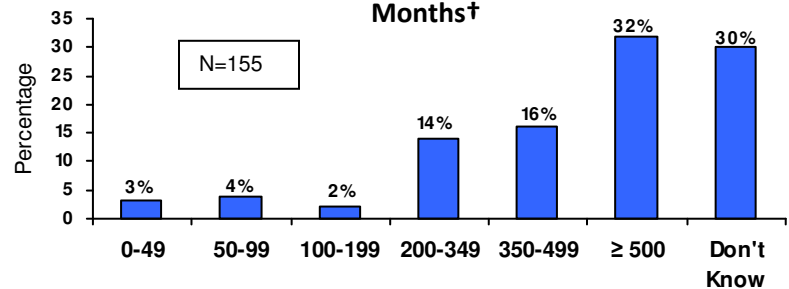
[‡] For the purposes of this Fact Sheet, n always refers to the number of participants who responded to a specific question

Clinical Outcomes, 2007

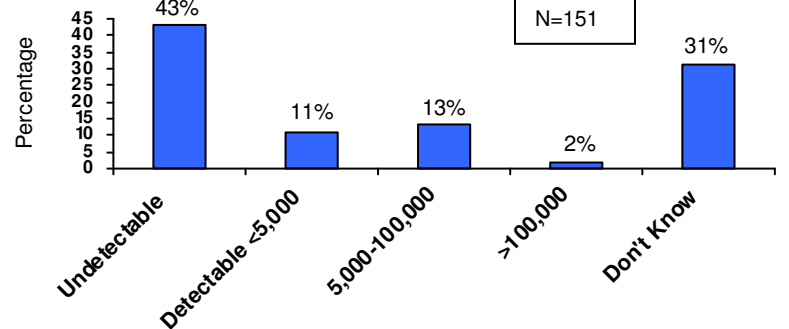
Median Number (And Range) Of Self-Reported CD4 And HIV Viral Load Tests In The Last 12 Months

	Male	Female	Total
CD4 Count	4.0 (0-12) n =94	4.0 (0-12) n =48	4.0 (0-12) n =142
HIV Viral Load	4.0 (2-12) n=87	4.0 (1-12) n=48	4.0 (1-12) n=135

Most Recent Self-Reported CD4 Count in the Last 12 Months[†]



Most Recent Self-Reported Viral Load Test in the Last 12 Months[†]



[†] Among those who ever had the respective test, excluding refused and skipped.

Time Between HIV Diagnosis And Entry Into HIV Care*

	Male (n=79) No. (%)	Female (n=40) No. (%)	Total (n=119)
Less Than Or Equal To 3 Months	64 (81)	35 (88)	99 (83)
Between 3 And 12 Months	6 (8)	4 (10)	10 (8)
Greater Than 12 Months	9 (11)	1 (2)	10 (8)

*HIV medical care is defined as self-reported visit to an HIV care provider.

Antiretroviral Therapy Use In The Last 12 Months

	Male (n=100) No. (%)	Female (n=50) No. (%)	Total (n=150) No. (%)
No	5 (5)	5 (10)	10 (7)
Yes	95 (95)	45 (90)	140 (93)

Sexual Behavior, 2007

Number Of Sexual Partners In The Last 12 Months*

	MSM (n=42) No. (%)	MSW (n=30) No. (%)	WSM (n=30) No. (%)
One	19 (45)	20 (67)	24 (80)
Two Or More	23 (55)	10 (33)	6 (20)

Reported Unprotected Vaginal Or Anal Sex With At Least 1 Partner In The Last 12 Months*

	MSM (n=33) No. (%)	MSW (n=26) No. (%)	WSM (n=30) No. (%)
No	17 (52)	21 (81)	21 (70)
Yes	16 (48)	5 (19)	9 (30)

*(MSM) Men who have sex with men
(MSW) Men who have sex with women
(WSM) Women who have sex with men
MSM and MSW are not mutually exclusive categories

Substance Use, 2007

Injection Drug Use In The Last 12 Months

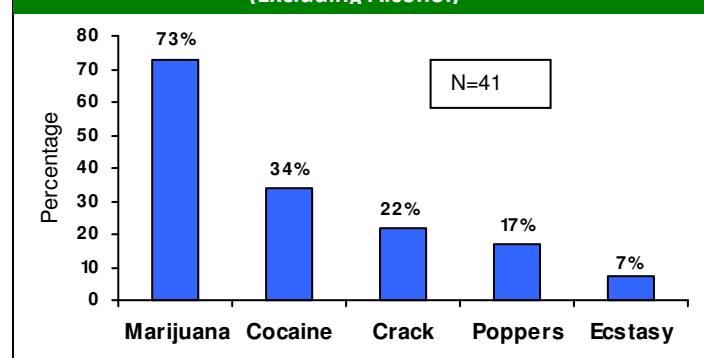
	Male (n=107) No. (%)	Female (n=54) No. (%)	Total (n=161) No. (%)
No	107 (100)	54 (100)	161 (100)
Yes	0 (0)	0 (0)	0 (0)

Non-Injection Drug Use In The Last 12 Months*

	Male (n=69) No. (%)	Female (n=23) No. (%)	Total (n=92) No. (%)
No	39 (57)	14 (61)	53 (58)
Yes	30 (43)	9 (39)	39 (42)

*Excluding alcohol

Top 5 Commonly Used Non-Injection Drugs (Excluding Alcohol)*



* Among those who reported non-injection drug use (n=41). Categories are not mutually exclusive.

Data Prepared By:
Eugene Pennisi, MA, MPH, GA MMP Data Manager
Georgia Department of Public Health
(404)657-4046
alpennisi@dhr.state.ga.us



Unmet Needs for Ancillary Services, 2007

Most Frequently Reported Unmet Needs In The Last 12 Months*

	Male No. (%)	Female No. (%)	Total No. (%)
Social Services	(n=18) 9 (50)	(n=11) 6 (55)	(n=29) 15 (52)
Finding Dental Services	(n=41) 10 (24)	(n=15) 4 (27)	(n=56) 14 (25)
Help Finding Shelter/Housing	(n=4) 2 (50)	(n=10) 7 (70)	(n=14) 9 (64)
Childcare Services	(n=1) 1 (100)	(n=5) 4 (80)	(n=6) 5 (83)
Transportation Assistance	(n=14) 1 (7)	(n=18) 3 (17)	(n=32) 4 (13)
Help Finding Meals/Food	(n=13) 1 (8)	(n=12) 3 (25)	(n=25) 4 (16)
Case Management Services	(n=32) 2 (6)	(n=26) 2 (8)	(n=58) 4 (7)

*Defined as a need that the participant experienced during the past 12 months but was unable to obtain during that period. Denominator=the number of participants who needed the specific service (n). Categories are not mutually exclusive.

Why should I participate in MMP?

- The information collected through MMP may be used by HIV prevention planning groups, clinicians, Ryan White consortia, and policy leaders to help plan services and advocate for additional resources.
- MMP presents a unique opportunity to contribute to knowledge about HIV care in the U.S.
- MMP's true success depends upon the participation of HIV care providers like you.

Limitations

- In 2007, response rates were lower than anticipated. Consequently, the data presented here are neither representative nor generalizable.

Questions about MMP?

- If you are interested in learning more about MMP or have any questions, please contact:

Jianglan White, MD, MPH, GA MMP Principal Investigator
(404) 657-2601
jzwhite@dhr.state.ga.us

Sarah Loch, MPH, GA MMP Project Coordinator
(404) 657-2612
seloch@dhr.state.ga.us

Barbara Blake, RN, PhD, ACRN, GA MMP PAB Member
(770) 423-6385
bblake@kennesaw.edu

Jacqueline Muther, GA MMP CAB Member
(404) 616-6230
jmuther@gmh.edu