



Georgia Weekly Influenza Report

Updated 12/14/2018

Week 49 (December 2 — December 8, 2018)

Snapshot of Influenza Activity During Week 49:

- **Outpatient Illness Surveillance (ILINet):** The proportion of outpatient visits for ILI was **4.0%**, which is **ABOVE** the regional baseline of 2.2%
- **Activity Indicator Map:** HIGH
- **Geographic Spread of Influenza:** WIDESPREAD
- **Influenza-associated Deaths:** 2 deaths were confirmed
- **Metro Area Hospitalizations:** 34 hospitalizations were reported
- **Influenza Outbreaks:** 0 outbreaks were reported
- **Viral Surveillance:** The percent of specimens testing positive for influenza by clinical laboratories was 7%
- **RSV Season Status:** **ON**

Summary of Select Influenza Surveillance Measures

	Week 49	Cumulative Data since September 30, 2018 (Week 40)
No. of Influenza-associated Deaths	2	4
No. of Metro Area Influenza Hospitalizations	34	159
No. of Influenza Outbreaks	0	2

Contact: Audrey.Kunkes@dph.ga.gov or (404) 463-4625

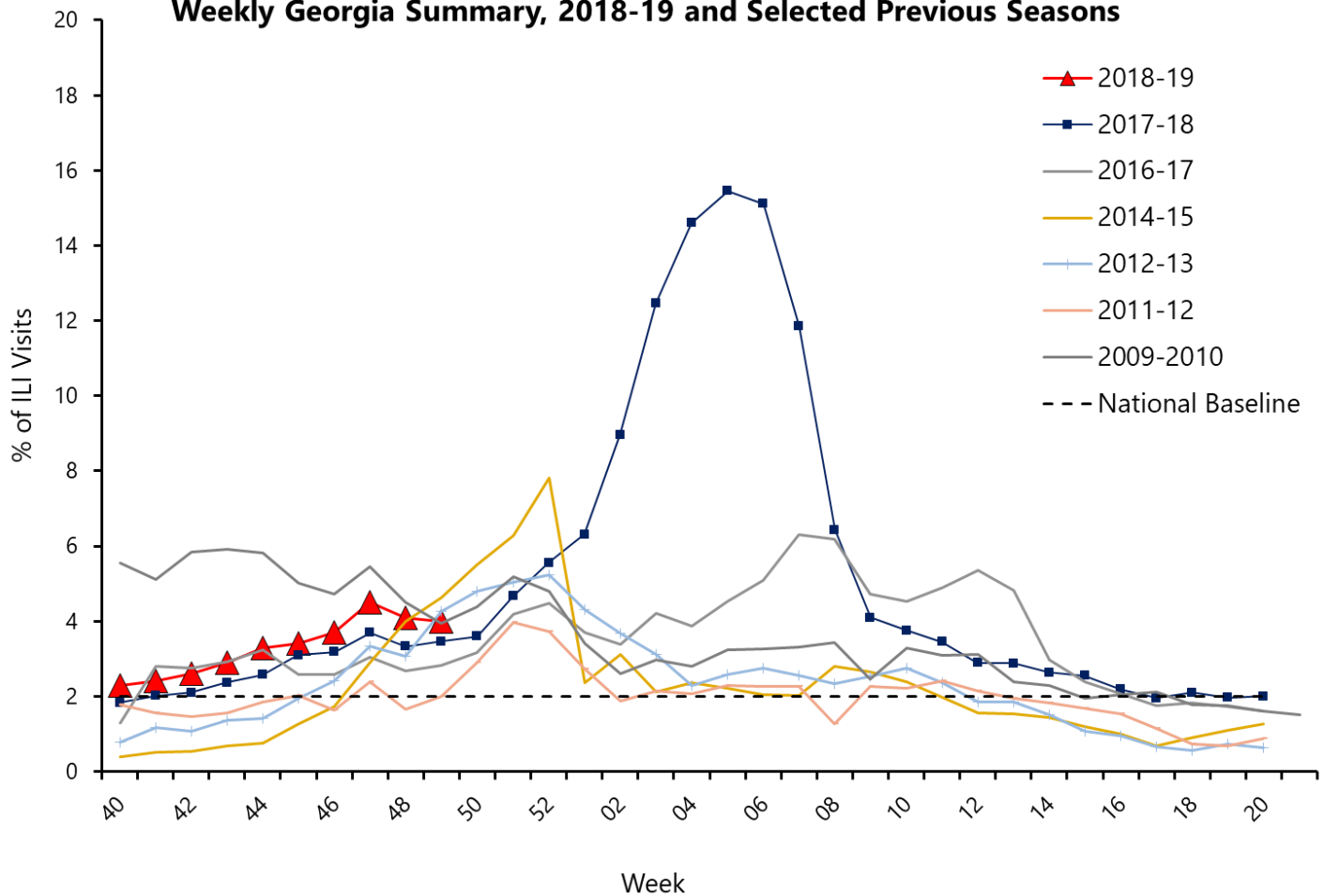
Outpatient Illness Surveillance

In Georgia during week 49, 4.0% of patient visits reported through the U.S. Outpatient Influenza-like Illness Surveillance Network (ILINet) were due to influenza-like illness (ILI). The percentage is above the regional baseline of 2.2%. (ILI is defined as fever (temperature of 100°F [37.8°C] or greater) and cough and/or sore throat.)

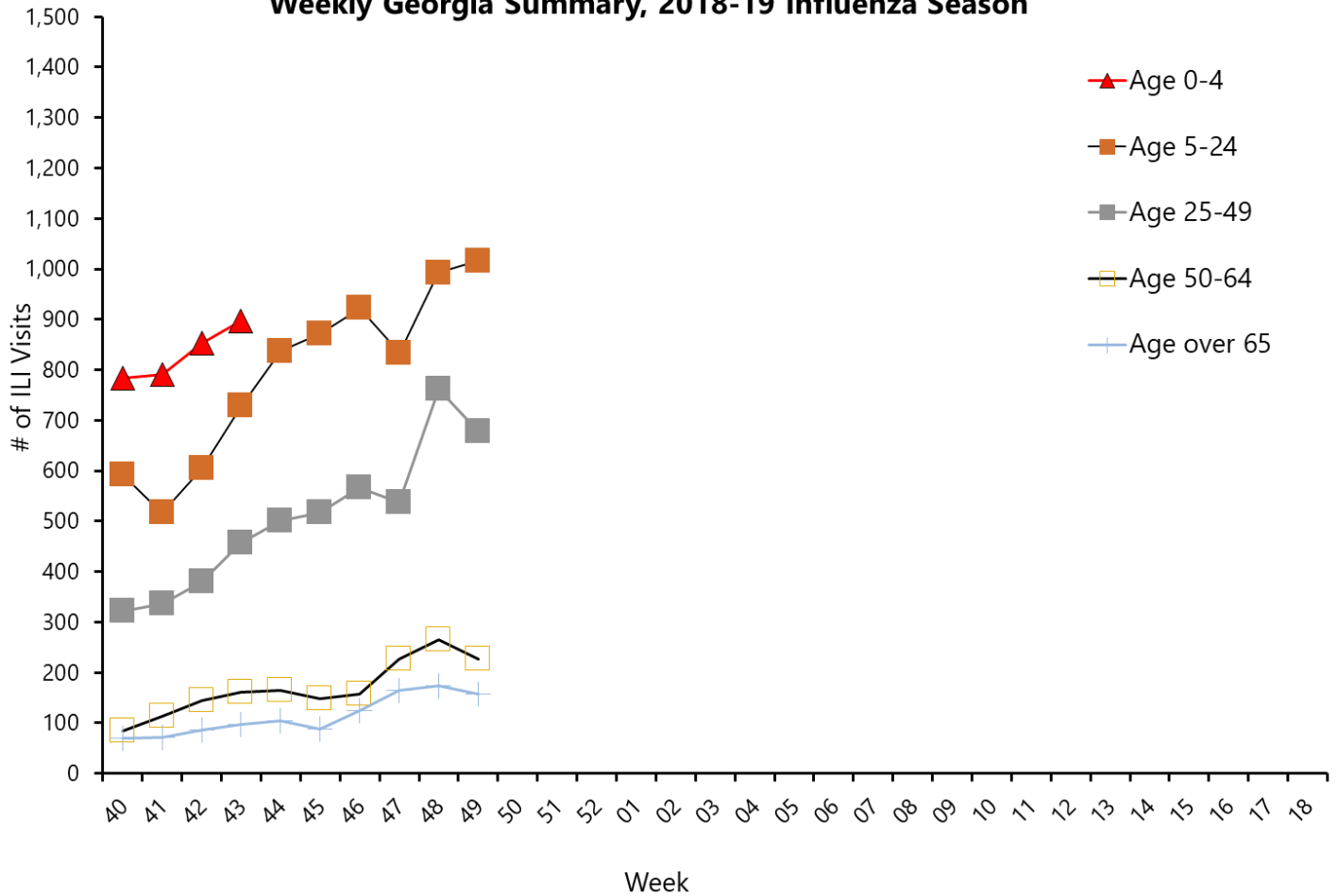
A total of 97 sentinel providers reported data for week 49.

Note: The regional baseline is formulated by averaging ILI percentage during weeks of endemic activity determined by laboratory results for influenza. HHS Region 4 (AL, FL, GA, KY, MS, NC, SC, and TN) (Baseline: 2.2%).

Percentage of Visits for Influenza-like Illness (ILI) Reported by the Outpatient Influenza-like Illness Surveillance Network (ILINet), Weekly Georgia Summary, 2018-19 and Selected Previous Seasons



Number of Visits for Influenza-like Illness (ILI), by Age, Reported by the Outpatient Influenza-like Illness Surveillance Network (ILINet), Weekly Georgia Summary, 2018-19 Influenza Season



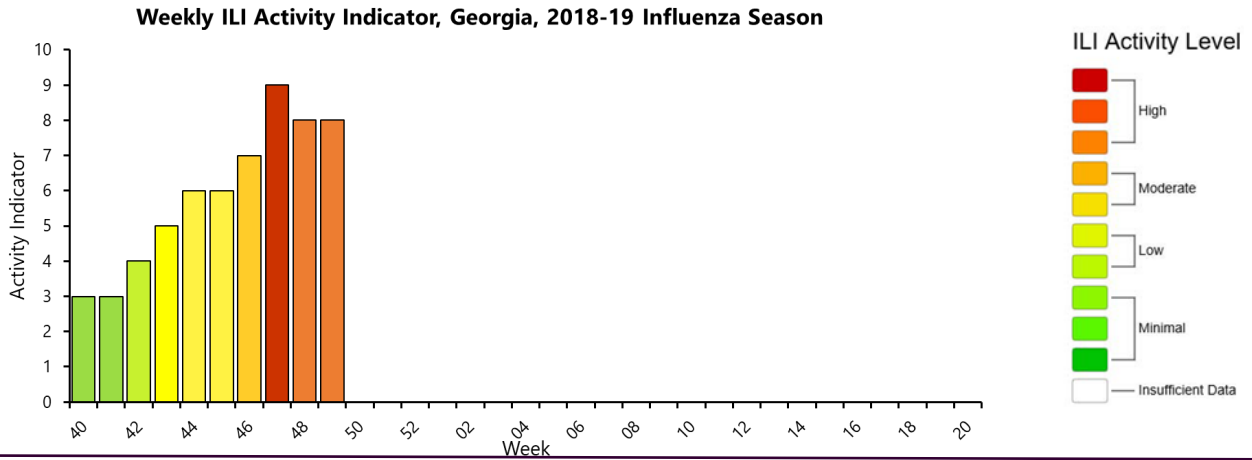
Summary of ILI, by Age, Reported to ILINet, Weekly Georgia, 2018-19 Influenza Season

Age Group in Years	No. of ILI Visits (Week 49)	Cumulative Data since September 30, 2018 (Week 40)
0-4	1,104	10,317
5-17	1,016	7,935
18-49	677	5,057
50-64	227	1,690
65+	158	1,135
Total	3,182	26,134

ILI Activity Indicator

ILI Activity Levels measure ILI activity each week. Activity levels are based on the percent of outpatient visits in Georgia due to ILI compared to the 3 year average of ILI visits during weeks with little or no influenza virus circulation.

During week 49, the activity level in Georgia was **HIGH = 8**

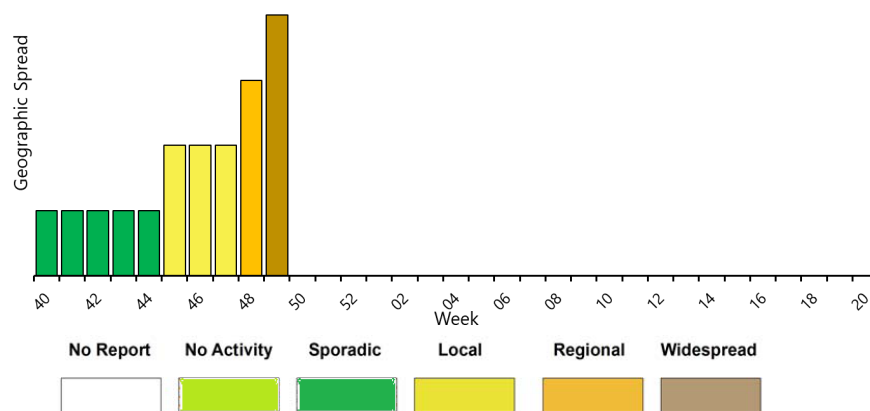


Geographic Spread of Influenza

Geographic spread is measured weekly and reflects geographic dispersion of influenza and is not an indicator of influenza severity.

During week 49, the geographic spread of influenza in Georgia was **WIDESPREAD**

Weekly Influenza Activity Estimates of Geographic Spread, Georgia, 2018-19 Influenza Season



- No Activity:** No laboratory-confirmed cases of influenza and no reported increase in the number of cases of ILI.
- Sporadic:** Small numbers of laboratory-confirmed influenza cases or a single laboratory-confirmed influenza outbreak has been reported, but there is no increase in cases of ILI.
- Local:** Outbreaks of influenza or increases in ILI cases and recent laboratory-confirmed influenza in a single region of the state.
- Regional:** Outbreaks of influenza or increases in ILI and recent laboratory confirmed influenza in at least two but less than half the regions of the state with recent laboratory evidence of influenza in those regions.
- Widespread:** Outbreaks of influenza or increases in ILI cases and recent laboratory-confirmed influenza in at least half the regions of the state with recent laboratory evidence of influenza in the state.

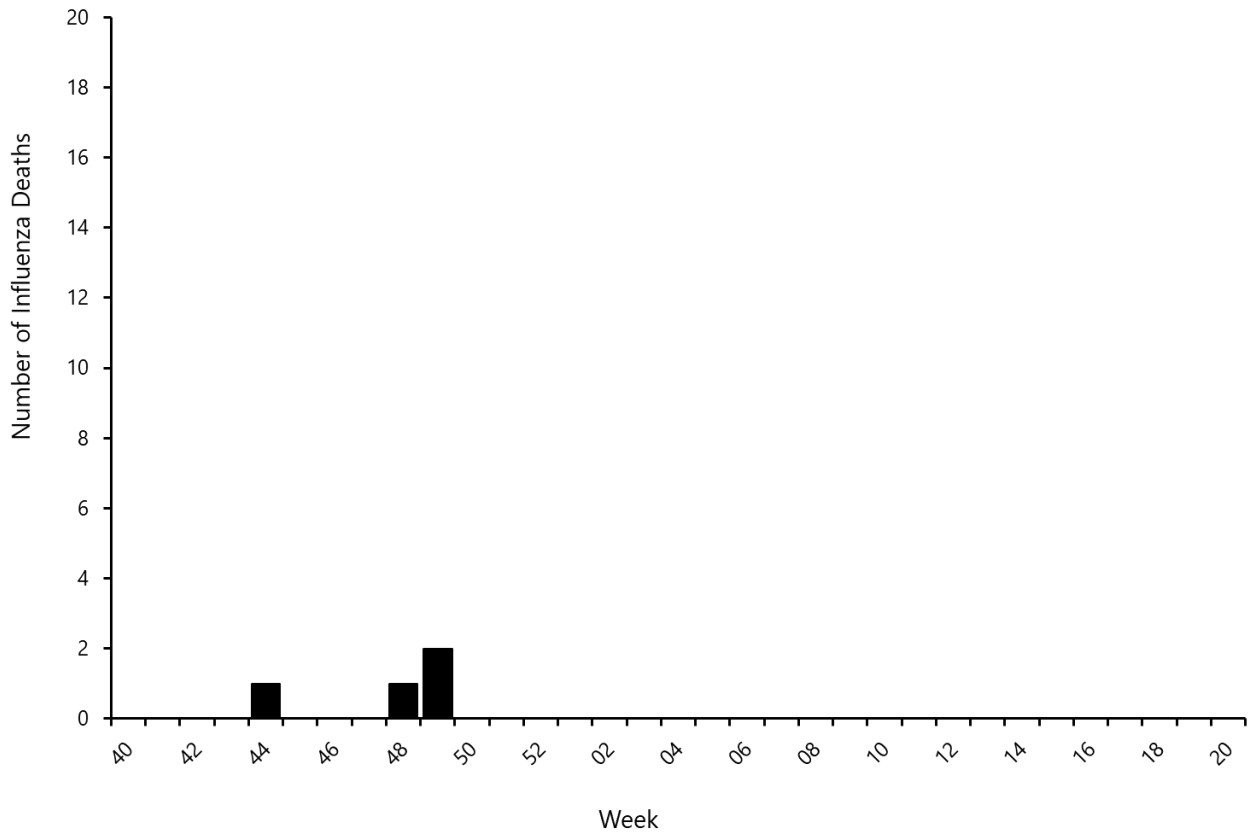
Influenza-Associated Mortality

Influenza-associated deaths (in all ages) are reportable by law in the state of Georgia. To be confirmed as a as influenza-associated death, the person must have a clinically compatible illness, a positive influenza test, no documented recovery between the illness and death.

There were 2 influenza-associated death reported in Georgia during week 49.

A total of 4 influenza-associated deaths have been confirmed for the 2018-2019 season.

**Number of Laboratory Confirmed Influenza Deaths by Week of Death: Georgia
Summary, 2018-19 Influenza Season**



Summary of Influenza-associated Deaths, by Age, Georgia, 2018-19 Influenza Season

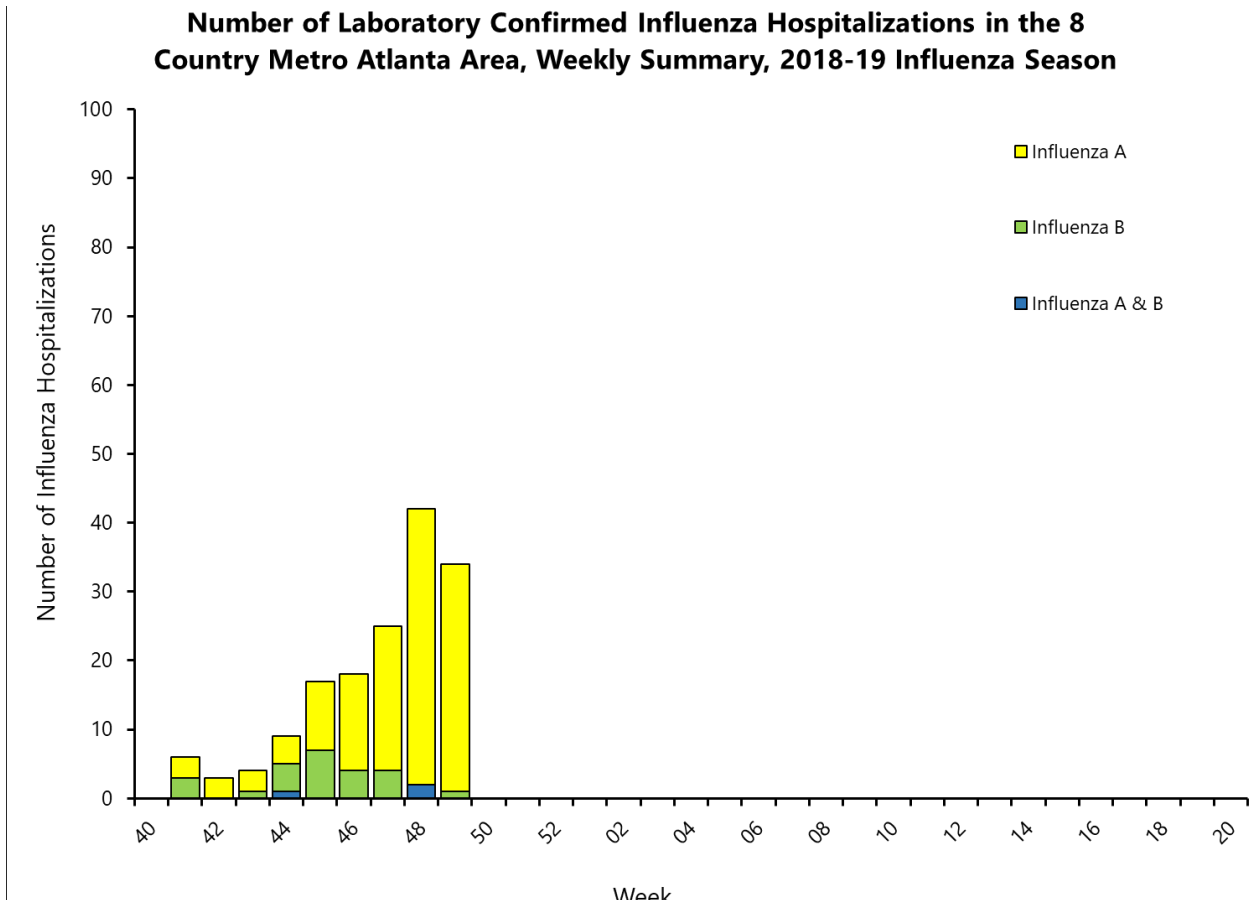
Age Group in Years	No. of Flu Deaths (Data Cumulative since Week 40)
0-4	0
5-17	1
18-49	0
50-64	0
65+	3
Total	4

Influenza-Associated Hospitalizations

The Influenza Hospitalization Surveillance Network (FluSurv-Net) reports laboratory confirmed influenza hospitalizations in the eight county metro Atlanta area (Fulton, DeKalb, Clayton, Cobb, Douglas, Gwinnett, Rockdale, and Newton) for the 2018-2019 influenza season.

There were 34 laboratory confirmed influenza hospitalizations confirmed for week 49.

A total of 159 laboratory confirmed influenza hospitalizations have been reported for the 2018-2019 season.



Summary of Influenza Hospitalizations, by Age, Georgia, 2018-19 Influenza Season

Age Group in Years	No. of Flu Hospitalization (Cumulative Data since Week 40)	Hospitalization Rate (per 100,000 population)
0-4	25	9.34
5-17	30	4.05
18-49	32	1.70
50-64	31	4.11
65+	41	9.02
Total	159	3.88

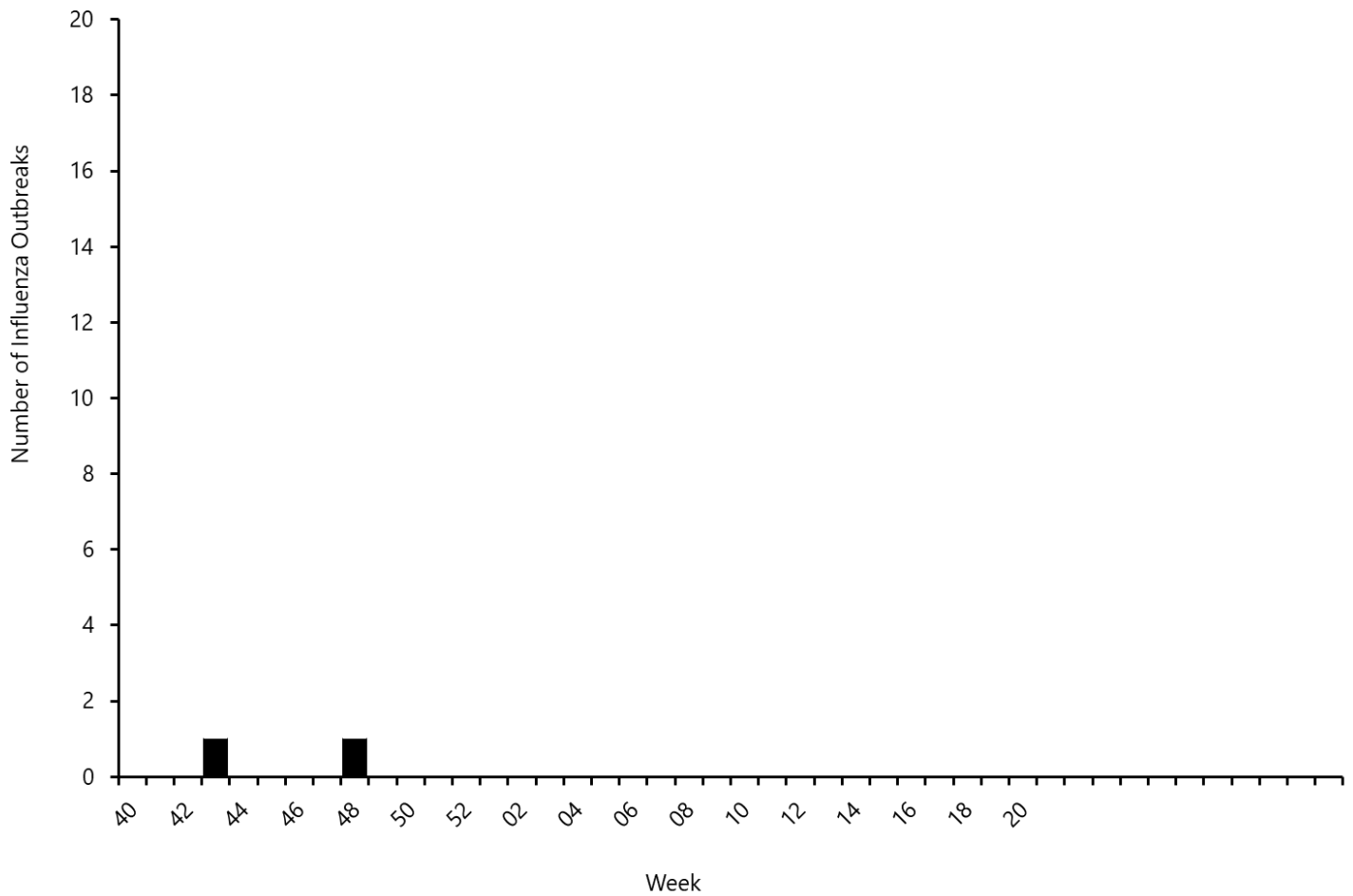
Influenza Outbreaks

Influenza outbreaks are reportable by law in the state of Georgia.

0 influenza outbreaks were reported for week 49.

A total of 2 laboratory confirmed influenza outbreaks have been reported in Georgia for the 2018-2019 season.

**Number of Laboratory Confirmed Influenza Outbreaks by Onset Week
Weekly Georgia, Summary, 2018-19 Influenza Season**

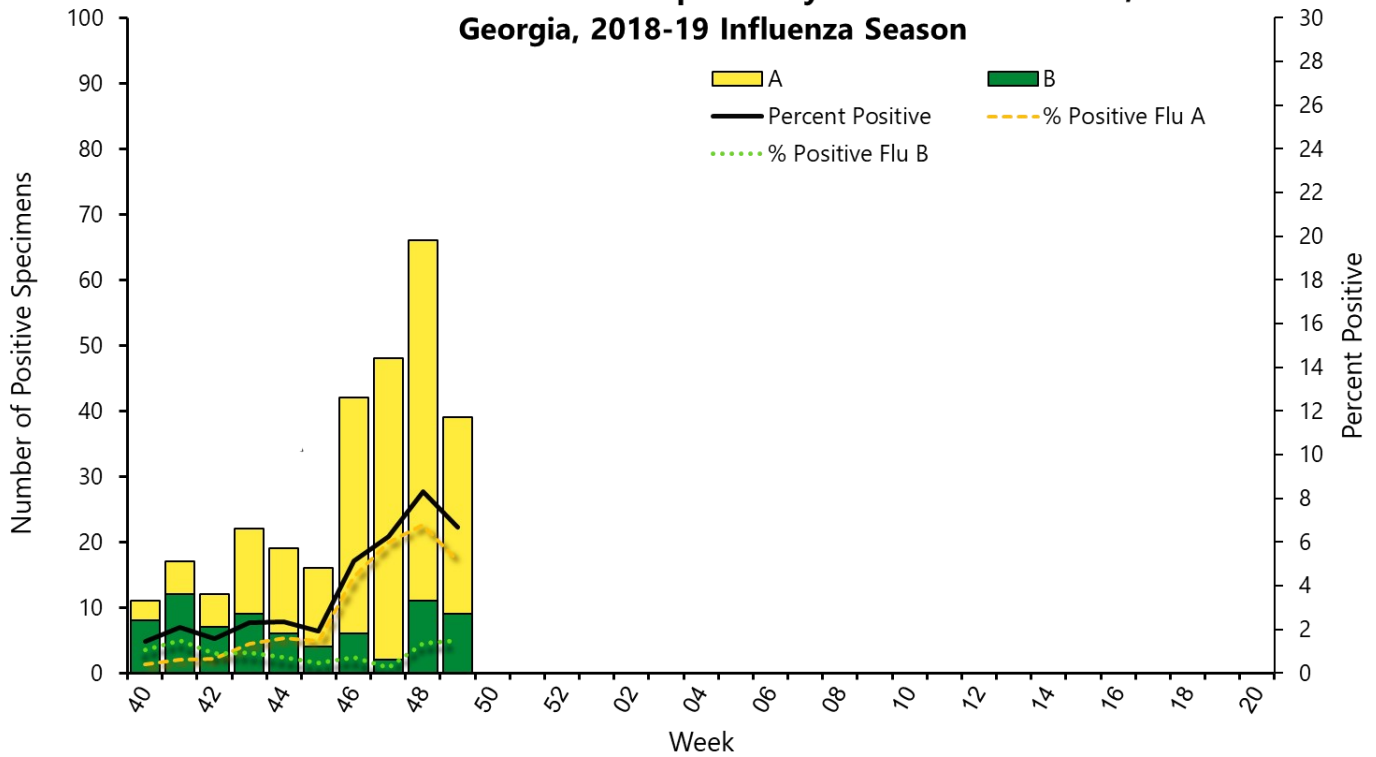


Virologic Surveillance

The National Respiratory and Enteric Virus Surveillance System (NREVSS) and World Health Organization (WHO) collaborating laboratories (a combination of clinical and public health laboratories) report the total number of respiratory specimens tested for influenza and the number of positive for influenza, by virus type. Public Health Laboratories provide data about influenza virus subtypes and lineages (next page).

During week 49, clinical laboratories in Georgia reported testing 584 specimens, of which 7% were positive for influenza.

Influenza Positive Tests Reported by Clinical Laboratories, Georgia, 2018-19 Influenza Season

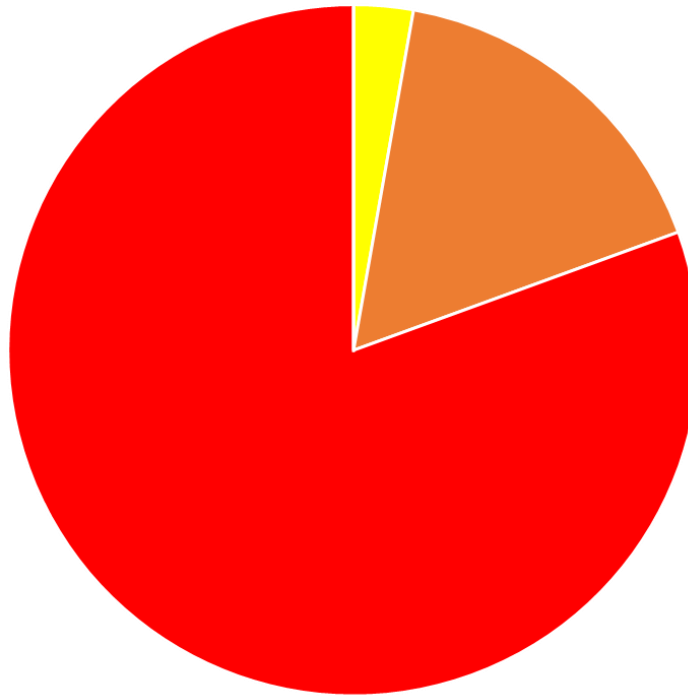


Summary of Influenza Tests from Clinical Laboratories, Georgia, 2018-19 Influenza Season

	Week 49	Cumulative Data Since Week 40
No. of specimens tested	584	7,907
No. of positive specimens	39	292
<i>Influenza A</i>	30	218
<i>Influenza B</i>	9	74

Georgia Public Health Laboratories tested 222 specimens for influenza between September 30, 2018 and December 14, 2018. Among all specimens tested 36 have been positive for influenza.

Influenza Positive Tests Reported by Public Health Laboratories, Georgia, September 30, 2018 – December 14, 2018



■ A (subtyping not performed)
 ■ 2009 H1N1
 ■ A (H3N2)
 ■ B (lineage not performed)

Summary of Influenza Tests from Public Health Laboratories, Georgia, 2018-19 Influenza Season

	Cumulative Data Since Week 40
No. of specimens tested	222
No. of Positive Specimens	36
<i>Influenza A (subtype not performed)</i>	1
<i>A(H1N1)pmd09</i>	6
<i>H3</i>	29
<i>Influenza B (lineage not performed)</i>	0
<i>Yamagata lineage</i>	0
<i>Victoria lineage</i>	0

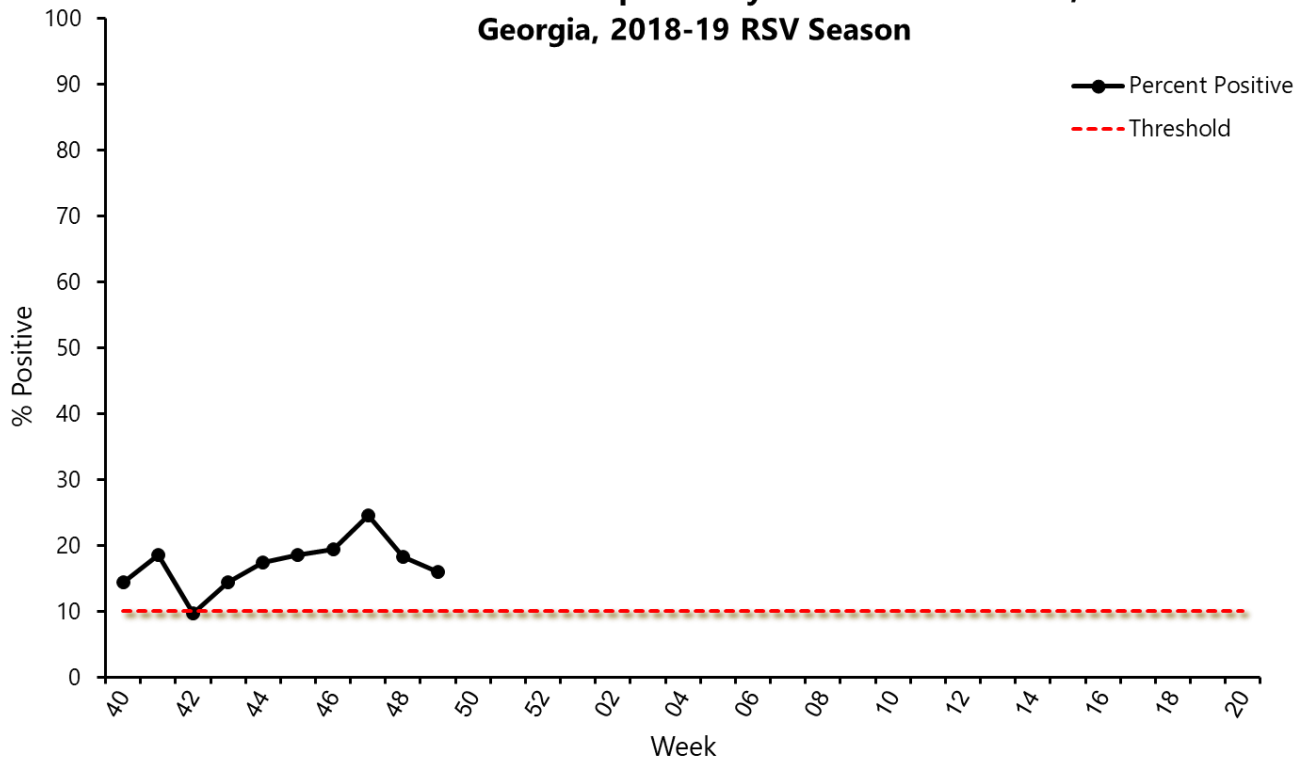
Respiratory Syncytial Virus Infection (RSV) Surveillance

Data from NREVSS are also analyzed to measure the RSV seasonality. RSV season onset is defined as the first week of two (2) consecutive weeks when the percent positive of ALL laboratory confirmed tests are greater than or equal to 10%. The end of RSV season is now defined as the first week of two consecutive weeks when the percent positive of ALL laboratory confirmed tests are less than 10%.

RSV Season Status: **ON**

During week 49, clinical laboratories in Georgia reported testing 245 specimens, of which 18% were positive for RSV.

**RSV Positive Tests Reported by Clinical Laboratories,
Georgia, 2018-19 RSV Season**



**Summary of RSV Tests from Clinical Laboratories, Georgia,
2018-19 RSV Season**

	Week 49	Data Cumulative Since Week 40
No. of specimens tested	245	2,183
No. of positive specimens	40	388