

# Georgia Weekly Influenza Report

MMWR Week 40

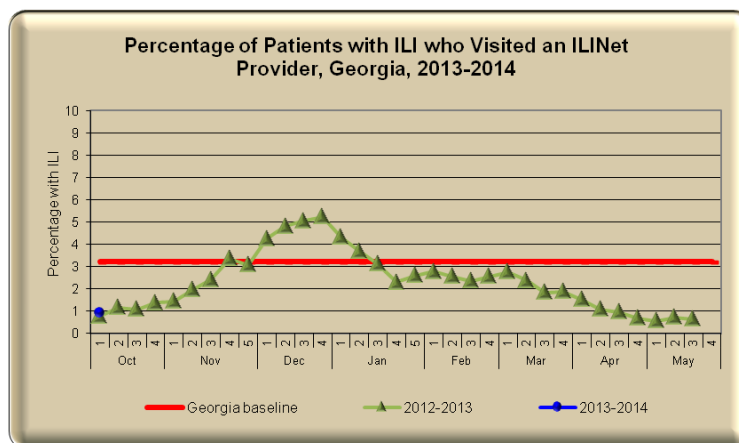
Updated 10/11/2013

## Week 40 ( Sept. 29 - Oct. 5, 2013) Synopsis

During week 40 there was sporadic influenza activity in Georgia with minimal occurrences of sustained flu transmission.

- **Outpatient Illness Surveillance (ILINet):** The proportion of outpatient visits for ILI was **0.92%**, which is below the Georgia baseline of 3.2%.
- **Geographic Spread of Influenza:** The geographic spread of influenza in Georgia was **MINIMAL** during week 40.
- **Metro Area Hospitalizations:** There were **0** hospitalizations due to influenza infection.
- **Influenza Related Deaths:** There were **0** confirmed deaths due to influenza during week 40.
- **Viral Surveillance:** Of the **321** Specimens tested and reported by the Georgia Public Health Laboratory (GPHL) and the National Respiratory and Enteric Virus Surveillance System (NREVSS) collaborating laboratories during week 40, **12 (3.7%)** were positive for influenza.
- **Reported Influenza Outbreaks:** There were **0** influenza-related outbreaks reported to public health during week 40 .
- **RSV Viral Surveillance:** Of the **93** specimens tested and reported by the Georgia Public Health Laboratory (GPHL) and the National Respiratory and Enteric Virus Surveillance System (NREVSS) collaborating laboratories during week 40, the **average** percent positive of **ALL** laboratory confirmed tests was **23.4%**.

## ILINet Provider Network Data



This Week: **0.92%** of patients seen in ILINet Provider offices were diagnosed with ILI.

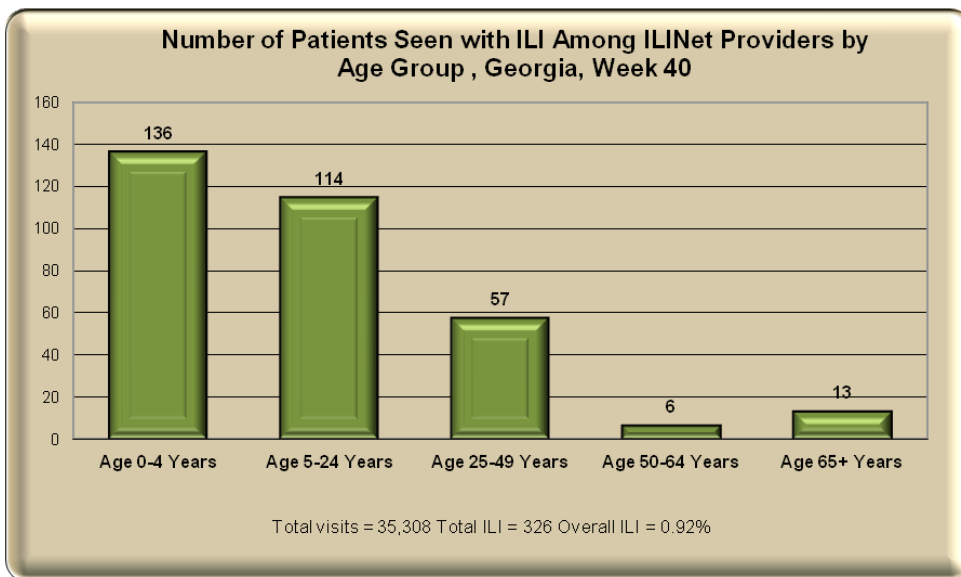
Note: The Georgia baseline is formulated by averaging ILI percentage during weeks of endemic activity determined by laboratory results for influenza.

**Percentage of patients with ILI reported by ILINet providers** (Volunteer providers who report percentage of patients with ILI seen by their practice or facility weekly. This week there are currently **32** ILINet providers reporting in Georgia.)

**GEORGIA  
DEPARTMENT OF  
PUBLIC HEALTH**

**ILINet patient visits by  
age group**

This graph displays the number of patients seen at sentinel provider offices and diagnosed with ILI in the past week. The data are stratified by age-group.



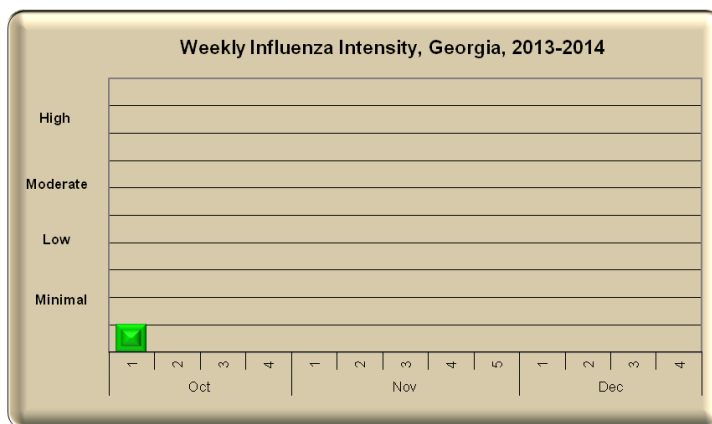
During **week 40** those in the age group 0-4 years were most often seen with ILI symptoms by ILINet providers.

**ILI Activity Level Indicator - ILINet**

(This graph uses the proportion of outpatient visits for ILI to measure the ILI severity in Georgia.) For a national view, visit <http://cdc.gov/flu/weekly/>

ILI Activity Levels (1 - 10) correspond to the number of standard deviations away from the 3-year mean for the current week.

This week the intensity level is:  
**Minimal = 1**



**Council of State and Territorial Epidemiologists Report – Geographic Dispersion**

(This graph reflects geographic dispersion and is not an indicator of influenza severity)

This Week's Flu Code is:

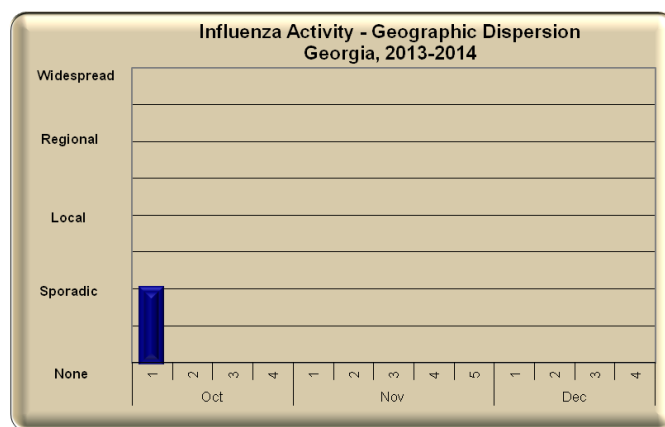
**SPORADIC**

Sporadic = ILI activity has not increased and isolated lab-confirmed cases of influenza

OR

ILI activity has not increased and a lab confirmed influenza outbreak in one institution.

**Georgia ILI Geographic Dispersion**

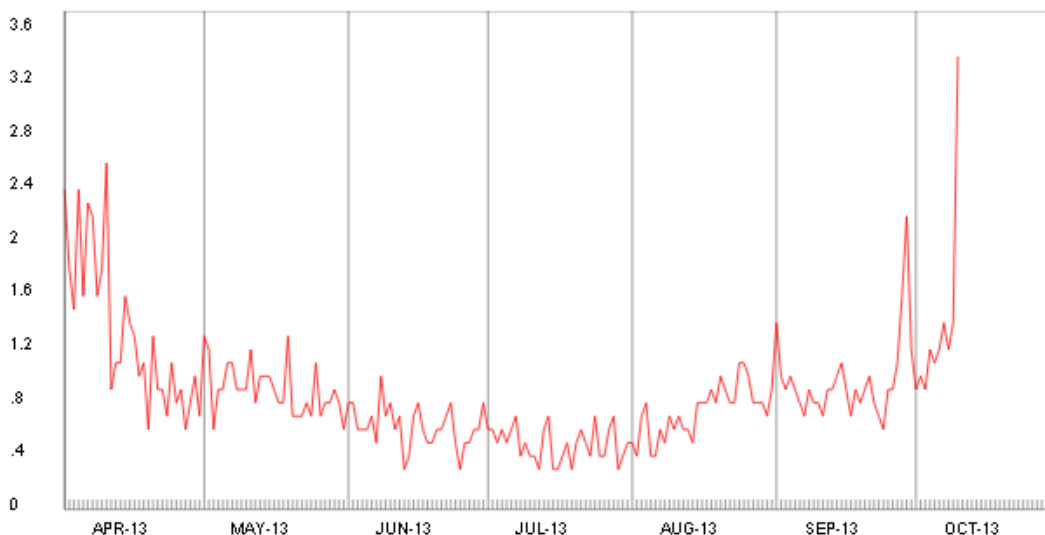


GEORGIA  
DEPARTMENT OF  
PUBLIC HEALTH

Syndromic Surveillance  
Data Daily Influenza-like  
Illness Syndrome  
(percentage of ILI visits)

### Daily Percent of ILI Syndrome Visits to Georgia Emergency

(Measured by ILI syndrome/ Total visits from Georgia Syndromic Surveillance Program emergency department chief complaint data)

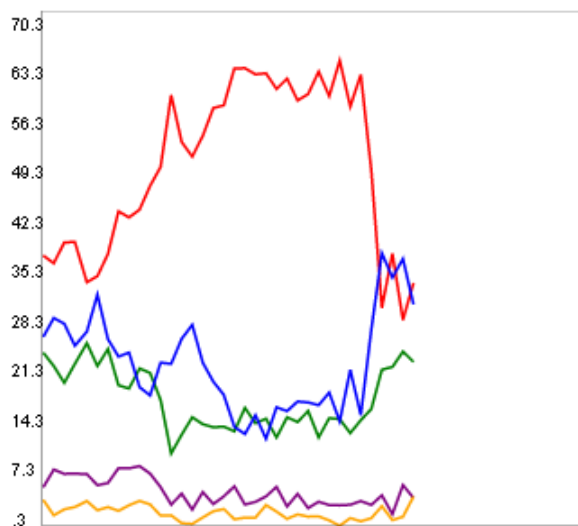


■ ILI Visits/Total Visits

During **week 40** the daily percentage of patients seen for ILI in Georgia Emergency Departments reporting to our syndromic surveillance system increased.

Syndromic Surveillance  
Data Weekly Influenza-like  
Illness Syndrome  
(percentage of ILI visits by  
Age Group)

### Weekly Percent of ILI Syndrome Visits by Age Group



■ Age Group 0-4  
■ Age Group 5-24  
■ Age Group 25-49  
■ Age Group 50-64  
■ Age Group 65+

**GEORGIA  
DEPARTMENT OF  
PUBLIC HEALTH**

**Influenza Hospitalizations in the eight county metro Atlanta area 2013-2014** (Emerging Infections Program data)

**Influenza-Associated Deaths 2013-2014 State-wide** (Influenza-associated deaths are a notifiable condition in Georgia)

**Influenza-Associated hospitalizations in the eight-county metro Atlanta area** (Emerging Infections Program data)

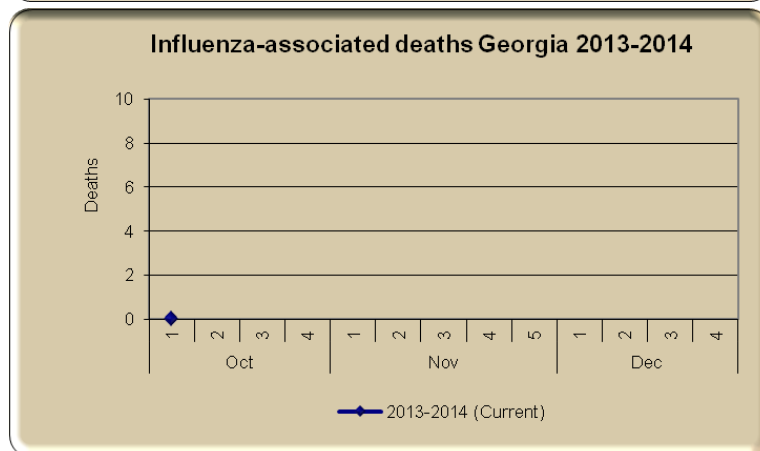
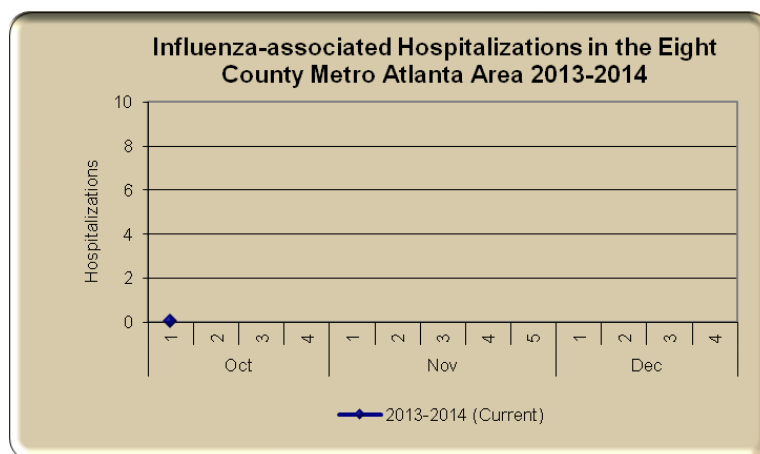
**Influenza-Associated deaths reported to Public Health**

## Georgia Influenza-Associated Hospitalizations and Deaths

Age Group	Number of Hospitalizations (8- County Metro-Area Only)
0 - 4	0
5 -17	0
18 - 51	0
51 - 64	0
65+	0
Total	0 (For confirmation, these data are delayed.)

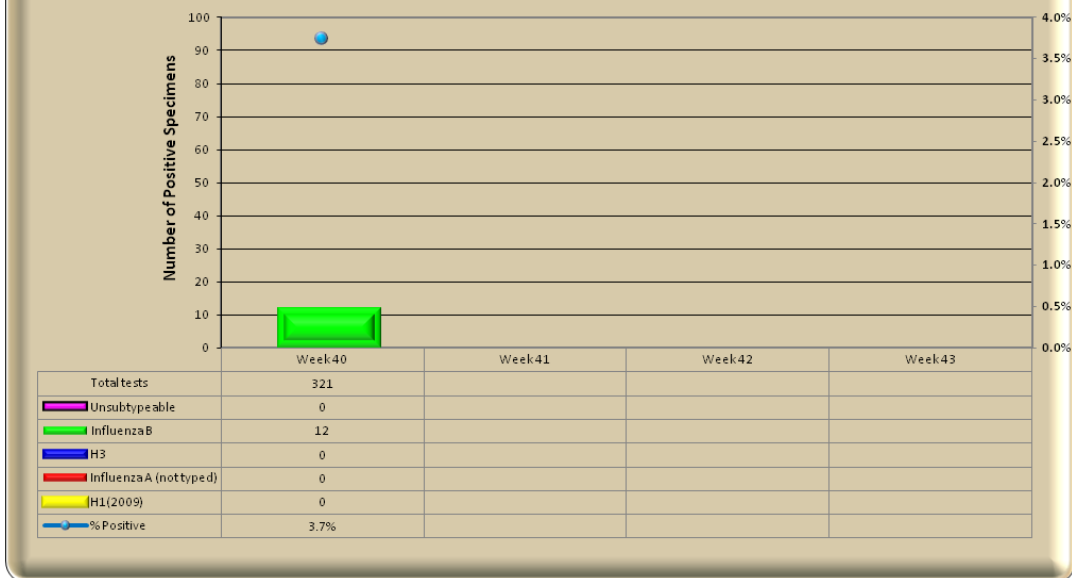
  

Age Group	Number of Deaths
0 - 4	0
5 -17	0
18 - 51	0
51 - 64	0
65+	0
Total	0 (For confirmation, these data are delayed.)



### Georgia Virologic Surveillance Data

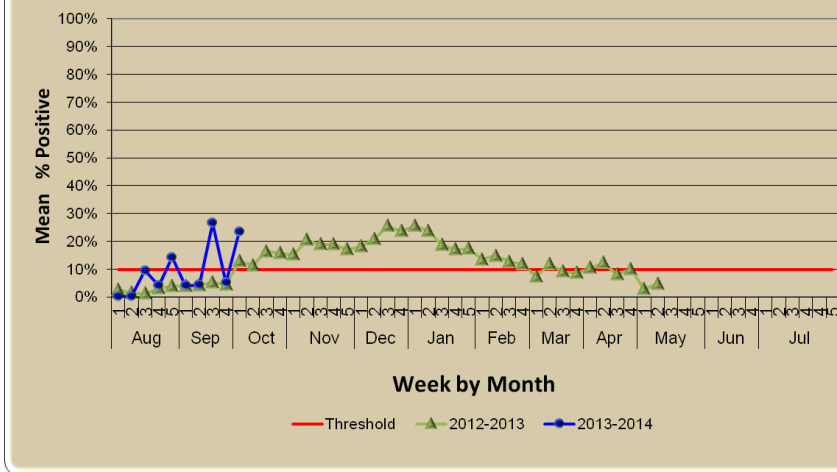
Influenza Positive Tests Reported to Public Health by U.S. WHO/NREVSS Collaborating Laboratories, Georgia, 2013-2014



**Note:** Includes rapid tests reported from reference Laboratories and the Georgia Public Health Laboratory; not all positive laboratory results for influenza are reported to Public Health.

### Respiratory Syncytial Virus (RSV) Surveillance Data

Mean Percent Positive RSV of ALL Laboratories Reporting by Week



**GEORGIA  
DEPARTMENT OF  
PUBLIC HEALTH**

2 Peachtree St. N.W.  
Atlanta, GA 30303

Phone: 404-463-4625  
Fax: 404-657-7517

E-mail: [aumartyn@dhr.state.ga.us](mailto:aumartyn@dhr.state.ga.us)

**GA DPH on the web !**  
<http://dph.georgia.gov/>

#### Georgia threshold of RSV season onset and end

RSV season onset is defined as the first week of two (2) consecutive weeks when the **average** percent positive of **ALL** lab confirmed tests are greater than or equal to 10%. The end of RSV season is now defined as the first week of two consecutive weeks when the **average** percent positive of **ALL** lab confirmed tests are less than 10%.

**RSV Season  
Status: OFF**



#### Flu News

[Find influenza vaccine providers in your area](#)

[FLU NEWS SCAN: H7N9 transmission estimates; h7N9 treatment, prophylaxis guidance](#)