

# Georgia Weekly Influenza Report

MMWR Week 45

Updated 11/15/2013

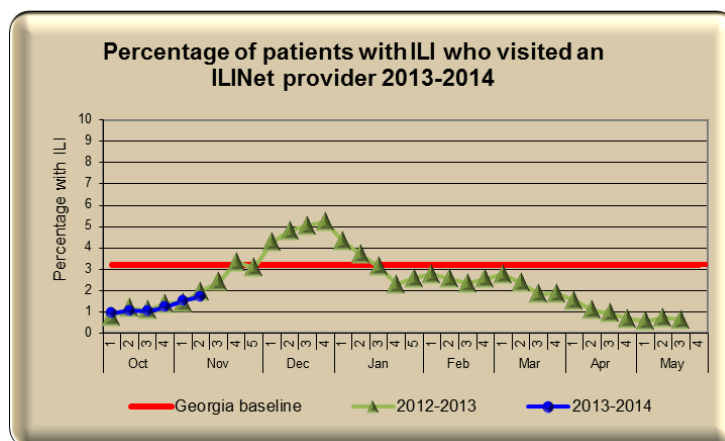
## Week 45 (Nov. 3, 2013—Nov. 9, 2013) Synopsis

During week 45 there was local influenza activity in Georgia with minimal occurrences of sustained flu transmission.

- **Outpatient Illness Surveillance (ILINet):** The proportion of outpatient visits for ILI was **1.72%**, which is below the Georgia baseline of 3.2%.
- **Geographic Spread of Influenza:** The geographic spread of influenza in Georgia was **MINIMAL** during week 45.
- **Metro Area Hospitalizations:** There were 3 hospitalizations due to influenza infection in week 45.
- **Influenza Related Deaths:** There were **0** confirmed deaths due to influenza during week 45.
- **Viral Surveillance:** Of the **836** Specimens tested and reported by the Georgia Public Health Laboratory (GPHL) and the National Respiratory and Enteric Virus Surveillance System (NREVSS) collaborating laboratories during week 45, **83 (9.9%)** were positive for influenza.
- **Reported Influenza Outbreaks:** There were **0** influenza-related outbreaks reported to public health during week 45.
- **RSV Viral Surveillance:** Of the 357 specimens tested and reported by the Georgia Public Health Laboratory (GPHL) and the National Respiratory and Enteric Virus Surveillance System (NREVSS) collaborating laboratories during week 45, 20.4% percent were positive for Respiratory syncytial virus, **above the season onset threshold of 10.0%**.

## ILINet Provider Network Data

**Percentage of patients with ILI reported by ILINet providers**  
(Volunteer providers who report percentage of patients with ILI seen by their practice or facility weekly. This week there are currently **36** ILINet providers reporting in Georgia.)



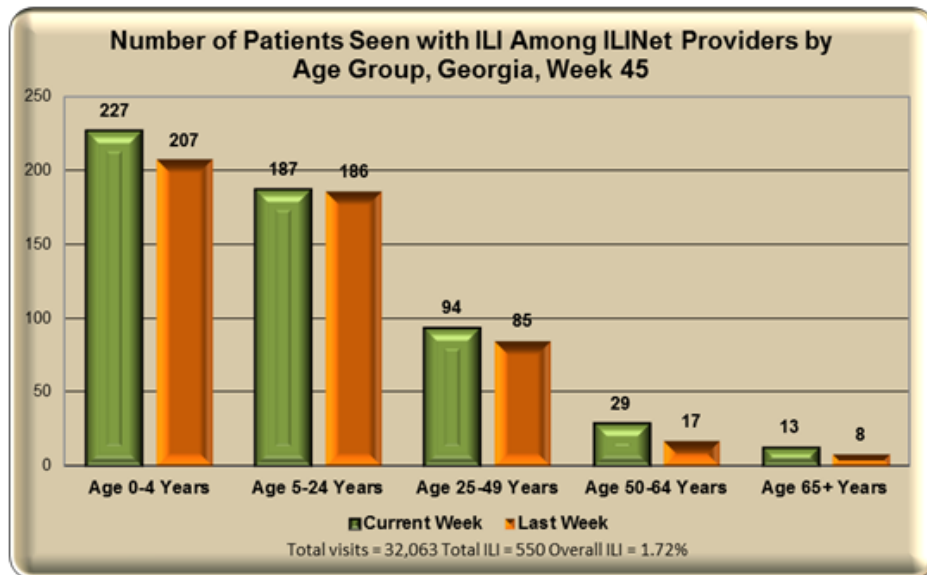
This Week: **1.72%** of patients seen in ILINet Provider offices were diagnosed with ILI.

Note: The Georgia baseline is formulated by averaging ILI percentage during weeks of endemic activity determined by laboratory results for influenza.

**GEORGIA  
DEPARTMENT OF  
PUBLIC HEALTH**

**ILINet patient visits by  
age group**

This graph displays the number of patients seen at sentinel provider offices and diagnosed with ILI in the past week. The data are stratified by age-group.



During **week 45** those in the age group 0-4 years were most often seen with ILI symptoms by ILINet providers.

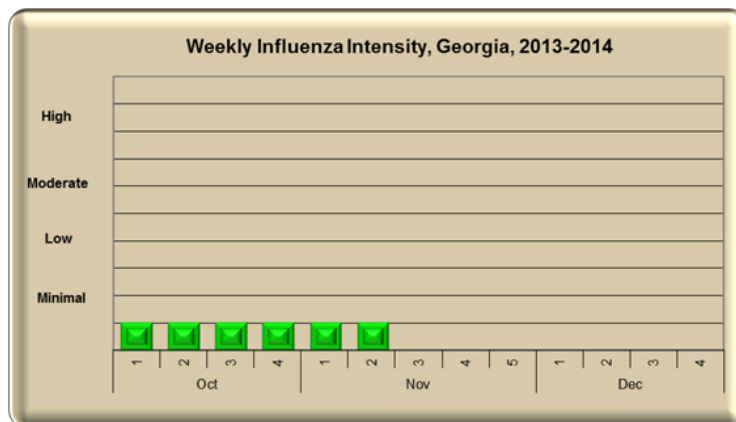
**ILI Activity Level Indicator - ILINet**

(This graph uses the proportion of outpatient visits for ILI to measure the ILI severity in Georgia.) For a national view, visit <http://cdc.gov/flu/weekly/>

**Georgia ILI Intensity Indicator**

ILI Activity Levels (1 - 10) correspond to the number of standard deviations away from the 3-year mean for the current week.

This week the intensity level is:  
**Minimal = 1**



**Georgia ILI Geographic Dispersion**

This Week's Flu Code is:

**LOCAL**

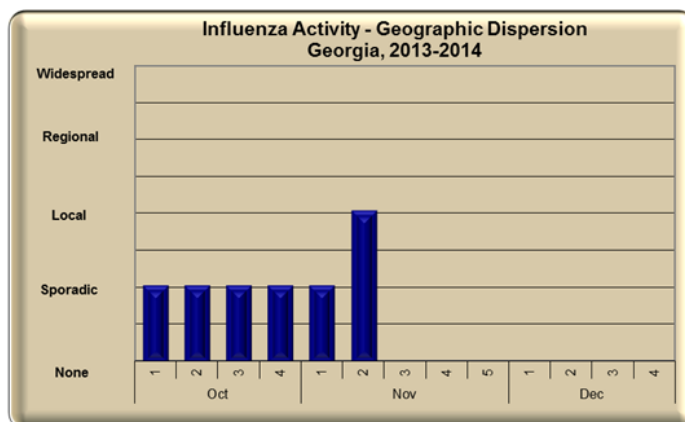
Local = Outbreaks of influenza

OR

Increases in ILI cases and recent laboratory-confirmed influenza cases in a single region of the state

**Council of State and Territorial Epidemiologists Report – Geographic Dispersion**

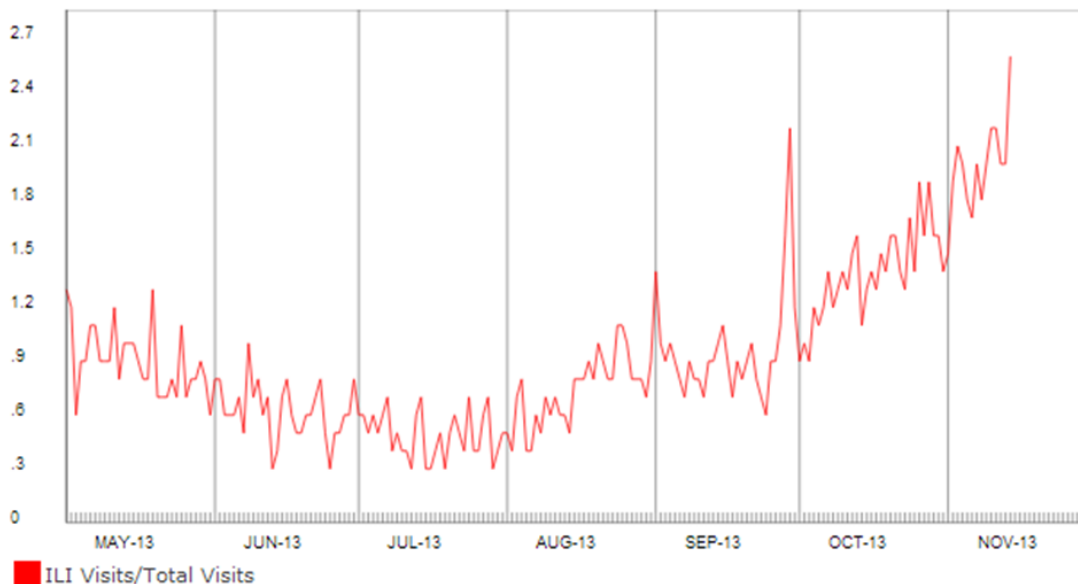
(This graph reflects geographic dispersion and is not an indicator of influenza severity)



GEORGIA  
DEPARTMENT OF  
PUBLIC HEALTH

Syndromic Surveillance  
Data Daily Influenza-like  
Illness Syndrome  
(percentage of ILI visits)

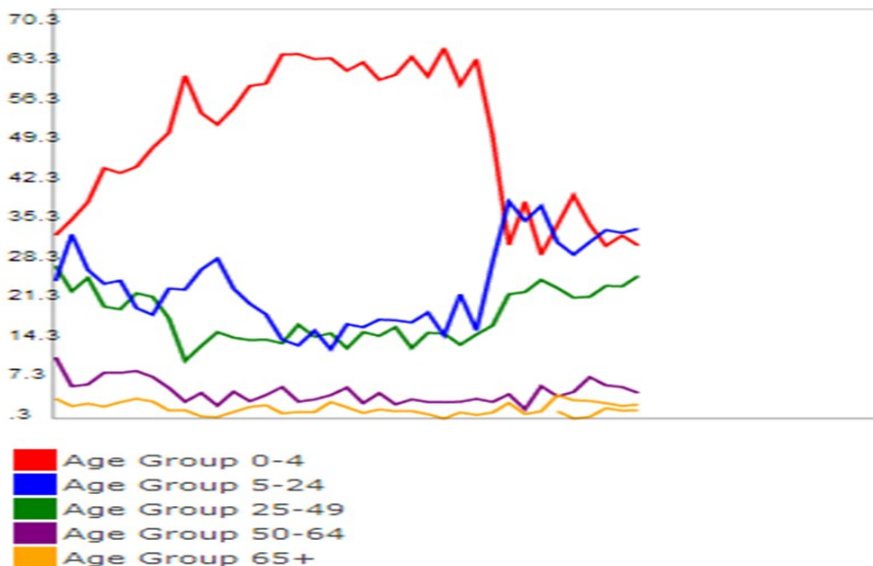
### Daily Percent of ILI Syndrome Visits to Georgia Emergency



During **week 45** the daily percentage of patients seen for ILI in Georgia Emergency Departments reporting to our syndromic surveillance system increased.

Syndromic Surveillance Data  
Weekly Influenza-like  
Illness Syndrome  
(percentage of ILI visits by Age  
Group)

### Weekly Percent of ILI Syndrome Visits by Age Group



**GEORGIA  
DEPARTMENT OF  
PUBLIC HEALTH**

**Influenza Hospitalizations in the eight county metro Atlanta area 2013-2014** (Emerging Infections Program data)

**Influenza-Associated Deaths 2013-2014 Statewide** (Influenza-associated deaths are a notifiable condition in Georgia)

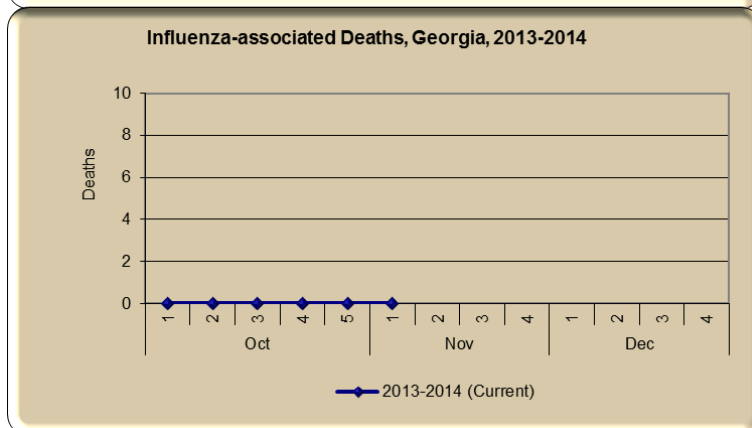
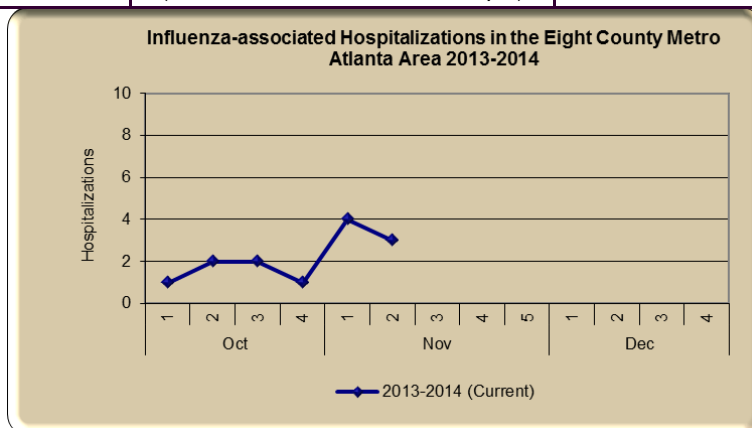
**Influenza-Associated hospitalizations in the eight-county metro Atlanta area** (Emerging Infections Program data)

**Influenza-Associated deaths reported to Public Health**

## Georgia Influenza-Associated Hospitalizations and Deaths

	<b>Number of Hospitalizations (8- County Metro-Area Only)</b>	<b>Hospitalization Rate (Cases/100,000 people)</b>
0 - 4	1 (7.7%)	0.37
5 -17	2 (15.4%)	0.29
18 - 49	5 (38.5%)	0.28
50 - 64	2 (115.4%)	0.30
65+	3 (23.1%)	0.92
Total	13 (For confirmation, these data are delayed)	0.35

<b>Age Group</b>	<b>Number of Deaths</b>	
0 - 4	0	
5 -17	0	
18 - 49	0	
50 - 64	0	
65+	0	
Total	0 (For confirmation, these data are delayed)	



**GEORGIA  
DEPARTMENT OF  
PUBLIC HEALTH**

2 Peachtree St. N.W.  
Atlanta, GA 30303

Phone: 404-663-4625  
Fax: 404-657-7517

E-mail: [aumartyn@dhr.state.ga.us](mailto:aumartyn@dhr.state.ga.us)

**GA DPH on the web!**  
<http://dph.georgia.gov/>

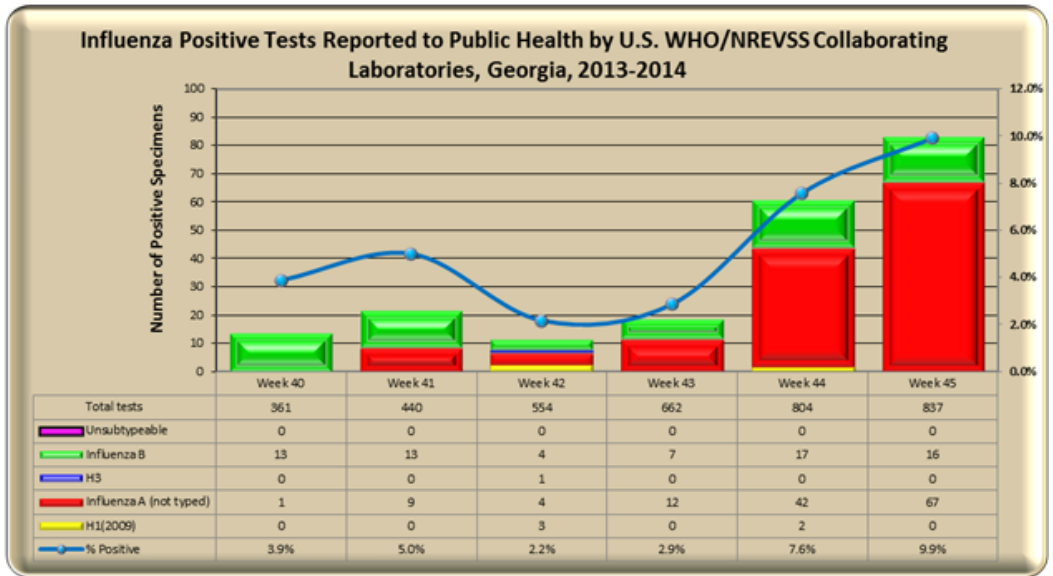
**Georgia threshold  
of RSV season  
onset and end**

RSV season onset is defined as the first week of two (2) consecutive weeks when the percent positive of **ALL** lab confirmed tests are greater than or equal to 10%. The end of RSV season is now defined as the first week of two consecutive weeks when the percent positive of **ALL** lab confirmed tests are less than 10%.

**RSV Season Status: ON**

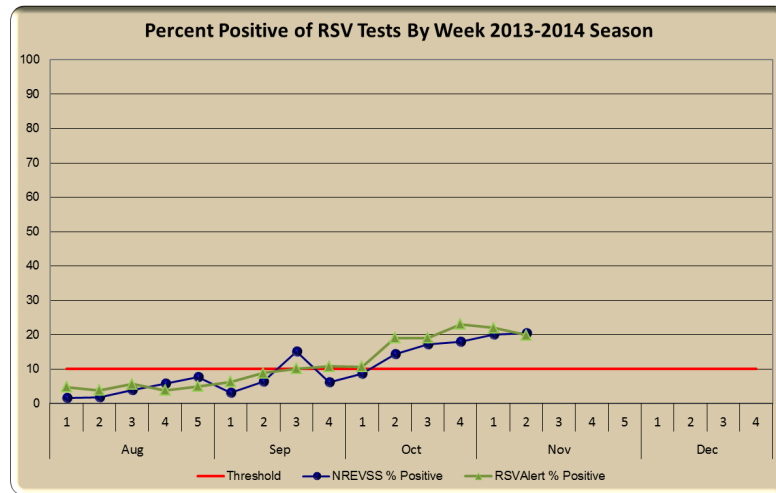


**Georgia Virologic Surveillance Data**



**Note:** Includes rapid tests reported from reference Laboratories and the Georgia Public Health Laboratory; not all positive laboratory results for influenza are reported to Public Health.  
**Data may vary week to week due to late provider reporting**

**Respiratory Syncytial Virus (RSV) Surveillance Data**



**Note:** Due to a decrease in the number of laboratories reporting to NREVSS, we have decided to look at the average RSV percent positives rather than the mean percent positives of all labs. We have also included data from the [RSVAlert program](#) to give a more robust view of RSV in Georgia.  
**Data may vary week to week due to late provider reporting**

**Flu News**

[Influenza Flu Scan: Low flu vaccine effectiveness; H5N1 cases in Cambodia; Human H6N1 case details; H7N9 vaccine trial; Cell-based flu vaccine](#)

[ECDC finds limited data on boosting flu vaccine coverage](#)

[Reports: MERS-CoV found in Saudi patient's camel](#)